

.74 Acre Lot | Huntsville, Texas
14th Street
Huntsville, TX 77340

\$95,000
0.74± Acres
Walker County



MORE INFO ONLINE:
www.homelandprop.com

.74 Acre Lot | Huntsville, Texas
Huntsville, TX / Walker County

SUMMARY

Address

14th Street

City, State Zip

Huntsville, TX 77340

County

Walker County

Type

Lot

Latitude / Longitude

30.7203313 / -95.5435235095

Taxes (Annually)

\$541

Acreage

0.74

Price

\$95,000

Property Website

<https://homelandprop.com/property/-74-acre-lot-huntsville-texas/walker/texas/74322/>



MORE INFO ONLINE:
www.homelandprop.com

.74 Acre Lot | Huntsville, Texas
Huntsville, TX / Walker County

PROPERTY DESCRIPTION

Investment Opportunity!!

This lightly wooded tract is a beautiful mix of hardwoods and pines. It boasts a location that is less than a half mile from SHSU campus and Elliot T. Bowers Stadium. It is walking distance from the town square and popular restaurants like Farmhouse Cafe and City Hall Cafe, making it a blank canvas for living, rental or business endeavors. The tract adjoins Sam Houston State University property.

Come claim this outstanding opportunity!

Utilities: Electric available, Water available

Utility Providers: City of Huntsville WSC, Entergy



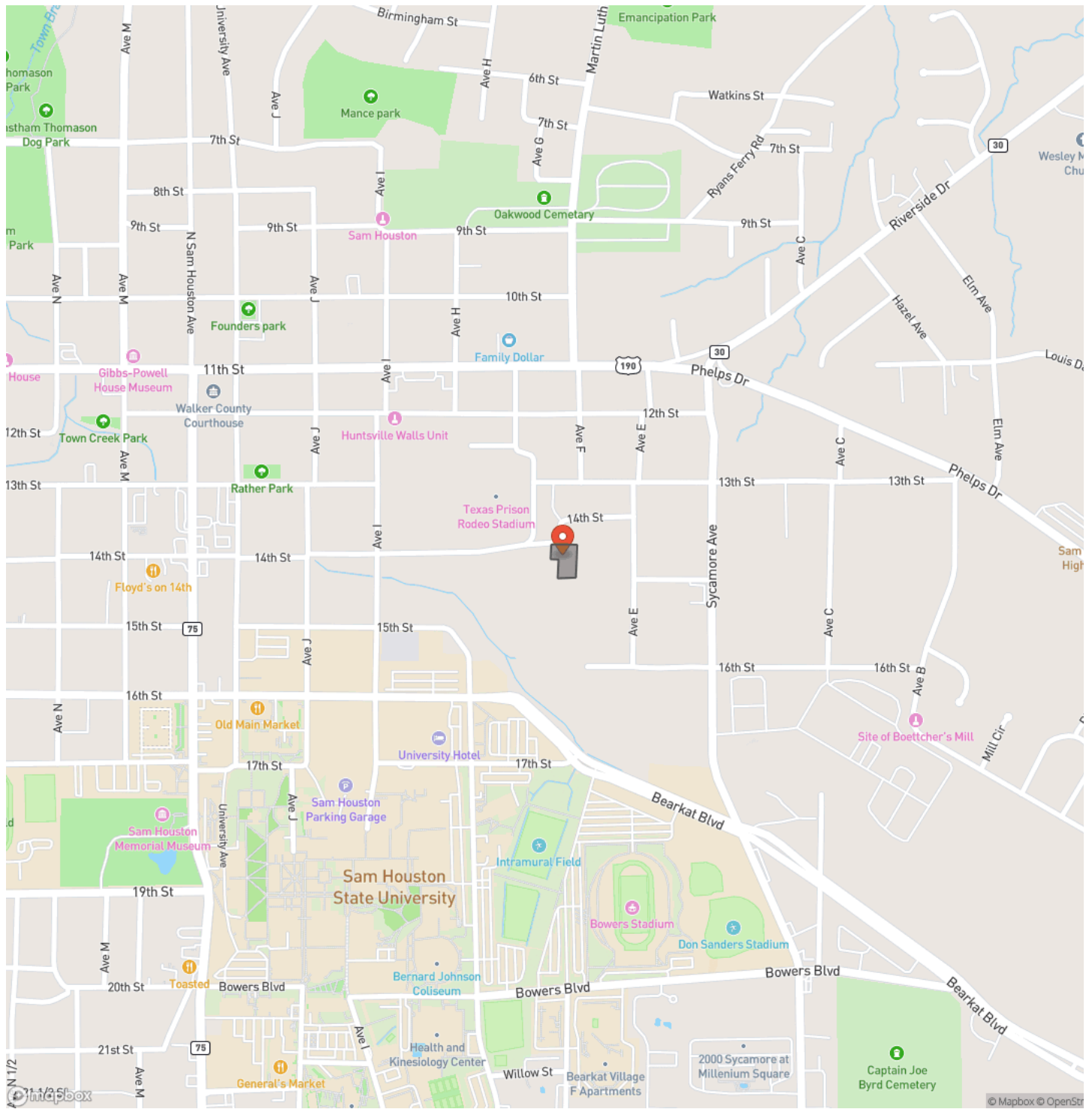
MORE INFO ONLINE:
www.homelandprop.com

.74 Acre Lot | Huntsville, Texas
Huntsville, TX / Walker County

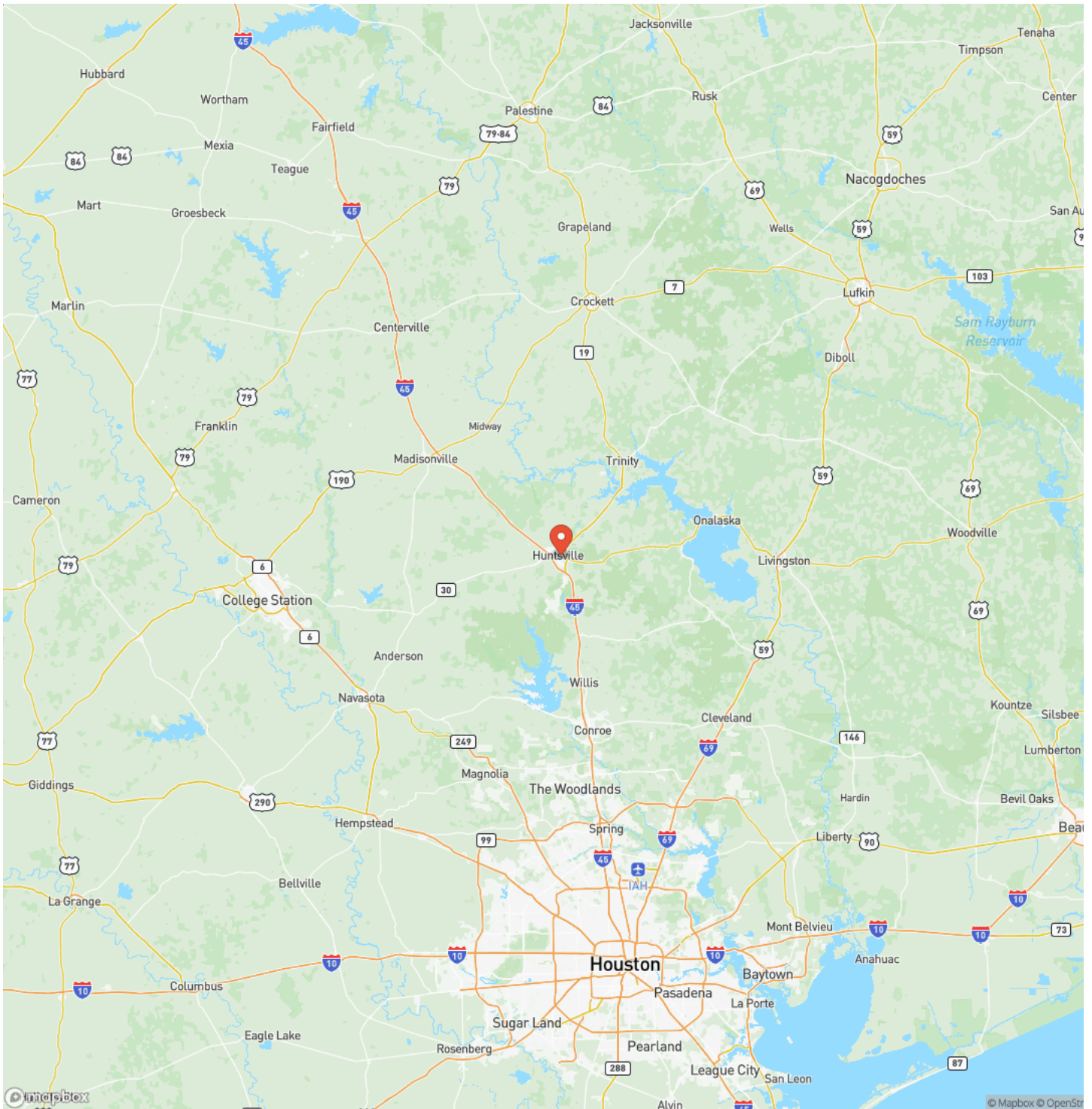


MORE INFO ONLINE:
www.homelandprop.com

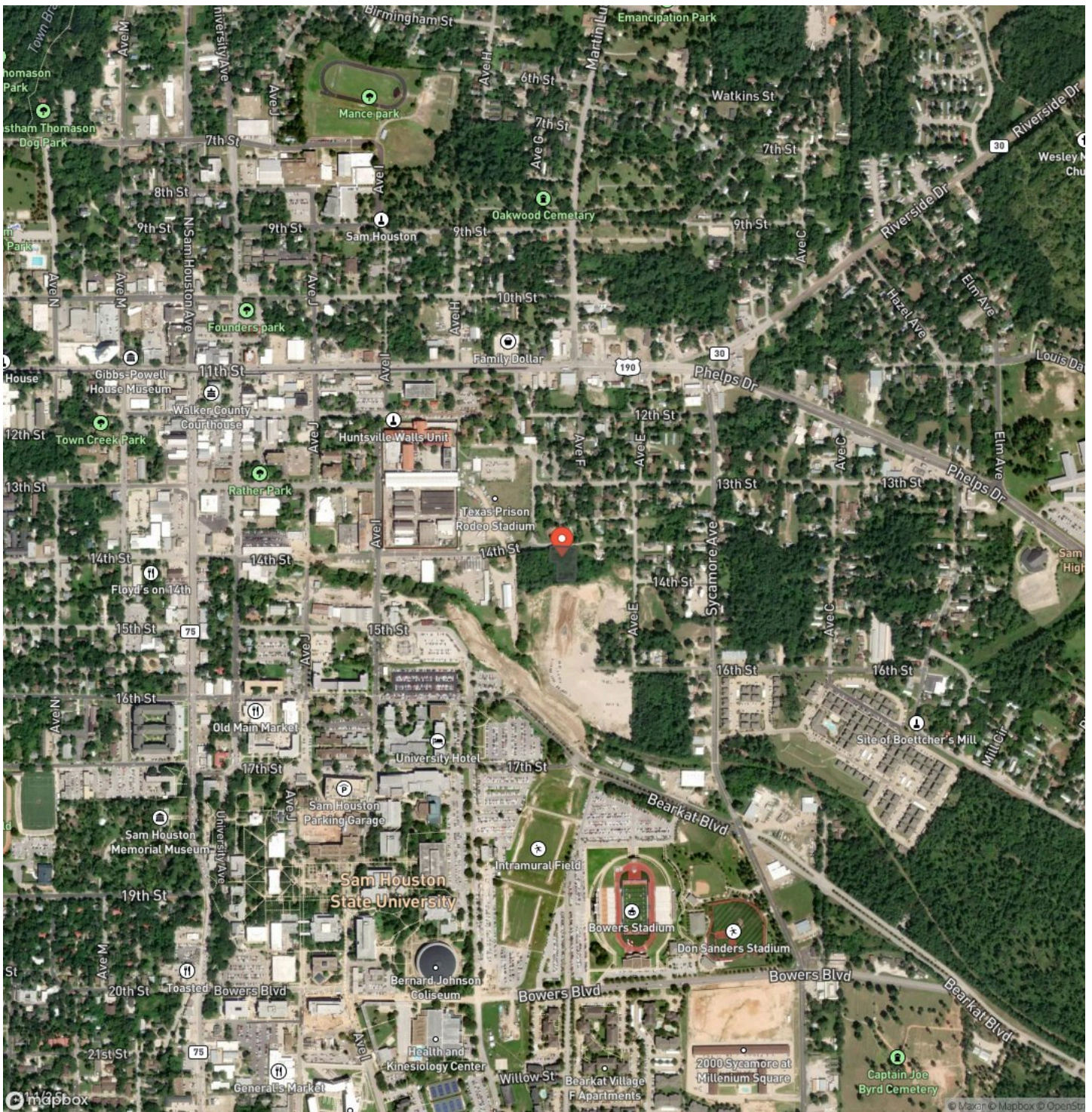
Locator Map



Locator Map



Satellite Map



DISCLAIMERS

Listing Disclaimer

The use and/or reproduction of any marketing materials generated by HomeLand Properties, Inc. and/or its associated clients, including, but not limited to, maps, videos, photos, spreadsheets, diagrams, contracts, documents, etc. is strictly prohibited without written consent. The information contained herein is from sources deemed reliable but is not guaranteed by HomeLand Properties, Inc. The offerings are subject to change in price, errors, omissions, prior sales or withdrawal without notice. This disclaimer supersedes any & all information published by other MLS sites whether by permission or not, including, but not limited to, co-broker fees, if any. Acreage size and dimensions are approximate. County Appraisal District (CAD) market and tax values, as well as acreage size and/or shape, are not applicable to real estate market conditions and/or this solicitation, other than for ag value (1D1) purposes.

Title and Survey Disclaimer

Expense subject to negotiation. Seller requires use of seller's preferred surveyor/title company.

Mineral Disclaimer

Oil and gas minerals have been reserved by prior owners. Other reservations subject to title and/or sellers contract when applicable.

Easement Disclaimer

Visible and apparent and/or marked in field.



MORE INFO ONLINE:
www.homelandprop.com

HomeLand Properties, Inc.
1600 Normal Park Dr.
Huntsville, TX 77340
(936) 295-2500
www.homelandprop.com



MORE INFO ONLINE:
www.homelandprop.com