

Santa Fe Style Home on 11.4 Acres in Alto NM
104 Country Lane
Alto, NM 88312

\$2,100,000
11.43± Acres
Lincoln County



Santa Fe Style Home on 11.4 Acres in Alto NM
Alto, NM / Lincoln County

SUMMARY

Address

104 Country Lane

City, State Zip

Alto, NM 88312

County

Lincoln County

Type

Residential Property

Latitude / Longitude

33.42586 / -105.633897

Taxes (Annually)

\$7,941

Dwelling Square Feet

4,597

Bedrooms / Bathrooms

4 / 4

Acreage

11.43

Price

\$2,100,000



Santa Fe Style Home on 11.4 Acres in Alto NM

Alto, NM / Lincoln County

PROPERTY DESCRIPTION

Discover this stunning Santa Fe style home, perfectly situated on 11.43 acres with breathtaking views of Sierra Blanca. This property boasts custom designer touches throughout, making it a true standout and creating a warm and inviting atmosphere. It has 4 bedrooms and 4 ½ baths.

Exterior amenities include a double garage and carport for ample parking. Beautifully landscaped entry featuring a large, Old World style wooden door giving a touch of craftsmanship and traditional style. An inviting courtyard and a delightful putting green along with the expansive outdoor covered patio that is ideal for entertaining, with stunning Sierra Blanca views. This home has a stucco exterior that is completed by the stately bell tower and canales.

Interior features include a gourmet kitchen equipped with an island, kiva fireplace, and a spacious walk-in pantry. Cozy living room with a large fireplace and double doors that open to the covered patio. There is an office and another additional space. Separate guest wing with kitchenette. Decorative niches for the display of art collections are strategically placed. Brightly colored hand-crafted tiles create accents of vibrant color and texture characteristic of Santa Fe style architecture along with vigas and latillas.

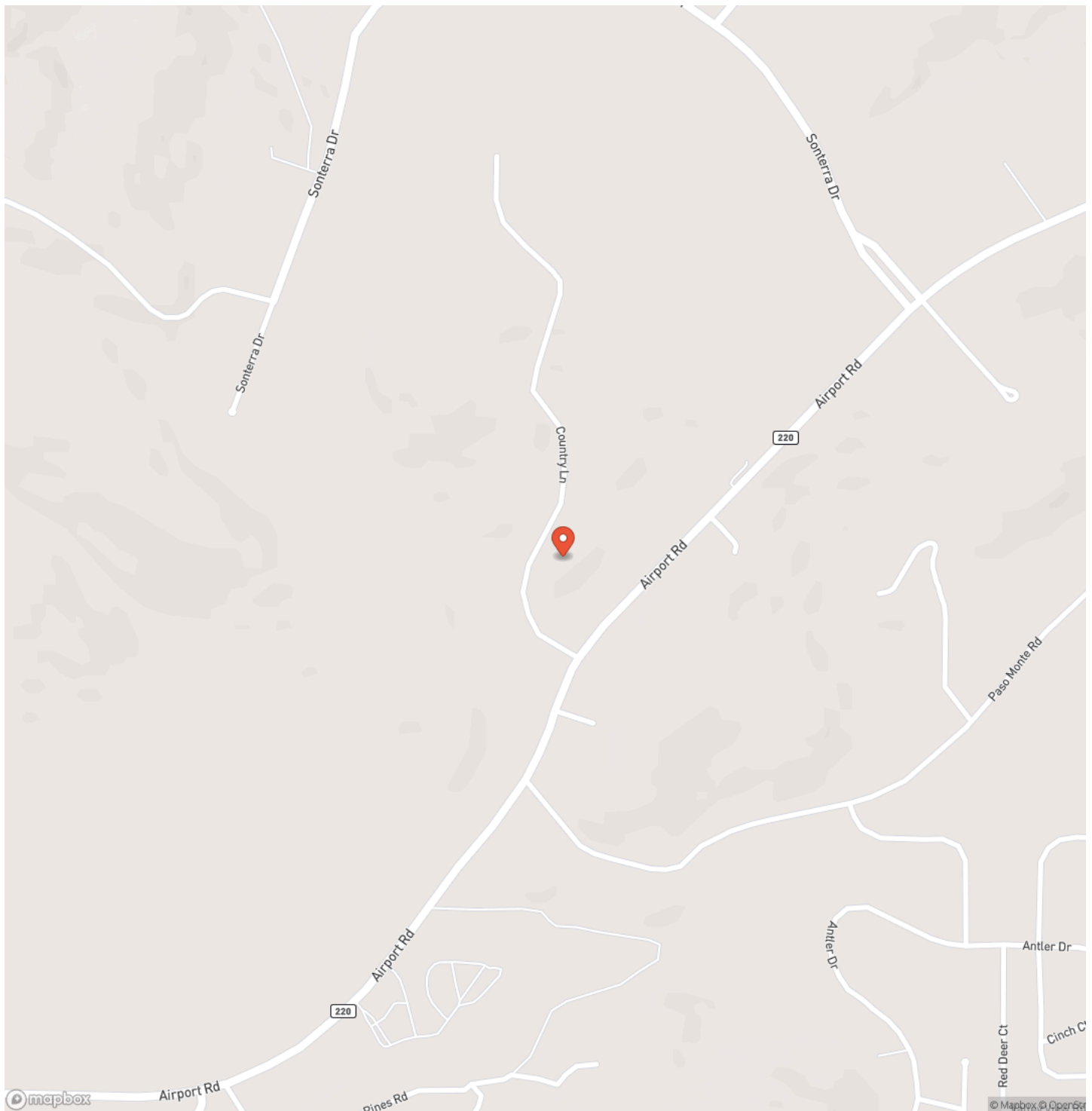
Refrigerated air conditioning throughout, complemented by radiant floor heating in the main areas and forced air heating in other areas. Separate guest wing is complete with its own kitchen and bath for added privacy. Conveniently located on the main level, the master suite features a luxurious bathroom with a separate tub and shower along with a separate courtyard. This home offers a perfect blend of luxury and comfort in a picturesque setting that is convenient to dining, golf, and shopping.



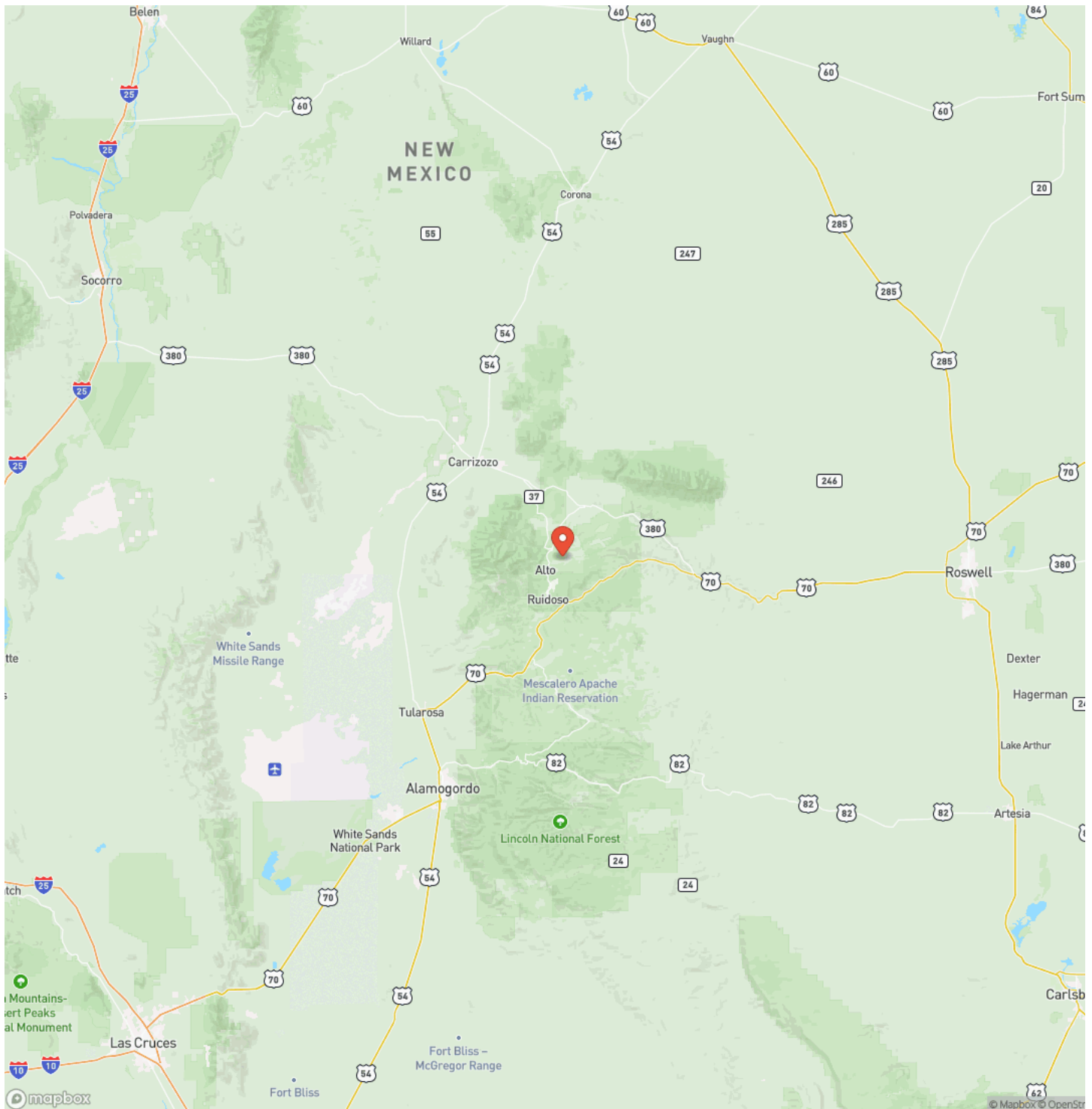
Santa Fe Style Home on 11.4 Acres in Alto NM
Alto, NM / Lincoln County



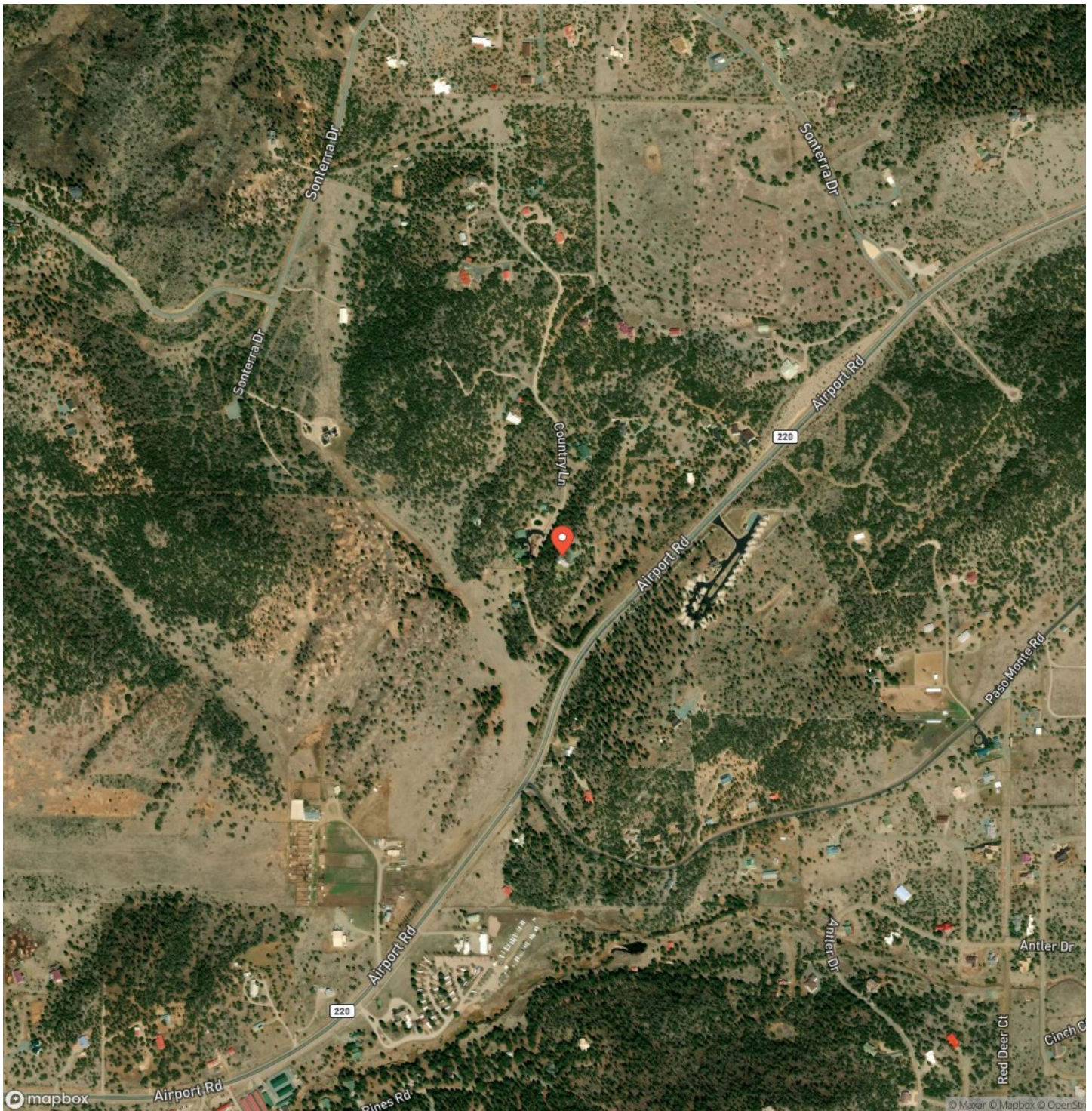
Locator Map



Locator Map



Satellite Map



Santa Fe Style Home on 11.4 Acres in Alto NM
Alto, NM / Lincoln County

LISTING REPRESENTATIVE
For more information contact:



Representative
Chad Casson

Mobile
(575) 937-0323

Email
chad@nmranchandluxury.com

Address
500 Mechem Drive

City / State / Zip
Ruidoso, NM 88345

NOTES

Notes section with 12 horizontal lines for text entry.

This image shows a blank sheet of white paper with horizontal ruling lines. The lines are evenly spaced and run across the width of the page. There are no margins, text, or other markings on the paper.



MORE INFO ONLINE:
www.NMRanchandLuxury.com

DISCLAIMERS

Information in this brochure is provided solely for information purposes and does not constitute an offer to sell or advertise real estate outside the states in which broker or agent licensed. The information presented has been obtained from sources deemed to be reliable, but is not guaranteed or warranted by the agent, broker, or the sellers of these properties. This offering is subject to errors, omissions, prior sale, price change, correction or withdrawal from the market without notice. All references to age, square footage, income, expenses, acreage, carrying capacity, and land classification, etc. are approximate. Prospective buyers are chargeable with and expected to conduct their own independent investigation of the information and the property and to rely only on those results. Sellers reserve the right to accept or reject any and all offers without liability to any buyer or cooperating broker.

Maps are provided for illustration purposes only, the accuracy is not warranted. Parcels on interactive maps are not adjusted to match aerial backgrounds. This information is for reference purposes only and is not a legal document. Data maps contain errors. The seller and seller's agent are making known to all potential buyers that there may be variations between the location of the existing fence lines and the legal description of the deeded property. Seller and seller's agent make no warranties with regard to the location of the fence lines in relationship to the deeded property lines, nor does the Seller make any warranties or representations with regard to the specific acreage contained within the fenced property lines. Seller is selling the property in an "as is" condition, which includes the location of the fences as they exist. Boundaries shown on the accompanying maps are approximate, based on county parcel data. The maps are not to scale. The accuracy of the maps is not guaranteed. Prospective buyers are encouraged to verify fence lines, deeded property lines and acreages using a licensed surveyor at their own expense.



NM Ranch & Luxury, LLC
500 Mechem Drive, Suite C
Ruidoso, NM 88345
(575) 808-0144
www.NMRanchandLuxury.com

