

40+/- Acres Ulysses, Potter PA
101 Cowburn
Ulysses, PA 16948

\$409,900
40.74± Acres
Potter County



40+/- Acres Ulysses, Potter PA
Ulysses, PA / Potter County

SUMMARY

Address

101 Cowburn

City, State Zip

Ulysses, PA 16948

County

Potter County

Type

Farms, Horse Property, Hunting Land

Latitude / Longitude

41.884314 / -77.796437

Dwelling Square Feet

900

Bedrooms / Bathrooms

3 / 1

Acreage

40.74

Price

\$409,900

Property Website

<https://www.mossyoakproperties.com/property/40-acres-ulysses-potter-pa/potter/pennsylvania/87234/>



40+/- Acres Ulysses, Potter PA Ulysses, PA / Potter County

PROPERTY DESCRIPTION

Secluded 40± Acre Retreat in Ulysses, Potter County, PA – Home • Shop • Horse Barn • Pond • Timber • OGM Rights

Tucked away on a quiet country road, this 40± acre property offers the perfect blend of privacy, recreation, and functionality. The cozy 900-square-foot home is move-in ready and well-maintained, surrounded by mature trees, open yard space, and serene views.

Property Features:

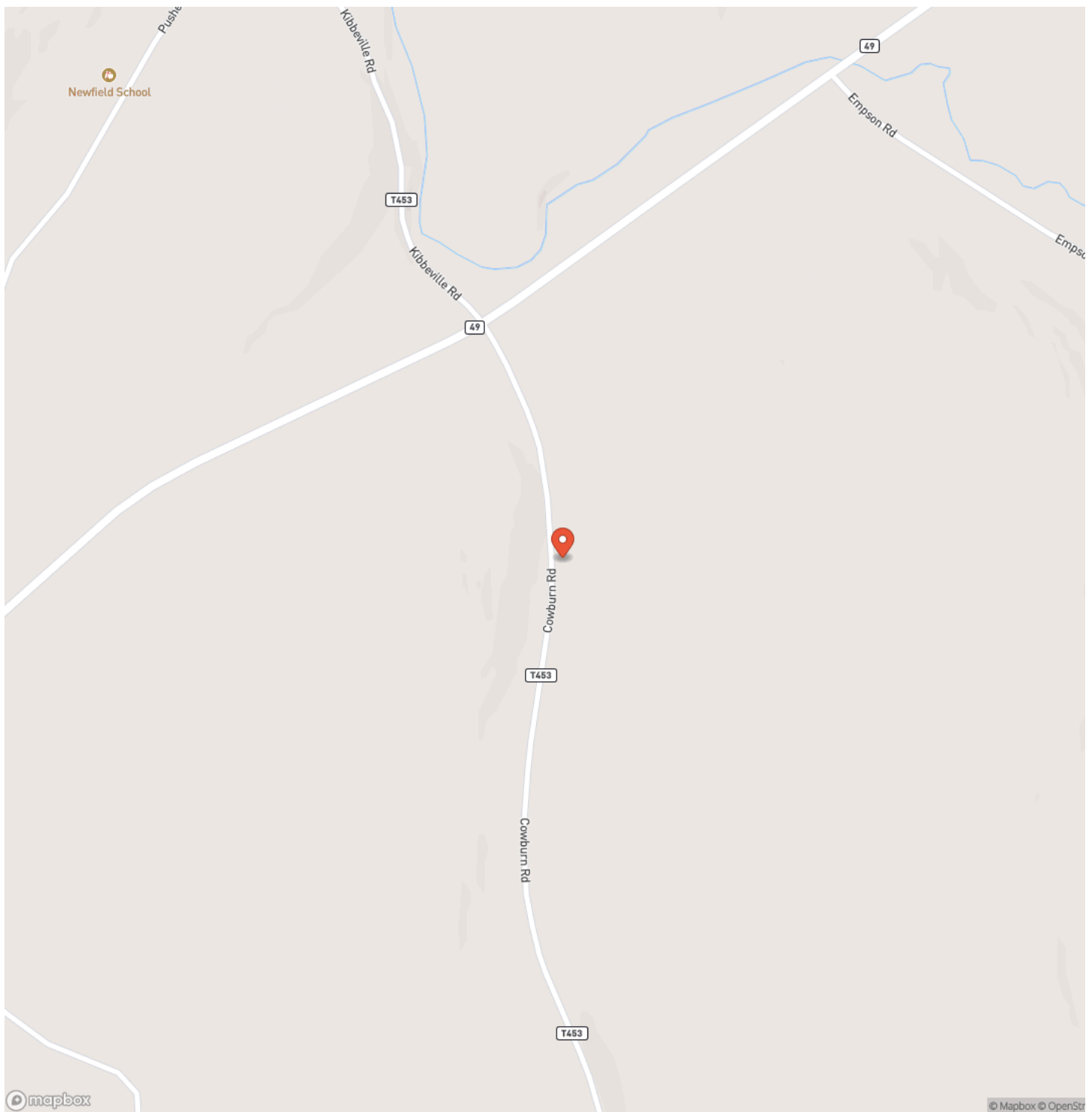
- 40± mostly wooded acres with decent timber value
- 900-square-foot home with attractive updates and efficient layout
- Newer 3-bay shop with concrete floor – ideal for equipment, toys, or a small business
- Horse barn with pasture space – ready for livestock or hobby animals
- Beautiful spring-fed pond – great for fishing, relaxing, or wildlife watching
- Excellent hunting with established trails and habitat
- Oil, gas, and mineral rights convey

Whether you're looking for a year-round residence, weekend getaway, or income-producing rural investment, this property checks all the boxes. Enjoy peaceful living with abundant wildlife, recreational opportunity, and valuable land assets – all in one incredible package.

40+/- Acres Ulysses, Potter PA
Ulysses, PA / Potter County

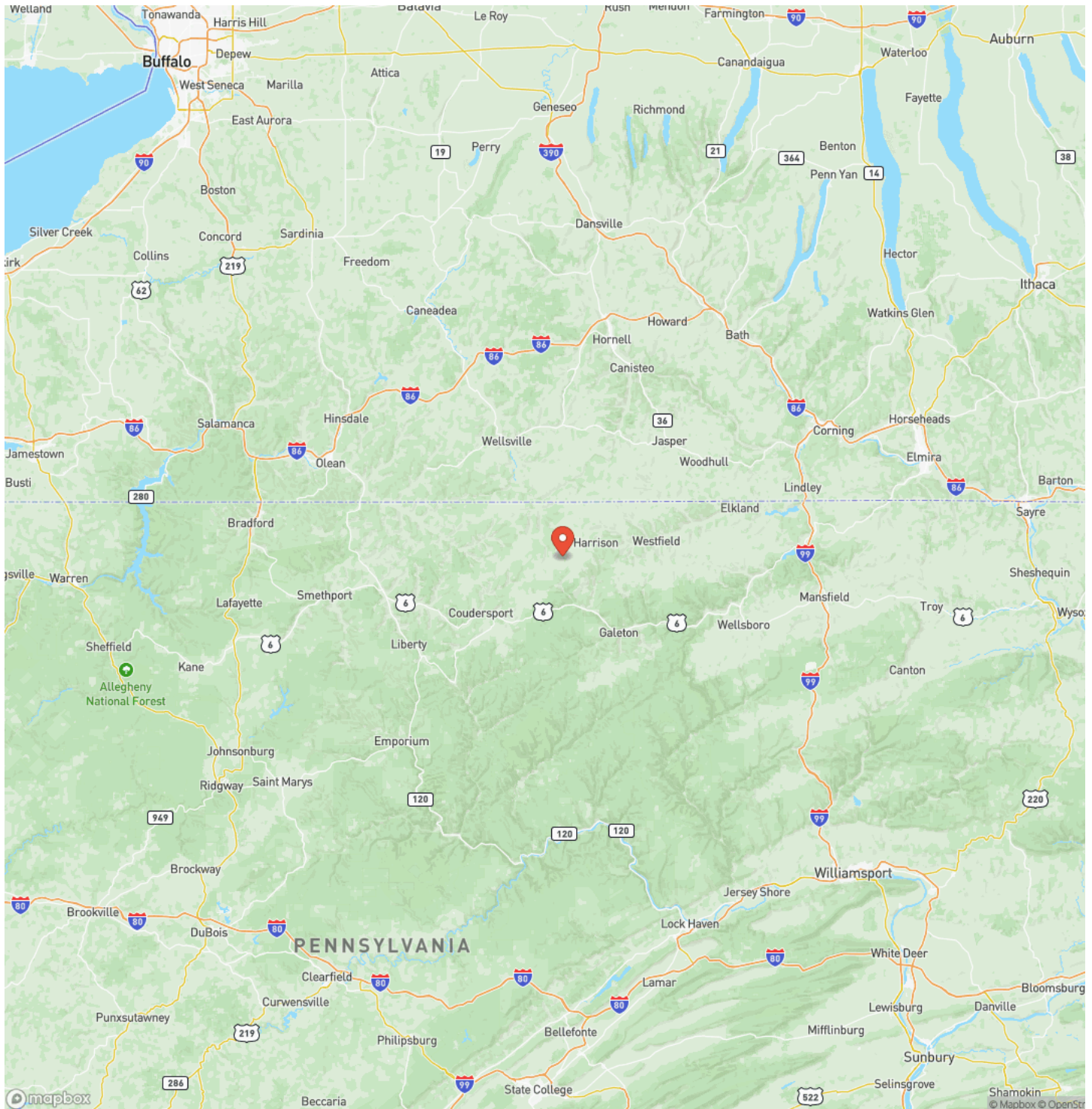


Locator Map

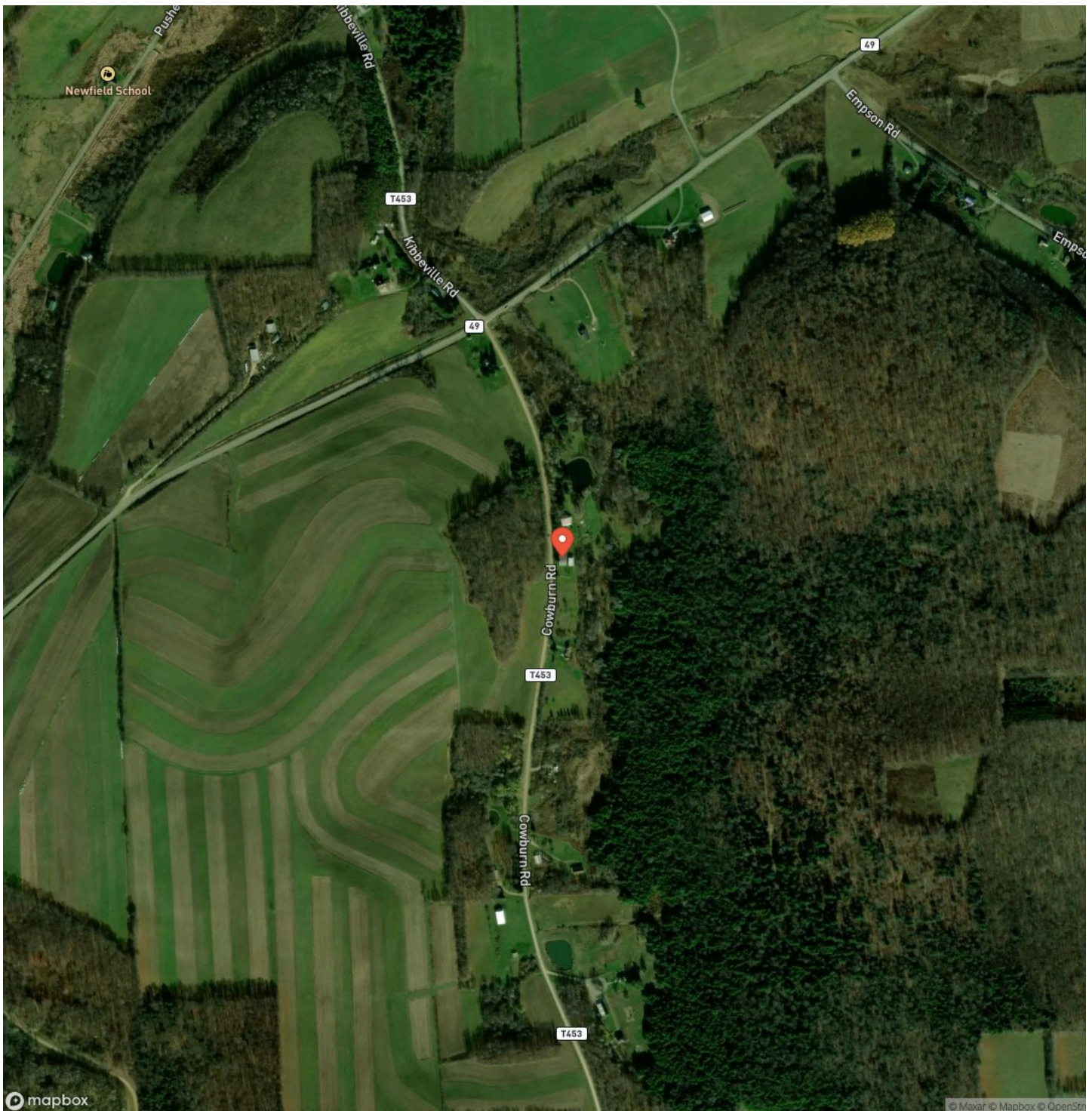


Ulysses, PA / Potter County

Locator Map



Satellite Map



40+/- Acres Ulysses, Potter PA
Ulysses, PA / Potter County

LISTING REPRESENTATIVE

For more information contact:



Representative

Chuck Hershner

Mobile

(717) 891-0933

Office

(717) 870-0180

Email

chershner@mossyoakproperties.com

Address

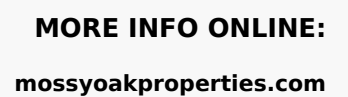
511 Skyline Drive

City / State / Zip

Belle Vernon, PA 15012

NOTES



[illegible]

DISCLAIMERS

Information in this brochure is provided solely for information purposes and does not constitute an offer to sell or advertise real estate outside the states in which broker or agent licensed. The information presented has been obtained from sources deemed to be reliable, but is not guaranteed or warranted by the agent, broker, or the sellers of these properties. This offering is subject to errors, omissions, prior sale, price change, correction or withdrawal from the market without notice. All references to age, square footage, income, expenses, acreage, carrying capacity, and land classification, etc. are approximate. Prospective buyers are chargeable with and expected to conduct their own independent investigation of the information and the property and to rely only on those results. Sellers reserve the right to accept or reject any and all offers without liability to any buyer or cooperating broker.

Maps are provided for illustration purposes only, the accuracy is not warranted. Parcels on interactive maps are not adjusted to match aerial backgrounds. This information is for reference purposes only and is not a legal document. Data maps contain errors. The seller and seller's agent are making known to all potential buyers that there may be variations between the location of the existing fence lines and the legal description of the deeded property. Seller and seller's agent make no warranties with regard to the location of the fence lines in relationship to the deeded property lines, nor does the Seller make any warranties or representations with regard to the specific acreage contained within the fenced property lines. Seller is selling the property in an "as is" condition, which includes the location of the fences as they exist. Boundaries shown on the accompanying maps are approximate, based on county parcel data. The maps are not to scale. The accuracy of the maps is not guaranteed. Prospective buyers are encouraged to verify fence lines, deeded property lines and acreages using a licensed surveyor at their own expense.

Mossy Oak Properties Pennsylvania Land Professionals

511 Skyline Dr.
Belle Vernon, PA 15012
(724) 678-1232
mossyOakproperties.com

