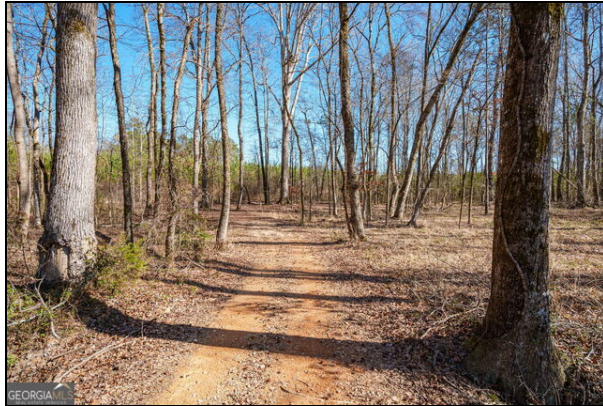


## 0 Crawfordville Road

White Plains  
Offered at \$620,500

- 73 Acres
- 2+/- acre pond
- 2 Creeks
- 2+/- acres Fenced around Barn



**73 Acres | Greene County - White Plains** This 73-acre tract in Greene County is a versatile property with excellent road frontage and water features. The land offers approximately 1,600 feet of paved frontage along Warren Road and includes a 2-acre pond, along with an additional stream forming the northern boundary. Improvements include a 24x40 two-story barn featuring two horse stalls on the ground level, with room for additional stalls (currently set up for goats). The upper level has partial framing and could be converted into living quarters, a guest space, or storage. Approximately 2 acres surrounding the barn are fenced, making it ideal for livestock or hobby farming. The property is planted in 6-year-old pine (2020-2021) and features a beautiful hardwood bottom around the pond, along with a good interior road system for easy access. An adjoining 90-acre tract with double paved road frontage and a stream is also available, providing an excellent opportunity to expand.



Mark Costello  
Broker  
Timberline Land & Farm  
180 Green Hills Road  
Athens, GA 30605  
Office: (706) 207-5850  
[mark@timberlinelandandfarm.com](mailto:mark@timberlinelandandfarm.com)  
<http://www.timberlinelandandfarm.com>  
DRE #: 317861



Timberline Land & Farm

List office: Timberline Land & Farm (706) 207-5850

All measurements and figures are approximate. Source of information is deemed reliable, but not verified.

