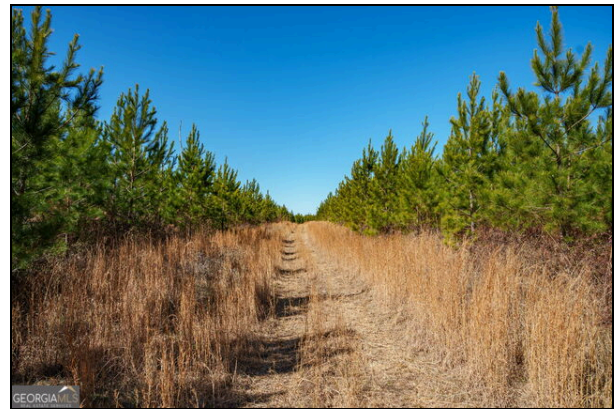


0 Crawfordville Road

White Plains
Offered at \$585,000

- 90 Acres
- Double Paved road frontage
- 6+/- year old planted pines
- Stream
- Interior road system



90 Acres | Greene County - White Plains This beautiful 90-acre tract in Greene County offers an outstanding blend of timber, water, and homesite potential. Featuring approximately 1,700 feet of paved road frontage along Crawfordville Road and an additional 400 feet on Warren Road, the property provides excellent access and multiple entry points. The land is planted in 6-year-old pine (2020-2021), complemented by a scenic hardwood draw with a flowing stream. A hilltop homesite offers an ideal location for a future residence or weekend retreat, while a well-established interior road system allows easy access throughout the property. With two gated entrances, this tract is well-suited for a hunting property, mini-farm, or private estate. An adjoining 73-acre tract with a barn and 2-acre pond is also available for purchase, offering the opportunity to assemble a larger contiguous holding.



Mark Costello
Broker
Timberline Land & Farm
180 Green Hills Road
Athens, GA 30605
Office: (706) 207-5850
mark@timberlinelandandfarm.com
<http://www.timberlinelandandfarm.com>
DRE #: 317861



Timberline Land & Farm

List office: Timberline Land & Farm (706) 207-5850

All measurements and figures are approximate. Source of information is deemed reliable, but not verified.

