

48.4 Tillable Acres Peoria County, IL  
Coordinates: 40°34'51"N, 89°43'11"W

81.6 total acres

AVERAGE ANNUAL CASHRENT

**\$15,149**

=

**\$313**  
Per acre

×


**48.4**  
Tillable acres

Low Estimate  
**\$298/acre**

High Estimate  
**\$328/acre**

CashRental Value Factors


Variables that help determine your estimate

 Average Temperature

**51.9° F** (32th percentile)

51.9° F


Other Counties

 Annual Precipitation

**52.1 in** (34th percentile)

52.1 in


Other Counties

 Corn

**215.9 BU/acre** (91th percentile)

215.9 BU/acre

Other Counties

 Soy

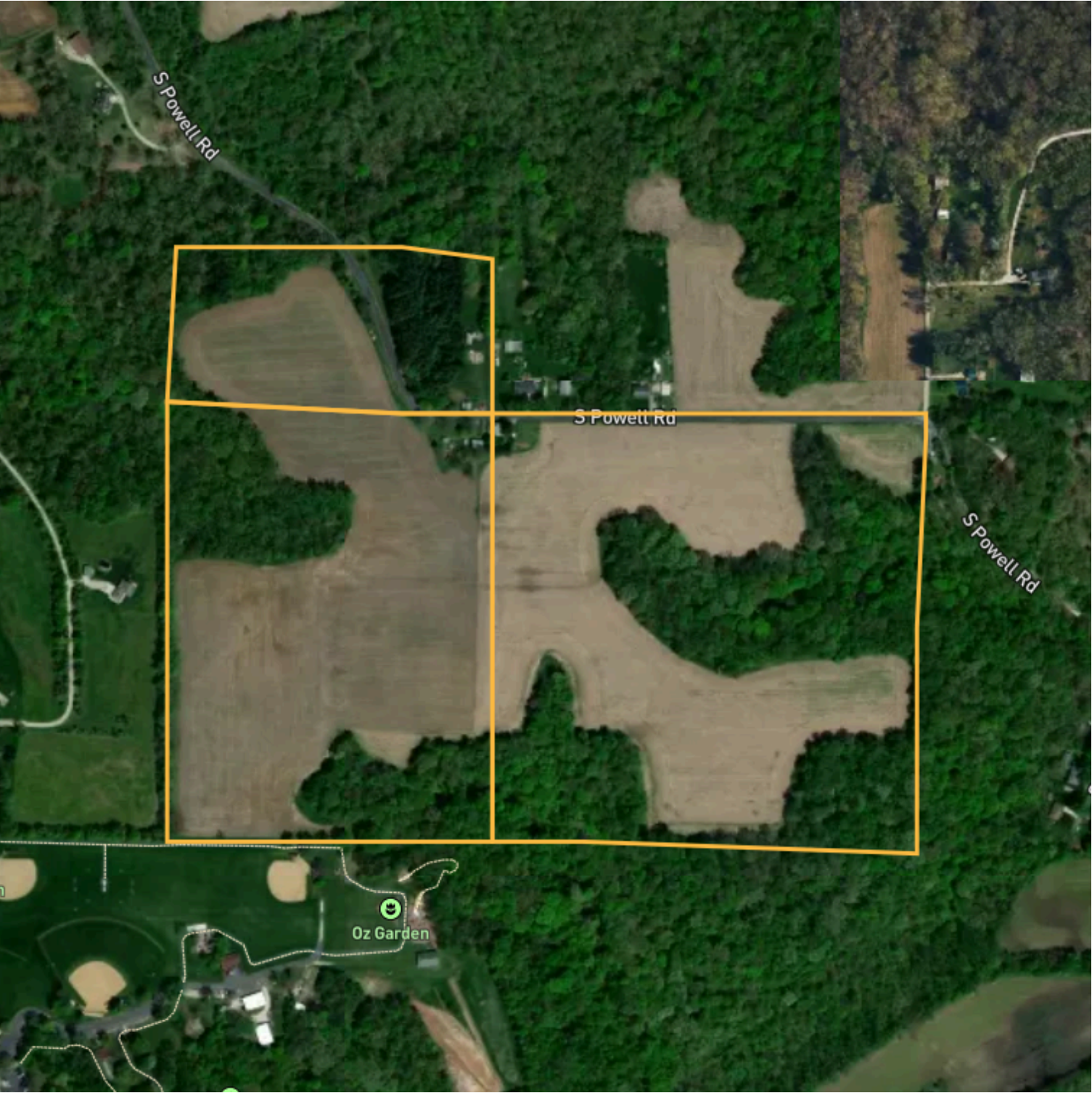
**62 BU/acre** (72th percentile)

62 BU/acre

Other Counties

48.4 Tillable Acres Peoria County, IL  
Coordinates: 40°34'51"N, 89°43'11"W

81.6 total acres, 3 parcels



48.4 Tillable Acres Peoria County, IL

Coordinates: 40°34'51"N, 89°43'11"W

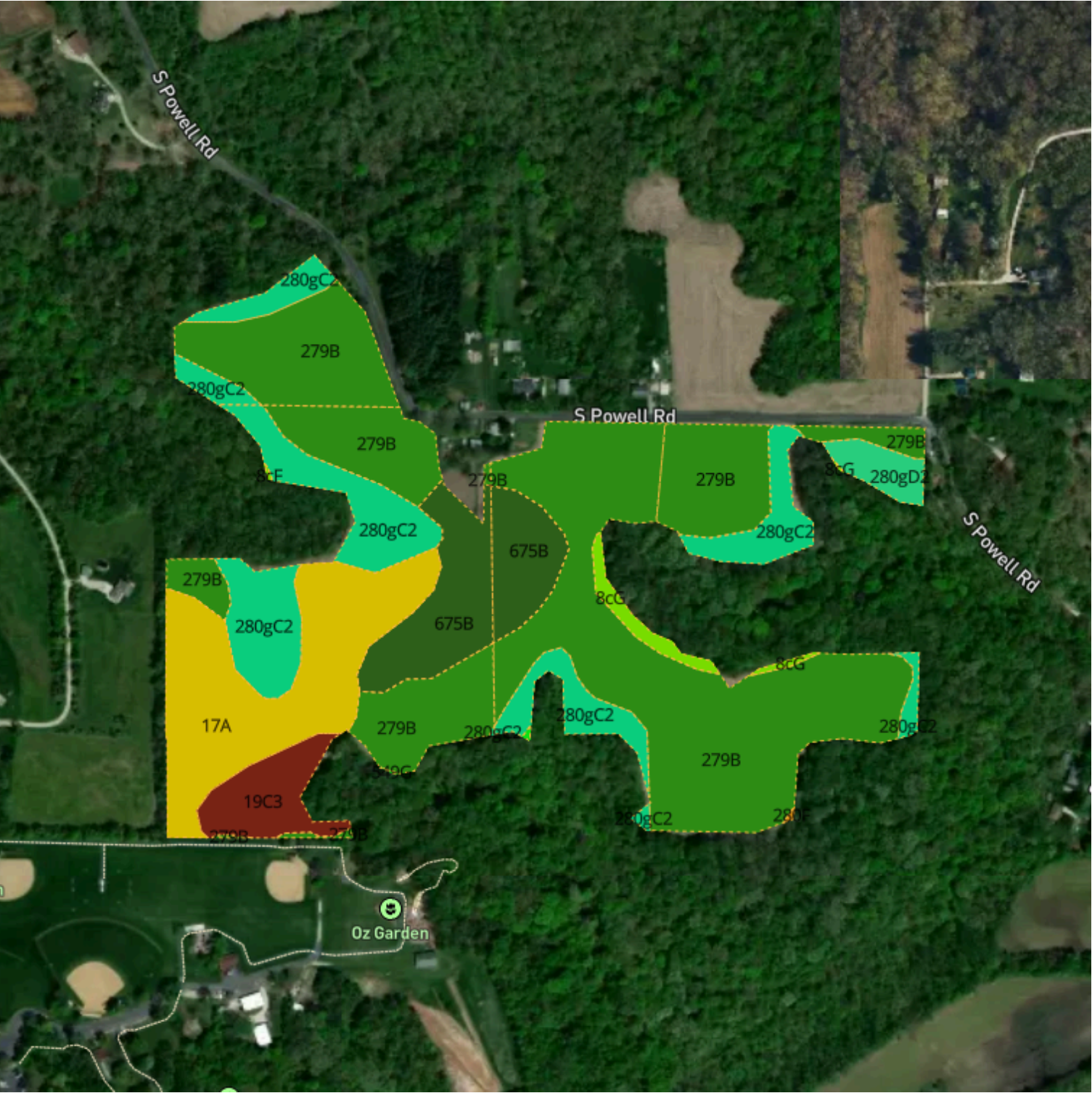
81.6 total acres, 3 parcels

Selection	Acres	Parcel ID Number	Owner
1	40.07	2021101001	-
2	30.62	2020227001	-
3	10.87	2017400004	-



48.4 Tillable Acres Peoria County, IL  
Coordinates: 40°34'51"N, 89°43'11"W











48.4 tillable acres, 4 selections



48.4 Tillable Acres Peoria County, IL

Coordinates: 40°34'51"N, 89°43'11"W

48.4 tillable acres, 4 selections

Soil Code	Soil Name	Acres	% of Field	PI
 279B	Rozetta silt loam, 2 to 5 percent slopes	25.1	51.9%	119
 280gC2	Fayette silt loam, glaciated, 5 to 10 percent slopes, eroded	8	16.6%	113
 17A	Keomah silt loam, 0 to 2 percent slopes	7.2	14.8%	119
 675B	Greenbush silt loam, 2 to 5 percent slopes	4.8	9.9%	133
 19C3	Sylvan silty clay loam, 5 to 10 percent slopes, severely eroded	1.9	3.9%	95
 280gD2	Fayette silt loam, glaciated, 10 to 18 percent slopes, eroded	0.8	1.7%	109
 8cG	Hickory silt loam, cool mesic, 35 to 60 percent slopes	0.6	1.2%	48
 549G	Marseilles silt loam, 35 to 60 percent slopes	<0.1	<0.01%	52
 8cF	Hickory silt loam, cool mesic, 18 to 35 percent slopes	<0.1	<0.01%	65
 280F	Fayette silt loam, glaciated, 18 to 35 percent slopes	<0.1	<0.01%	87
Total		48.4		117.4 avg