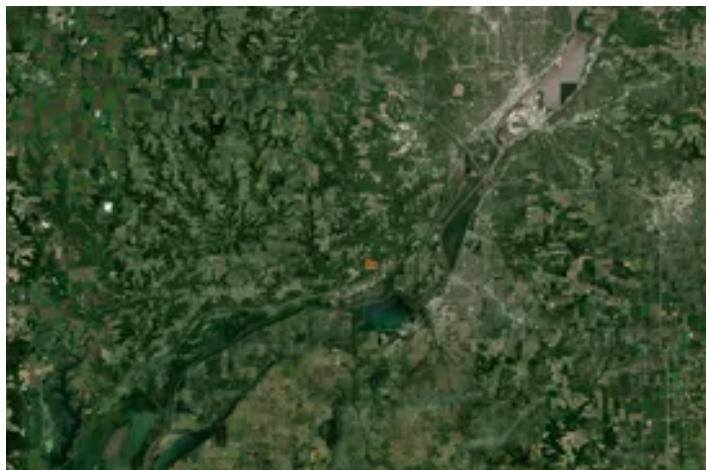


Peoria County, Illinois 81.5 Acres of Land for Sale
9011 S Powell Rd
Peoria, IL 61607

\$770,000
81.5± Acres
Peoria County



Peoria County, Illinois 81.5 Acres of Land for Sale
Peoria, IL / Peoria County

SUMMARY

Address

9011 S Powell Rd

City, State Zip

Peoria, IL 61607

County

Peoria County

Type

Farms, Hunting Land, Recreational Land, Business Opportunity

Latitude / Longitude

40.580158 / -89.718186

Acreage

81.5

Price

\$770,000

Property Website

<https://landguys.com/property/peoria-county-illinois-81-5-acres-of-land-for-sale/peoria/illinois/98402/>



Peoria County, Illinois 81.5 Acres of Land for Sale

Peoria, IL / Peoria County

PROPERTY DESCRIPTION

Income, Hunting & Homesite

LandGuys is excited to offer this gorgeous 81.5± acre Peoria County, Illinois farm. Tracts this close to Peoria with the diversity this property offers simply don't come around often.

This farm has been meticulously cared for over generations and features beautiful, clean timber, 42 tillable acres with a strong 117 PI, and multiple potential future lake sites. The property includes a substantial number of valuable, mature walnut trees, along with several other hardwood varieties.

The tract adjoins Butler Haynes Park, which serves as a natural refuge for the impressive deer and turkey populations that regularly utilize this farm. Extensive hard road frontage provides excellent access and creates outstanding opportunities for future home sites with scenic views.

A truly unique feature is a portion of the farm planted in giant pine trees in 1953, offering a park-like setting and a character rarely seen in Central Illinois.

The home and buildings on the property are all usable and are being sold as-is.

If you've been in the market for a park-like setting close to Peoria with strong annual income and exceptional hunting opportunities, this is a must-see property.

This property is co-listed with Brad Belser - IL Farm and Rec Land - Jim Maloof

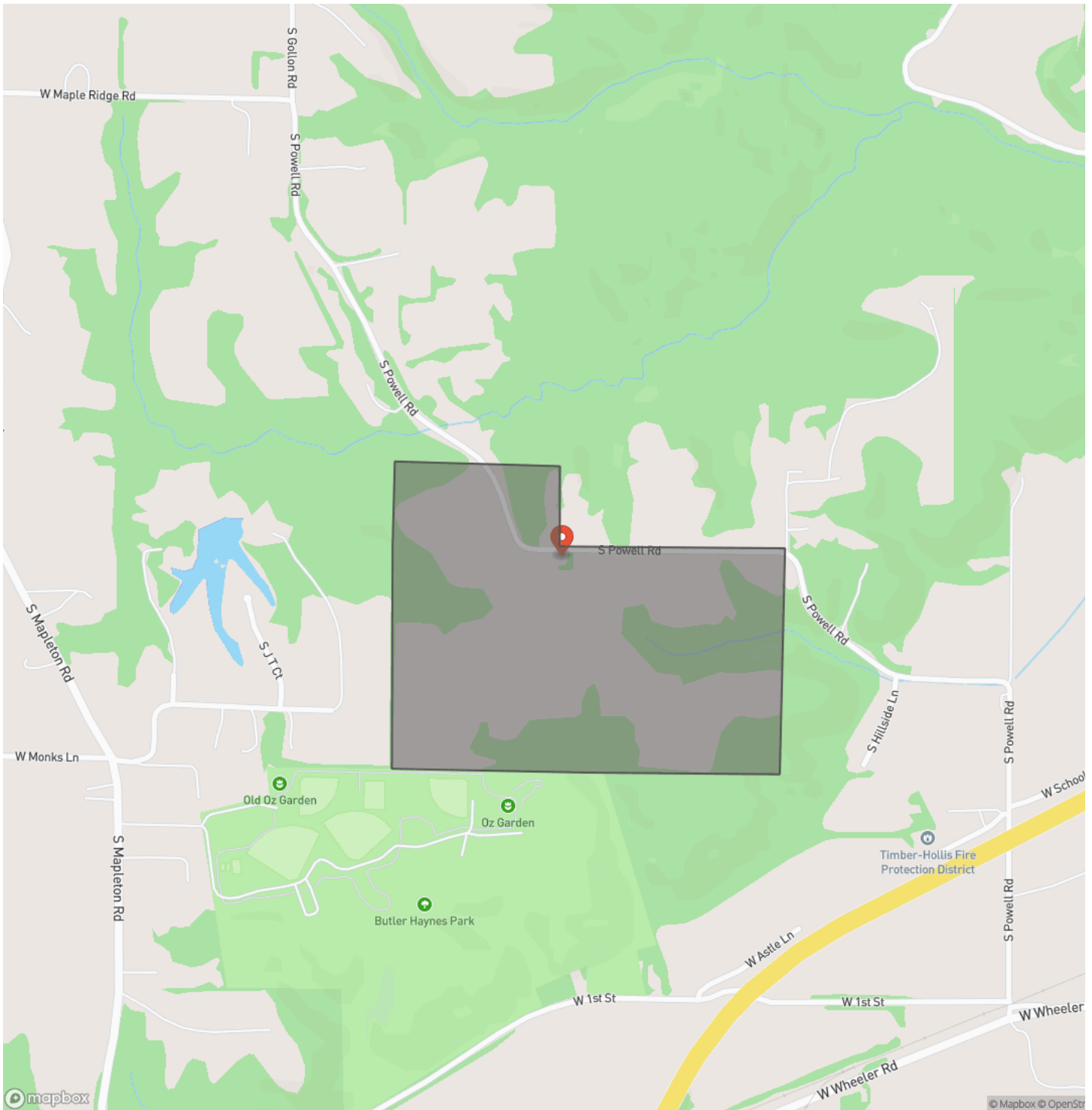
KEY FEATURES

- 42 tillable w/ 117 P.I.
- Ideal homesite
- High harvestable timber value - Big Walnuts
- Adjoins Park District with no hunting allowed Deer refuge!
- Outbuildings

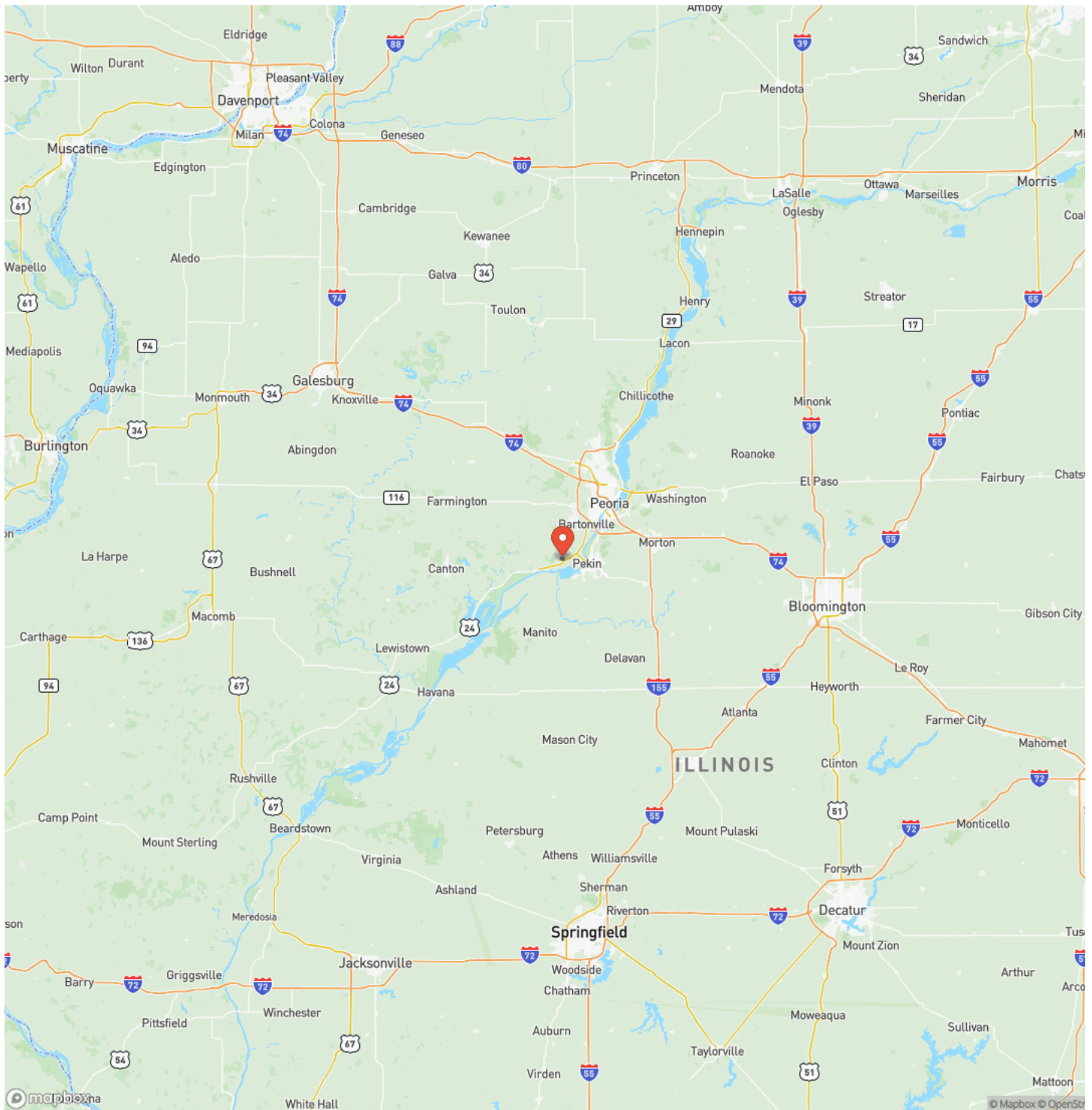
Peoria County, Illinois 81.5 Acres of Land for Sale
Peoria, IL / Peoria County



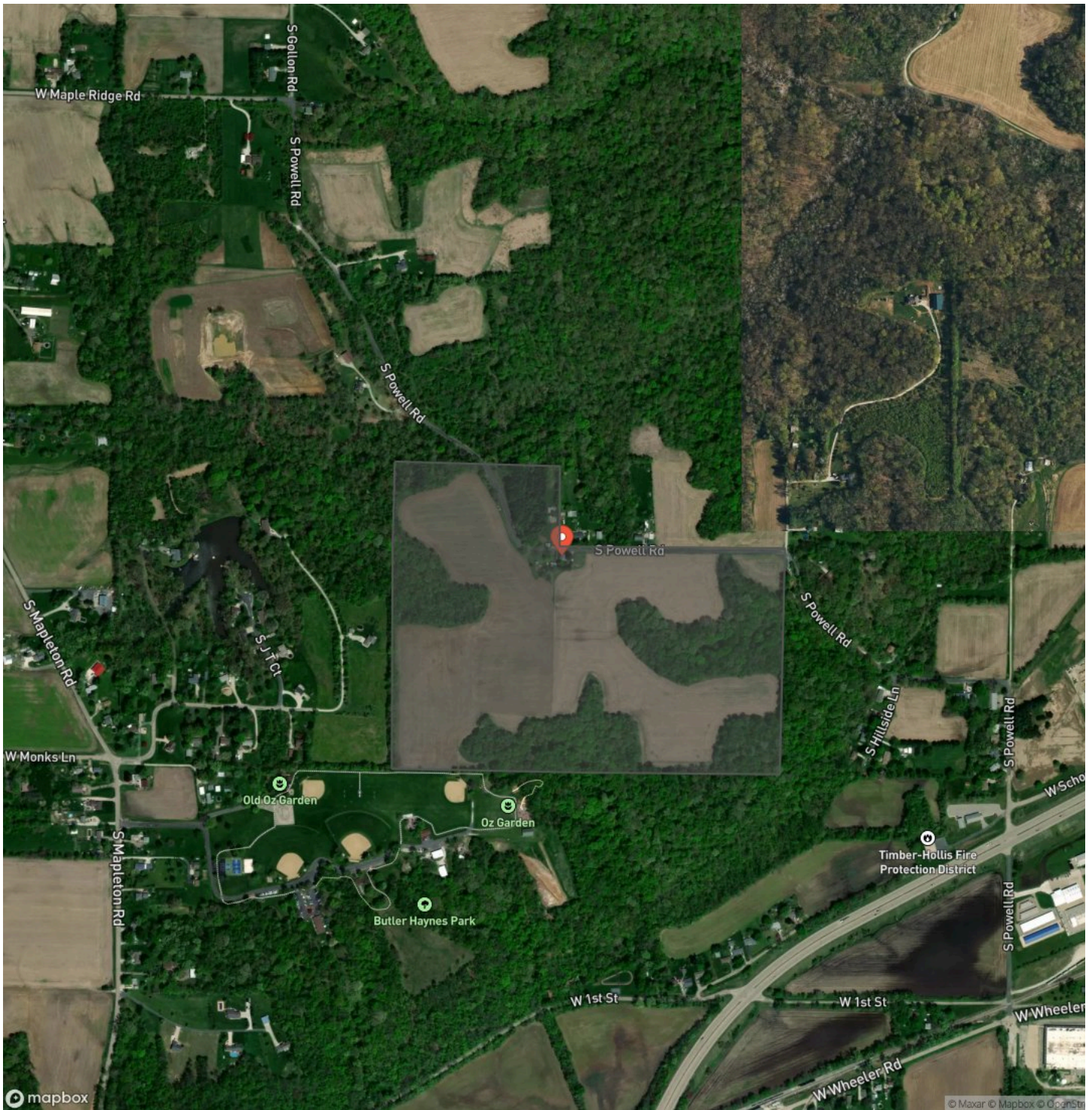
Locator Map



Locator Map



Satellite Map



Peoria County, Illinois 81.5 Acres of Land for Sale

Peoria, IL / Peoria County

LISTING REPRESENTATIVE

For more information contact:



Representative

Andrew Huber

Mobile

(309) 403-1183

Email

andrew@landguys.com

Address

City / State / Zip

Brimfield, IL 61517

NOTES

[illegible]

[illegible]

DISCLAIMERS

Information in this brochure is provided solely for information purposes and does not constitute an offer to sell or advertise real estate outside the states in which broker or agent licensed. The information presented has been obtained from sources deemed to be reliable, but is not guaranteed or warranted by the agent, broker, or the sellers of these properties. This offering is subject to errors, omissions, prior sale, price change, correction or withdrawal from the market without notice. All references to age, square footage, income, expenses, acreage, carrying capacity, and land classification, etc. are approximate. Prospective buyers are chargeable with and expected to conduct their own independent investigation of the information and the property and to rely only on those results. Sellers reserve the right to accept or reject any and all offers without liability to any buyer or cooperating broker.

Maps are provided for illustration purposes only, the accuracy is not warranted. Parcels on interactive maps are not adjusted to match aerial backgrounds. This information is for reference purposes only and is not a legal document. Data maps contain errors. The seller and seller's agent are making known to all potential buyers that there may be variations between the location of the existing fence lines and the legal description of the deeded property. Seller and seller's agent make no warranties with regard to the location of the fence lines in relationship to the deeded property lines, nor does the Seller make any warranties or representations with regard to the specific acreage contained within the fenced property lines. Seller is selling the property in an "as is" condition, which includes the location of the fences as they exist. Boundaries shown on the accompanying maps are approximate, based on county parcel data. The maps are not to scale. The accuracy of the maps is not guaranteed. Prospective buyers are encouraged to verify fence lines, deeded property lines and acreages using a licensed surveyor at their own expense.

LandGuys
4331 Conestoga Dr
Springfield, IL 62711
(217) 899-1240
www.landguys.com
