

**Barber County, Kansas 135 Acres of Land for Sale**  
000 Resort Rd  
Medicine Lodge, KS 67104

**\$472,500**  
135± Acres  
Barber County





## Barber County, Kansas 135 Acres of Land for Sale

### Medicine Lodge, KS / Barber County

---

#### **SUMMARY**

##### **Address**

000 Resort Rd

##### **City, State Zip**

Medicine Lodge, KS 67104

##### **County**

Barber County

##### **Type**

Hunting Land, Recreational Land

##### **Latitude / Longitude**

37.38568 / -98.58648

##### **Acreage**

135

##### **Price**

\$472,500

##### **Property Website**

<https://landguys.com/property/barber-county-kansas-135-acres-of-land-for-sale-barber-kansas/98409/>



## **Barber County, Kansas 135 Acres of Land for Sale**

### **Medicine Lodge, KS / Barber County**

---

#### **PROPERTY DESCRIPTION**

##### **Turn Key Kansas hunting property in the heart of unit 16 Barber County.**

Excellent Whitetail hunting nestled into the heart of unit 16 Barber County, Ks. Turnkey and ready to hunt.

This 135 acre tract in South Central Kansas offers premium wildlife habitat, rolling terrain, and year round recreational opportunity. This is a small tract with big potential, positioned in the center of some larger ranches making managing age structure on Whitetail deer much easier to accomplish.

Spread across the landscape are rolling hills and draws with thick grass, plumb thickets, and hard wood trees. This property also offers live water with a creek winding through the northwest side and a small pond.

Access throughout this property is excellent, supported by a well established and maintained road system offering access on two sides of the property.

If you are looking for a small tract with unmatched potential to kill trophy whitetail deer and Rio Grande turkey, Give me a call today to schedule your showing!

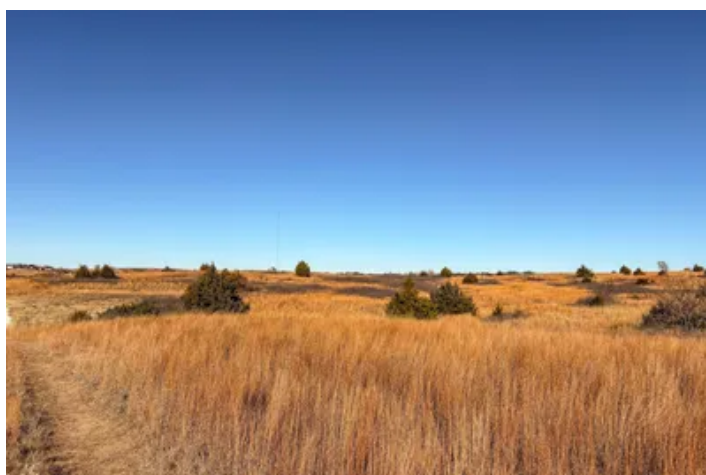
#### **KEY FEATURES**

- 135 acres located in South Central Kansas
- Unit 16 Barber County, Ks
- Small acreage with huge potential
- Live water including, winding creek bottom, and a small pond
- Strong population of Rio Grande Turkey
- History of Trophy Whitetail Deer
- Established foodplot
- Thick native grass along with switch grass planted in 2025

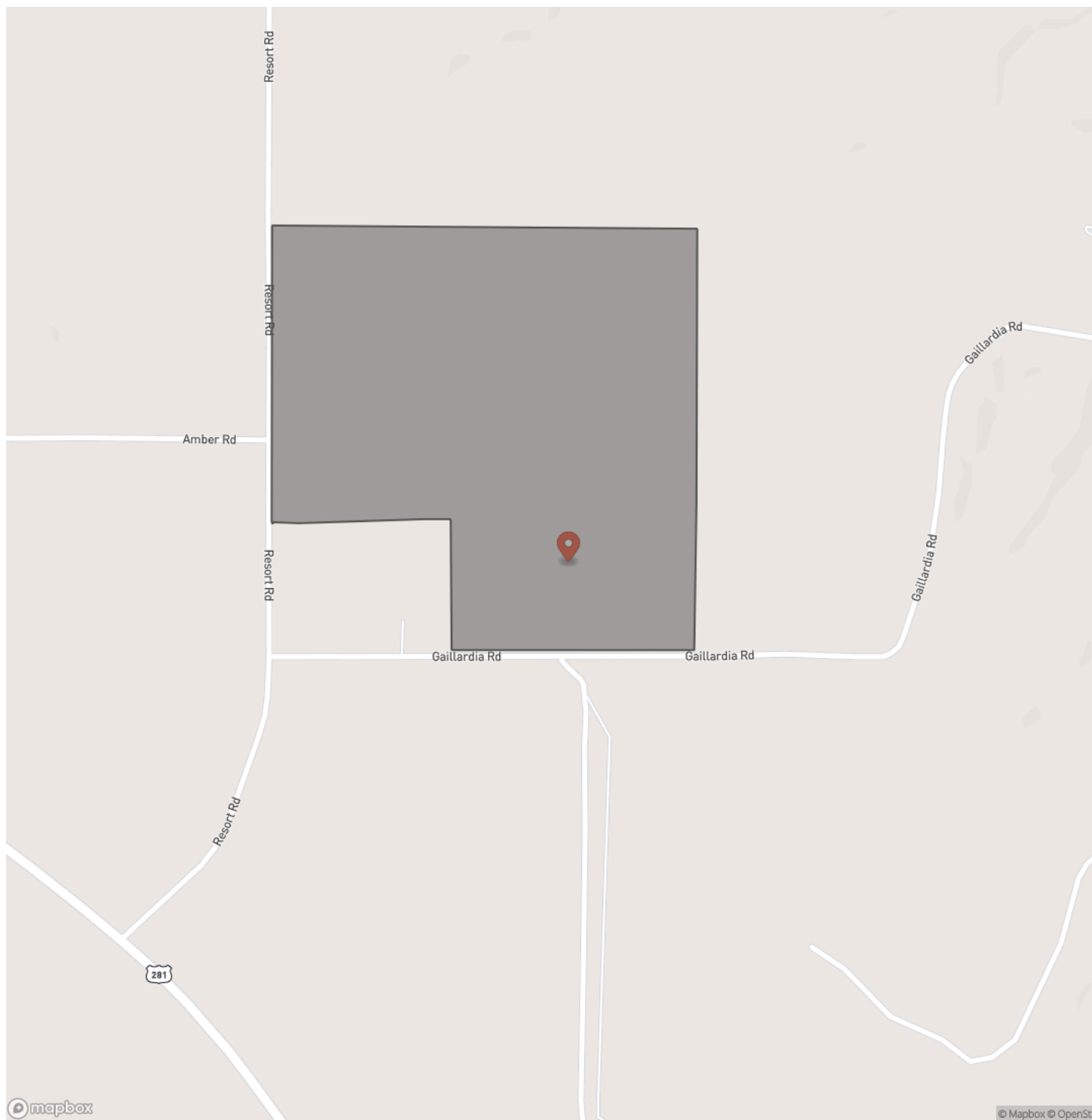


**Barber County, Kansas 135 Acres of Land for Sale**  
**Medicine Lodge, KS / Barber County**

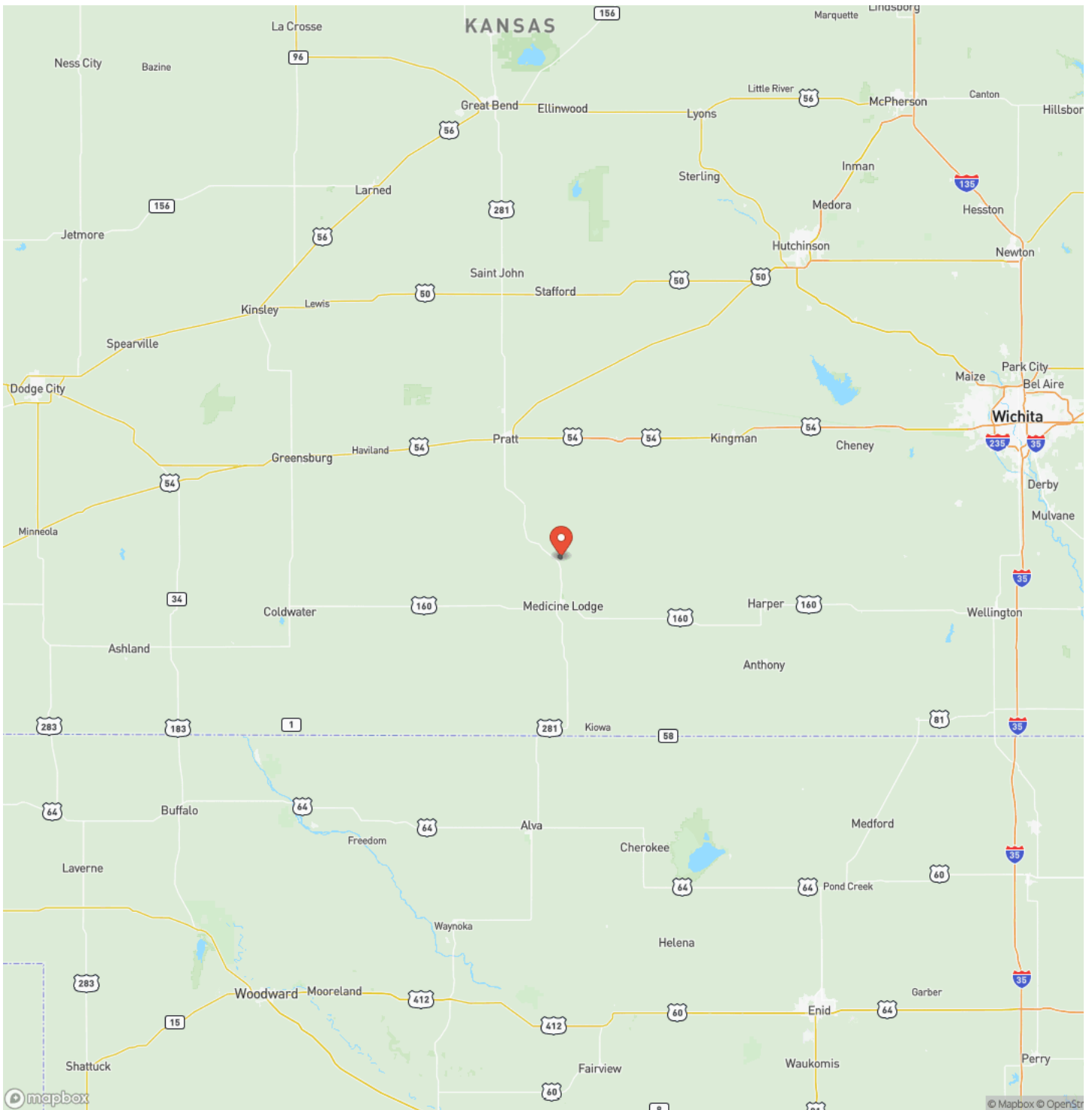
---



## Locator Map

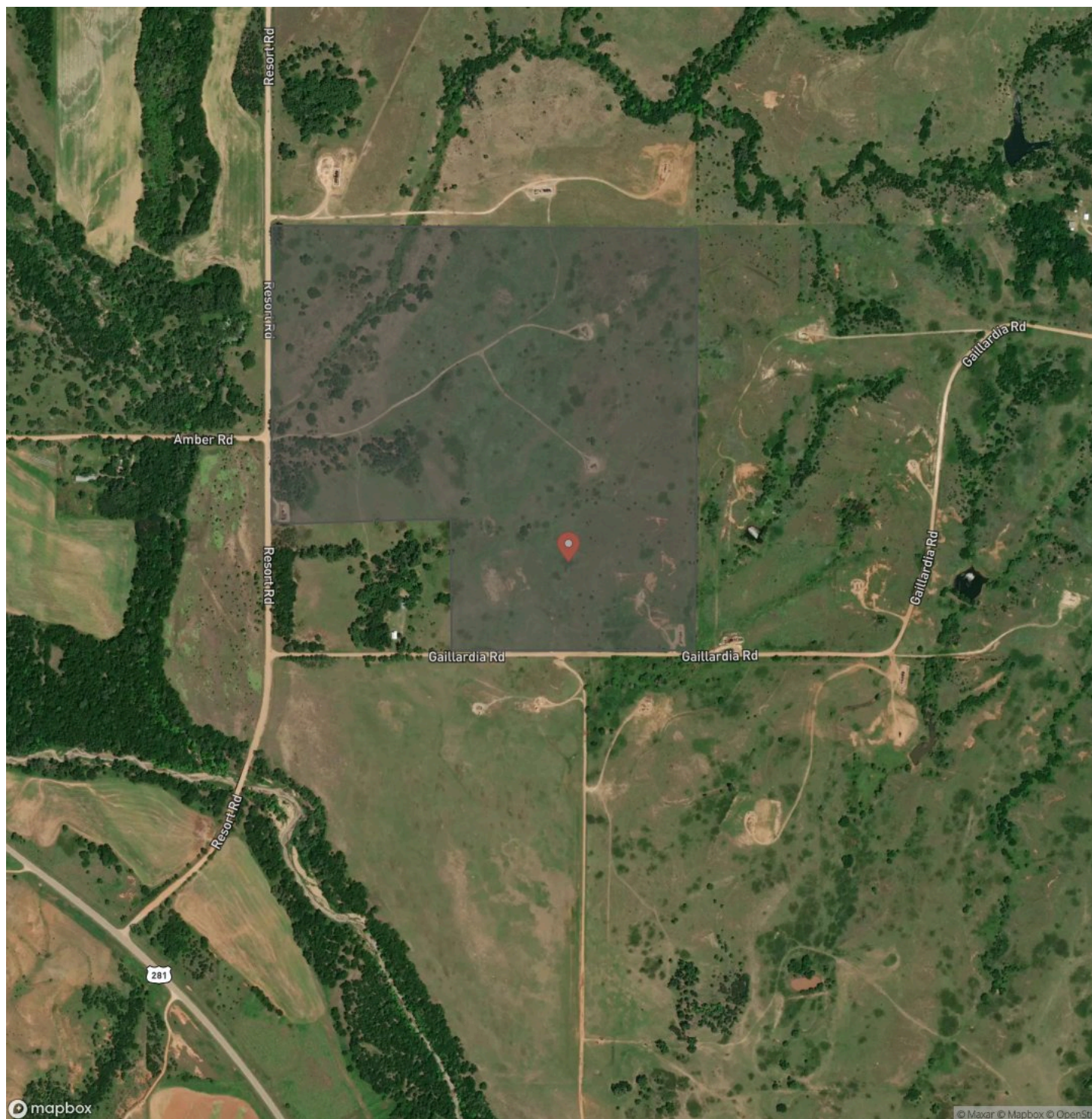


## Locator Map





## Satellite Map



## Barber County, Kansas 135 Acres of Land for Sale Medicine Lodge, KS / Barber County

## LISTING REPRESENTATIVE

**For more information contact:**



### Representative

Heath Landwehr

## Mobile

(620) 930-8129

## Email

heath@landguys.com

**Address**

City / State / Zip

## NOTES

[illegible]



## This image shows a single sheet of white paper with horizontal ruling lines. The lines are evenly spaced and run across the width of the page. There are no margins, text, or other markings on the paper.

## **DISCLAIMERS**

Information in this brochure is provided solely for information purposes and does not constitute an offer to sell or advertise real estate outside the states in which broker or agent licensed. The information presented has been obtained from sources deemed to be reliable, but is not guaranteed or warranted by the agent, broker, or the sellers of these properties. This offering is subject to errors, omissions, prior sale, price change, correction or withdrawal from the market without notice. All references to age, square footage, income, expenses, acreage, carrying capacity, and land classification, etc. are approximate. Prospective buyers are chargeable with and expected to conduct their own independent investigation of the information and the property and to rely only on those results. Sellers reserve the right to accept or reject any and all offers without liability to any buyer or cooperating broker.

Maps are provided for illustration purposes only, the accuracy is not warranted. Parcels on interactive maps are not adjusted to match aerial backgrounds. This information is for reference purposes only and is not a legal document. Data maps contain errors. The seller and seller's agent are making known to all potential buyers that there may be variations between the location of the existing fence lines and the legal description of the deeded property. Seller and seller's agent make no warranties with regard to the location of the fence lines in relationship to the deeded property lines, nor does the Seller make any warranties or representations with regard to the specific acreage contained within the fenced property lines. Seller is selling the property in an "as is" condition, which includes the location of the fences as they exist. Boundaries shown on the accompanying maps are approximate, based on county parcel data. The maps are not to scale. The accuracy of the maps is not guaranteed. Prospective buyers are encouraged to verify fence lines, deeded property lines and acreages using a licensed surveyor at their own expense.



---

**LandGuys**  
4331 Conestoga Dr  
Springfield, IL 62711  
(217) 899-1240  
[www.landguys.com](http://www.landguys.com)

---