

**Rose Lake Ranch - 1,515+/- Acre Premier Ranch in
Barber County, Kansas**
00000 S. Seminary Road
Lake City, KS 67071

\$9,847,500
1,515± Acres
Barber County



Rose Lake Ranch - 1,515+/- Acre Premier Ranch in Barber County, Kansas
Lake City, KS / Barber County

SUMMARY

Address

00000 S. Seminary Road

City, State Zip

Lake City, KS 67071

County

Barber County

Type

Recreational Land, Hunting Land, Ranches, Farms, Timberland

Latitude / Longitude

37.346346 / -98.813794

Taxes (Annually)

\$1,849

Acreage

1,515

Price

\$9,847,500

Property Website

<https://www.saltplainsproperties.com/property/rose-lake-ranch-1-515-acre-premier-ranch-in-barber-county-kansas/barber/kansas/98232/>



Rose Lake Ranch - 1,515+/- Acre Premier Ranch in Barber County, Kansas Lake City, KS / Barber County

PROPERTY DESCRIPTION

Rose Lake Ranch is a Kansas ranch built for those who value land that tells a story every season of the year.

Spanning **1,515± acres in Barber County**, this premier property sits in **Kansas Deer Management Unit 16**, widely regarded as one of the nation's premier trophy whitetail destinations. The layout is both expansive and intentional, offering a balance of water, habitat, agriculture, and access that allows the land to perform at a high level year-round.

Water defines Rose Lake Ranch. With **nearly a mile of Medicine Lodge River** and **a mile of Sand Creek**, the property benefits from constant movement of wildlife. Natural corridors create ideal travel routes for mature whitetails and turkeys, while also supporting waterfowl, upland birds, and an ecosystem that feels increasingly rare in this region.

At the heart of the ranch, a **40± acre floodable timber waterfowl impoundment**, engineered with **a water control structure** and over **6,500 feet of levees**. When flooded, the timber transforms into a classic waterfowl setting, hunts feel more like the Deep South than south central Kansas. This feature alone sets Rose Lake Ranch apart.

Beyond recreation, the ranch provides productive and dependable revenue streams. **141± acres of sub-irrigated cropland** and **381± acres of dryland cropland** provide consistent income while also supporting wildlife through food availability and habitat diversity.

Rose Lake Ranch reflects thoughtful management and development for the recreational enthusiast. **Six Redneck tower blinds**, **four Millennium ladder stands**, and **four established food plots** are strategically placed to take advantage of prevailing winds and natural movement. **Seven 3,000-pound Outback gravity feeders are in place to provide opportunity for year round feeding programs for wildlife**. A **quail feeder** helps maintain strong game bird and ground nesting species population. **Eight acres of sunflowers** are dedicated to dove hunting, adding yet another seasonal tradition to the calendar. **Six gated entrances** provide access and are conveniently located while privacy and security remain intact.

From fall archery hunts to winter waterfowl mornings, spring turkey seasons to summer evenings watching deer filter into food plots, Rose Lake Ranch offers true **year-round use**. It is a place to build traditions, host family and friends, and manage land with purpose.

In a region known for producing world-class whitetails and exceptional recreational opportunities, **Rose Lake Ranch stands out as a complete, well-rounded offering**.

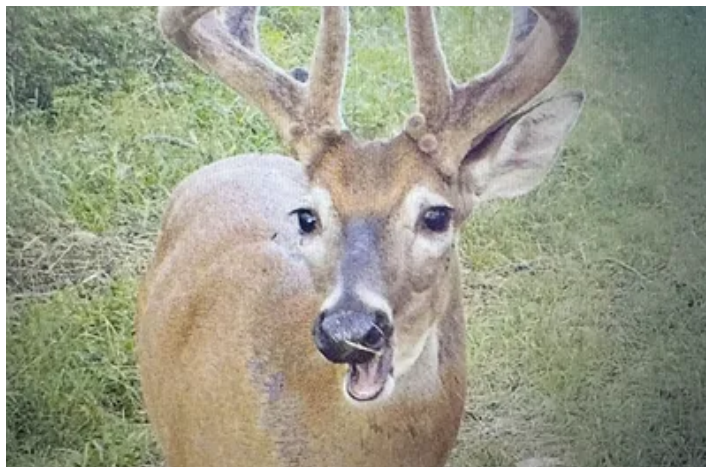
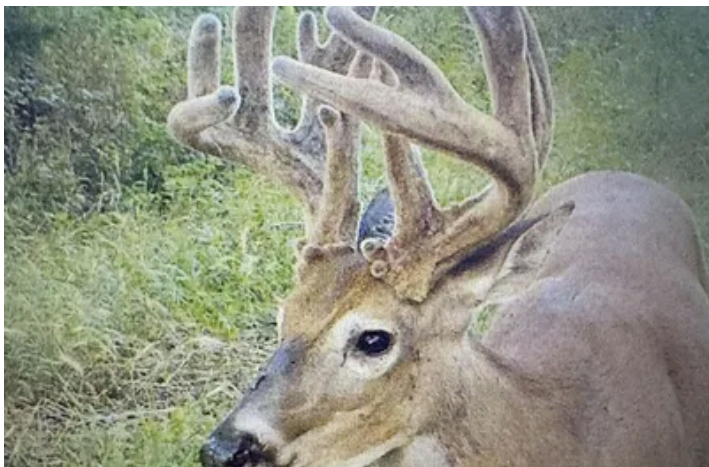
To schedule your private showing, please contact listing agent Shay Stephens at [620-388-3454](tel:620-388-3454) or shay@saltplainsproperties.com.

*A representative from Salt Plains Properties must be present on all showings.

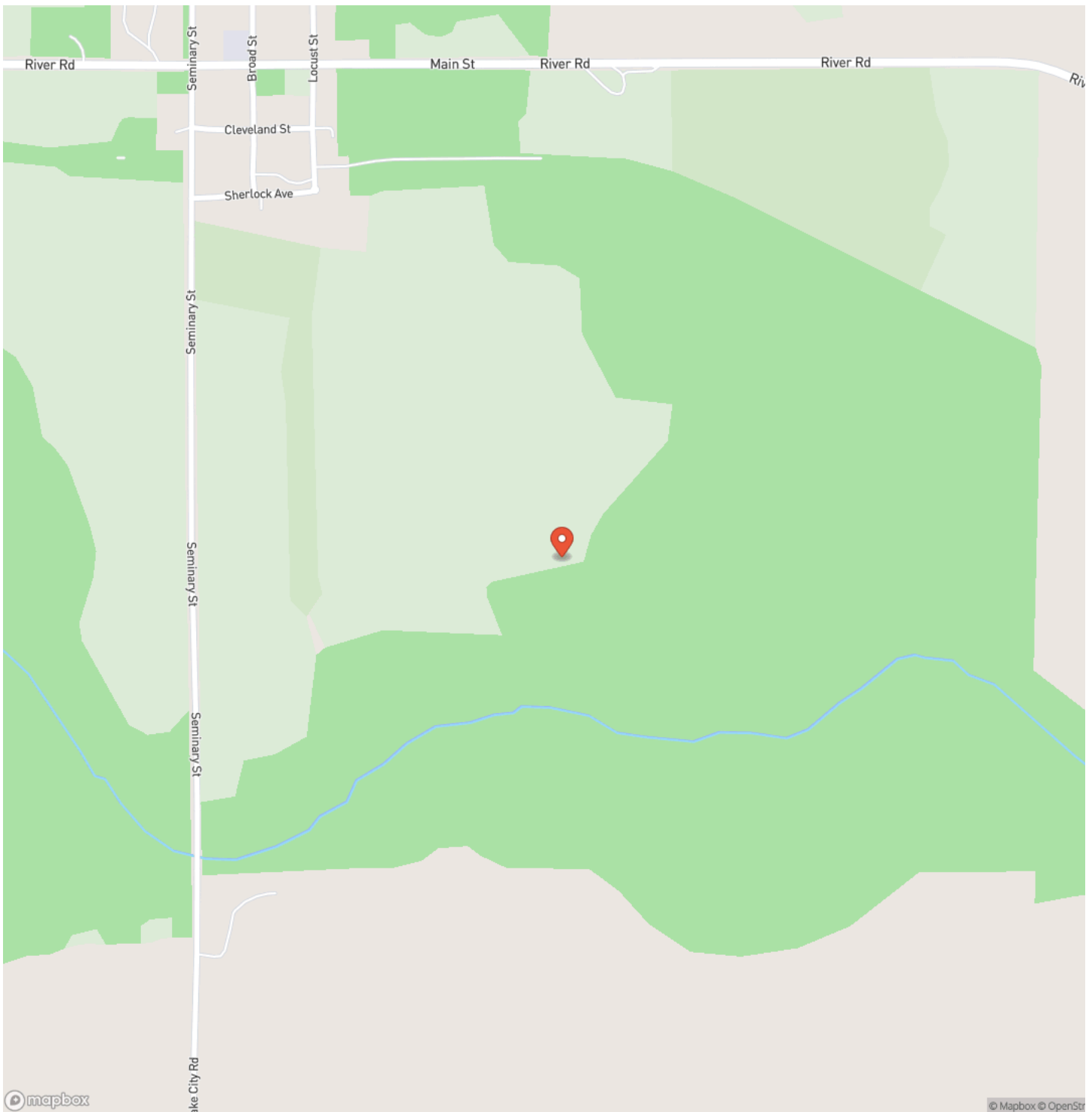
*Proof of financial capability will be required prior to scheduling a showing or releasing any further details about the property.



Rose Lake Ranch - 1,515+/- Acre Premier Ranch in Barber County, Kansas
Lake City, KS / Barber County

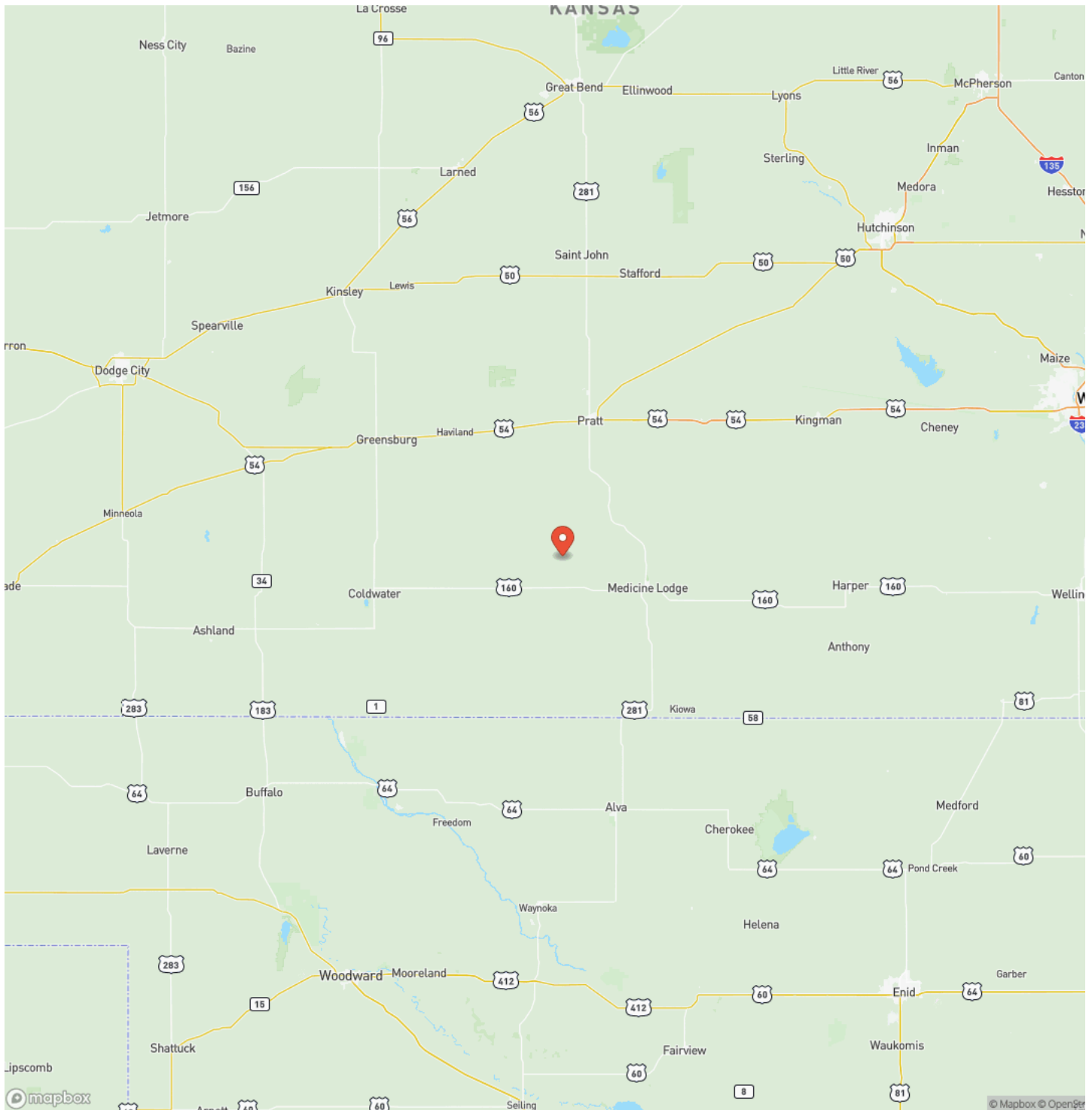


Locator Map

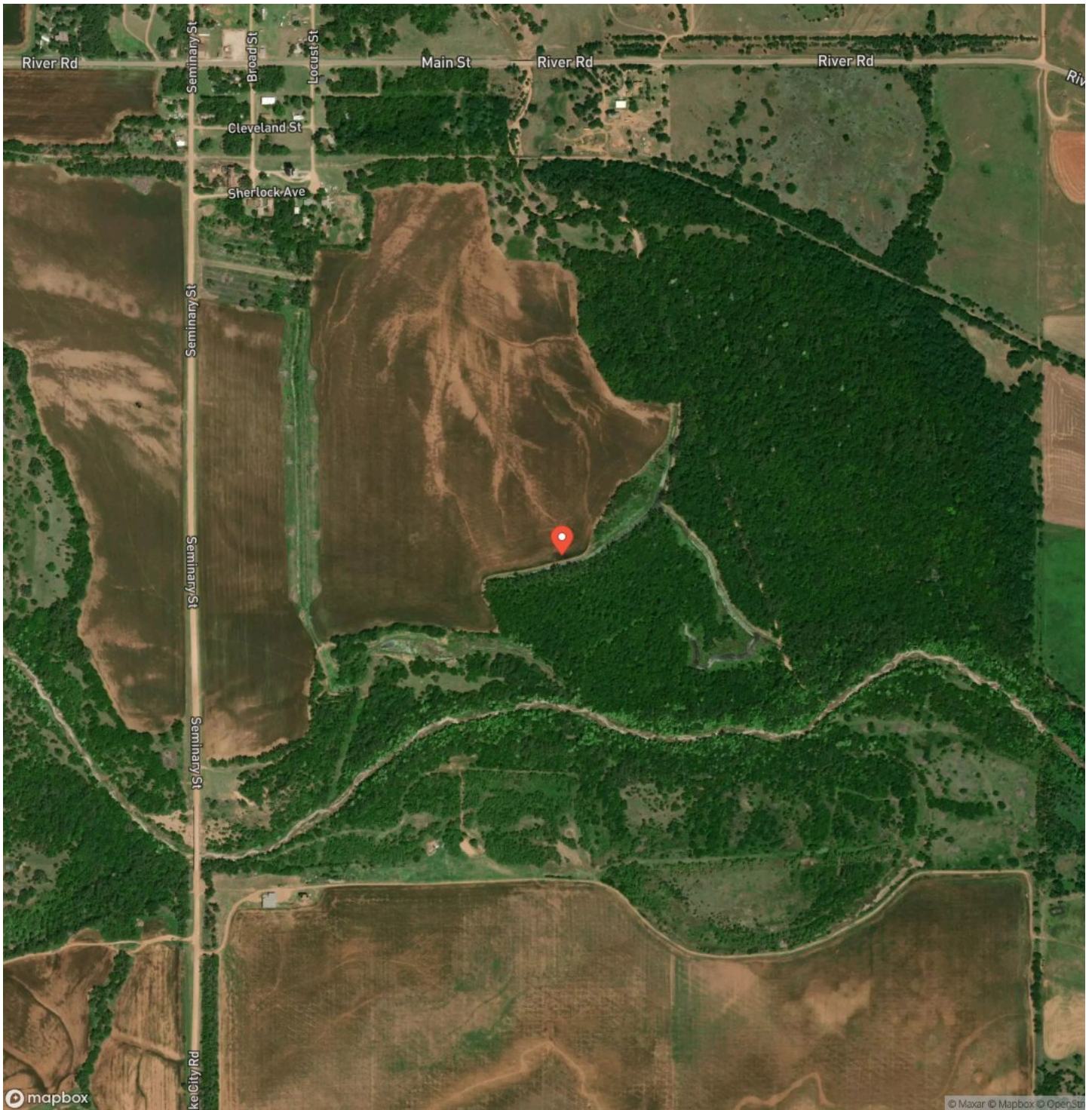


Rose Lake Ranch - 1,515+/- Acre Premier Ranch in Barber County, Kansas
Lake City, KS / Barber County

Locator Map



Satellite Map



**Rose Lake Ranch - 1,515+/- Acre Premier Ranch in Barber County, Kansas
Lake City, KS / Barber County**

LISTING REPRESENTATIVE

For more information contact:



Representative

Shay Stephens

Mobile

(620) 388-3454

Email

shay@saltplainsproperties.com

Address

16 E Ayers St

City / State / Zip

Edmond, OK 73034

NOTES

[illegible]

This image shows a full page of white paper with horizontal ruling lines. The lines are evenly spaced and extend across the width of the page. There are no margins, text, or other markings on the paper.



www.saltplainsproperties.com

DISCLAIMERS

The information presented across all marketing platforms, digital or print, regarding Rose Lake Ranch, including descriptions of acreage, boundaries, maps, aerial imagery, agricultural lands, wildlife habitat, improvements, road systems, and recreational attributes, has been prepared to provide an overview of this offering.

References to frontage along the Medicine Lodge River and Spring Creek, including depictions of water features, floodable timber, wetlands, and managed habitat areas, are believed to be accurate; however, all such representations are approximate and derived in part from mapping programs, public records, and other third-party sources utilized by Salt Plains Properties. Acreage figures, boundary lines, and feature locations are estimates and are provided for marketing and illustrative purposes only.

Prospective Buyers are encouraged to conduct their own independent inspections and due diligence regarding all matters material to their acquisition decision.

Salt Plains Properties and its representatives make no express or implied warranties regarding the information provided. All offerings are subject to prior sale, change in price, correction of errors, or withdrawal without notice.

Salt Plains Properties
16 E Ayers St
Edmond, OK 73034
(405) 406-7798
www.saltplainsproperties.com
