

**220 W. Jefferson St., Pittsfield, IL 62363**  
220 W. Jefferson  
Pittsfield, IL 62363

**\$259,900**  
0.29± Acres  
Pike County



**220 W. Jefferson St., Pittsfield, IL 62363**  
**Pittsfield, IL / Pike County**

---

## **SUMMARY**

### **Address**

220 W. Jefferson

### **City, State Zip**

Pittsfield, IL 62363

### **County**

Pike County

### **Type**

Residential Property, Single Family

### **Latitude / Longitude**

39.60935 / -90.808498

### **Dwelling Square Feet**

1,736

### **Bedrooms / Bathrooms**

3 / 2

### **Acreage**

0.29

### **Price**

\$259,900

### **Property Website**

<https://ridgelinesalesgroup.com/property/220-w-jefferson-st-pittsfield-il-62363/pike/illinois/97648/>



**PROPERTY DESCRIPTION**

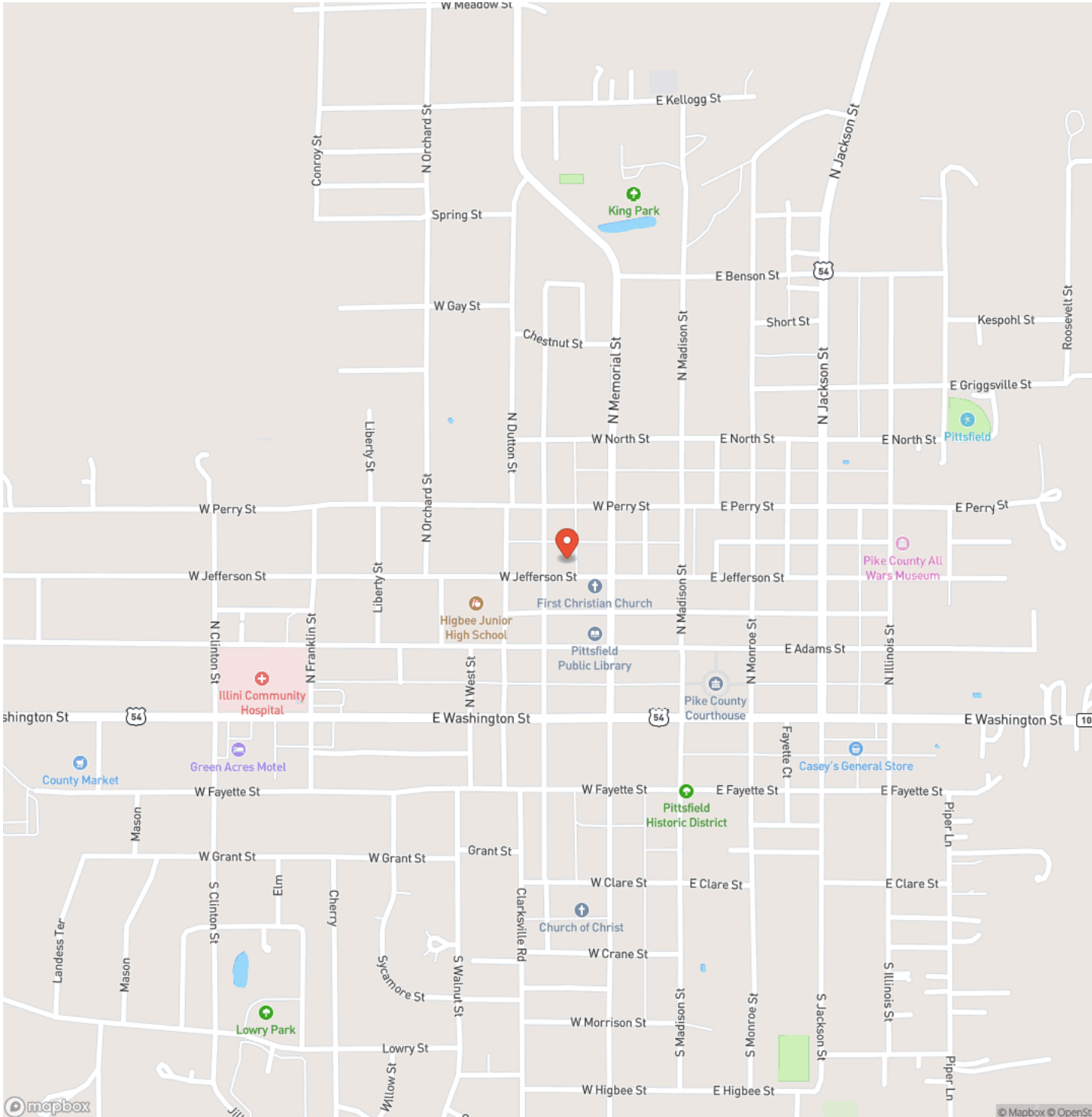
Well-maintained 3-bedroom, 2-bath home built in 2021 featuring a functional, open layout with spacious bedrooms, including a primary bedroom with an ensuite-style bath. The primary bath offers a freestanding soaking tub along with a separate walk-in shower, providing both comfort and convenience. The kitchen comes fully equipped with all appliances staying, making this home truly move-in ready. French doors off the main living area lead to a newly built deck/patio added in 2025, creating a great space for outdoor entertaining, grilling, or relaxing. The vinyl-fenced backyard provides privacy and room to enjoy, complete with a storage shed for lawn equipment, tools, or extra storage. An oversized garage offers ample space for vehicles, hobbies, or additional storage. Low-maintenance living with modern construction-this newer home offers the benefits of recent construction without the wait.



220 W. Jefferson St., Pittsfield, IL 62363  
Pittsfield, IL / Pike County

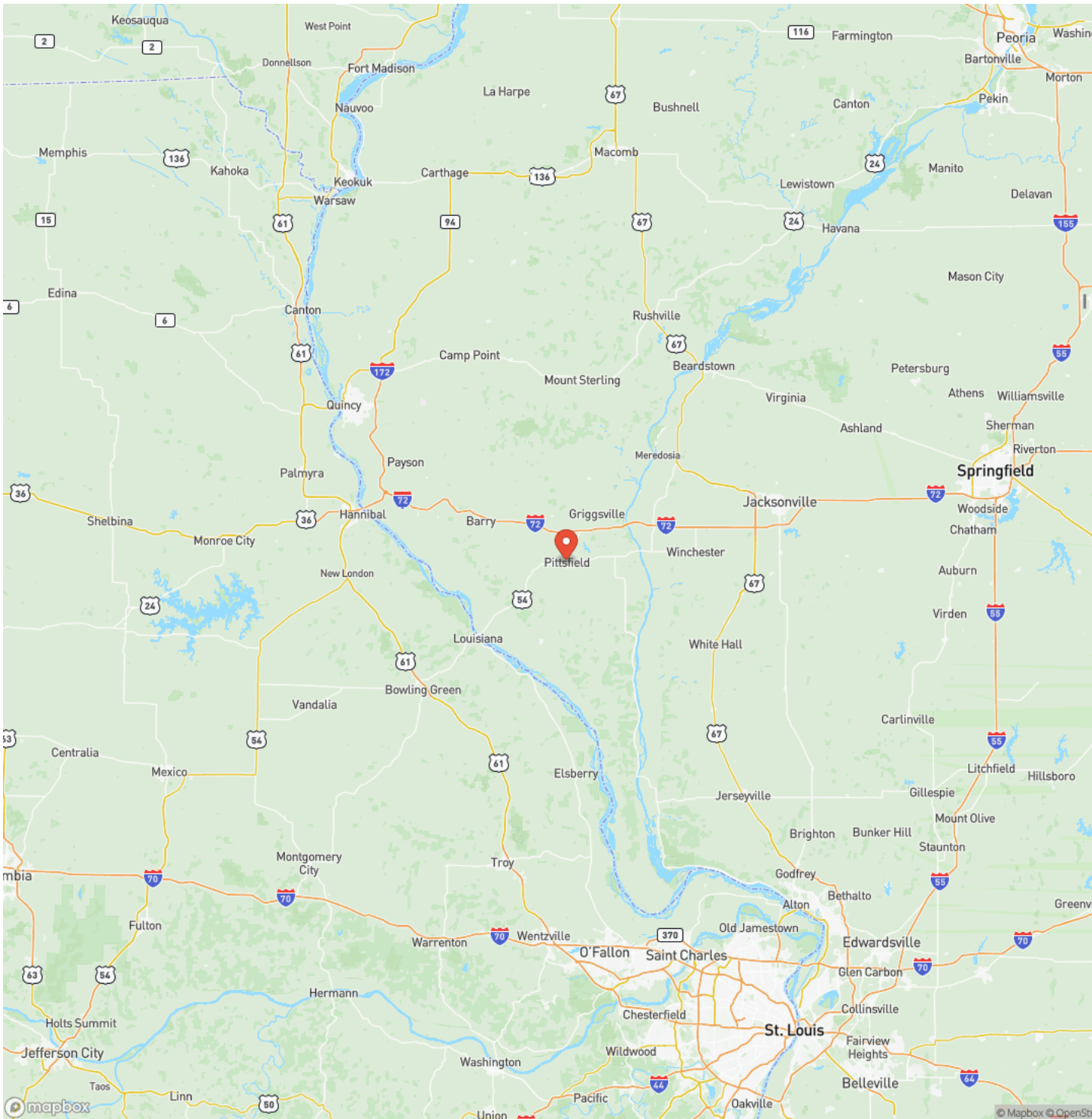


## Locator Map



## Pittsfield, IL / Pike County

## Locator Map



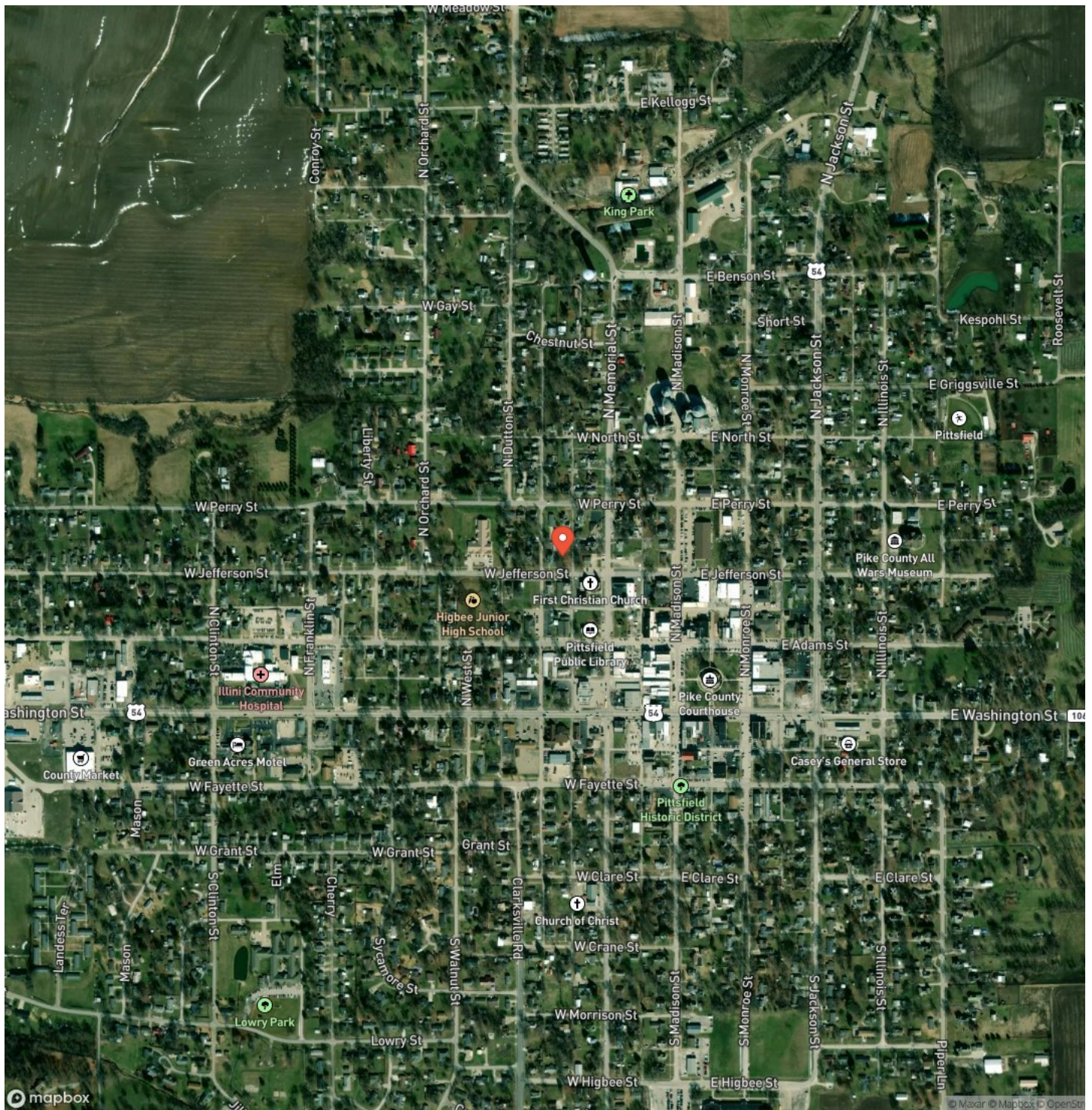
**MORE INFO ONLINE:**

**[www.ridgelinesalesgroup.com](http://www.ridgelinesalesgroup.com)**



220 W. Jefferson St., Pittsfield, IL 62363  
Pittsfield, IL / Pike County

## Satellite Map



**MORE INFO ONLINE:**

[www.ridgelinesalesgroup.com](http://www.ridgelinesalesgroup.com)

**220 W. Jefferson St., Pittsfield, IL 62363**  
**Pittsfield, IL / Pike County**

## LISTING REPRESENTATIVE

**For more information contact:**



### Representative

Lacey Hoagland

## Mobile

(618) 535-3800

## Office

(217) 285-5800

## Email

lhoagland@ridgelinesalesgroup.com

**Address**

## City / State / Zip

Pittsfield, IL 62363

## NOTES

[illegible]



[illegible]

## **DISCLAIMERS**

Information in this brochure is provided solely for information purposes and does not constitute an offer to sell or advertise real estate outside the states in which broker or agent licensed. The information presented has been obtained from sources deemed to be reliable, but is not guaranteed or warranted by the agent, broker, or the sellers of these properties. This offering is subject to errors, omissions, prior sale, price change, correction or withdrawal from the market without notice. All references to age, square footage, income, expenses, acreage, carrying capacity, and land classification, etc. are approximate. Prospective buyers are chargeable with and expected to conduct their own independent investigation of the information and the property and to rely only on those results. Sellers reserve the right to accept or reject any and all offers without liability to any buyer or cooperating broker.

Maps are provided for illustration purposes only, the accuracy is not warranted. Parcels on interactive maps are not adjusted to match aerial backgrounds. This information is for reference purposes only and is not a legal document. Data maps contain errors. The seller and seller's agent are making known to all potential buyers that there may be variations between the location of the existing fence lines and the legal description of the deeded property. Seller and seller's agent make no warranties with regard to the location of the fence lines in relationship to the deeded property lines, nor does the Seller make any warranties or representations with regard to the specific acreage contained within the fenced property lines. Seller is selling the property in an "as is" condition, which includes the location of the fences as they exist. Boundaries shown on the accompanying maps are approximate, based on county parcel data. The maps are not to scale. The accuracy of the maps is not guaranteed. Prospective buyers are encouraged to verify fence lines, deeded property lines and acreages using a licensed surveyor at their own expense.



---

**Ridgeline Sales Group, LLC**  
116 W. Washington St.  
Pittsfield, IL 62363  
217-285-5800  
[www.ridgelinesalesgroup.com](http://www.ridgelinesalesgroup.com)

---