

Fulton County, Illinois 52 Acres of Land for Sale
00 Hwy 97
Fairview, IL 61432

\$510,000
52± Acres
Fulton County



Fulton County, Illinois 52 Acres of Land for Sale

Fairview, IL / Fulton County

SUMMARY

Address

00 Hwy 97

City, State Zip

Fairview, IL 61432

County

Fulton County

Type

Farms, Hunting Land, Recreational Land

Latitude / Longitude

40.658337 / -90.168379

Acreage

52

Price

\$510,000

Property Website

<https://landguys.com/property/fulton-county-illinois-52-acres-of-land-for-sale-fulton-illinois/99105/>



Fulton County, Illinois 52 Acres of Land for Sale

Fairview, IL / Fulton County

PROPERTY DESCRIPTION

Productive tillable farm, with prime hunting, near Fairview in Fulton County, Illinois.

Located just north of Fairview in Fulton County, Illinois, this productive tillable farm presents an excellent opportunity for farmers and investors looking to expand their land portfolio. With quality soils and a strong production history, this property is well suited for growing corn and soybeans.

In addition to its agricultural value, the farm offers outstanding recreational potential. The surrounding habitat supports healthy populations of deer, turkey, and waterfowl, making it an attractive option for those seeking both income and hunting opportunities.

Whether you are looking to add to your current operation or invest in high quality Illinois farmland, this property deserves your attention. Call today to schedule your showing.

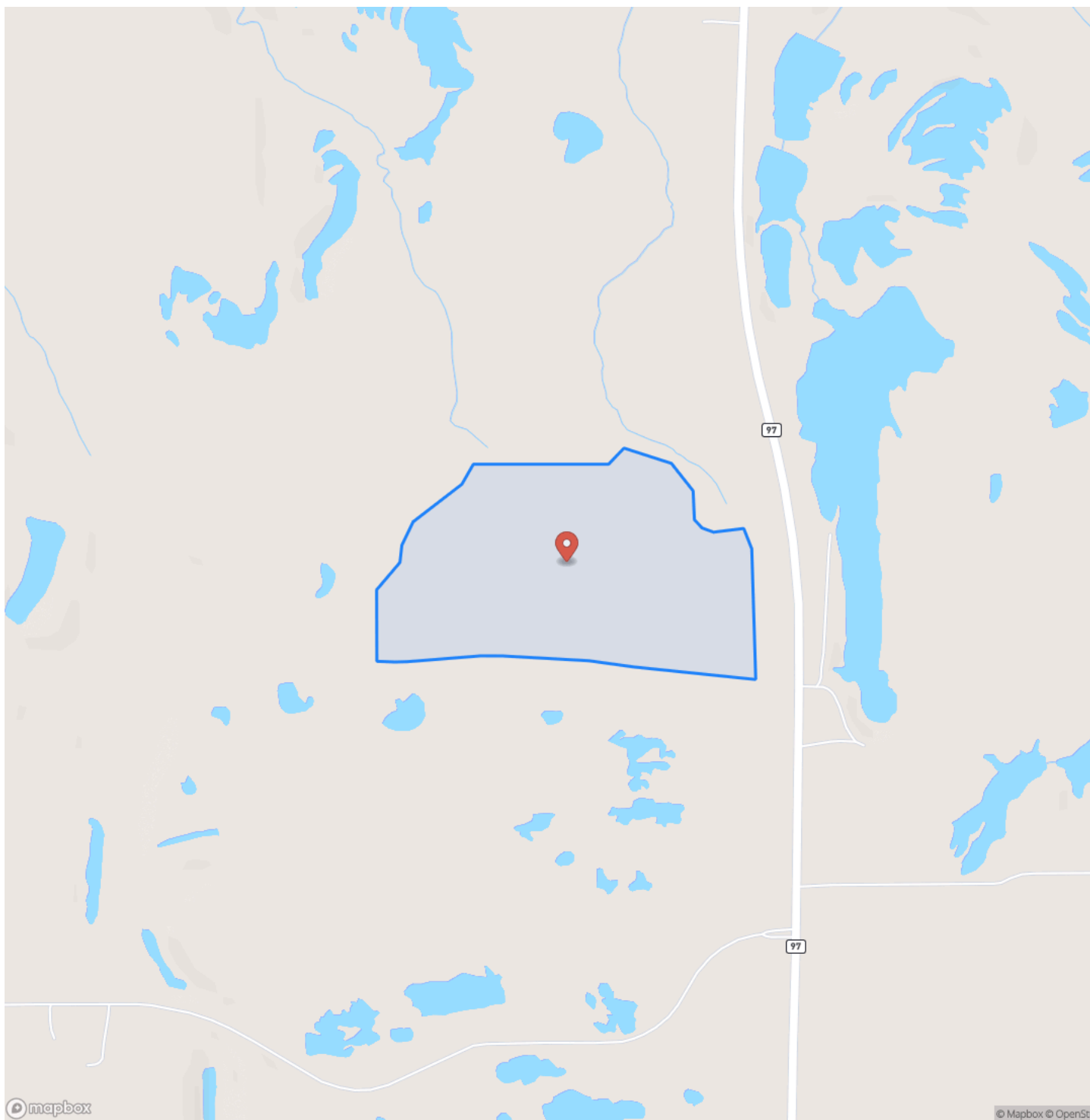
KEY FEATURES

- Tillable
- Waterfowl
- Whitetail Deer
- Investment
- Turkey
- Corn
- Soybeans
- Farming

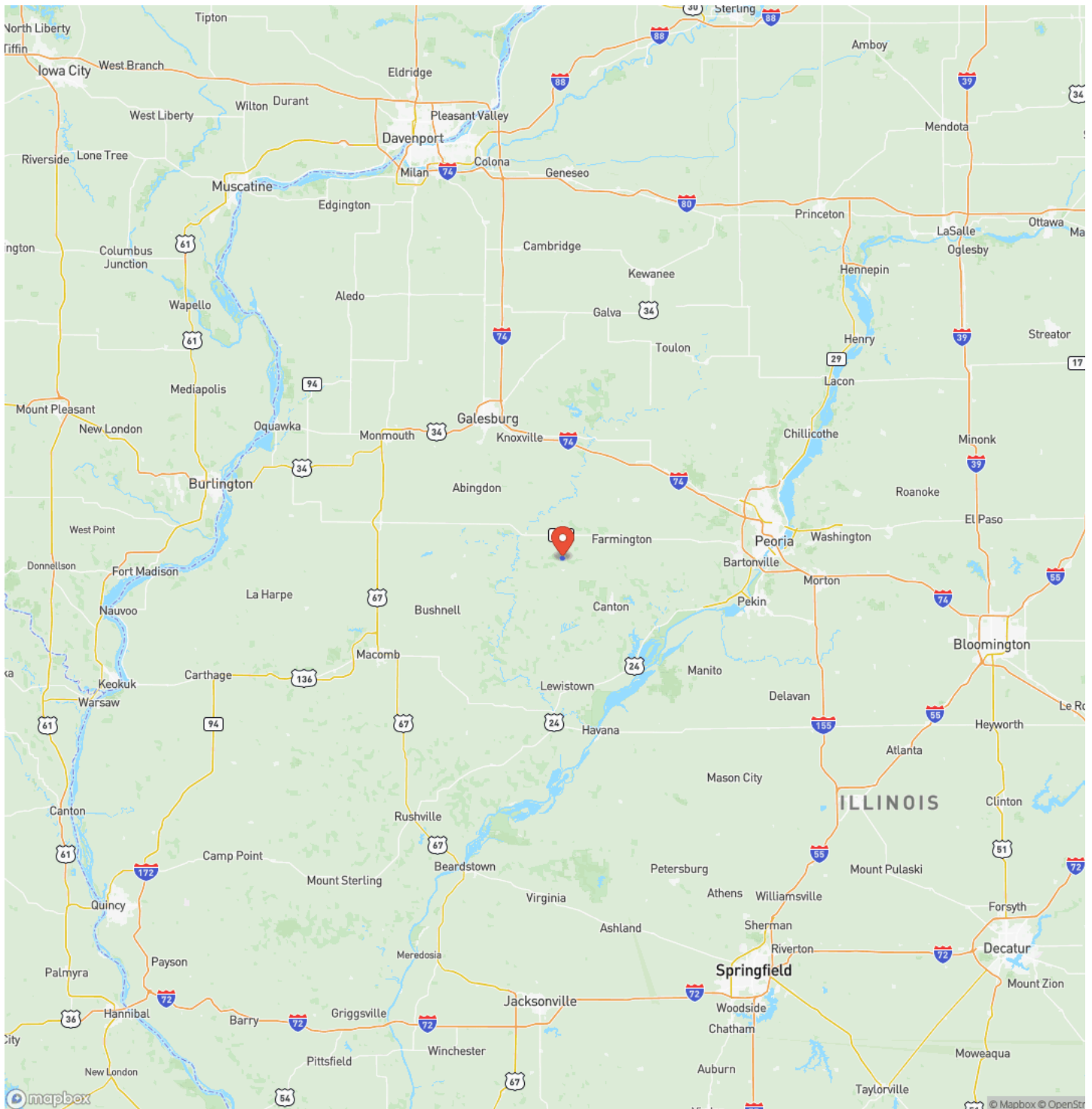
Fulton County, Illinois 52 Acres of Land for Sale
Fairview, IL / Fulton County



Locator Map



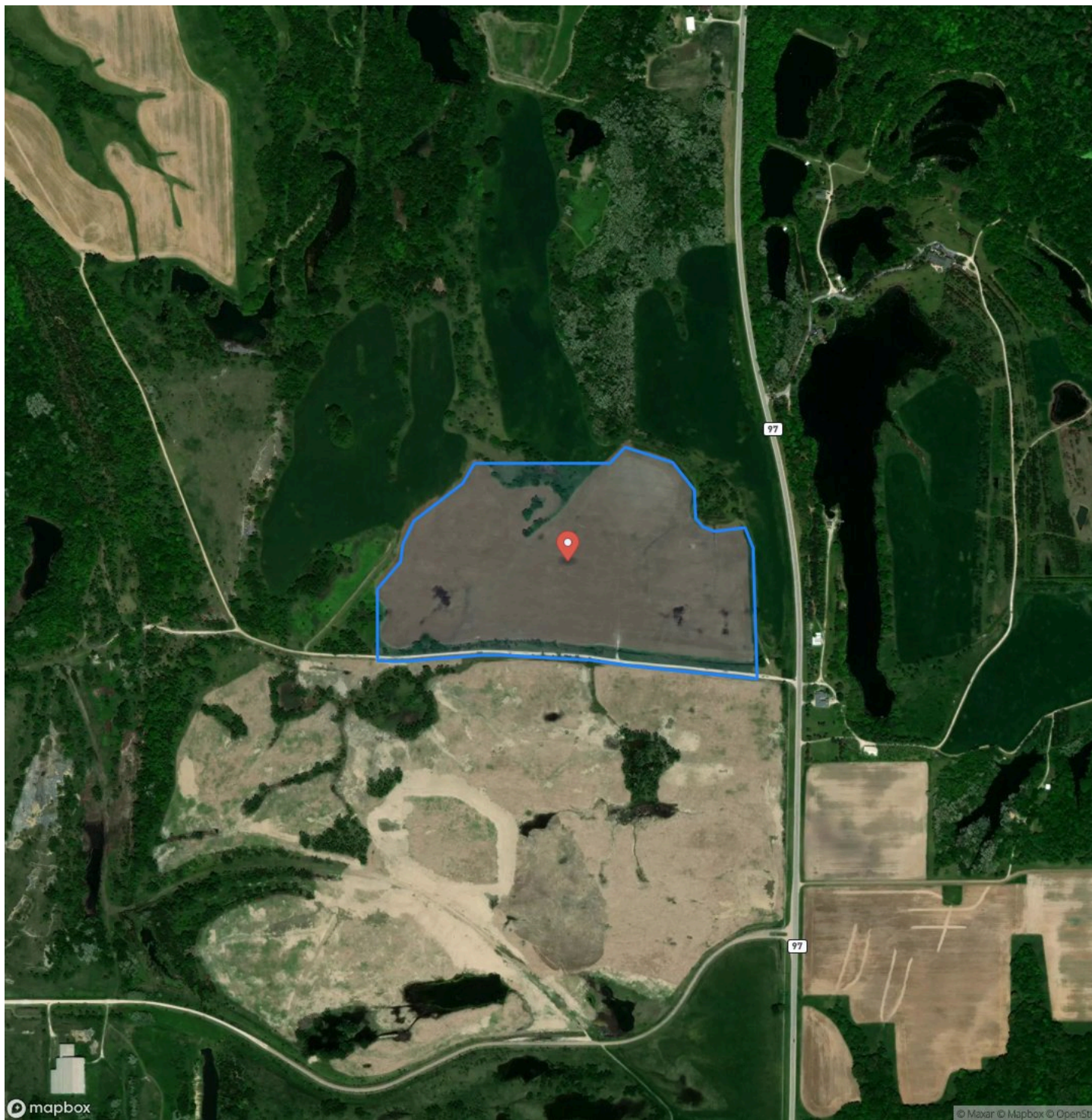
Locator Map



MORE INFO ONLINE:

www.landguys.com

Satellite Map



Fulton County, Illinois 52 Acres of Land for Sale Fairview, IL / Fulton County

LISTING REPRESENTATIVE

For more information contact:



Representative

Adam Fencik

Mobile

(217) 242-0716

Office

(217) 899-1240

Email

adam@landguys.com

Address

City / State / Zip

NOTES

[illegible]

This image shows a blank sheet of white paper with horizontal ruling lines. The lines are evenly spaced and run across the width of the page. There are no margins, text, or other markings on the paper.

DISCLAIMERS

Information in this brochure is provided solely for information purposes and does not constitute an offer to sell or advertise real estate outside the states in which broker or agent licensed. The information presented has been obtained from sources deemed to be reliable, but is not guaranteed or warranted by the agent, broker, or the sellers of these properties. This offering is subject to errors, omissions, prior sale, price change, correction or withdrawal from the market without notice. All references to age, square footage, income, expenses, acreage, carrying capacity, and land classification, etc. are approximate. Prospective buyers are chargeable with and expected to conduct their own independent investigation of the information and the property and to rely only on those results. Sellers reserve the right to accept or reject any and all offers without liability to any buyer or cooperating broker.

Maps are provided for illustration purposes only, the accuracy is not warranted. Parcels on interactive maps are not adjusted to match aerial backgrounds. This information is for reference purposes only and is not a legal document. Data maps contain errors. The seller and seller's agent are making known to all potential buyers that there may be variations between the location of the existing fence lines and the legal description of the deeded property. Seller and seller's agent make no warranties with regard to the location of the fence lines in relationship to the deeded property lines, nor does the Seller make any warranties or representations with regard to the specific acreage contained within the fenced property lines. Seller is selling the property in an "as is" condition, which includes the location of the fences as they exist. Boundaries shown on the accompanying maps are approximate, based on county parcel data. The maps are not to scale. The accuracy of the maps is not guaranteed. Prospective buyers are encouraged to verify fence lines, deeded property lines and acreages using a licensed surveyor at their own expense.

LandGuys
4331 Conestoga Dr
Springfield, IL 62711
(217) 899-1240
www.landguys.com
