

Weis Ranch
11271 US 290
Harper, TX 78631

\$3,049,999
126.17± Acres
Kimble County



Weis Ranch
Harper, TX / Kimble County

SUMMARY

Address

11271 US 290

City, State Zip

Harper, TX 78631

County

Kimble County

Type

Hunting Land, Ranches, Recreational Land, Residential Property

Latitude / Longitude

30.298549 / -99.340228

Dwelling Square Feet

4,974

Bedrooms / Bathrooms

5 / 5.5

Acreage

126.17

Price

\$3,049,999

Property Website

<https://ranchrealestate.com/property/weis-ranch/kimble/texas/98365/>



Weis Ranch **Harper, TX / Kimble County**

PROPERTY DESCRIPTION

Nestled in the heart of the Texas Hill Country, this exceptional luxury ranch offers a rare blend of refined living, premier recreational opportunities, and first-class improvements. The stunning 4,174± square-foot custom residence is thoughtfully designed for both comfort and entertaining, featuring a separate guest quarters, a basement game room, and an attached three-car garage-perfect for hosting family and friends in true Hill Country style.

Complementing the main home is an impressive 3,200± square-foot insulated shop, complete with an 800± square-foot loft apartment and a unique three-story lookout tower that delivers sweeping views of the surrounding countryside. Outdoors, a beautifully landscaped koi pond with a water fountain serves as a tranquil focal point, framed by mature fruit trees and manicured grounds.

Water is abundant and secure with three wells in place, including an Edwards well, a Trinity well, and a dedicated solar-powered well supplying the pond-ensuring reliability for both residential and ranch operations.

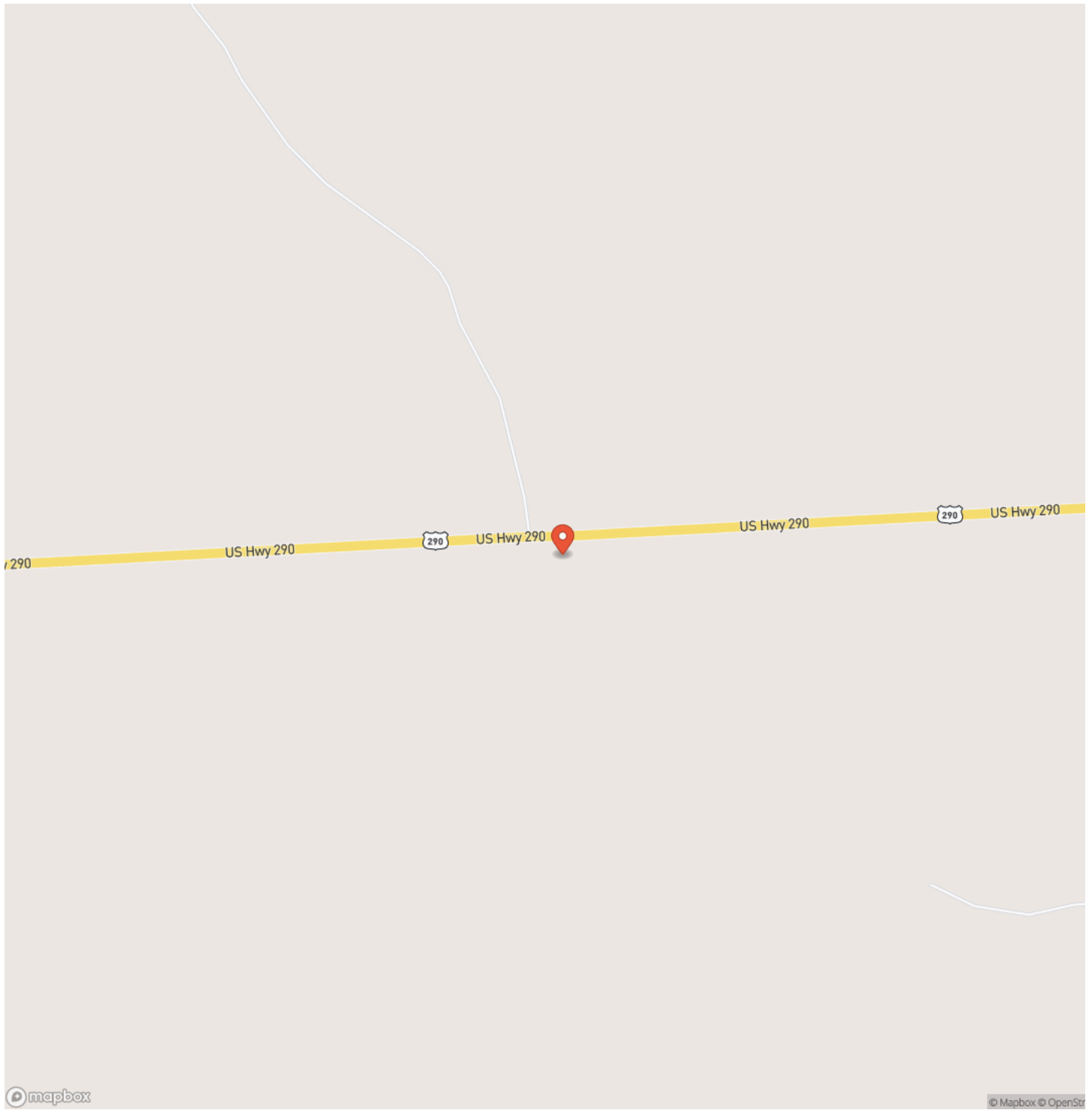
The land is equally remarkable, offering prime habitat for a diverse array of wildlife and livestock. The ranch is home to trophy-quality oryx, axis, and blackbuck, along with thriving populations of turkey and native whitetail deer, making it an outstanding Texas exotic hunting ranch and wildlife retreat.

This turnkey Hill Country property seamlessly combines luxury living, recreational excellence, and long-term investment potential-an extraordinary opportunity to own a premier ranch in one of Texas' most coveted regions.

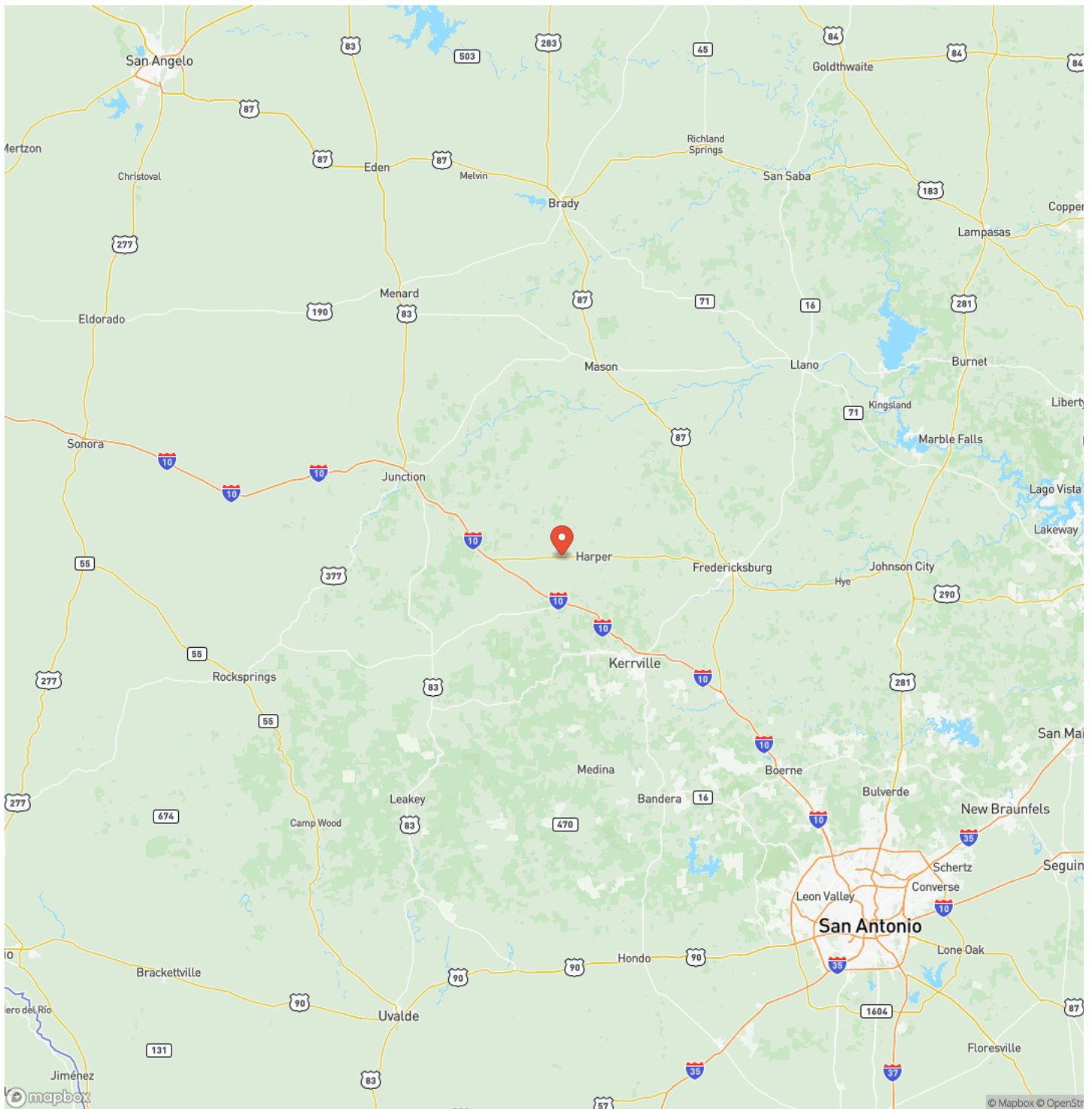
Weis Ranch
Harper, TX / Kimble County



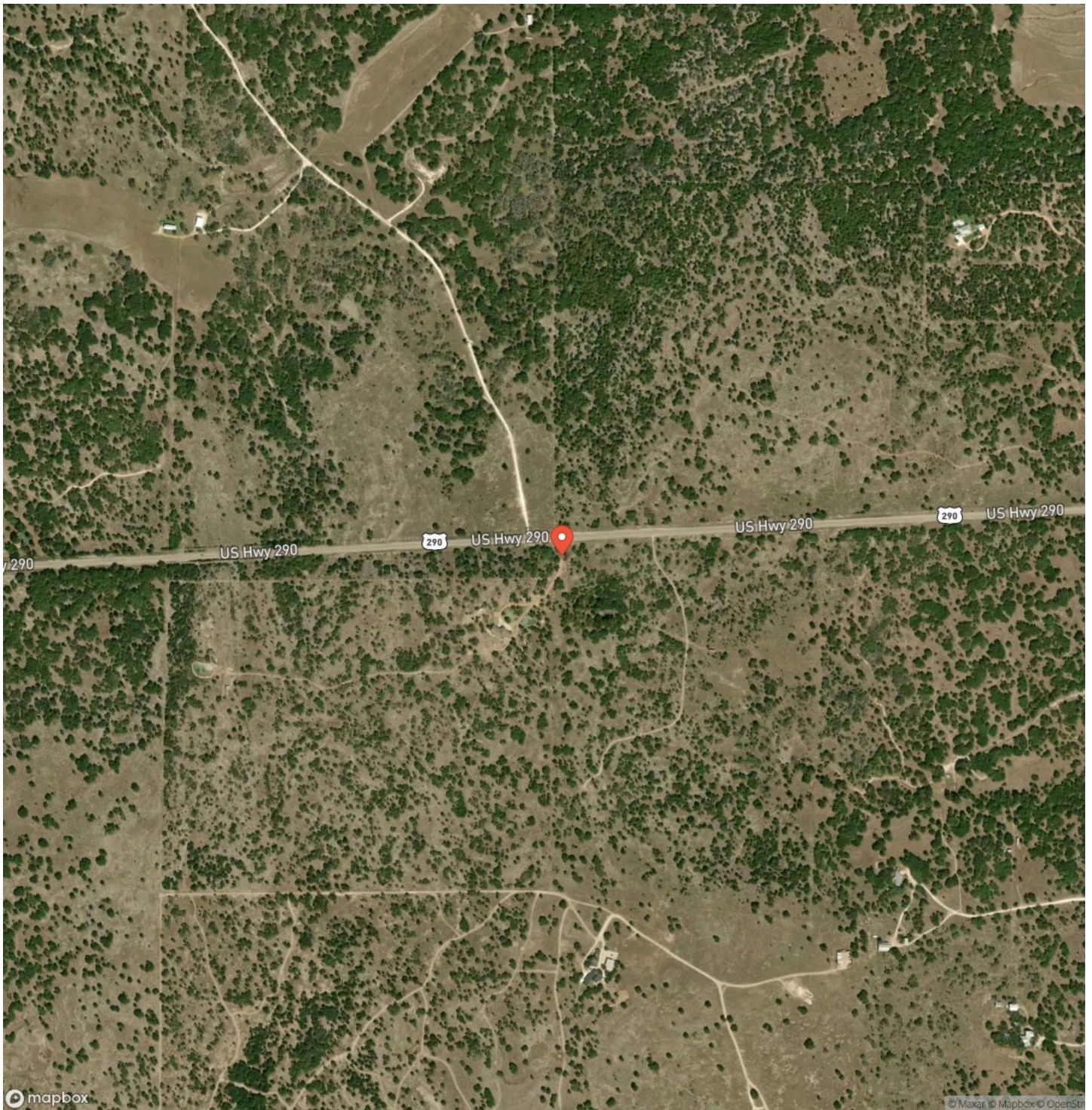
Locator Map



Locator Map



Satellite Map



DISCLAIMERS

All drawings are neither legally recorded maps nor surveys and are not intended to be used as such. The information contained herein has been obtained from sources deemed reliable, but not guaranteed. All dimensions/boundaries are estimated, and buyer has the right to verify prior to submitting an offer. Any legal and/or property information found on this site and/or third-party sites should be verified before relied upon. Buyers are hereby notified that properties are subject to many forces and impacts, natural and unnatural; including, but not limited to weather-related events, environmental issues, disease (e.g. Oak Wilt, Chronic Wasting Disease, or Anthrax), invasive species, illegal trespassing, previous owner actions, actions by neighbors, and/or government actions. Buyers should investigate any concerns to their satisfaction.

Capitol Ranch Real Estate, LLC does not make any representations, warranties or covenants of any kind or character, whether expressed or implied. The property information, videos and photos herein are copyrighted and may not be duplicated in whole or part.

Capitol Ranch Real Estate, LLC
12405 Schwartz Road
Brenham, TX 77833
(855) 968-1200
<https://ranchrealestate.com/>
