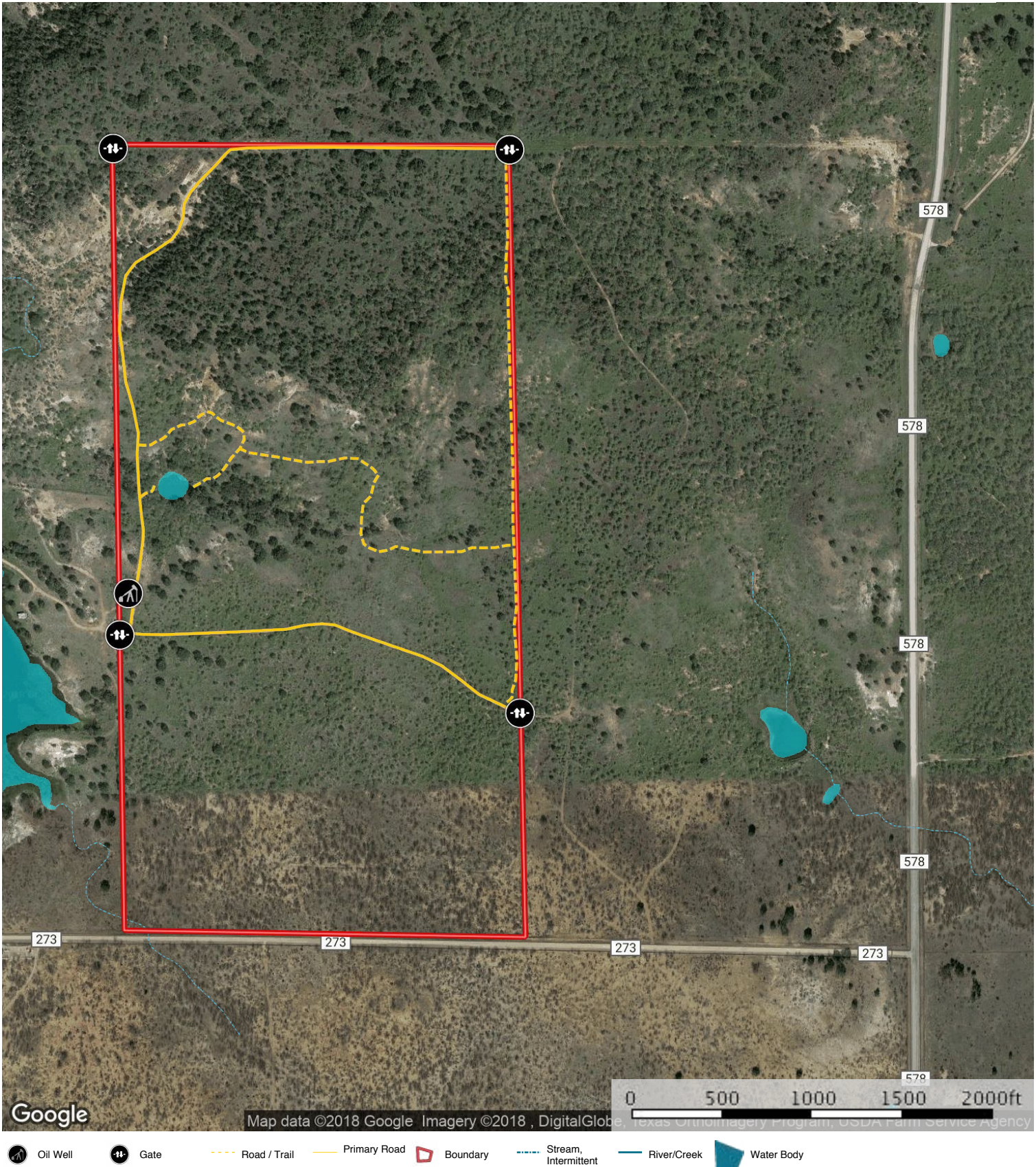


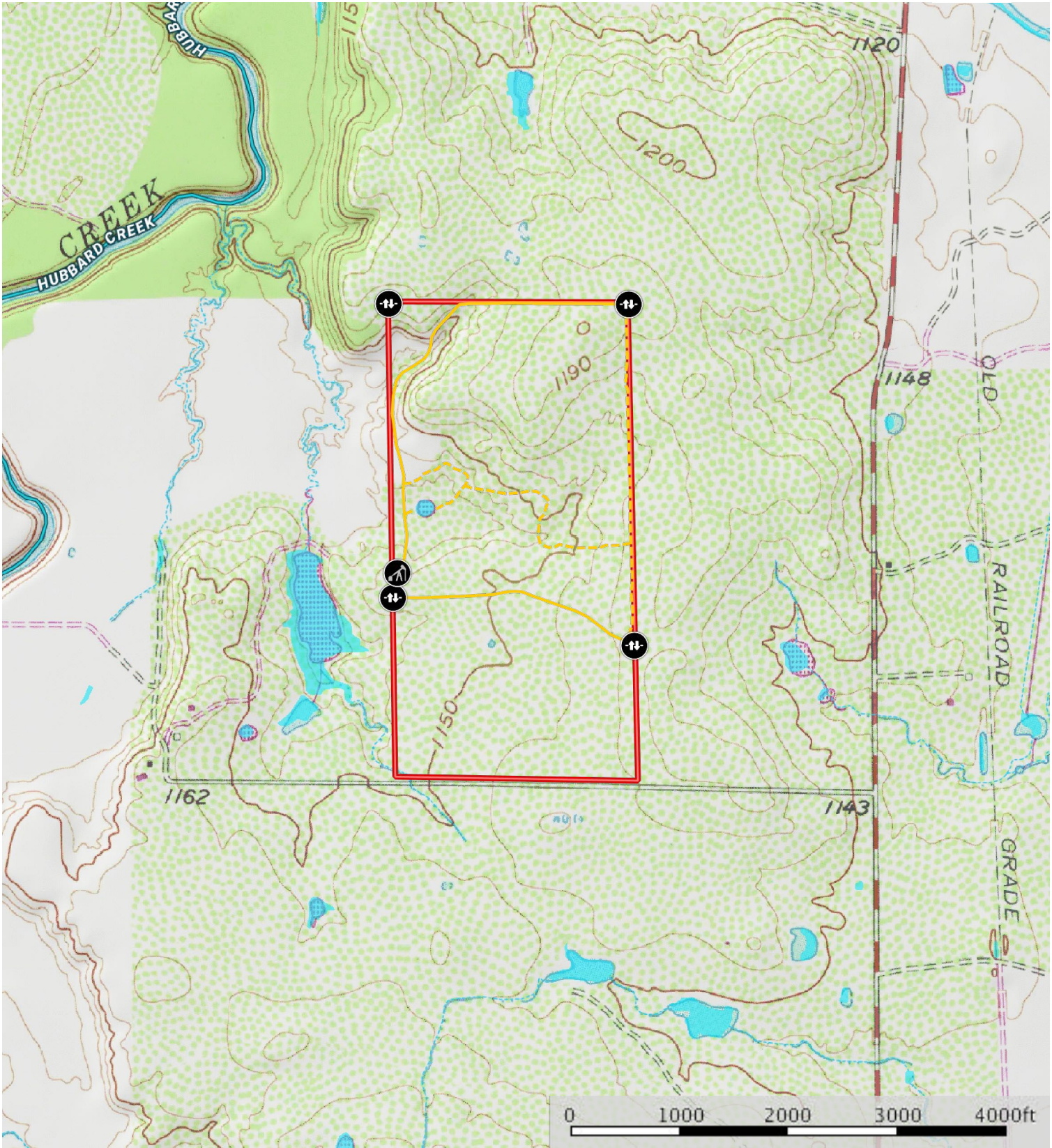
West Broken Tip Ranch  
Stephens County, Texas, 160 AC +/-



Oil Well Gate Road / Trail Primary Road Boundary Stream, Intermittent River/Creek Water Body



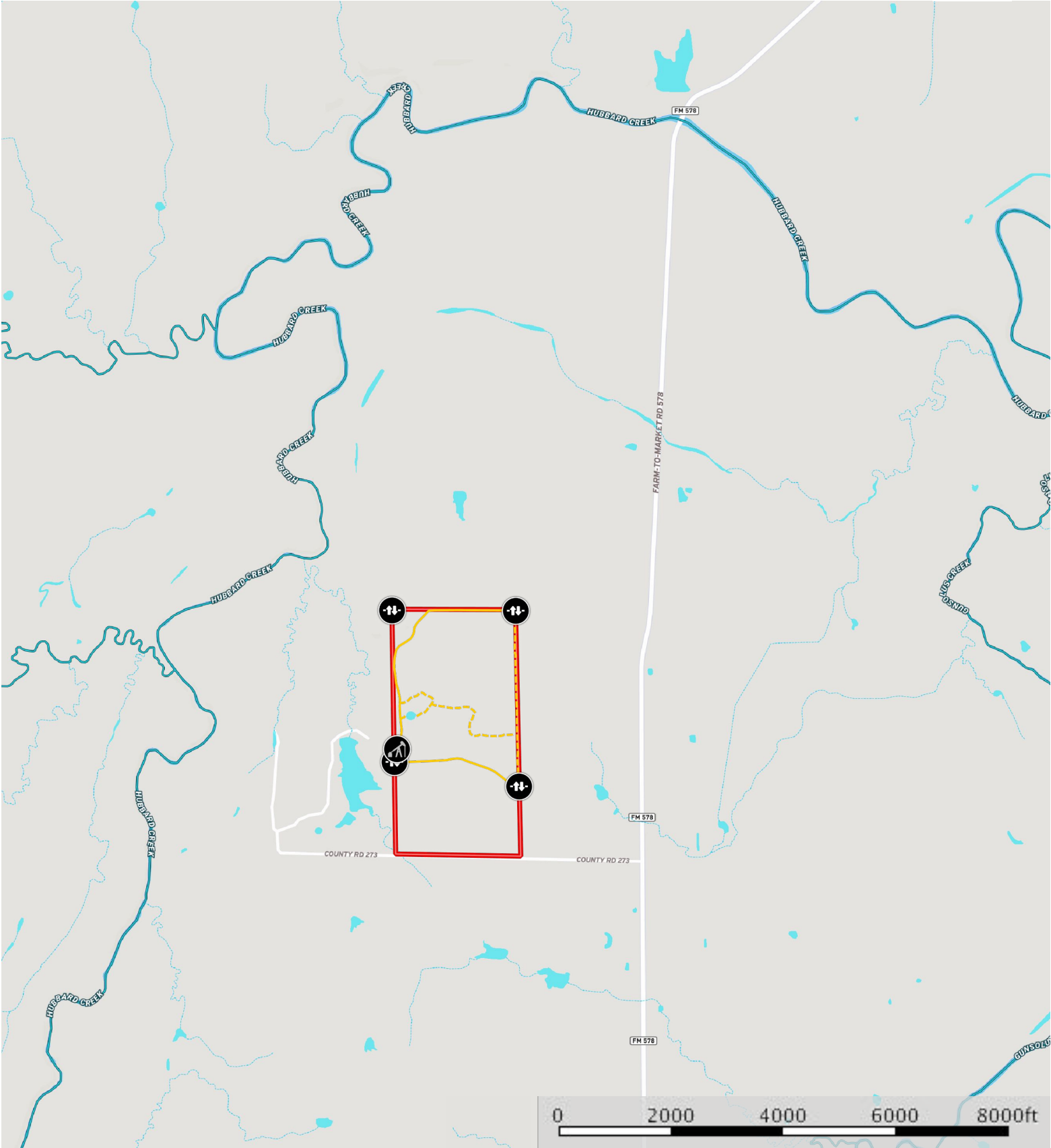
West Broken Tip Ranch  
Stephens County, Texas, 160 AC +/-



- Oil Well
- Gate
- Road / Trail
- Primary Road
- Boundary
- Stream, Intermittent
- River/Creek
- Water Body

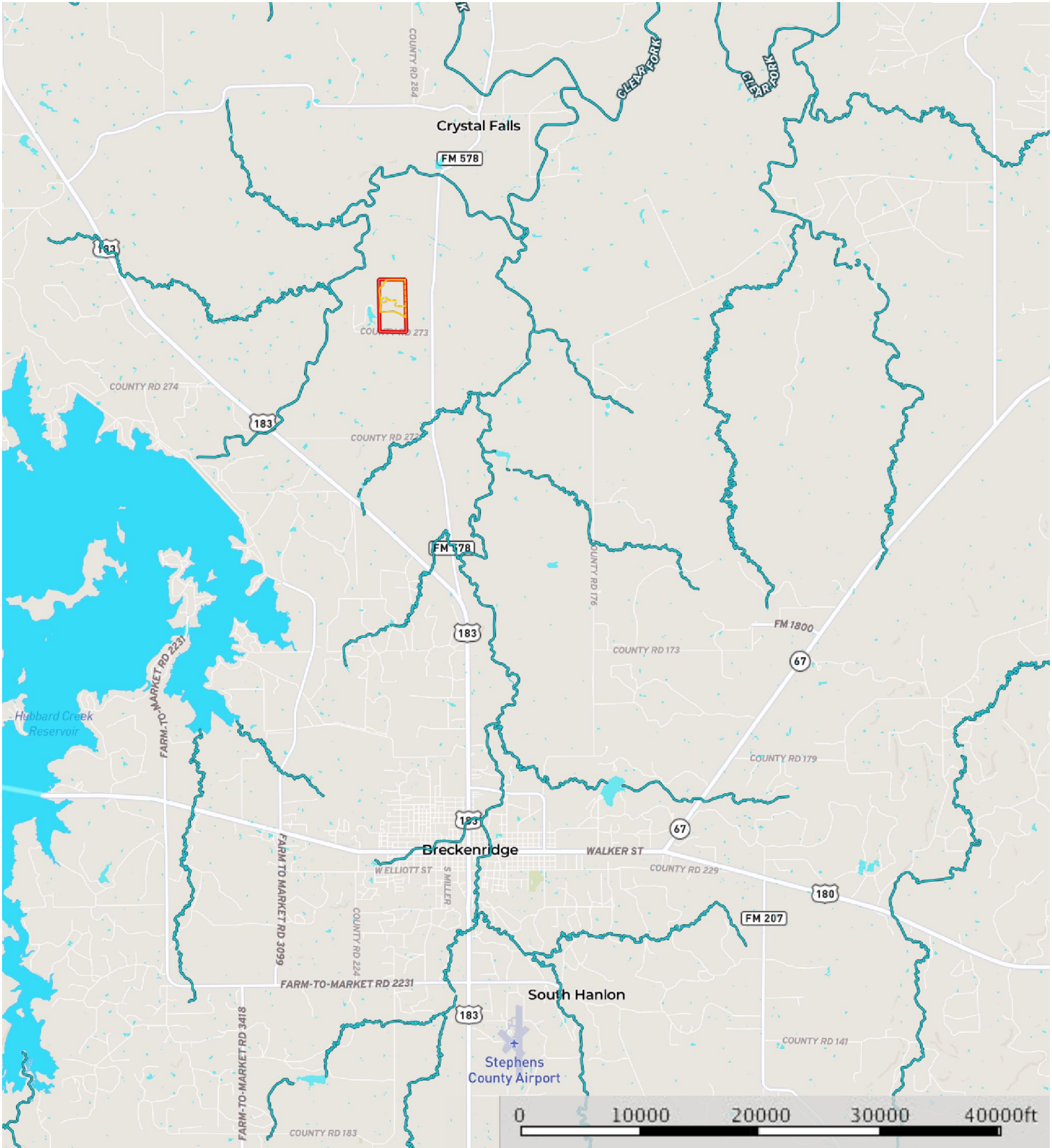


West Broken Tip Ranch  
Stephens County, Texas, 160 AC +/-



- Oil Well
- Gate
- Road / Trail
- Primary Road
- Boundary
- Stream, Intermittent
- River/Creek
- Water Body

West Broken Tip Ranch  
Stephens County, Texas, 160 AC +/-



--- Road / Trail    --- Primary Road    □ Boundary    -.-.- Stream, Intermittent    --- River/Creek    ■ Water Body



Stephens County, Texas, 160 AC +/-

