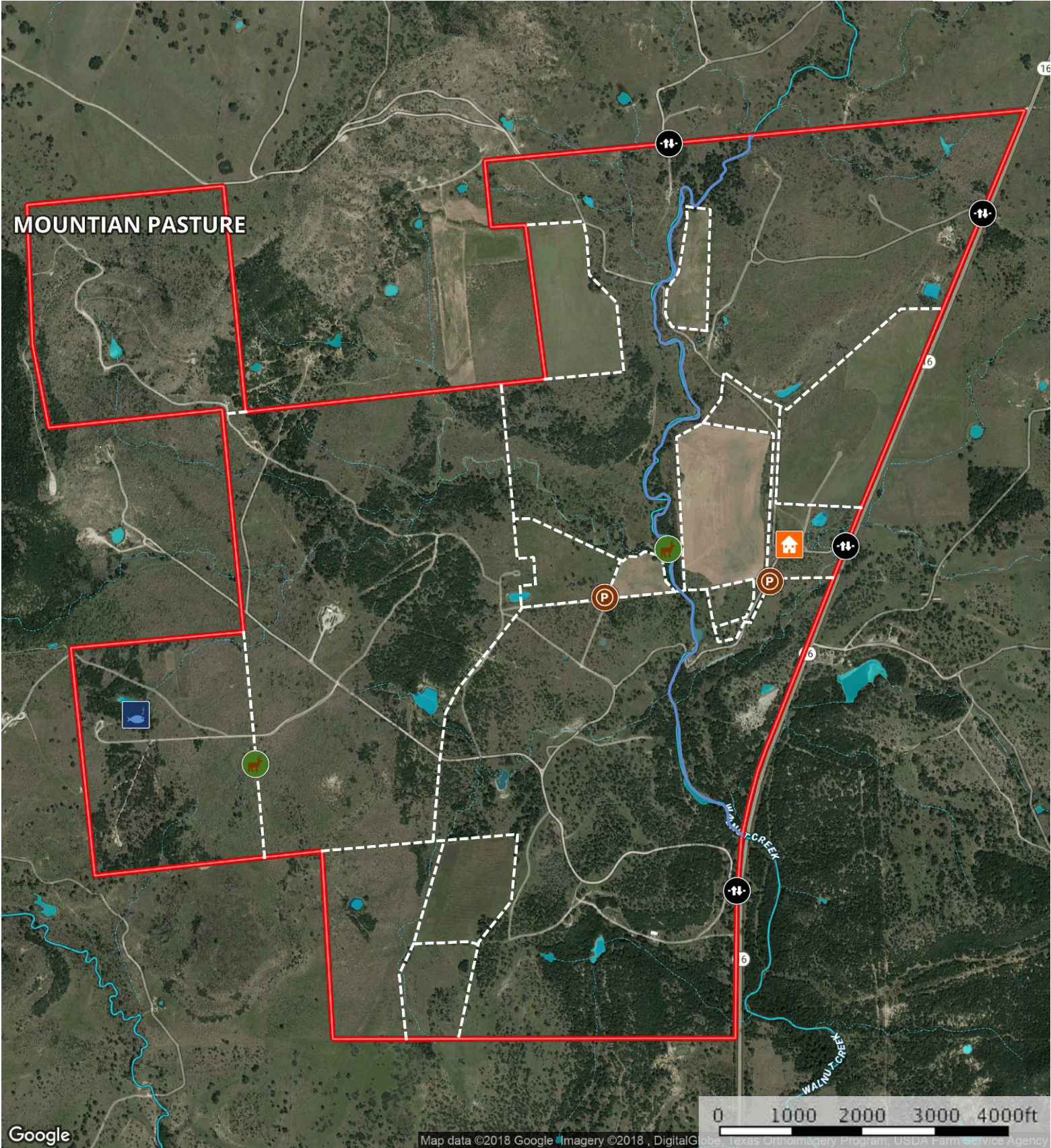


The Stephen Family Ranch
Palo Pinto County, Texas, 1705 AC +/-



Pier

Gate

House

Feeder

Pens

River / Creek

Fence

Boundary

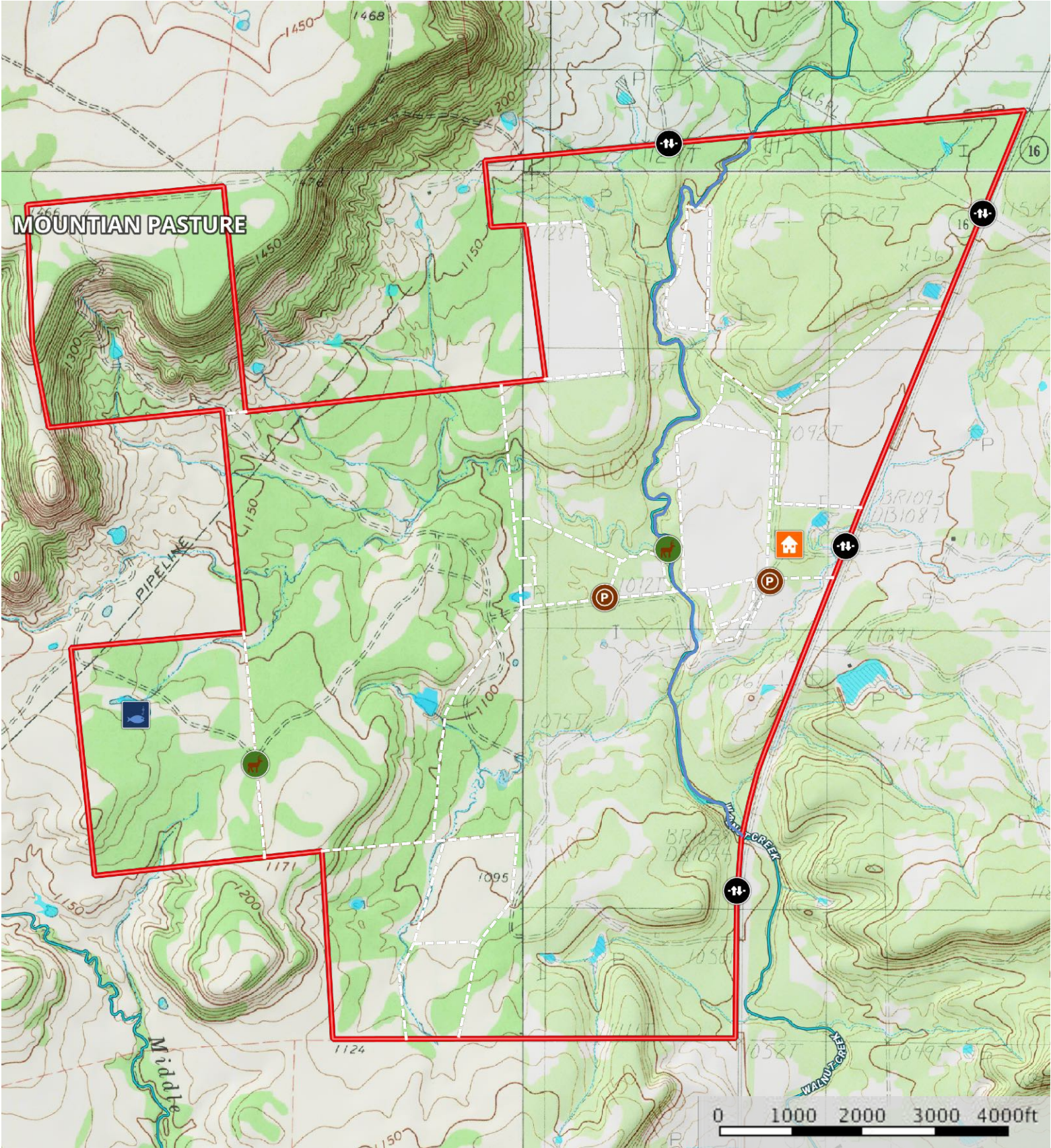
Pond / Tank

Stream, Intermittent

River/Creek

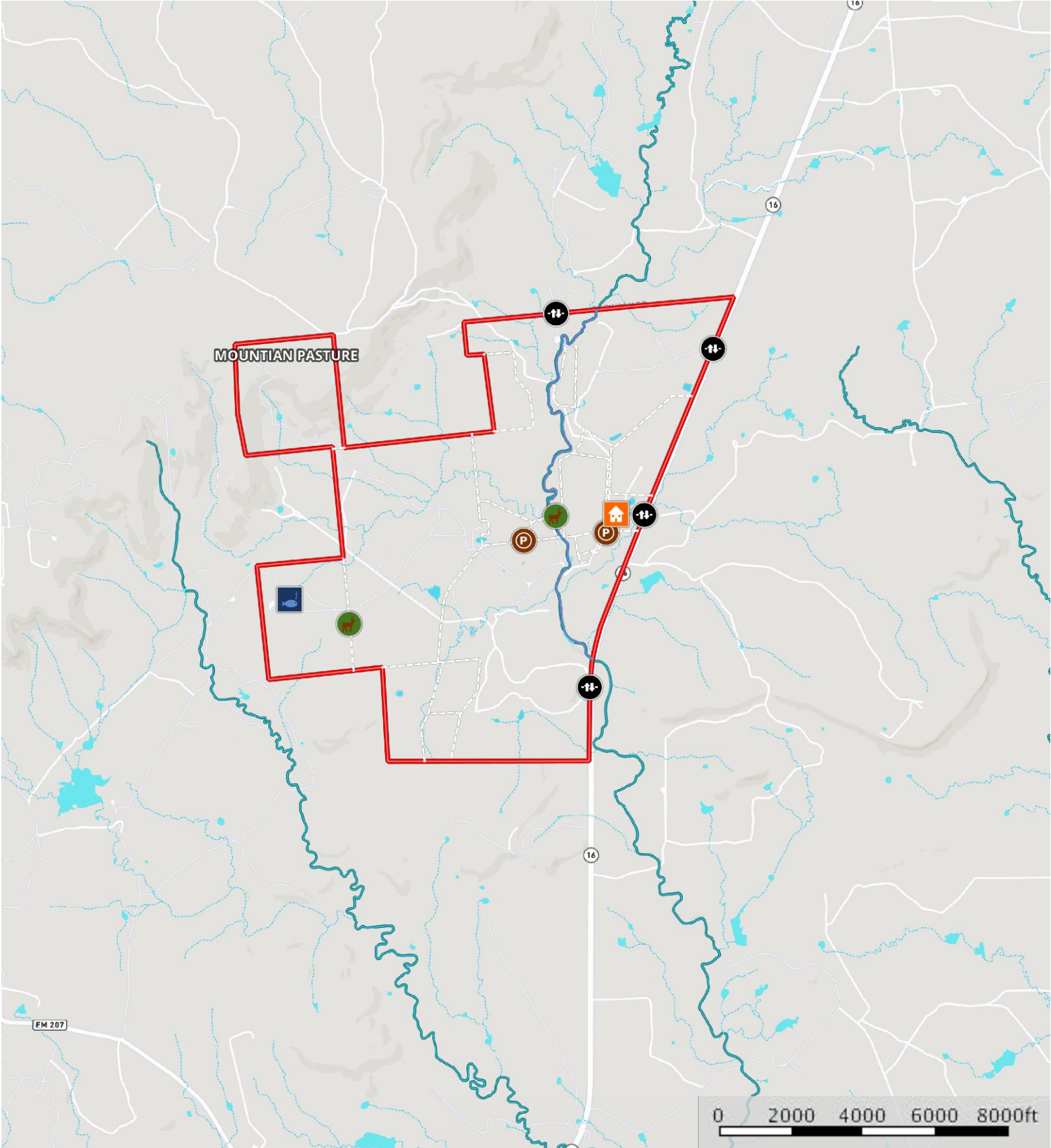
Water Body

The Stephen Family Ranch
Palo Pinto County, Texas, 1705 AC +/-



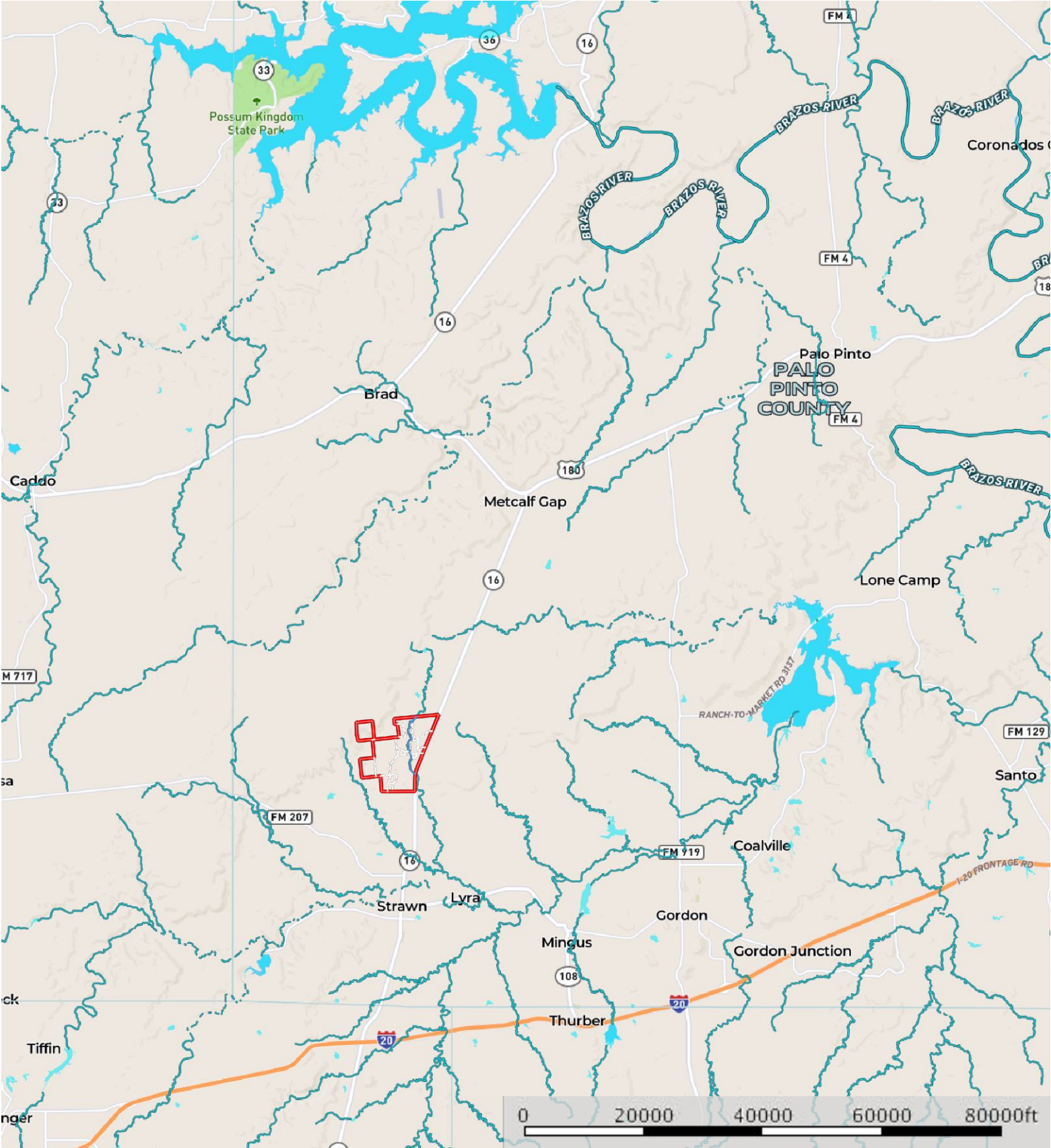
- Pier
- Gate
- House
- Feeder
- Pens
- River / Creek
- Fence
- Boundary
- Pond / Tank
- Stream, Intermittent
- River/Creek
- Water Body

The Stephen Family Ranch
Palo Pinto County, Texas, 1705 AC +/-



- Pier
- Gate
- House
- Feeder
- Pens
- River / Creek
- Fence
- Boundary
- Pond / Tank
- Stream, Intermittent
- River/Creek
- Water Body

The Stephen Family Ranch
Palo Pinto County, Texas, 1705 AC +/-



— River / Creek — Fence □ Boundary ■ Pond / Tank - - - Stream, Intermittent — River/Creek ■ Water Body

The Stephen Family Ranch
Palo Pinto County, Texas, 1705 AC +/-

