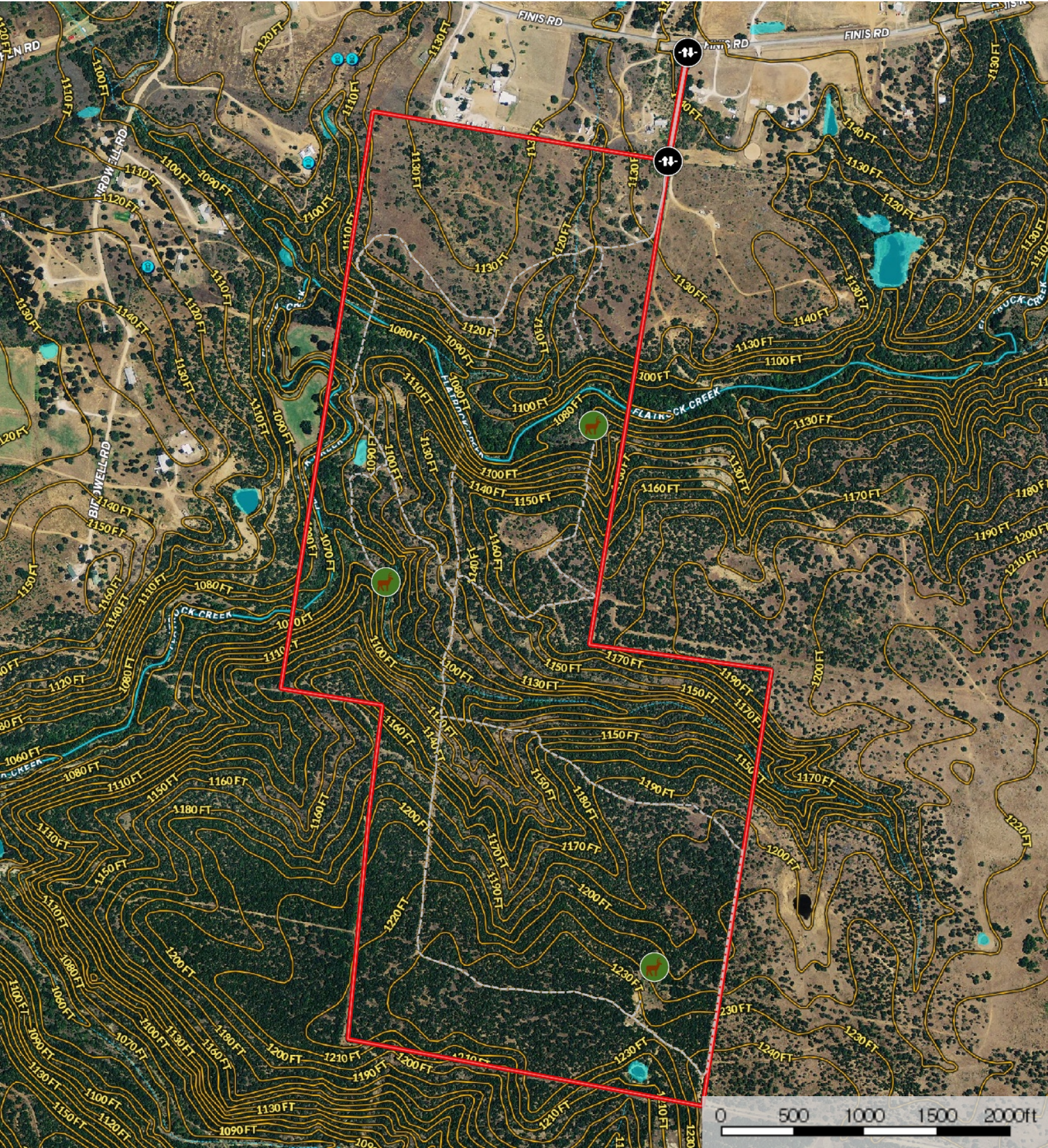
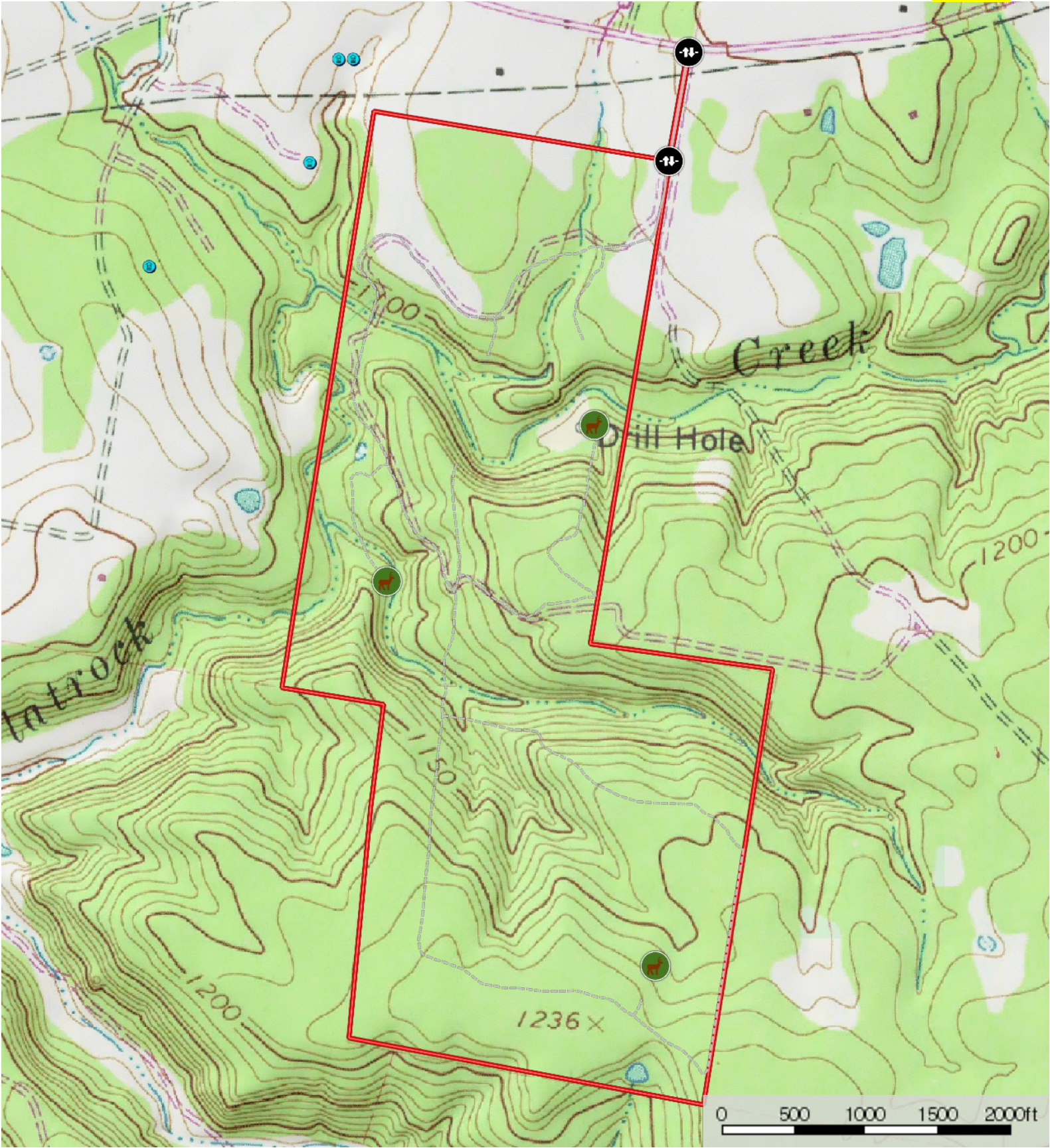


Flatrock Gulch
Young County, Texas, 250 AC +/-



- Feeder
- Gate
- Road / Trail
- Primary Road
- Boundary
- Stream, Intermittent
- River/Creek
- Water Body
- Water Wells

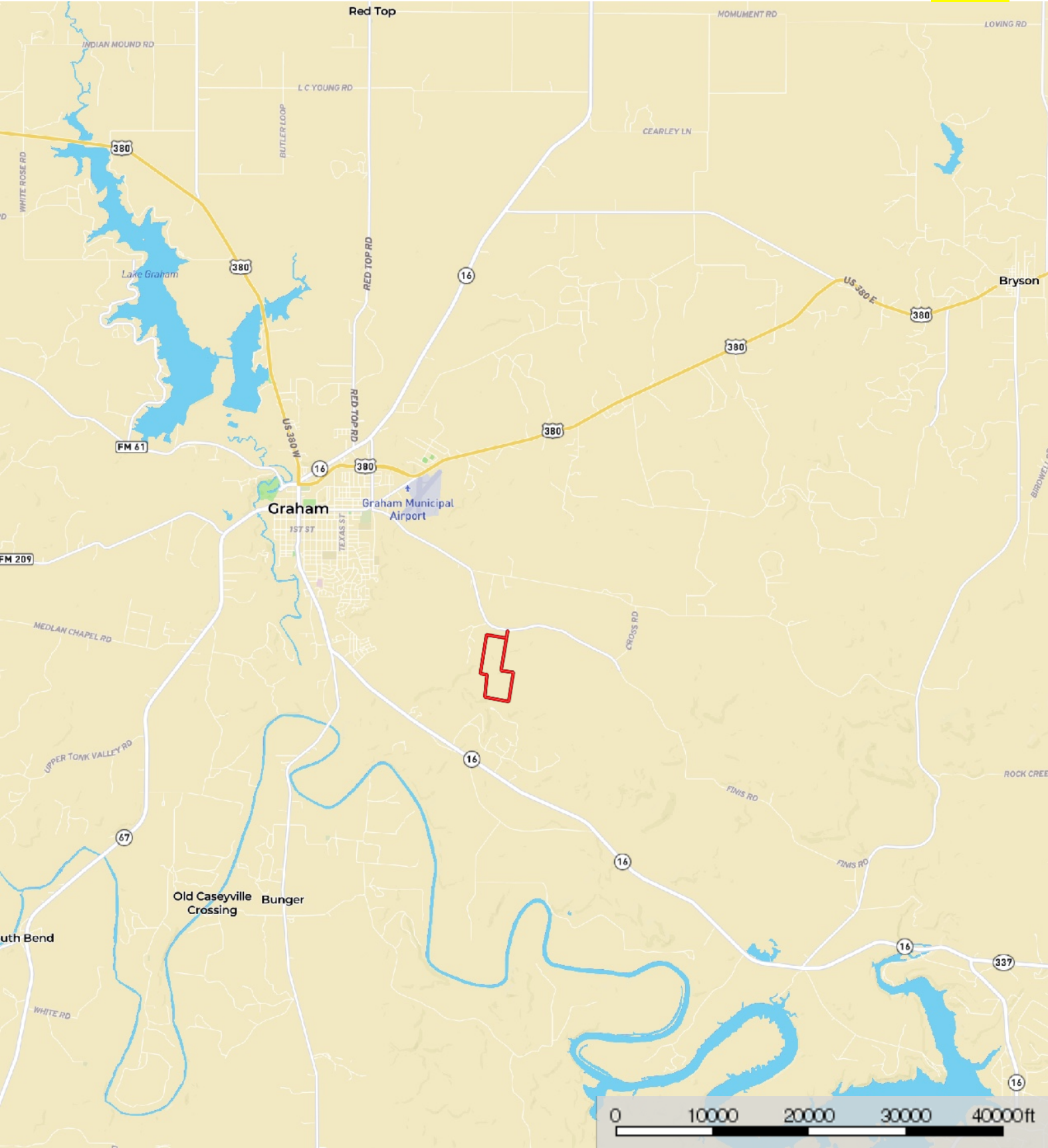
Flatrock Gulch
Young County, Texas, 250 AC +/-




Feeder Gate Road / Trail Primary Road Boundary Water Wells

Flatrock Gulch

Young County, Texas, 250 AC +/-



 Boundary

The map displays the Palo Pinto County Jail, located in the central part of the county. The jail is marked with a red outline and labeled 'Palo Pinto County Jail' in red text. The map includes major roads, water bodies, and surrounding towns. A scale bar at the bottom right indicates distances up to 80,000 feet.



The information contained herein was obtained from sources deemed to be reliable.

MapRight Services makes no warranties or guarantees as to the completeness or accuracy thereof.