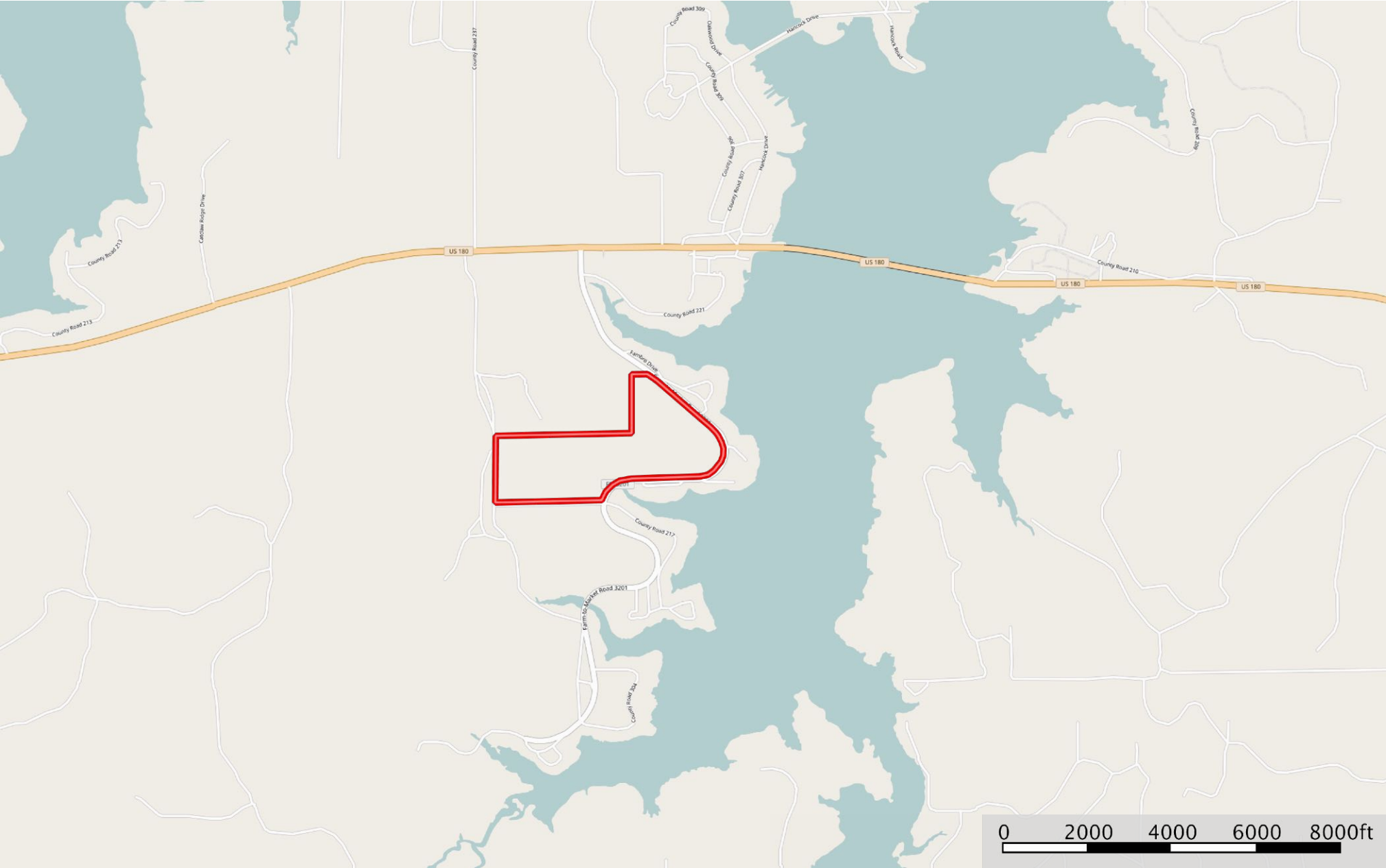



- Gate
- Electricity Meter
- Water Meter
- Road / Trail
- Fence
- Water Line
- Boundary
- Stream, Intermittent
- River/Creek
- Water Body



- Gate
- Electricity Meter
- Water Meter
- Road / Trail
- Fence
- Water Line
- Boundary
- Stream, Intermittent
- River/Creek
- Water Body

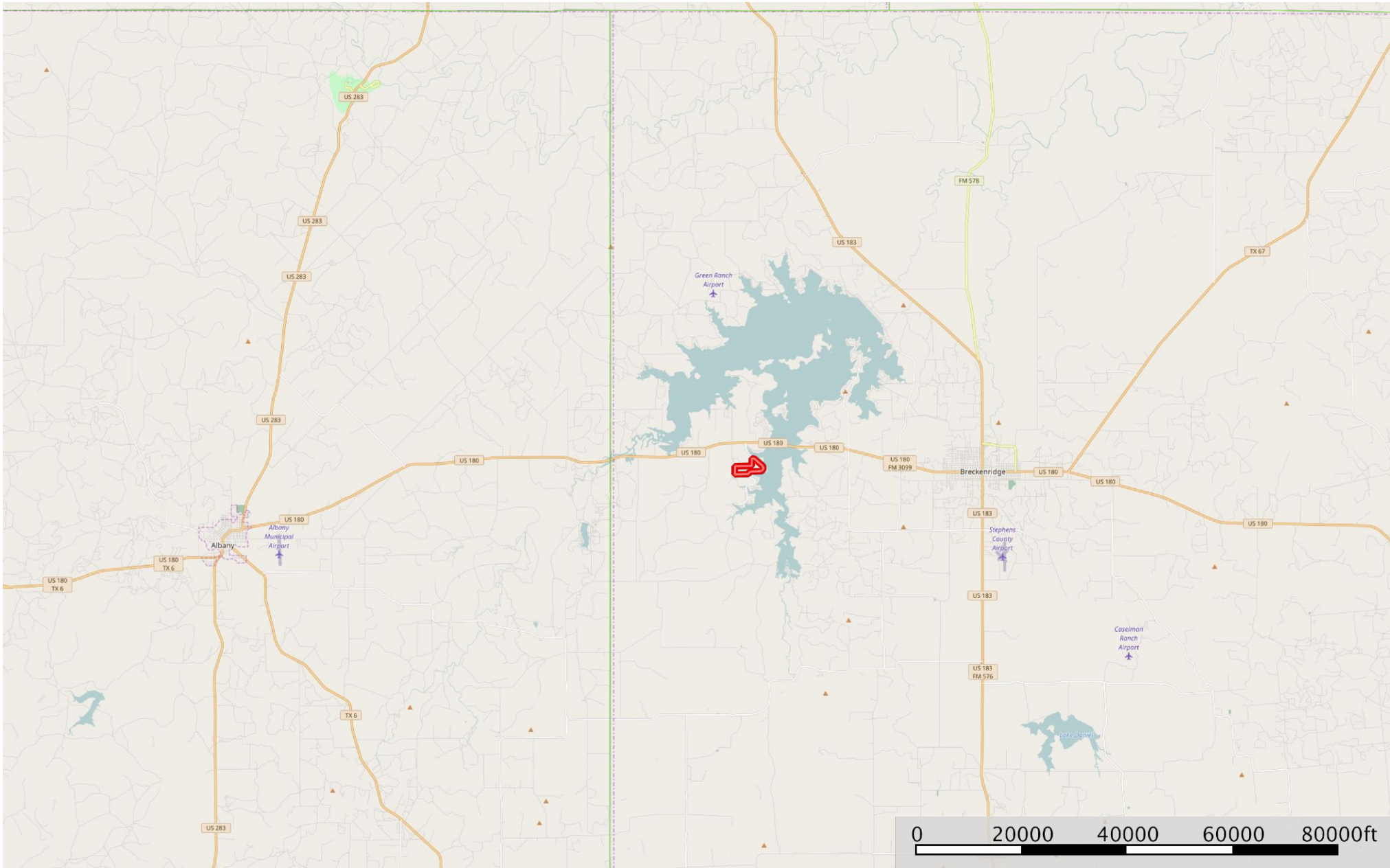
Hubbard Land  
Stephens County, Texas, 140.0 AC +/-



 Boundary

**Hubbard Land**  
Stephens County, Texas, 140.0 AC +/-

**CAMPBELL**  
FARM & RANCH



Boundary

**CAMPBELL FARM & RANCH**

P: 940-549-7700

[www.CFRLand.com](http://www.CFRLand.com)

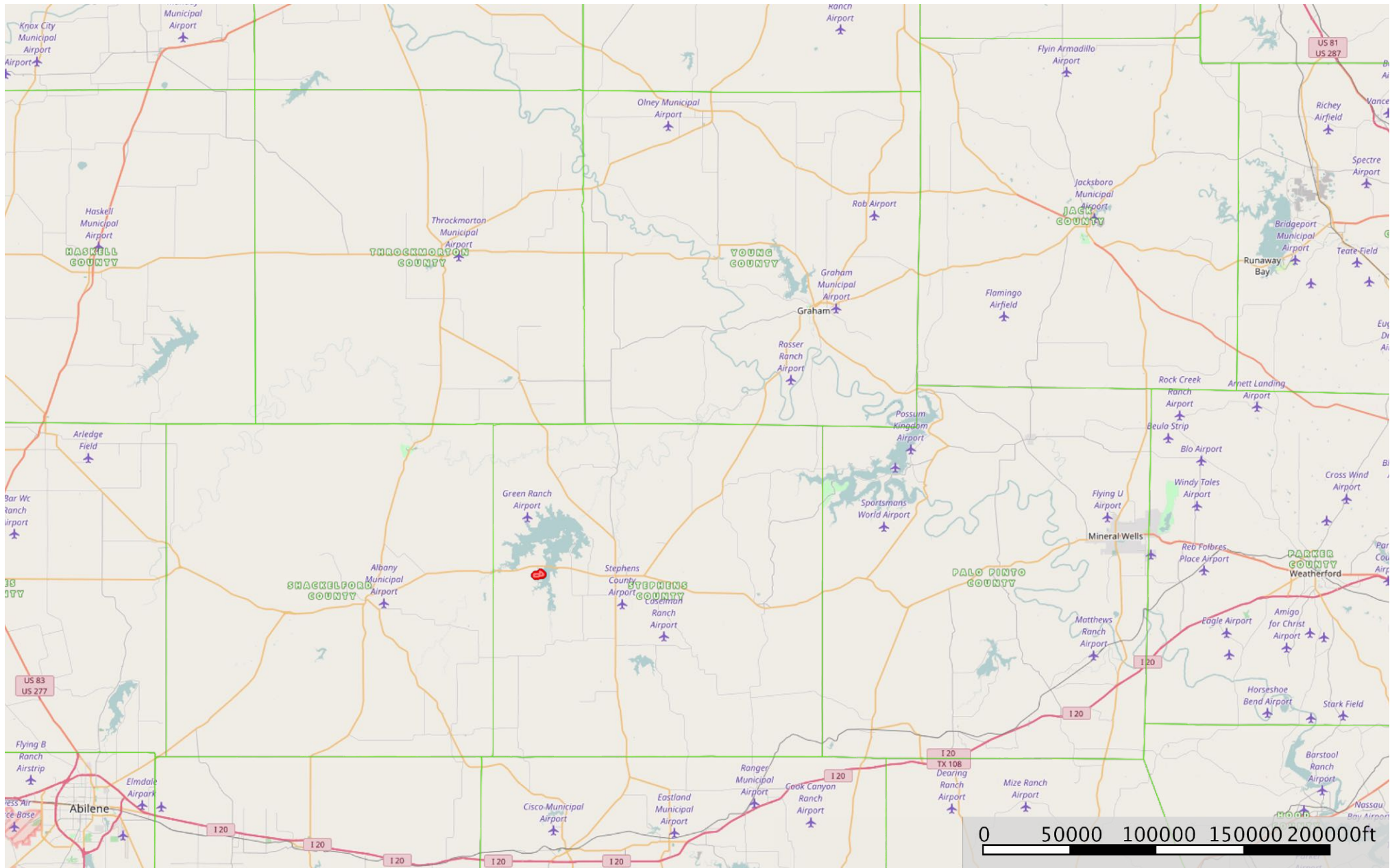
600 4th Street, Graham, TX 76450

The information contained herein was obtained from sources deemed to be reliable. MapRight Services makes no warranties or guarantees as to the completeness or accuracy thereof. 844.932.6277 - mapright.com

# Hubbard Land

Stephens County, Texas, 140.0 AC +/-

**CAMPBELL**  
FARM & RANCH



Boundary

**CAMPBELL FARM & RANCH**

P: 940-549-7700

[www.CFRLand.com](http://www.CFRLand.com)

600 4th Street, Graham, TX 76450

The information contained herein was obtained from sources deemed to be reliable. MapRight Services makes no warranties or guarantees as to the completeness or accuracy thereof. 844.932.6277 - mapright.com