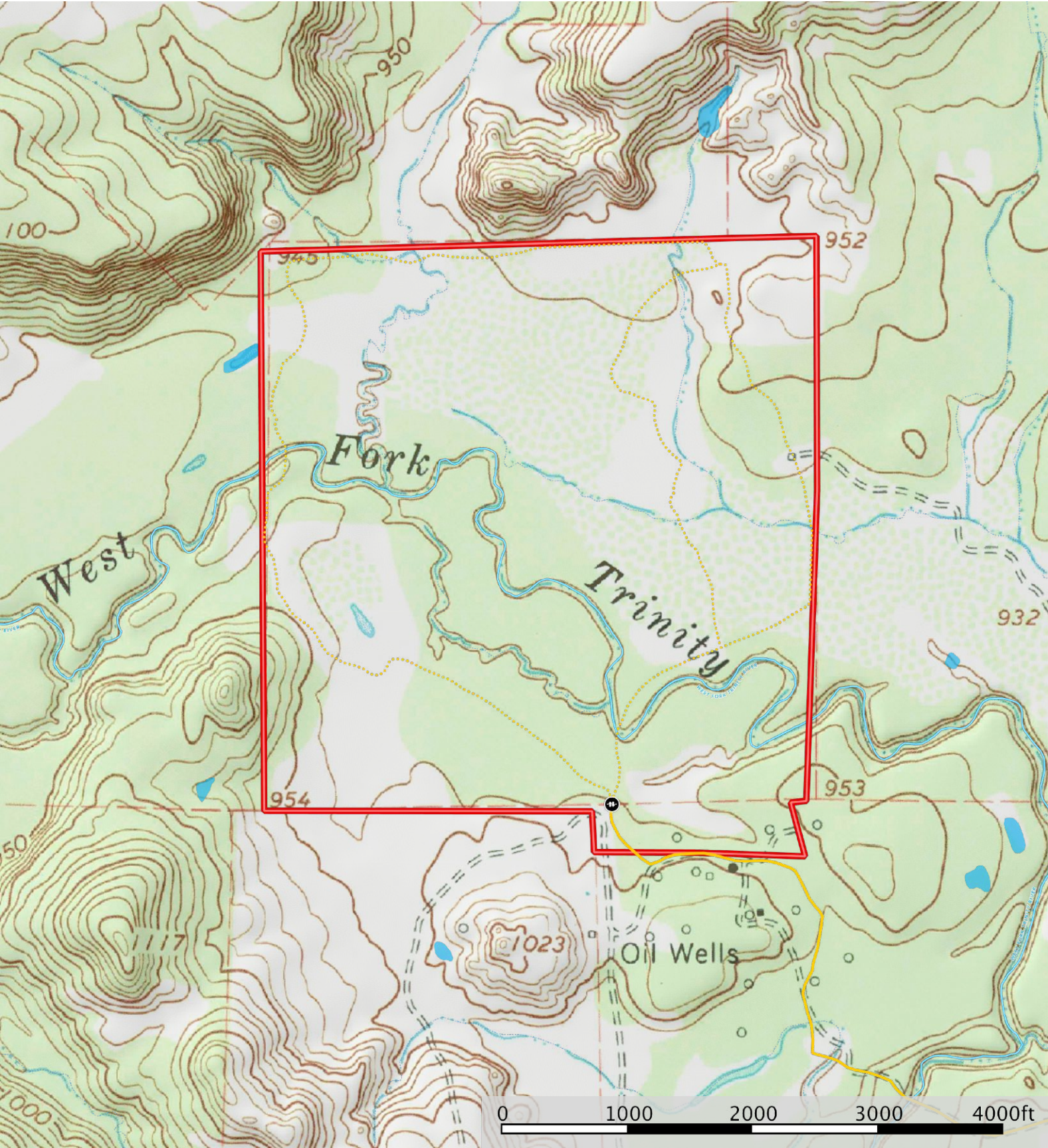


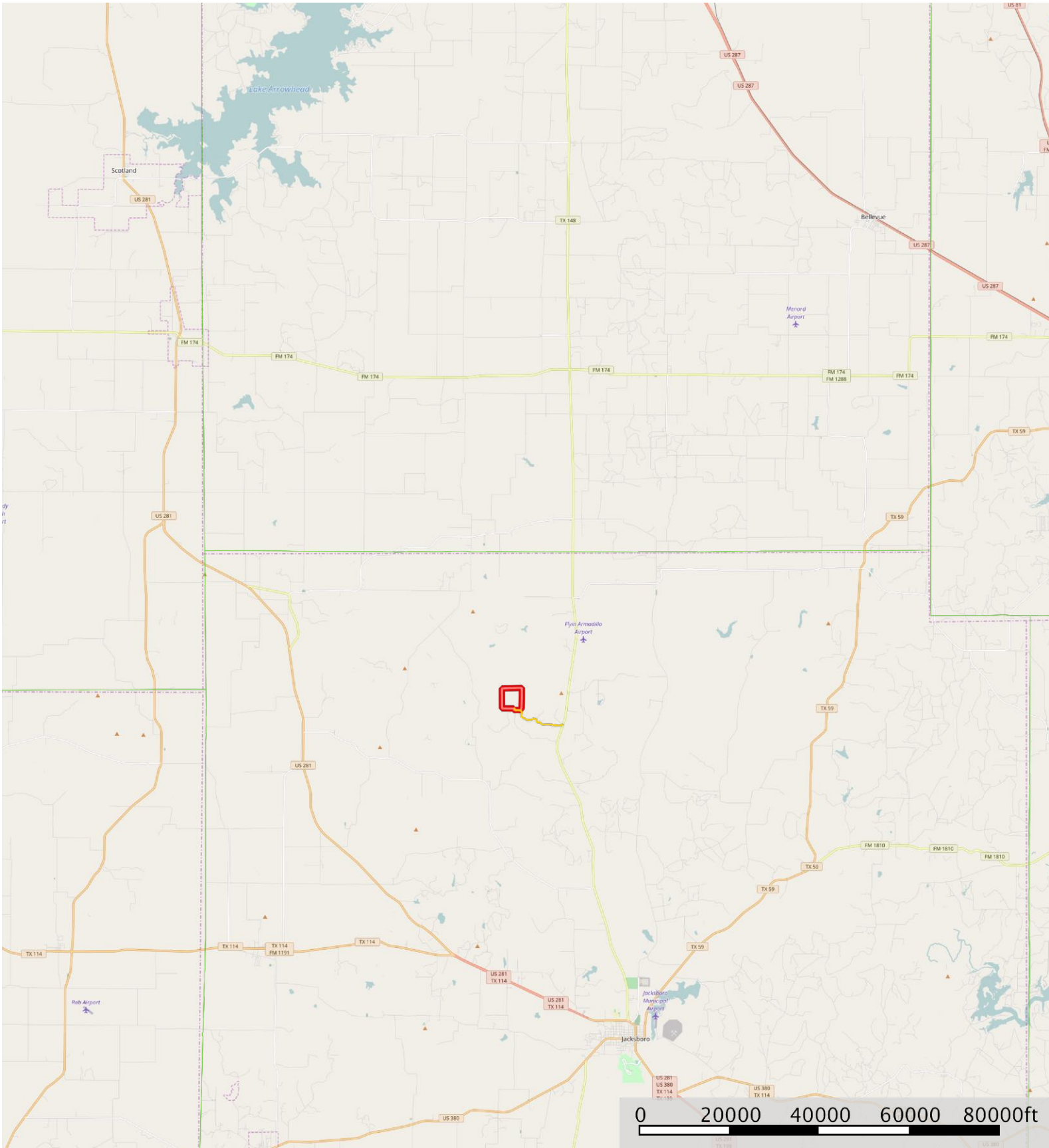
Gate Primary Road Road / Trail Boundary Stream, Intermittent River/Creek Water Body



Gate Primary Road Road / Trail Boundary Stream, Intermittent River/Creek Water Body

Jack County, Texas, 327.0 AC +/-

CAMPBELL
FARM & RANCH

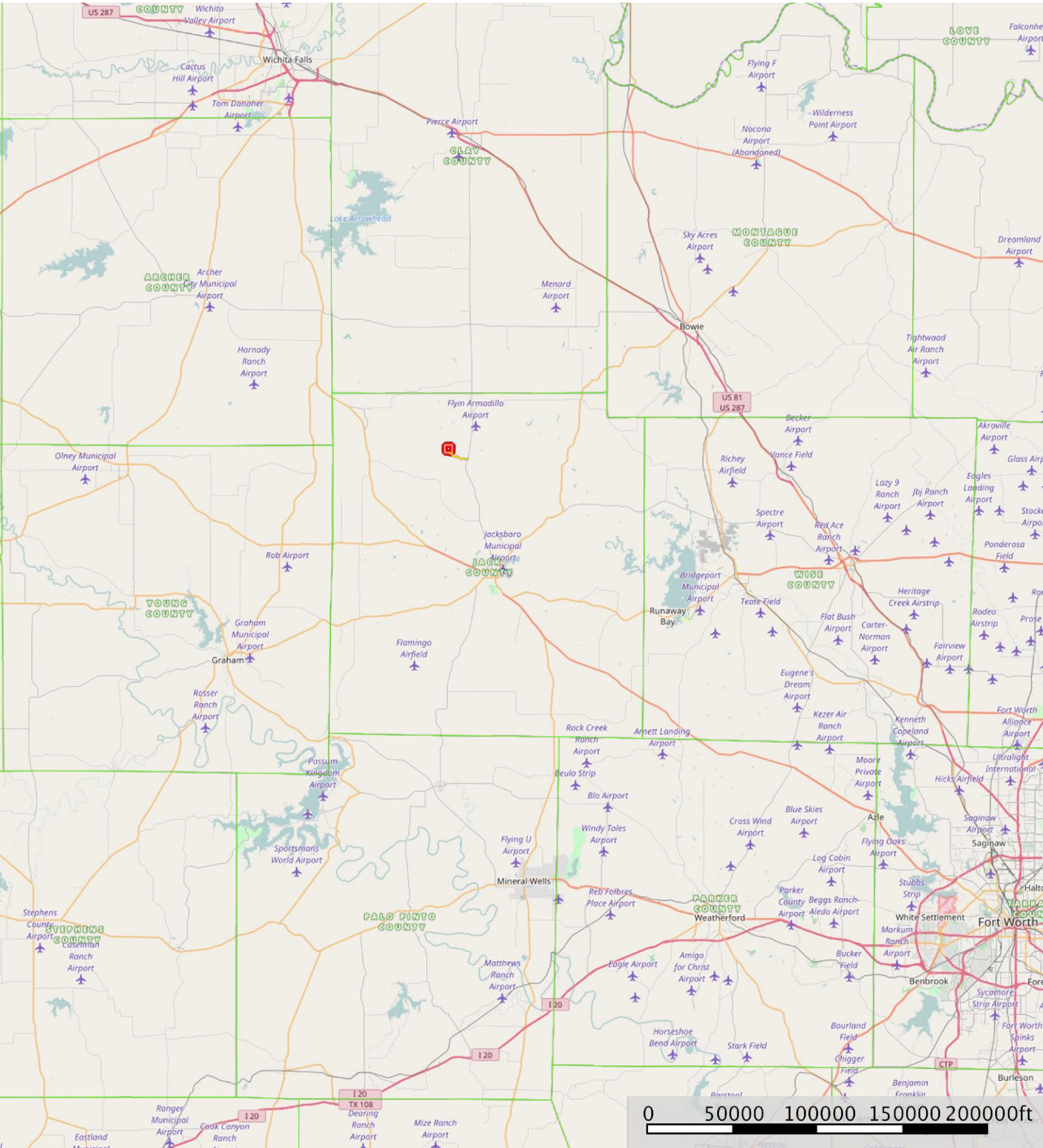


— Primary Road Boundary

West Fork Ranch

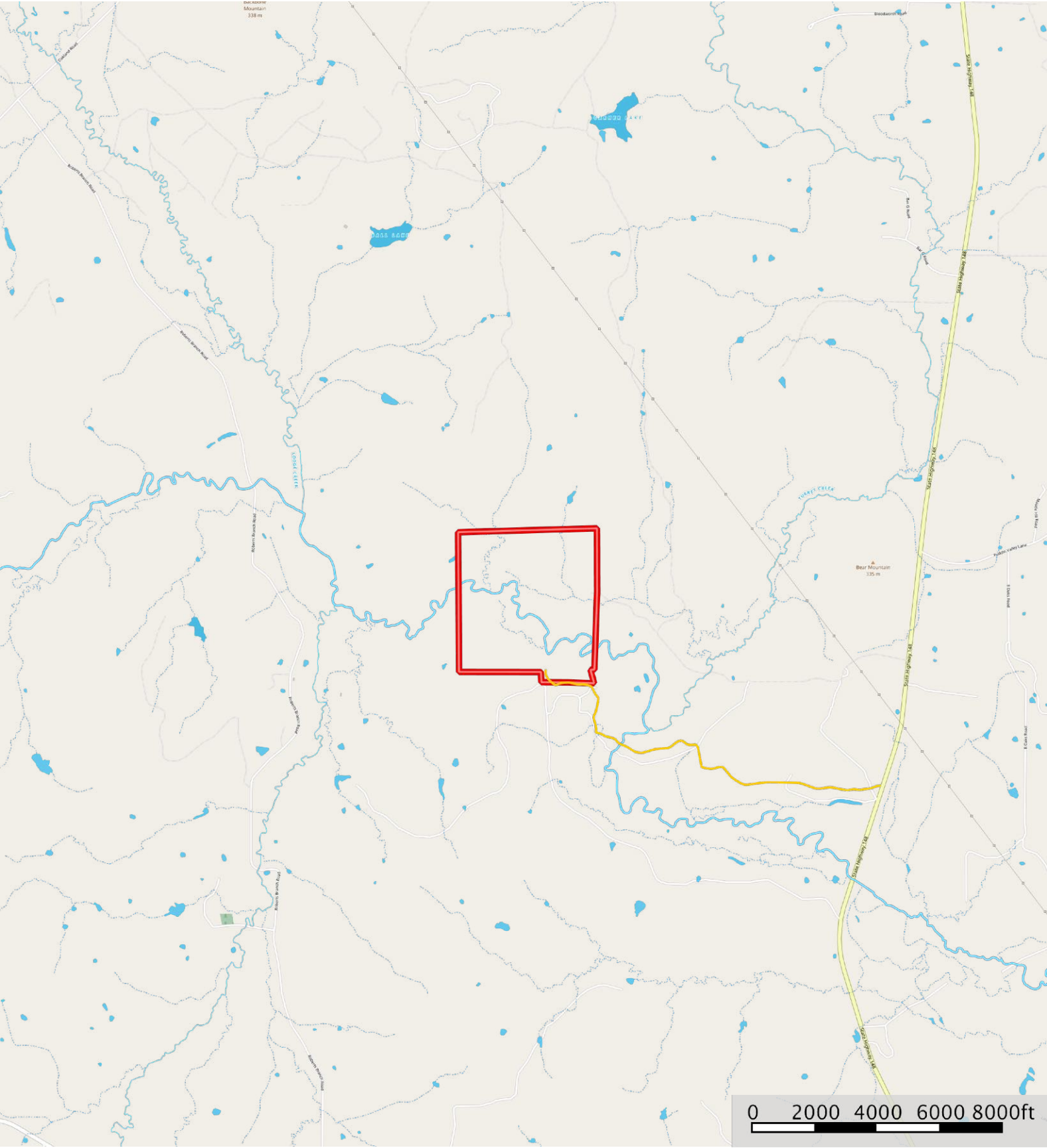
Jack County, Texas, 327.0 AC +/-

CAMPBELL
FARM & RANCH



West Fork Ranch
Jack County, Texas, 327.0 AC +/-

CAMPBELL
FARM & RANCH



- Primary Road
- Boundary
- Stream, Intermittent
- River/Creek
- Water Body