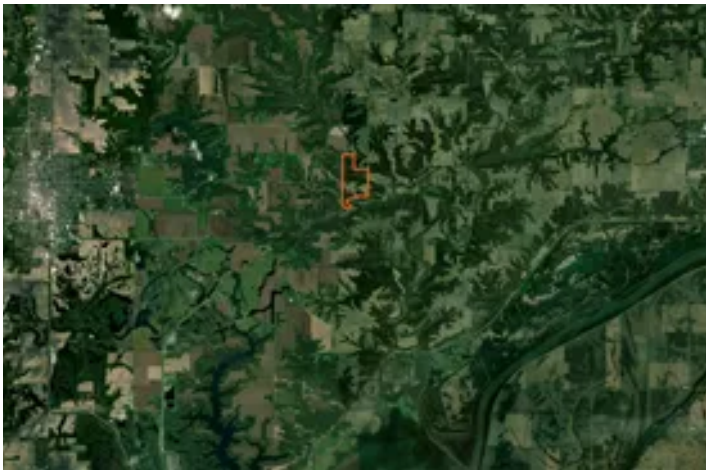


**Fulton County, Illinois 103 Acres of Land For Sale**  
25700 N Orion School Rd  
Canton, IL 61520

**\$705,550**  
103± Acres  
Fulton County



**Fulton County, Illinois 103 Acres of Land For Sale**  
**Canton, IL / Fulton County**

---

**SUMMARY**

**Address**

25700 N Orion School Rd

**City, State Zip**

Canton, IL 61520

**County**

Fulton County

**Type**

Recreational Land, Farms, Hunting Land

**Latitude / Longitude**

40.560778 / -89.92626

**Acreage**

103

**Price**

\$705,550

**Property Website**

<https://landguys.com/property/fulton-county-illinois-103-acres-of-land-for-sale-fulton-illinois/77129/>



## Fulton County, Illinois 103 Acres of Land For Sale Canton, IL / Fulton County

---

### **PROPERTY DESCRIPTION**

**(PRICE REDUCED)**-This acreage is just over the Peoria County line in Fulton County that offers tremendous hunting opportunities! The build site is on a wooded point overlooking the creek with amazing views and electricity is ran all the way back to the site! The creek bottom is wide and is perfect for a large food plot which naturally funnels deer during the rut!

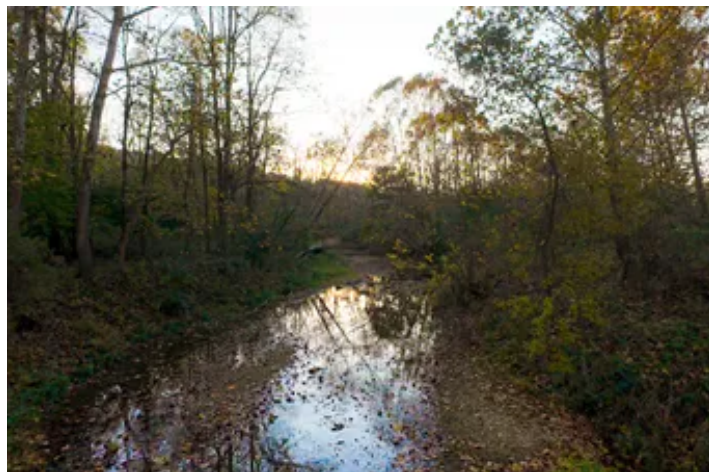
\*This Property is Co-Listed With Brad Belser of Jim Maloof Realty\*

### **KEY FEATURES**

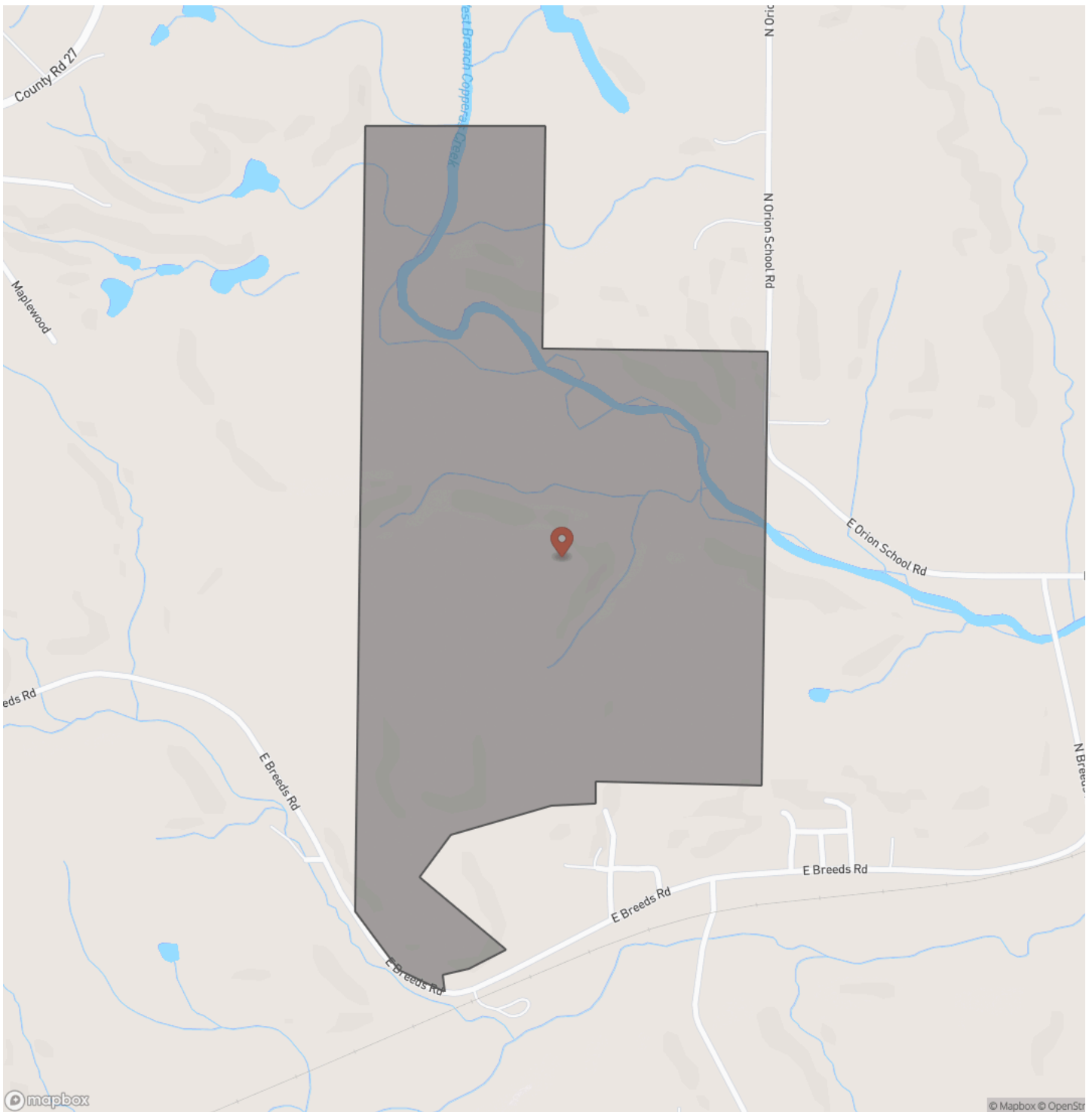
- Just over Peoria County line
- Beautiful rock bottom creek flowing through
- Amazing cabin site over looking creek
- Electricity is brought into acreage to home-site
- Materials on site for large outbuilding
- Perfect areas for large food plot(s)
- Diverse topography
- Loaded with trophy deer and turkeys

**Fulton County, Illinois 103 Acres of Land For Sale  
Canton, IL / Fulton County**

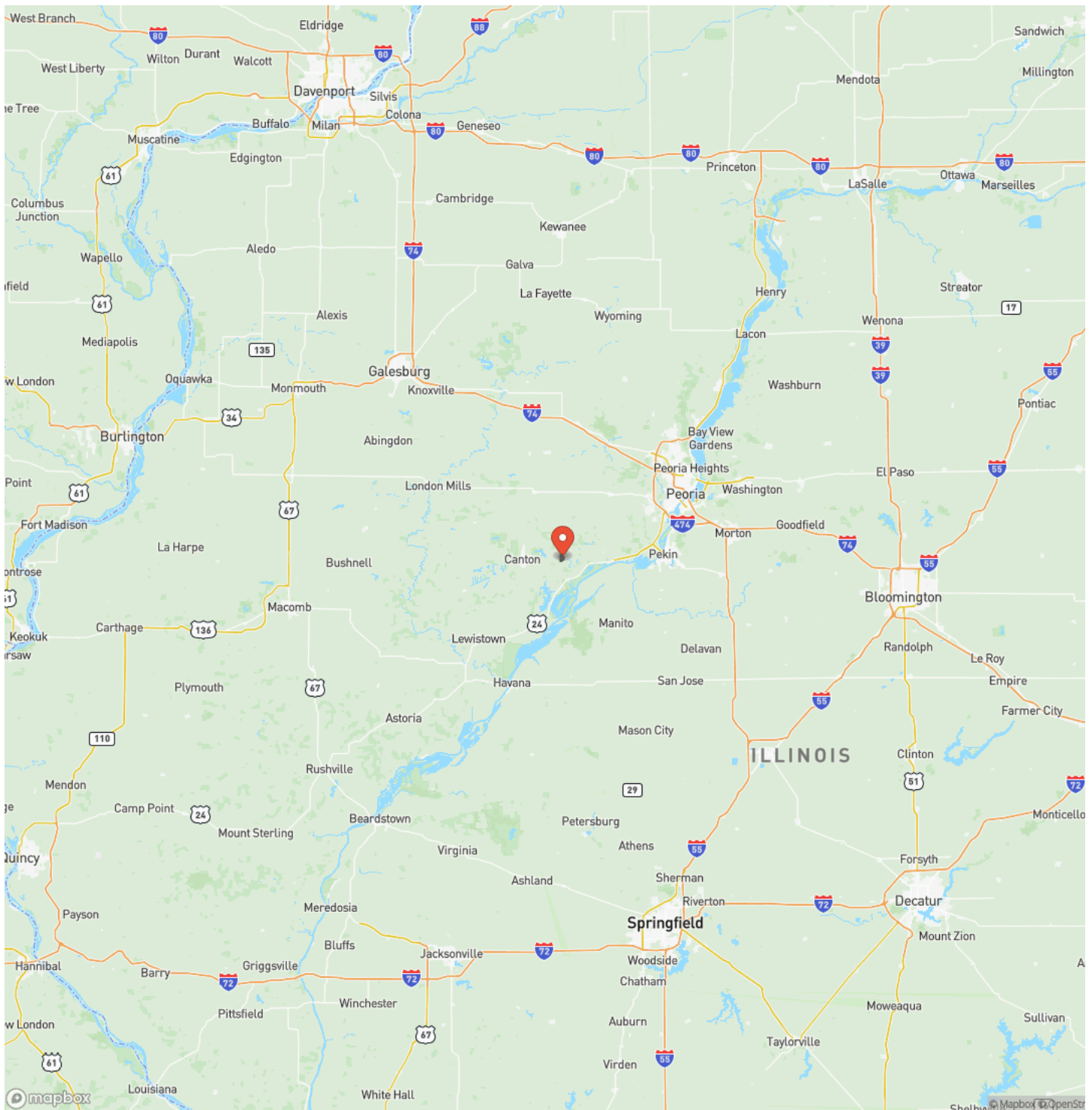
---



## Locator Map



## Locator Map



**MORE INFO ONLINE:**

[www.landguys.com](http://www.landguys.com)

## Satellite Map



# Fulton County, Illinois 103 Acres of Land For Sale

## Canton, IL / Fulton County

---

### LISTING REPRESENTATIVE

For more information contact:

**Representative**  
Matt Cox

**Mobile**  
(309) 221-1764

**Email**  
matt@landguys.com

**Address**

**City / State / Zip**  
Astoria, IL 61501



---

### NOTES

---

---

---

---

---

---

---

---

---

---

---

---

---

---

---

---

---

---

---

---

---

---

---

---

**MORE INFO ONLINE:**

[www.landguys.com](http://www.landguys.com)



**NOTES**

---

---

---

---

---

---

---

---

---

---

---

---

---

---

---

---

---

---

---

---

---

---

---

---

---

---

---

---

---

---

## **DISCLAIMERS**

Information in this brochure is provided solely for information purposes and does not constitute an offer to sell or advertise real estate outside the states in which broker or agent licensed. The information presented has been obtained from sources deemed to be reliable, but is not guaranteed or warranted by the agent, broker, or the sellers of these properties. This offering is subject to errors, omissions, prior sale, price change, correction or withdrawal from the market without notice. All references to age, square footage, income, expenses, acreage, carrying capacity, and land classification, etc. are approximate. Prospective buyers are chargeable with and expected to conduct their own independent investigation of the information and the property and to rely only on those results. Sellers reserve the right to accept or reject any and all offers without liability to any buyer or cooperating broker.

Maps are provided for illustration purposes only, the accuracy is not warranted. Parcels on interactive maps are not adjusted to match aerial backgrounds. This information is for reference purposes only and is not a legal document. Data maps contain errors. The seller and seller's agent are making known to all potential buyers that there may be variations between the location of the existing fence lines and the legal description of the deeded property. Seller and seller's agent make no warranties with regard to the location of the fence lines in relationship to the deeded property lines, nor does the Seller make any warranties or representations with regard to the specific acreage contained within the fenced property lines. Seller is selling the property in an "as is" condition, which includes the location of the fences as they exist. Boundaries shown on the accompanying maps are approximate, based on county parcel data. The maps are not to scale. The accuracy of the maps is not guaranteed. Prospective buyers are encouraged to verify fence lines, deeded property lines and acreages using a licensed surveyor at their own expense.

---

**LandGuys**  
4331 Conestoga Dr  
Springfield, IL 62711  
(217) 899-1240  
[www.landguys.com](http://www.landguys.com)

---