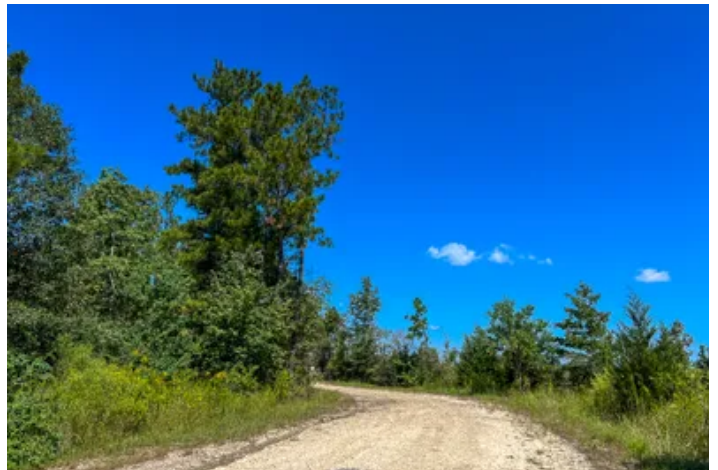


47 Acres | T-1 | Highway 287  
Highway 287  
Woodville, TX 75979

**\$329,000**  
47± Acres  
Tyler County



**MORE INFO ONLINE:**  
[www.homelandprop.com](http://www.homelandprop.com)



**47 Acres | T-1 | Highway 287**  
**Woodville, TX / Tyler County**

---

**SUMMARY**

**Address**

Highway 287

**City, State Zip**

Woodville, TX 75979

**County**

Tyler County

**Type**

Undeveloped Land, Hunting Land, Recreational Land

**Latitude / Longitude**

30.8424617969 / -94.5085355652

**Acreage**

47

**Price**

\$329,000

**Property Website**

<https://homelandprop.com/property/47-acres-t-1-highway-287-tyler-texas/74368/>



**MORE INFO ONLINE:**

[www.homelandprop.com](http://www.homelandprop.com)

47 Acres | T-1 | Highway 287  
Woodville, TX / Tyler County

---

**PROPERTY DESCRIPTION**

---

**ACCESS ! FRONTAGE !** Raw and ready ! Native regrowth ready for reforestation site prep, pasture conversion, or natural sustainable forest. Gently rolling topography in sandy type soils with large pine and hardwoods in creek drains. Beautiful homesite, farm, ranch, and/or recreation potential. Great location ! Electricity along SH 287 and south side on T-3. Tyler County rural setting with a mix of timber and pasture properties. High and dry !

---

**Utilities:** Electricity available

**School District:** Woodville ISD



**MORE INFO ONLINE:**

[www.homelandprop.com](http://www.homelandprop.com)

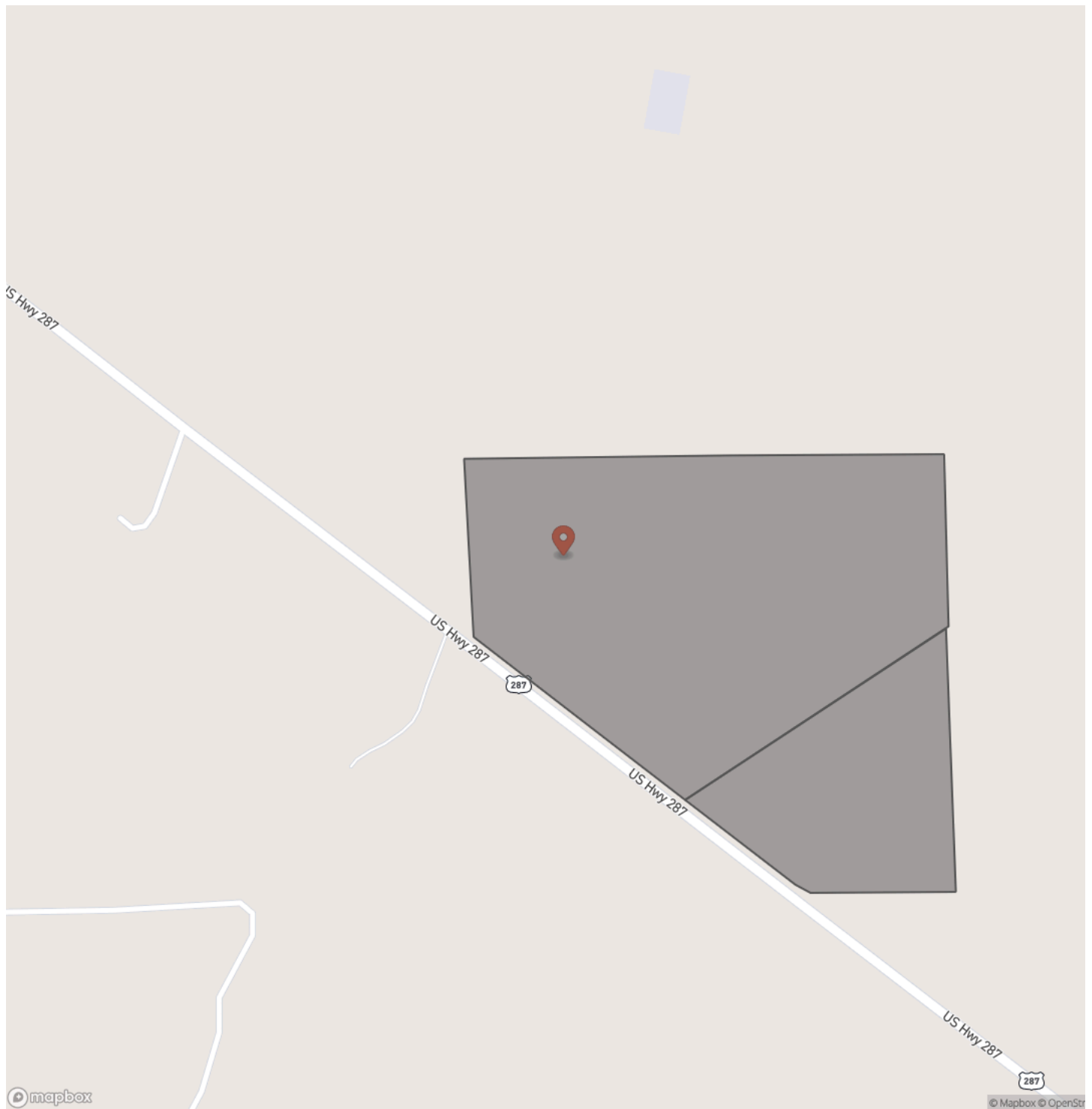
47 Acres | T-1 | Highway 287  
Woodville, TX / Tyler County

---



**MORE INFO ONLINE:**  
[www.homelandprop.com](http://www.homelandprop.com)

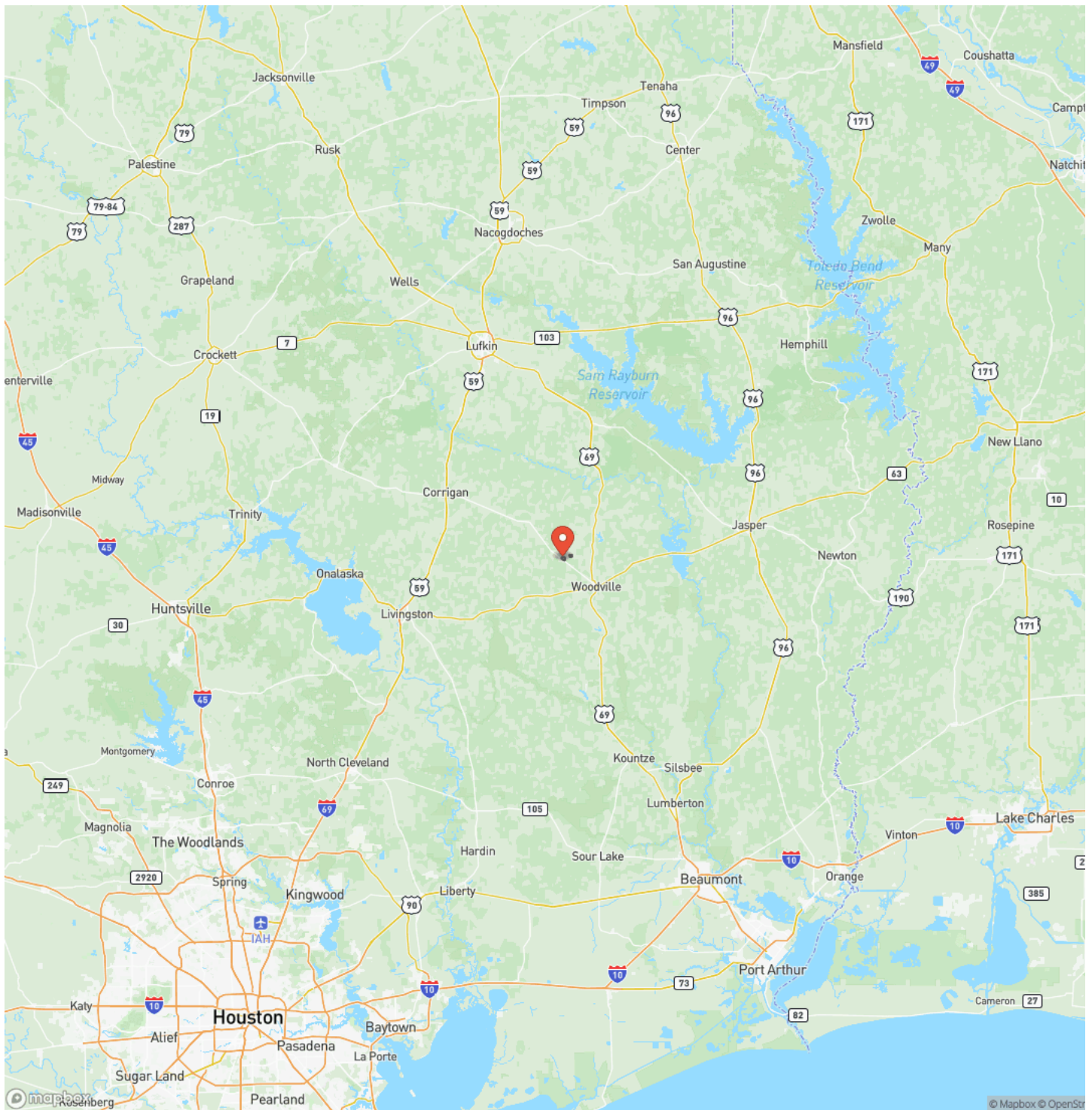
## Locator Map





47 Acres | T-1 | Highway 287  
Woodville, TX / Tyler County

## Locator Map





47 Acres | T-1 | Highway 287  
Woodville, TX / Tyler County

---

## Satellite Map



**47 Acres | T-1 | Highway 287**  
**Woodville, TX / Tyler County**

**LISTING REPRESENTATIVE**

**For more information contact:**



### Representative

Andy Flack

## Mobile

(936) 295-2500

## Email

agents@homelandprop.com

## Address

1600 Normal Park Dr

## City / State / Zip

Huntsville, TX 77340

## NOTES



**MORE INFO ONLINE:**

**www.homelandprop.com**



## This image shows a blank sheet of white paper with horizontal ruling lines. The lines are evenly spaced and run across the width of the page. There are no margins, text, or other markings on the paper.



## **DISCLAIMERS**

Information in this brochure is provided solely for information purposes and does not constitute an offer to sell or advertise real estate outside the states in which broker or agent licensed. The information presented has been obtained from sources deemed to be reliable, but is not guaranteed or warranted by the agent, broker, or the sellers of these properties. This offering is subject to errors, omissions, prior sale, price change, correction or withdrawal from the market without notice. All references to age, square footage, income, expenses, acreage, carrying capacity, and land classification, etc. are approximate. Prospective buyers are chargeable with and expected to conduct their own independent investigation of the information and the property and to rely only on those results. Sellers reserve the right to accept or reject any and all offers without liability to any buyer or cooperating broker.

Maps are provided for illustration purposes only, the accuracy is not warranted. Parcels on interactive maps are not adjusted to match aerial backgrounds. This information is for reference purposes only and is not a legal document. Data maps contain errors. The seller and seller's agent are making known to all potential buyers that there may be variations between the location of the existing fence lines and the legal description of the deeded property. Seller and seller's agent make no warranties with regard to the location of the fence lines in relationship to the deeded property lines, nor does the Seller make any warranties or representations with regard to the specific acreage contained within the fenced property lines. Seller is selling the property in an "as is" condition, which includes the location of the fences as they exist. Boundaries shown on the accompanying maps are approximate, based on county parcel data. The maps are not to scale. The accuracy of the maps is not guaranteed. Prospective buyers are encouraged to verify fence lines, deeded property lines and acreages using a licensed surveyor at their own expense.



**MORE INFO ONLINE:**

**[www.homelandprop.com](http://www.homelandprop.com)**



---

**HomeLand Properties, Inc.**  
1600 Normal Park Dr.  
Huntsville, TX 77340  
(936) 295-2500  
[www.homelandprop.com](http://www.homelandprop.com)

---



**MORE INFO ONLINE:**  
[www.homelandprop.com](http://www.homelandprop.com)