

95 AC +/- Spring Creek Twp, Pike County, IL
40533 Spring Creek Rd
Nebo, IL 62355

\$720,000
95.600± Acres
Pike County



**95 AC +/- Spring Creek Twp, Pike County, IL
Nebo, IL / Pike County**

SUMMARY

Address

40533 Spring Creek Rd

City, State Zip

Nebo, IL 62355

County

Pike County

Type

Farms, Recreational Land, Residential Property, Riverfront

Latitude / Longitude

39.437525 / -90.772148

Dwelling Square Feet

640

Bedrooms / Bathrooms

1 / 1

Acreage

95.600

Price

\$720,000



95 AC +/- Spring Creek Twp, Pike County, IL
Nebo, IL / Pike County

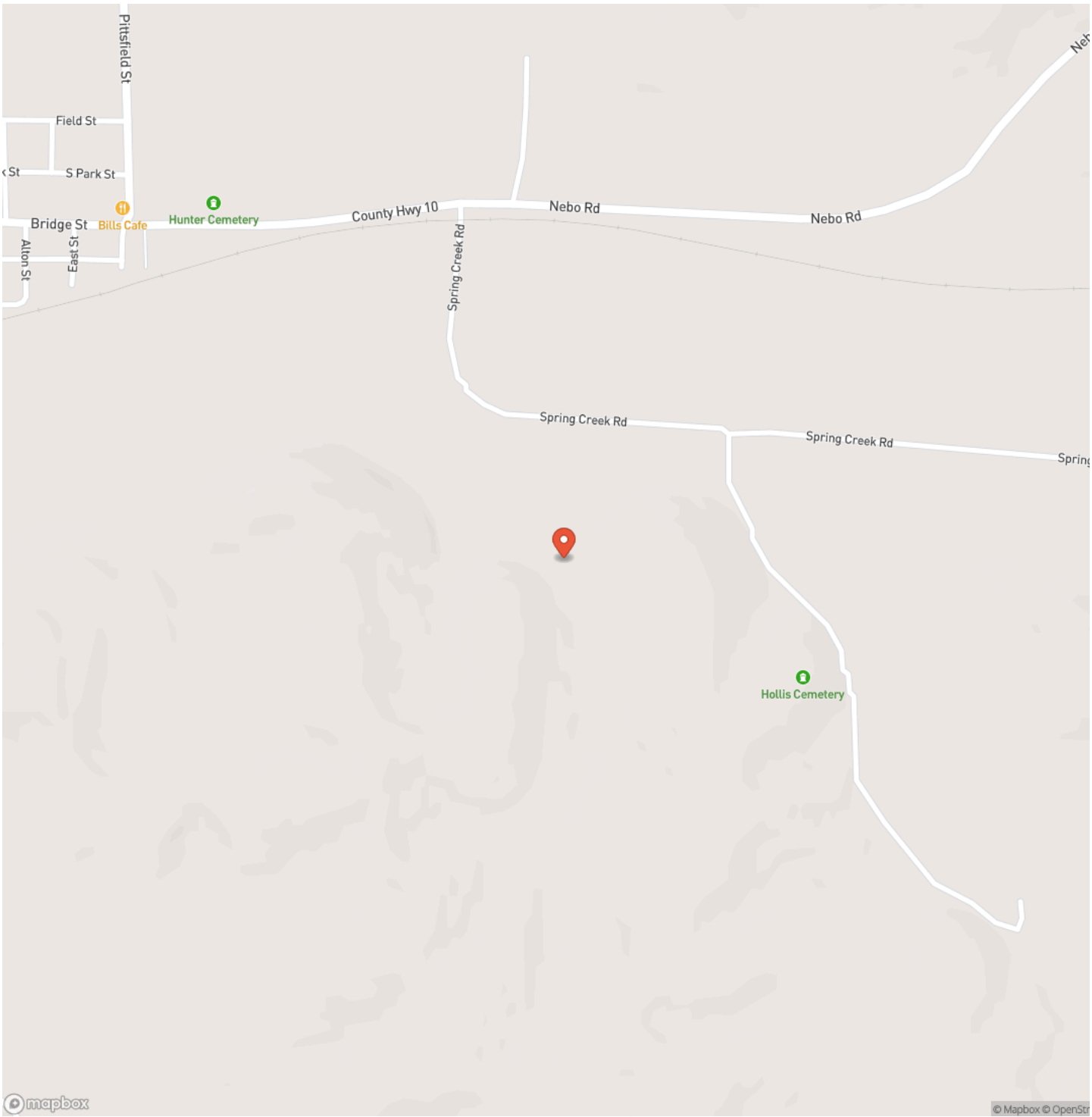
PROPERTY DESCRIPTION

Don't miss the opportunity to own a slice of paradise in southern Pike County, Illinois. If you are a serious whitetail hunter, and you are looking for the perfect, secluded getaway, this place is for you. The property includes a small 1-bedroom 1-bath cabin, complete with solar power, a water holding tank system, and wood-burning stove, that is tucked back up in the hollow overlooking the Spring Creek bottoms west of Nebo, IL. There are approximately 20 acres of both ridge top and creek bottom fields that are currently cash rented with a mix of corn and soybeans, providing both an annual income and a fantastic food source for the abundance of wildlife that call this farm home!! Give us a call today to schedule a private tour of this top-notch recreational and hunting property.

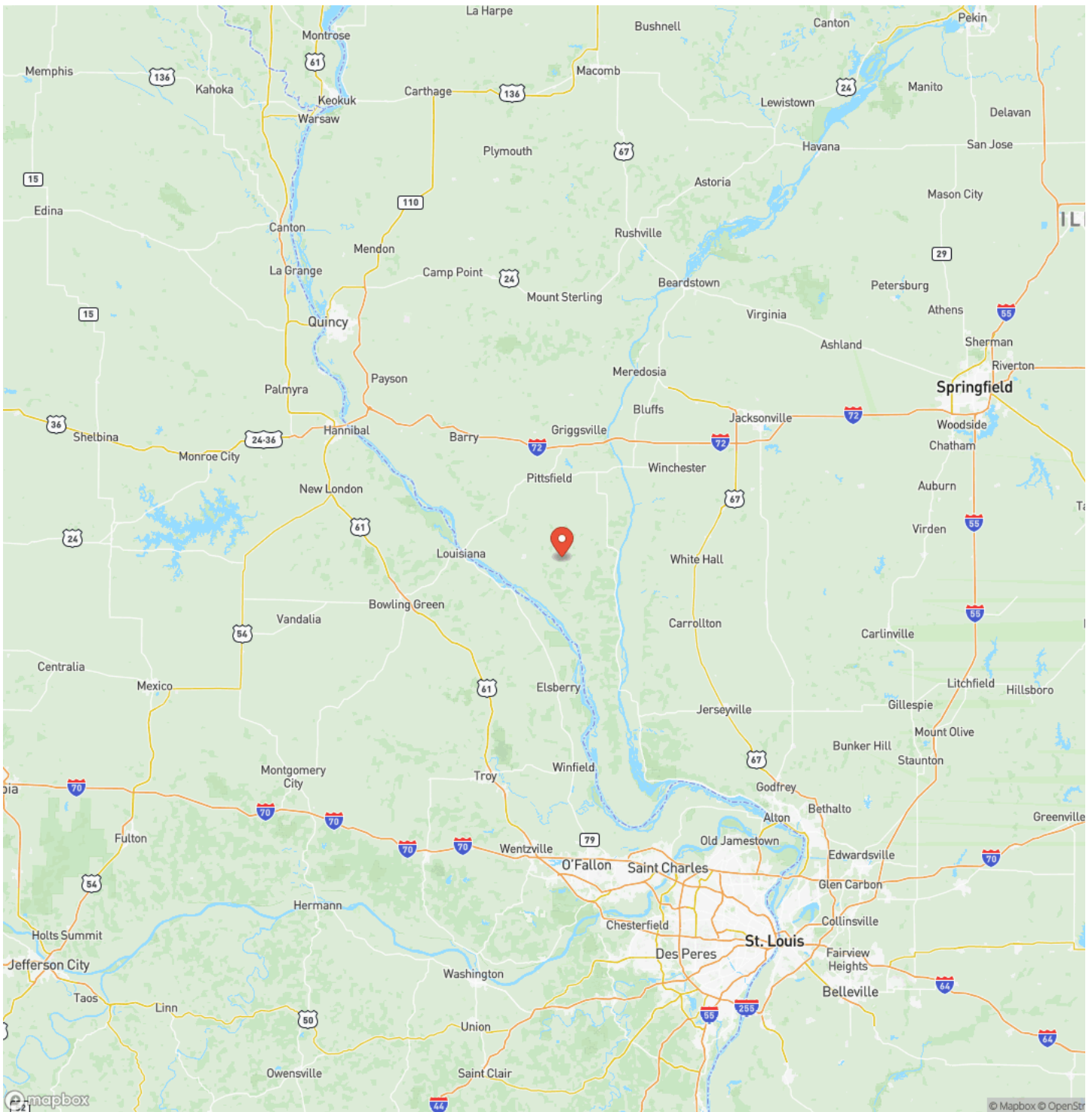
95 AC +/- Spring Creek Twp, Pike County, IL
Nebo, IL / Pike County



Locator Map

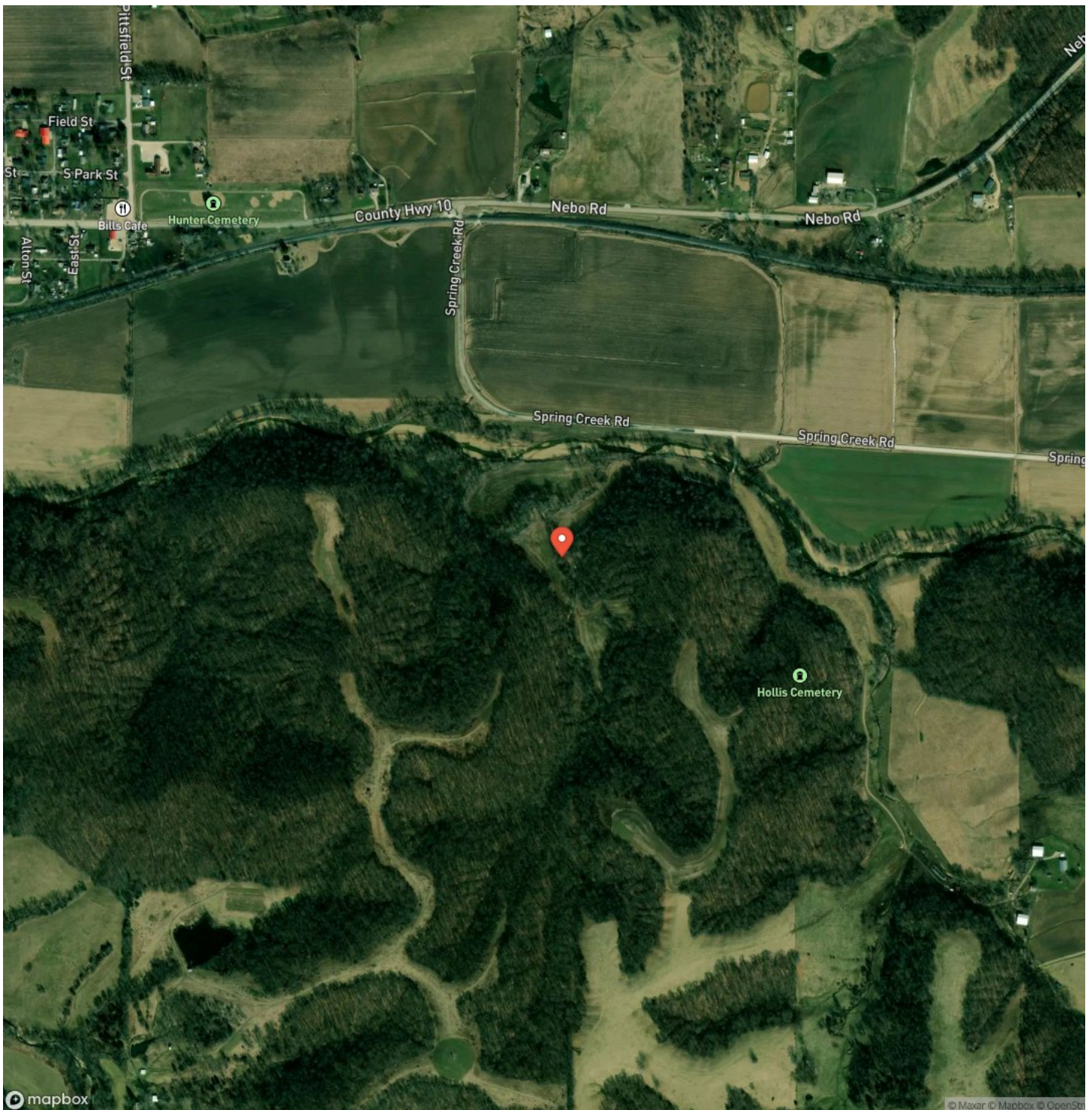


Locator Map



95 AC +/- Spring Creek Twp, Pike County, IL
Nebo, IL / Pike County

Satellite Map



**95 AC +/- Spring Creek Twp, Pike County, IL
Nebo, IL / Pike County**

LISTING REPRESENTATIVE

For more information contact:



Representative

Lacey Hoagland

Mobile

(618) 535-3800

Email

lhoagland@ridgelinesalesgroup.com

Address

City / State / Zip

Pittsfield, IL 62363

NOTES

This image shows a single sheet of white paper with horizontal ruling lines. The lines are evenly spaced and run across the width of the page. There are no margins or other markings on the paper.

This image shows a single sheet of white paper with horizontal ruling lines. The lines are evenly spaced and run across the width of the page. There are no margins, text, or other markings on the paper.

DISCLAIMERS

Information in this brochure is provided solely for information purposes and does not constitute an offer to sell or advertise real estate outside the states in which broker or agent licensed. The information presented has been obtained from sources deemed to be reliable, but is not guaranteed or warranted by the agent, broker, or the sellers of these properties. This offering is subject to errors, omissions, prior sale, price change, correction or withdrawal from the market without notice. All references to age, square footage, income, expenses, acreage, carrying capacity, and land classification, etc. are approximate. Prospective buyers are chargeable with and expected to conduct their own independent investigation of the information and the property and to rely only on those results. Sellers reserve the right to accept or reject any and all offers without liability to any buyer or cooperating broker.

Maps are provided for illustration purposes only, the accuracy is not warranted. Parcels on interactive maps are not adjusted to match aerial backgrounds. This information is for reference purposes only and is not a legal document. Data maps contain errors. The seller and seller's agent are making known to all potential buyers that there may be variations between the location of the existing fence lines and the legal description of the deeded property. Seller and seller's agent make no warranties with regard to the location of the fence lines in relationship to the deeded property lines, nor does the Seller make any warranties or representations with regard to the specific acreage contained within the fenced property lines. Seller is selling the property in an "as is" condition, which includes the location of the fences as they exist. Boundaries shown on the accompanying maps are approximate, based on county parcel data. The maps are not to scale. The accuracy of the maps is not guaranteed. Prospective buyers are encouraged to verify fence lines, deeded property lines and acreages using a licensed surveyor at their own expense.

Ridgeline Sales Group, LLC
116 W. Washington St.
Pittsfield, IL 62363
(217) 473-3777
www.ridgelinesalesgroup.com
