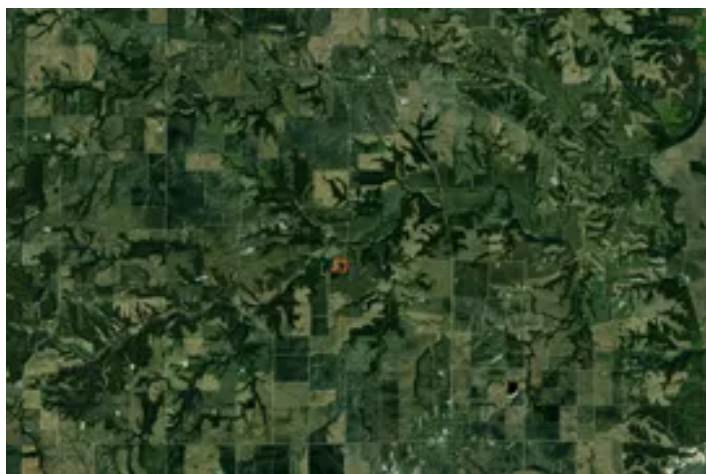


Pike County, Illinois 13 Acres of Land for Sale with Home
41493 335th Ave
Griggsville, IL 62340

\$1,000,000
13± Acres
Pike County



Pike County, Illinois 13 Acres of Land for Sale with Home Griggsville, IL / Pike County

SUMMARY

Address

41493 335th Ave

City, State Zip

Griggsville, IL 62340

County

Pike County

Type

Hunting Land, Recreational Land, Residential Property, Single Family

Latitude / Longitude

39.744346 / -90.753031

Dwelling Square Feet

4865

Bedrooms / Bathrooms

3 / 4

Acreage

13

Price

\$1,000,000

Property Website

<https://landguys.com/property/pike-county-illinois-13-acres-of-land-for-sale-with-home-pike-illinois/94996/>



Pike County, Illinois 13 Acres of Land for Sale with Home Griggsville, IL / Pike County

PROPERTY DESCRIPTION

13 Acres with Beautiful custom lodge home and regular big buck activity.

This custom lodge home sits on 13 acres with a nice pond and regular big buck activity. It is set up well for everyday living or as a comfortable hunting lodge getaway. The home includes 3 bedrooms, 4 full bathrooms, a large loft, and two impressive fireplaces that give the space a strong lodge feel.

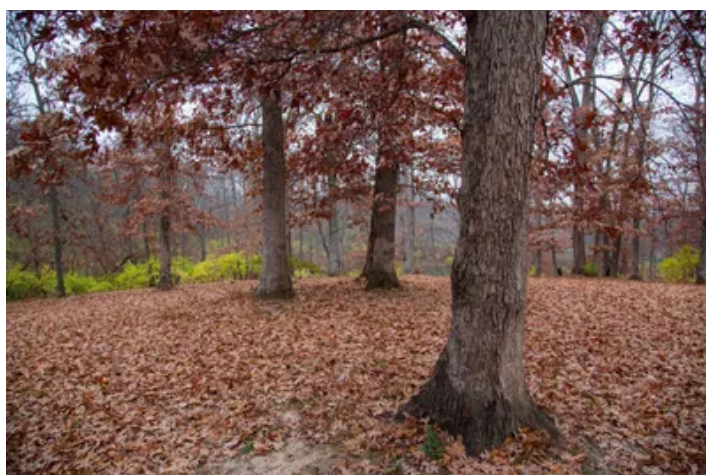
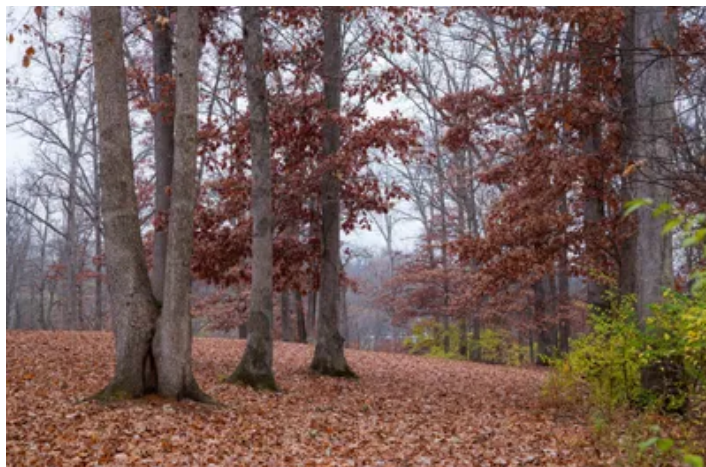
The primary suite offers plenty of room to relax with a private balcony overlooking the land. Two additional decks provide more outdoor space to take in the views. The walkout basement leads to a custom stone patio, making it easy to entertain or head out for the evening hunt. Along with the attached 2-car garage, there is an additional shop for tractors, UTVs, and storage.

A solid home on ground that produces. If you want space to live well and enjoy the outdoors right out your back door, this property has a lot to offer.

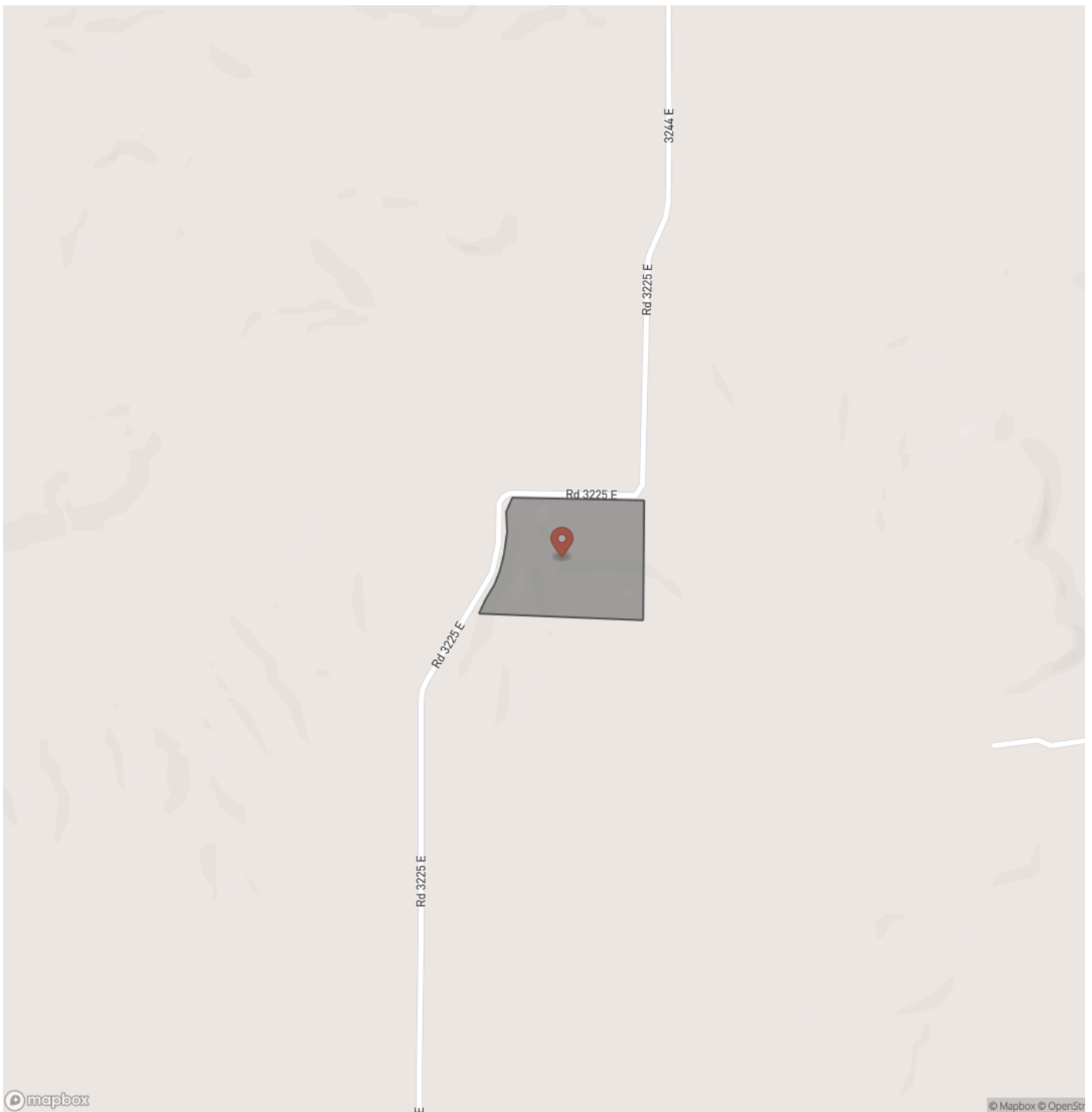
KEY FEATURES

- Custom lodge home with 3 bedrooms and 4 full bathrooms
- 13 acres with a nice pond and strong whitetail activity
- Large primary suite with private balcony
- Two additional decks overlooking the property
- Spacious loft and two giant custom fireplaces
- Walkout basement with custom stone back patio
- Attached 2-car garage
- Additional shop for equipment and storage
- A great setup for everyday living or a hunting lodge retreat

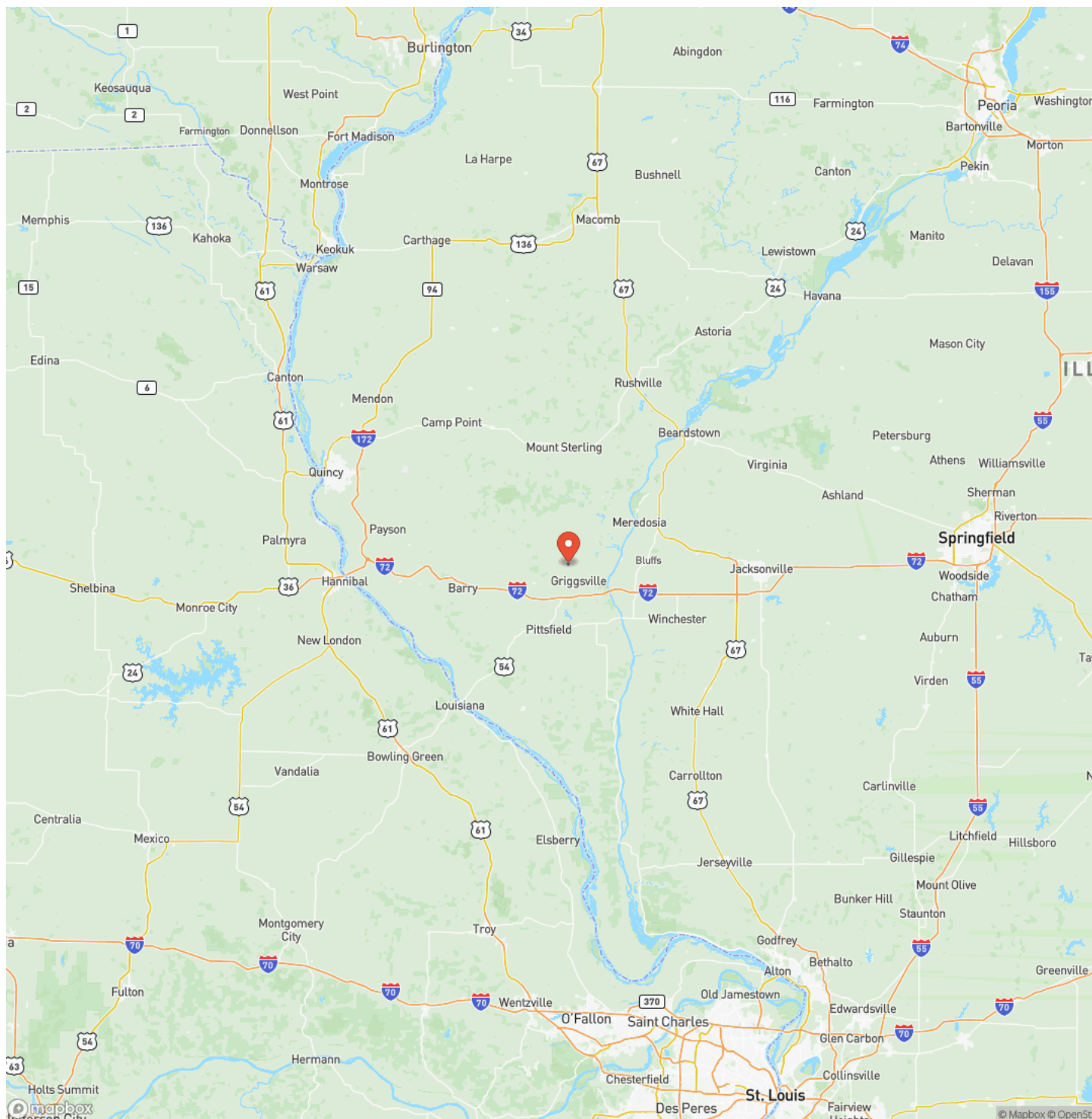
**Pike County, Illinois 13 Acres of Land for Sale with Home
Griggsville, IL / Pike County**



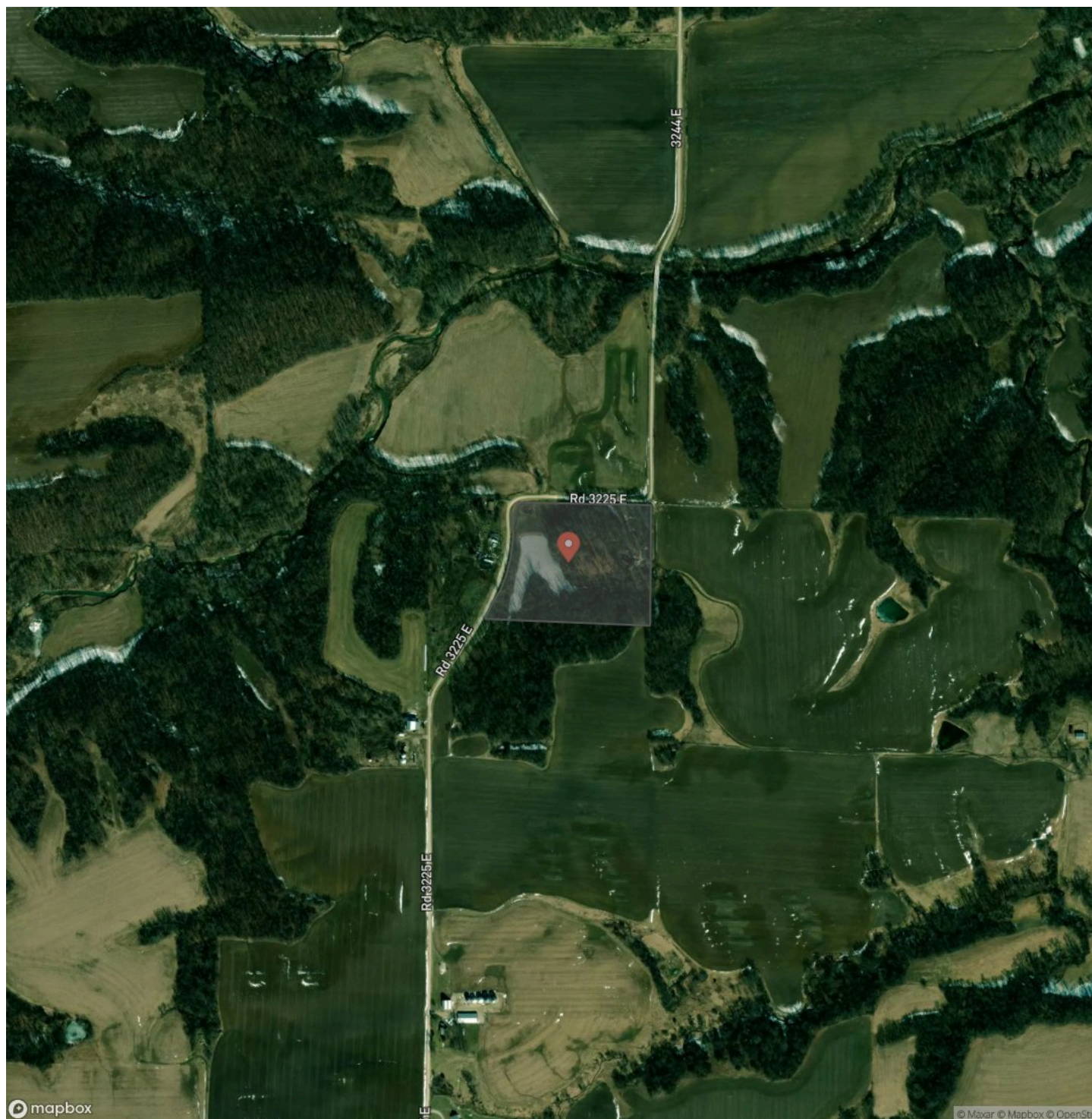
Locator Map



Locator Map



Satellite Map



Pike County, Illinois 13 Acres of Land for Sale with Home Griggsville, IL / Pike County

LISTING REPRESENTATIVE

For more information contact:



Representative

Adam Fencik

Mobile

(217) 242-0716

Office

(217) 899-1240

Email

adam@landguys.com

Address

City / State / Zip

NOTES

[illegible]

This image shows a single sheet of white paper with horizontal ruling lines. The lines are evenly spaced and run across the width of the page. There are no margins, text, or other markings on the paper.

DISCLAIMERS

Information in this brochure is provided solely for information purposes and does not constitute an offer to sell or advertise real estate outside the states in which broker or agent licensed. The information presented has been obtained from sources deemed to be reliable, but is not guaranteed or warranted by the agent, broker, or the sellers of these properties. This offering is subject to errors, omissions, prior sale, price change, correction or withdrawal from the market without notice. All references to age, square footage, income, expenses, acreage, carrying capacity, and land classification, etc. are approximate. Prospective buyers are chargeable with and expected to conduct their own independent investigation of the information and the property and to rely only on those results. Sellers reserve the right to accept or reject any and all offers without liability to any buyer or cooperating broker.

Maps are provided for illustration purposes only, the accuracy is not warranted. Parcels on interactive maps are not adjusted to match aerial backgrounds. This information is for reference purposes only and is not a legal document. Data maps contain errors. The seller and seller's agent are making known to all potential buyers that there may be variations between the location of the existing fence lines and the legal description of the deeded property. Seller and seller's agent make no warranties with regard to the location of the fence lines in relationship to the deeded property lines, nor does the Seller make any warranties or representations with regard to the specific acreage contained within the fenced property lines. Seller is selling the property in an "as is" condition, which includes the location of the fences as they exist. Boundaries shown on the accompanying maps are approximate, based on county parcel data. The maps are not to scale. The accuracy of the maps is not guaranteed. Prospective buyers are encouraged to verify fence lines, deeded property lines and acreages using a licensed surveyor at their own expense.

LandGuys
4331 Conestoga Dr
Springfield, IL 62711
(217) 899-1240
www.landguys.com
