

186 Acres | T-3 | County Road 821 | 01346
County Road 821
Mauriceville, TX 77612

\$665,508
186± Acres
Jasper County



MORE INFO ONLINE:
www.homelandprop.com

186 Acres | T-3 | County Road 821 | 01346
Mauriceville, TX / Jasper County

SUMMARY

Address

County Road 821

City, State Zip

Mauriceville, TX 77612

County

Jasper County

Type

Hunting Land, Recreational Land, Timberland

Latitude / Longitude

30.288944932 / -93.9041367948

Acreage

186

Price

\$665,508

Property Website

<https://homelandprop.com/property/186-acres-t-3-county-road-821-01346-jasper-texas/74231/>



MORE INFO ONLINE:

www.homelandprop.com

186 Acres | T-3 | County Road 821 | 01346
Mauriceville, TX / Jasper County

PROPERTY DESCRIPTION

1st time open market offering. Historically owned by large timber company(ies). Frontage on CR 821 with low traffic. Nice area/neighborhood. Densely wooded and high/dry with no floodplain (see "Topogaphy Map", herein.) Close proximity to SH 62 makes for easy access. Electricity adjacent to tract. Water in the area (subject to confirmation).

Utilities: Electricity available, Water available

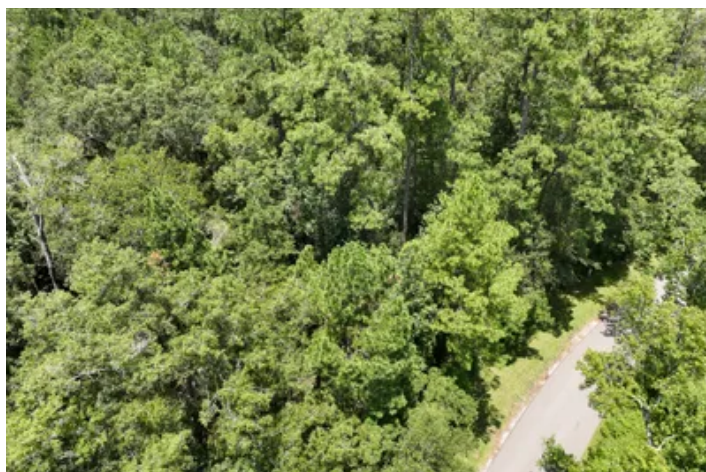
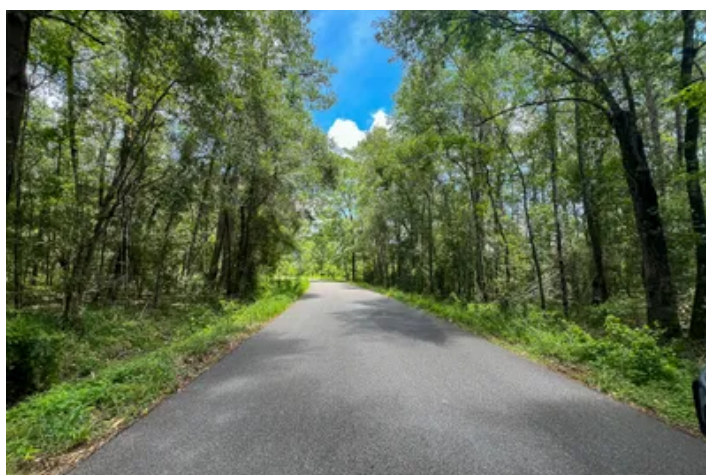
School District: Buna ISD



MORE INFO ONLINE:

www.homelandprop.com

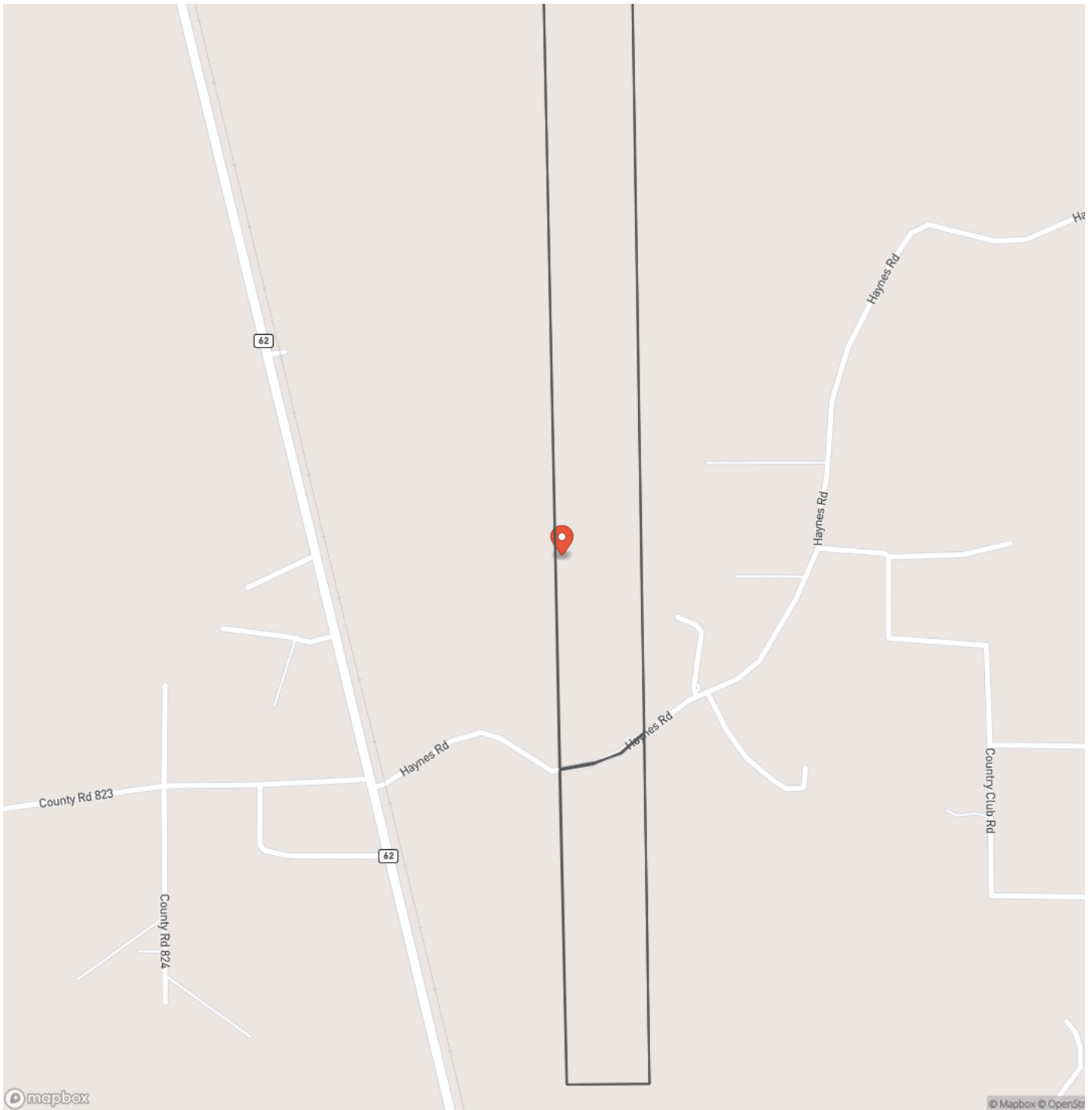
186 Acres | T-3 | County Road 821 | 01346
Mauriceville, TX / Jasper County



MORE INFO ONLINE:
www.homelandprop.com

186 Acres | T-3 | County Road 821 | 01346
Mauriceville, TX / Jasper County

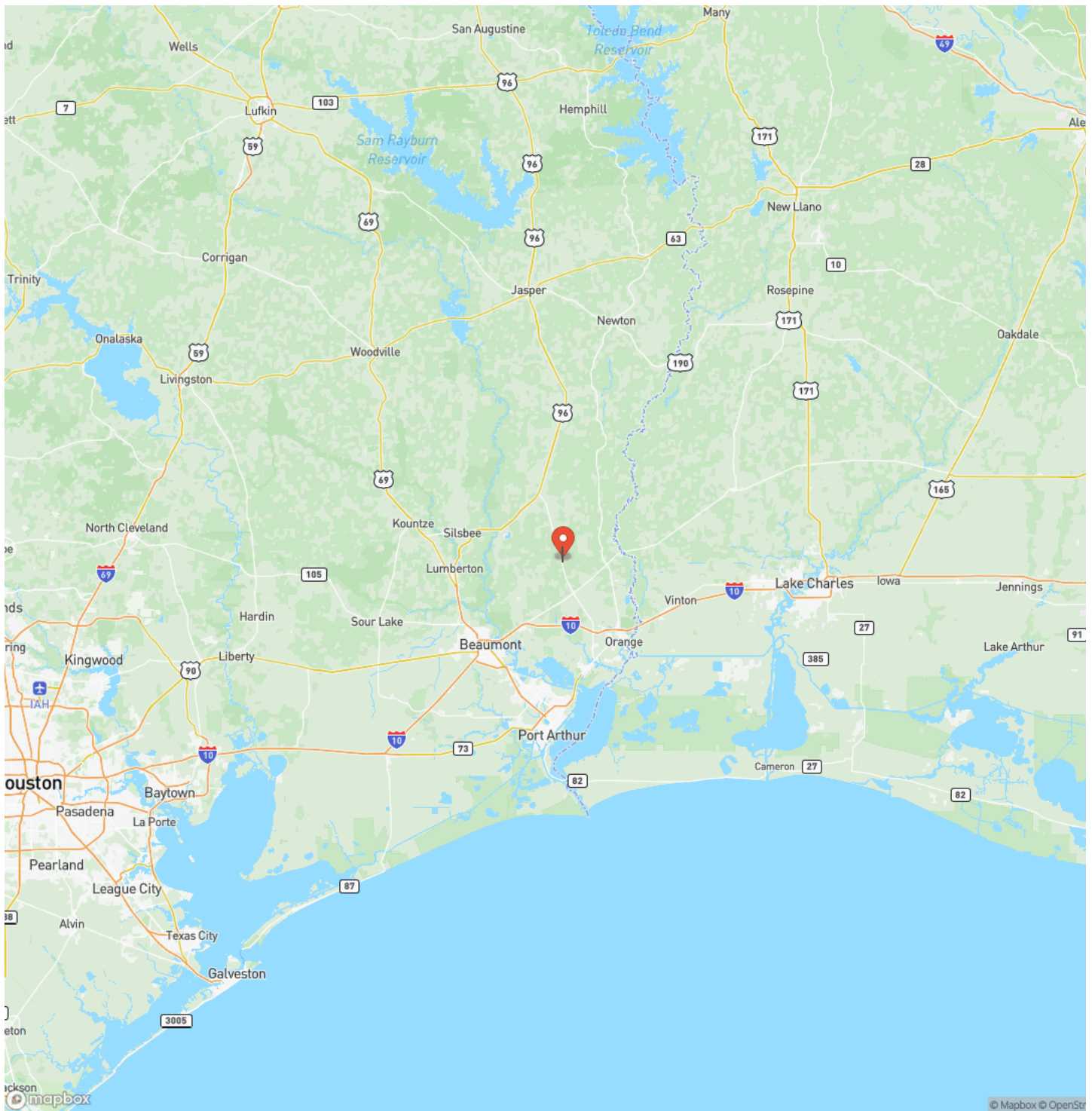
Locator Map



MORE INFO ONLINE:
www.homelandprop.com

Mauriceville, TX / Jasper County

Locator Map

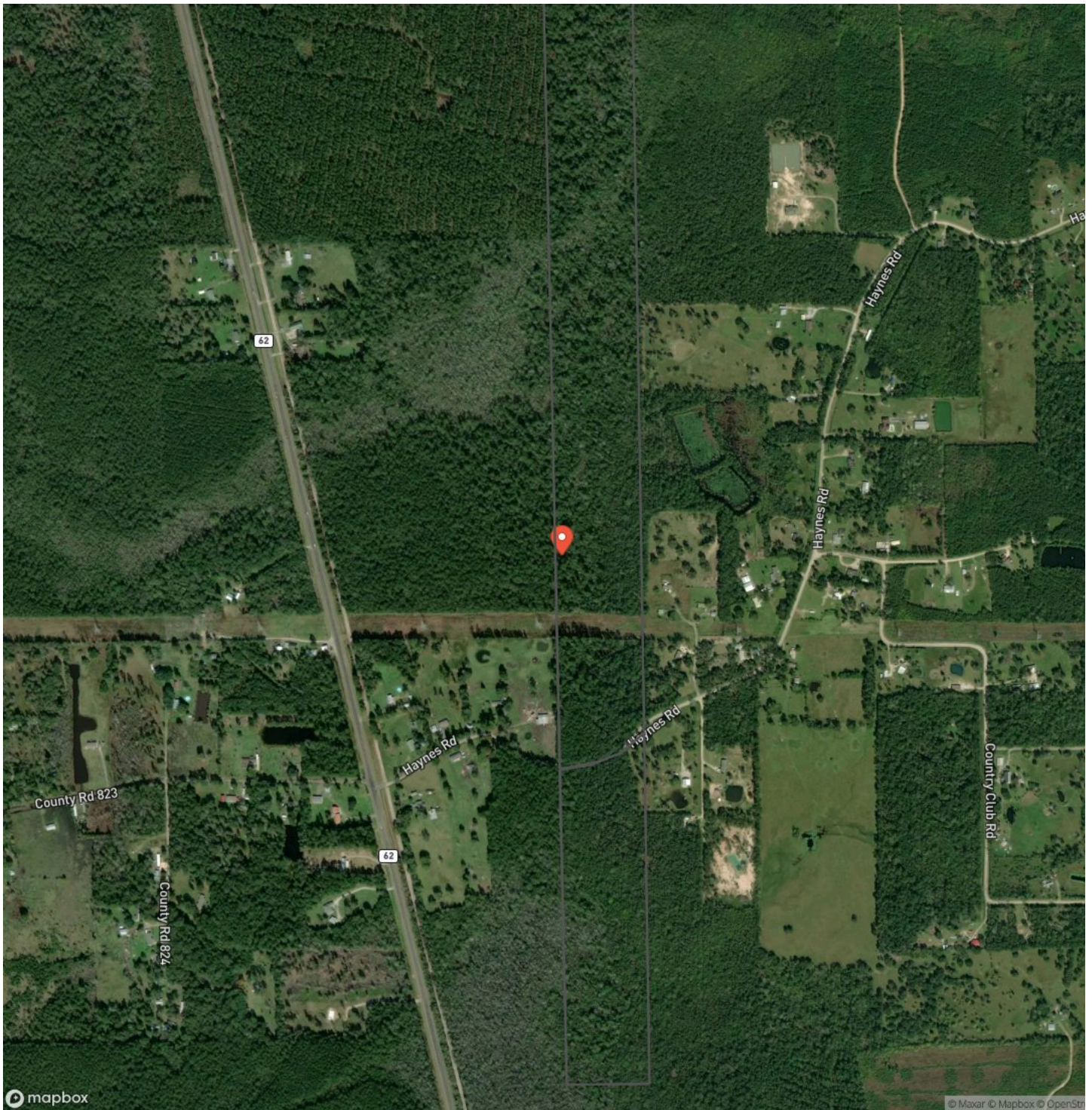


MORE INFO ONLINE:

www.homelandprop.com

186 Acres | T-3 | County Road 821 | 01346
Mauriceville, TX / Jasper County

Satellite Map



MORE INFO ONLINE:

www.homelandprop.com

186 Acres | T-3 | County Road 821 | 01346
Mauriceville, TX / Jasper County

LISTING REPRESENTATIVE

For more information contact:



Representative

Andy Flack

Mobile

(936) 295-2500

Email

agents@homelandprop.com

Address

1600 Normal Park Dr

City / State / Zip

NOTES



MORE INFO ONLINE:

www.homelandprop.com

This image shows a blank sheet of white paper with horizontal ruling lines. The lines are evenly spaced and run across the width of the page. There are no margins, text, or other markings on the paper.



DISCLAIMERS

Listing Disclaimer

The use and/or reproduction of any marketing materials generated by HomeLand Properties, Inc. and/or its associated clients, including, but not limited to, maps, videos, photos, spreadsheets, diagrams, contracts, documents, etc. is strictly prohibited without written consent. The information contained herein is from sources deemed reliable but is not guaranteed by HomeLand Properties, Inc. The offerings are subject to change in price, errors, omissions, prior sales or withdrawal without notice. This disclaimer supersedes any & all information published by other MLS sites whether by permission or not, including, but not limited to, co-broker fees, if any. Acreage size and dimensions are approximate. County Appraisal District (CAD) market and tax values, as well as acreage size and/or shape, are not applicable to real estate market conditions and/or this solicitation, other than for ag value (1D1) purposes.

Title and Survey Disclaimer

Expense subject to negotiation. Seller requires use of seller's preferred surveyor/title company.

Mineral Disclaimer

Oil and gas minerals have been reserved by prior owners. Other reservations subject to title and/or sellers contract when applicable.

Easement Disclaimer

Visible and apparent and/or marked in field - Utilities

Tax Disclaimer

Approximately \$5/Ac/Yr with timber exemption. Properties may qualify for future exemption subject to usage.



MORE INFO ONLINE:

www.homelandprop.com

HomeLand Properties, Inc.
1600 Normal Park Dr.
Huntsville, TX 77340
(936) 295-2500
www.homelandprop.com



MORE INFO ONLINE:
www.homelandprop.com