

88 acres +/- in Hale County, AL
Hale County Road 32
Akron, AL 35441

\$281,600
88± Acres
Hale County



88 acres +/- in Hale County, AL
Akron, AL / Hale County

SUMMARY

Address

Hale County Road 32

City, State Zip

Akron, AL 35441

County

Hale County

Type

Hunting Land, Recreational Land

Latitude / Longitude

32.808006 / -87.658414

Acreage

88

Price

\$281,600

Property Website

<https://farmandforestbrokers.com/property/88-acres-in-hale-county-al-hale-alabama/80468/>



88 acres +/- in Hale County, AL
Akron, AL / Hale County

PROPERTY DESCRIPTION

88 acres +/- of land for sale in the Akron community of Hale County, Alabama. The timber on this property was clear cut in 2024 (aerial maps have not updated yet). The land has frontage on Hale County Road 32. There are several internal roads and trails that lead to a few established food plots. The property has paved road frontage, and there are two well-established entrances into the property from the paved road. There is a small stream that flows through the land, providing water for the wildlife. This area generally has pretty good deer and turkey hunting. You could easily convert some of the flatter areas to pasture or make a field for dove hunting. Power is available along the county road, if you wanted to build a cabin or have a rural homestead. An additional 49 acres +/- is located south of the paved road if you are desiring additional acreage.

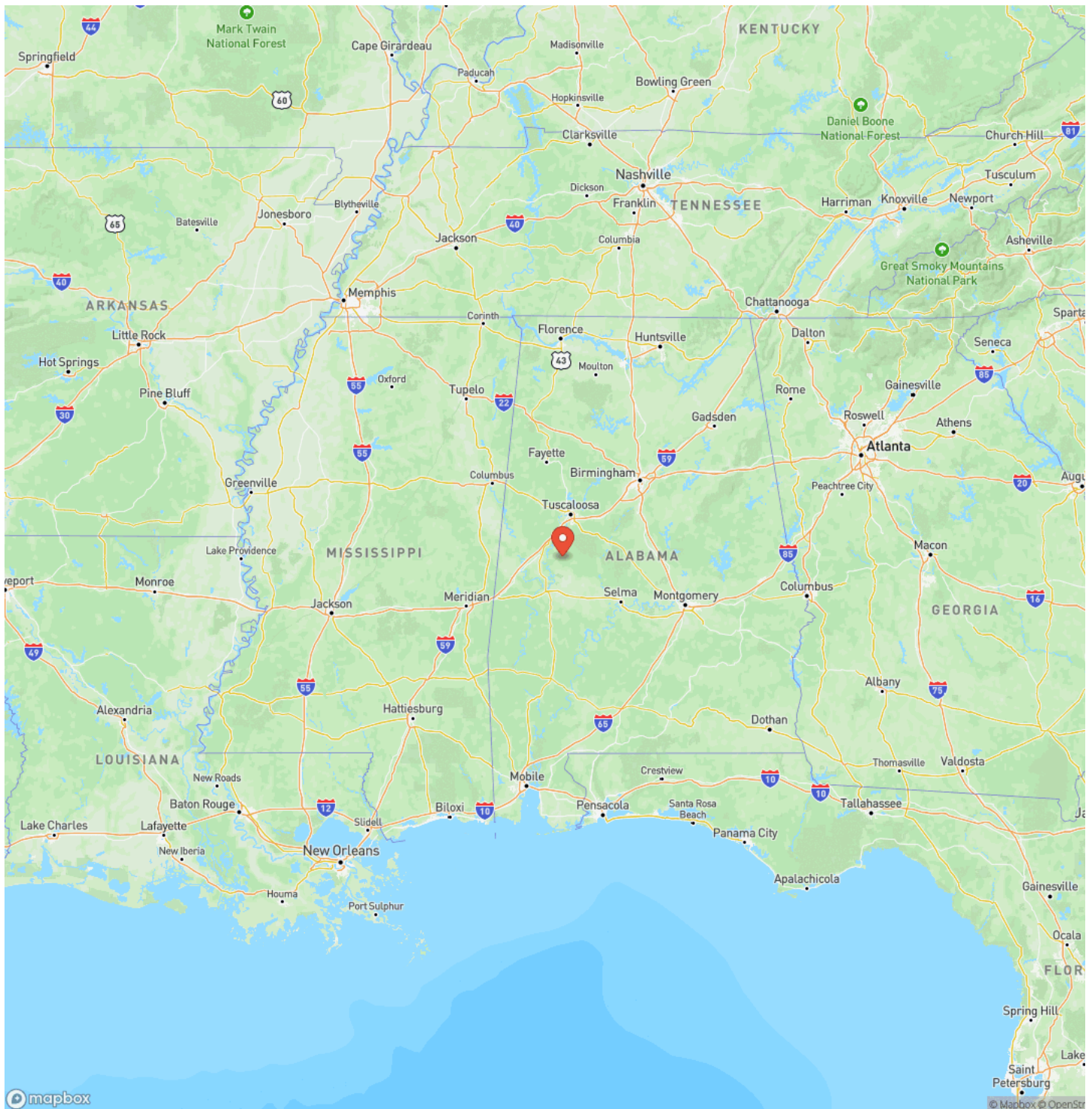
Location- The property is located on Hale County Road 32, which is a paved county road. The land is located 9 miles north of Greensboro, 33 miles to Tuscaloosa, 85 miles to Birmingham, 43 miles to Centreville, 33 miles to Marion, and 34 miles to Demopolis. Showings are by appointment please, so contact Jonathan Goode to schedule your visit to this property today.



88 acres +/- in Hale County, AL
Akron, AL / Hale County

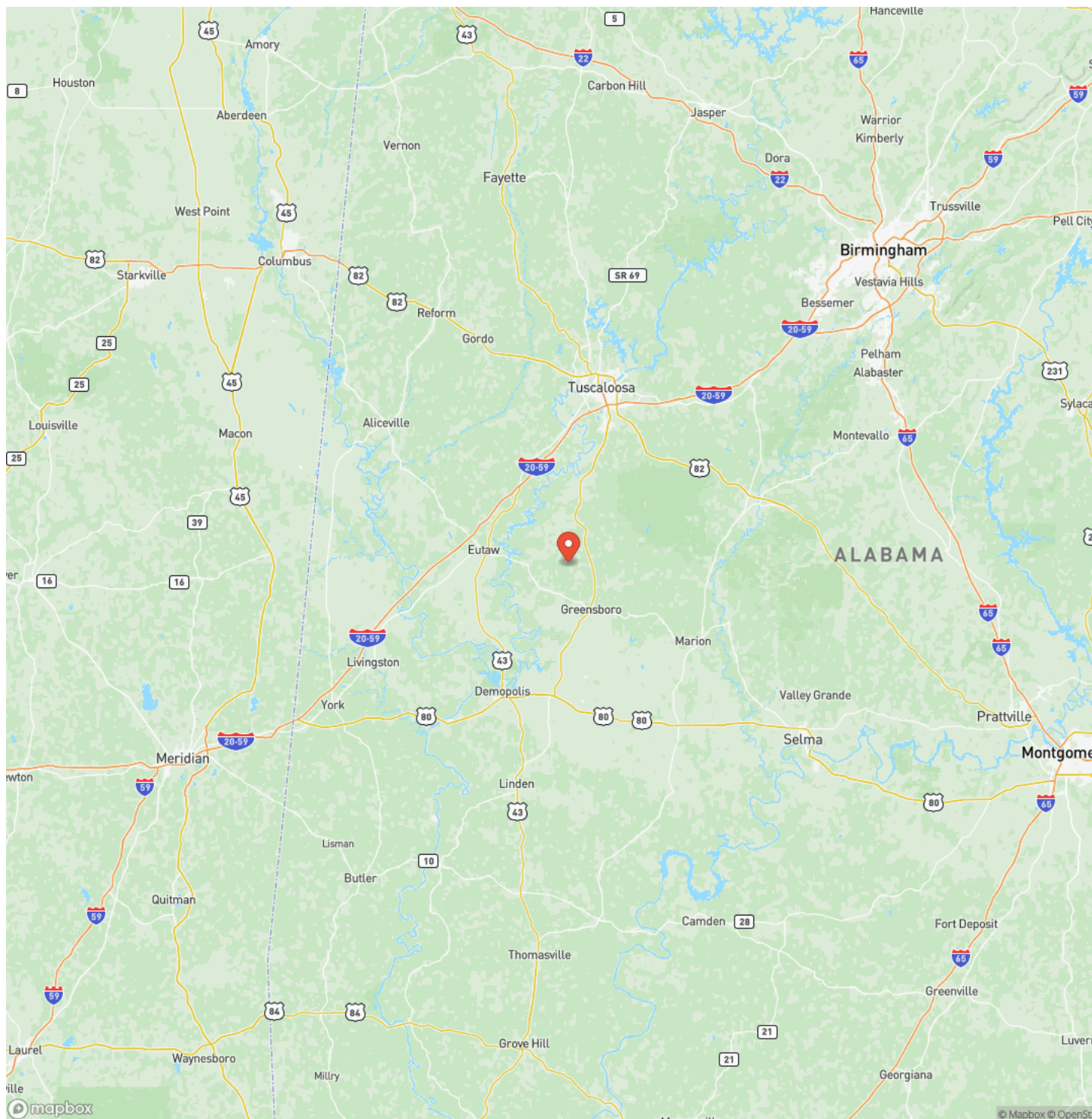


Locator Map



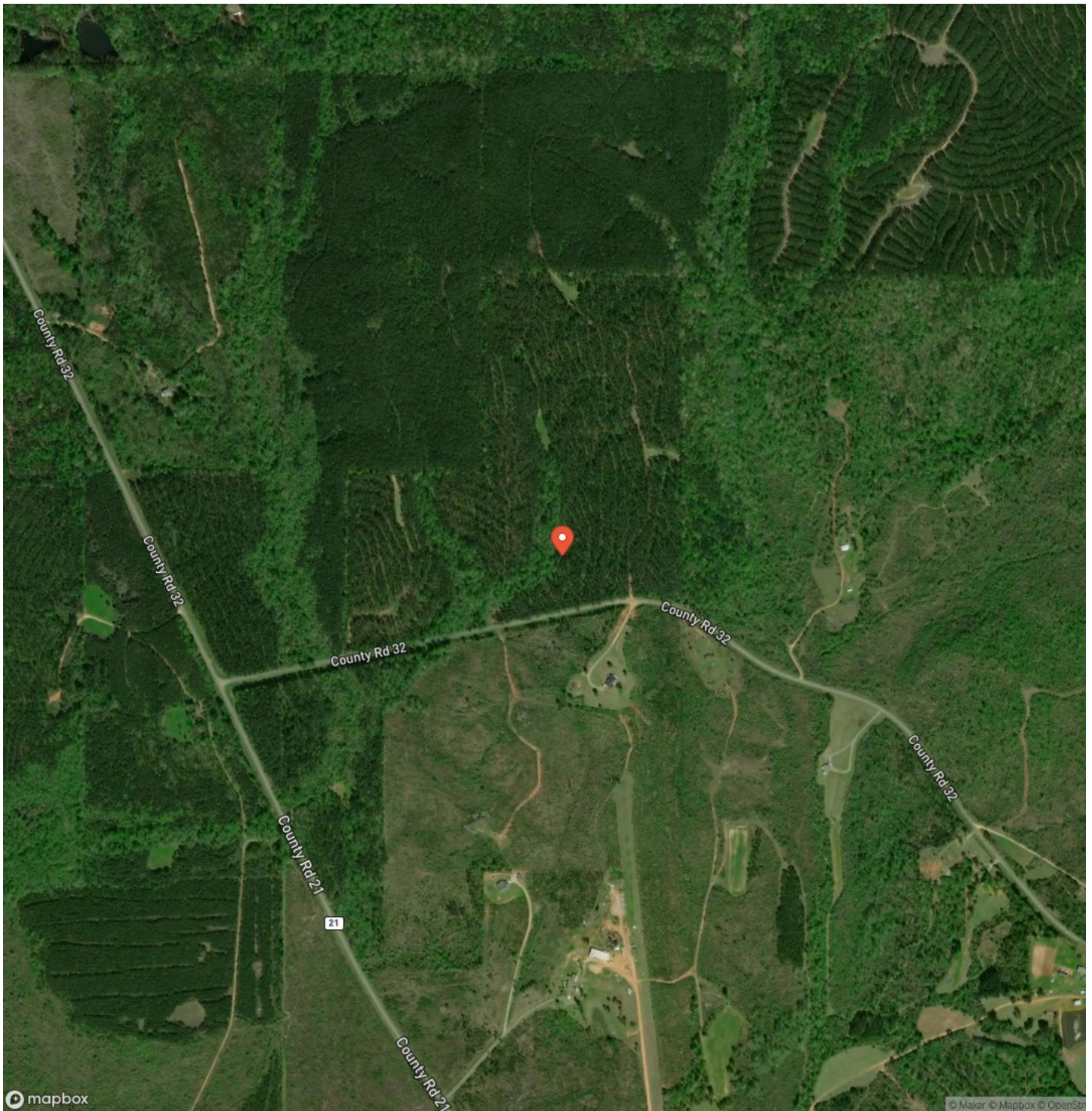
88 acres +/- in Hale County, AL
Akron, AL / Hale County

Locator Map



88 acres +/- in Hale County, AL
Akron, AL / Hale County

Satellite Map



88 acres +/- in Hale County, AL
Akron, AL / Hale County

LISTING REPRESENTATIVE

For more information contact:



Representative

Jonathan Goode

Mobile

(334) 247-2005

Office

(205) 340-3946

Email

jonathan@farmandforestbrokers.com

Address

155 Birmingham Road

City / State / Zip

NOTES

[illegible]

MORE INFO ONLINE:

farmandforestbrokers.com/

[illegible]

DISCLAIMERS

Information in this brochure is provided solely for information purposes and does not constitute an offer to sell or advertise real estate outside the states in which broker or agent is licensed. The information presented has been obtained from sources deemed to be reliable, but is not guaranteed or warranted by the agent, broker, or the sellers of these properties. This offering is subject to errors, omissions, prior sale, price change, correction or withdrawal from the market without notice. All references to age, square footage, income, expenses, acreage, carrying capacity, and land classification, etc. are derived from sources believed to be accurate, but are approximate. Prospective buyers are chargeable with and expected to conduct their own independent investigation of the information and the property and to rely only on those results. Sellers reserve the right to accept or reject any and all offers without liability to any buyer or cooperating broker.

Maps are provided for illustration purposes only, the accuracy is not warranted. Parcels on interactive maps are not adjusted to match aerial backgrounds. This information is for reference purposes only and is not a legal document. Data maps contain errors. The seller and seller's agent are making known to all potential buyers that there may be variations between the location of the existing boundary lines and the legal description of the deeded property. Seller and seller's agent make no warranties with regard to the location of the boundary lines in relationship to the deeded property lines, nor does the Seller make any warranties or representations with regard to the specific acreage contained within the property lines. Seller is selling the property in an "as is" condition. Boundaries shown on the accompanying maps are approximate, based on county parcel data. The maps are not to scale. The accuracy of the maps is not guaranteed. Prospective buyers are encouraged to verify fence lines, deeded property lines and acreages using a licensed surveyor at their own expense.

Farm & Forest Brokers
155 Birmingham Road
Centreville, AL 35042
(205) 340-3946
farmandforestbrokers.com/

