

20 Acres Chambers County
1971 CR-266
Lanett, AL 36863

\$129,990
20± Acres
Chambers County



20 Acres Chambers County
Lanett, AL / Chambers County

SUMMARY

Address

1971 CR-266

City, State Zip

Lanett, AL 36863

County

Chambers County

Type

Recreational Land, Hunting Land, Undeveloped Land

Latitude / Longitude

32.98096 / -85.24836

Acreage

20

Price

\$129,990

Property Website

<https://farmandforestbrokers.com/property/20-acres-chambers-county-chambers-alabama/83159/>



PROPERTY DESCRIPTION

20± Acres – Prime Hunting & Homesite Opportunity in Chambers County, AL

Don't miss this beautiful 20± acre tract located in Chambers County, Alabama—just minutes from the Georgia state line. This versatile property features a well-maintained pine plantation, a flowing creek, and mature hardwoods, offering a picturesque and diverse landscape.

An ideal setting for the outdoor enthusiast, the land is **loaded with deer and turkeys**, making it a prime location for hunting or a private weekend retreat. With **several potential homesites**, this property also offers great residential or recreational possibilities. Enjoy **road frontage on County Road 266** and convenient access to **power nearby**, making future development easier.

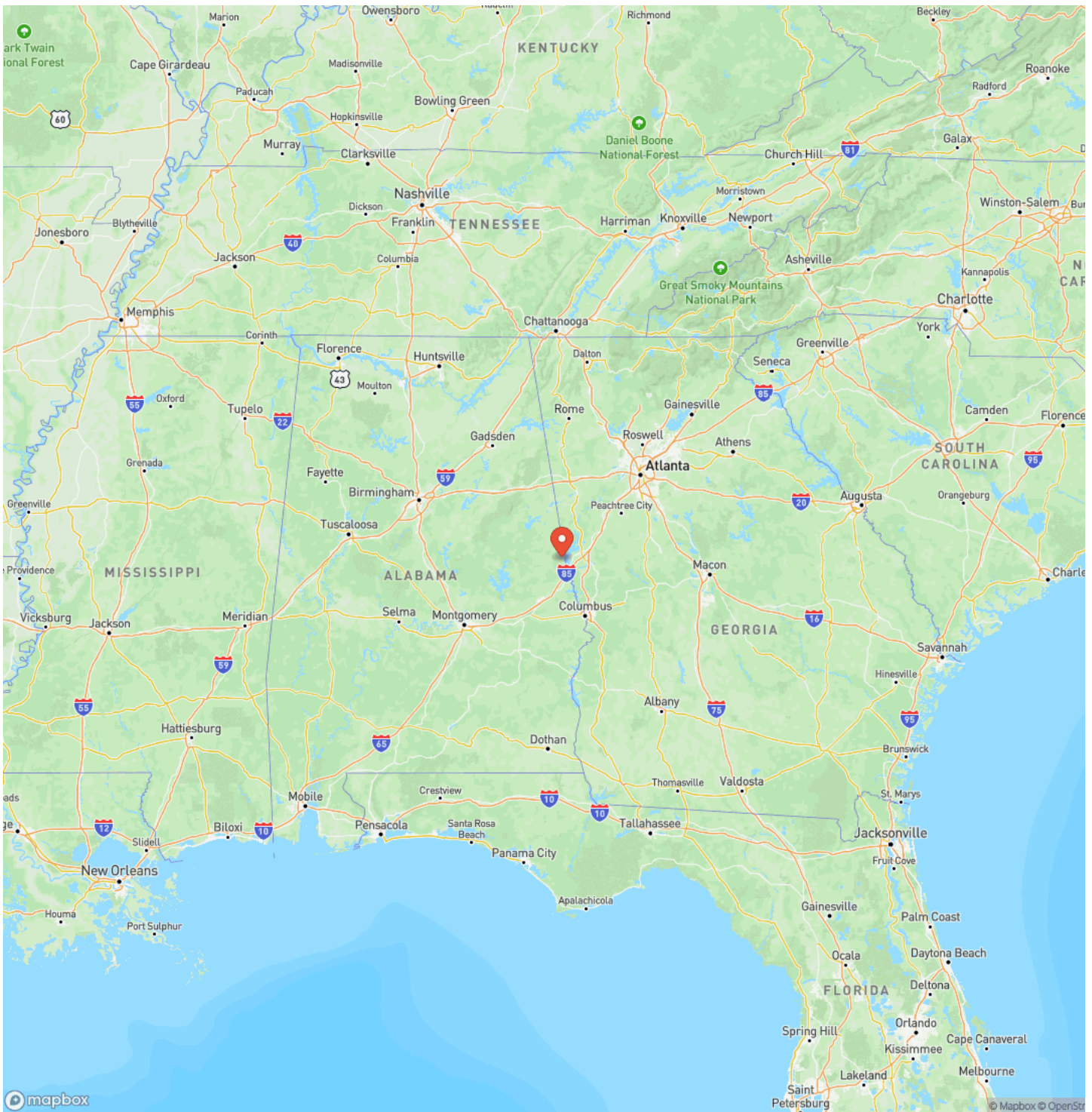
Whether you're looking to build, hunt, or invest in land with strong potential, this tract checks all the boxes.



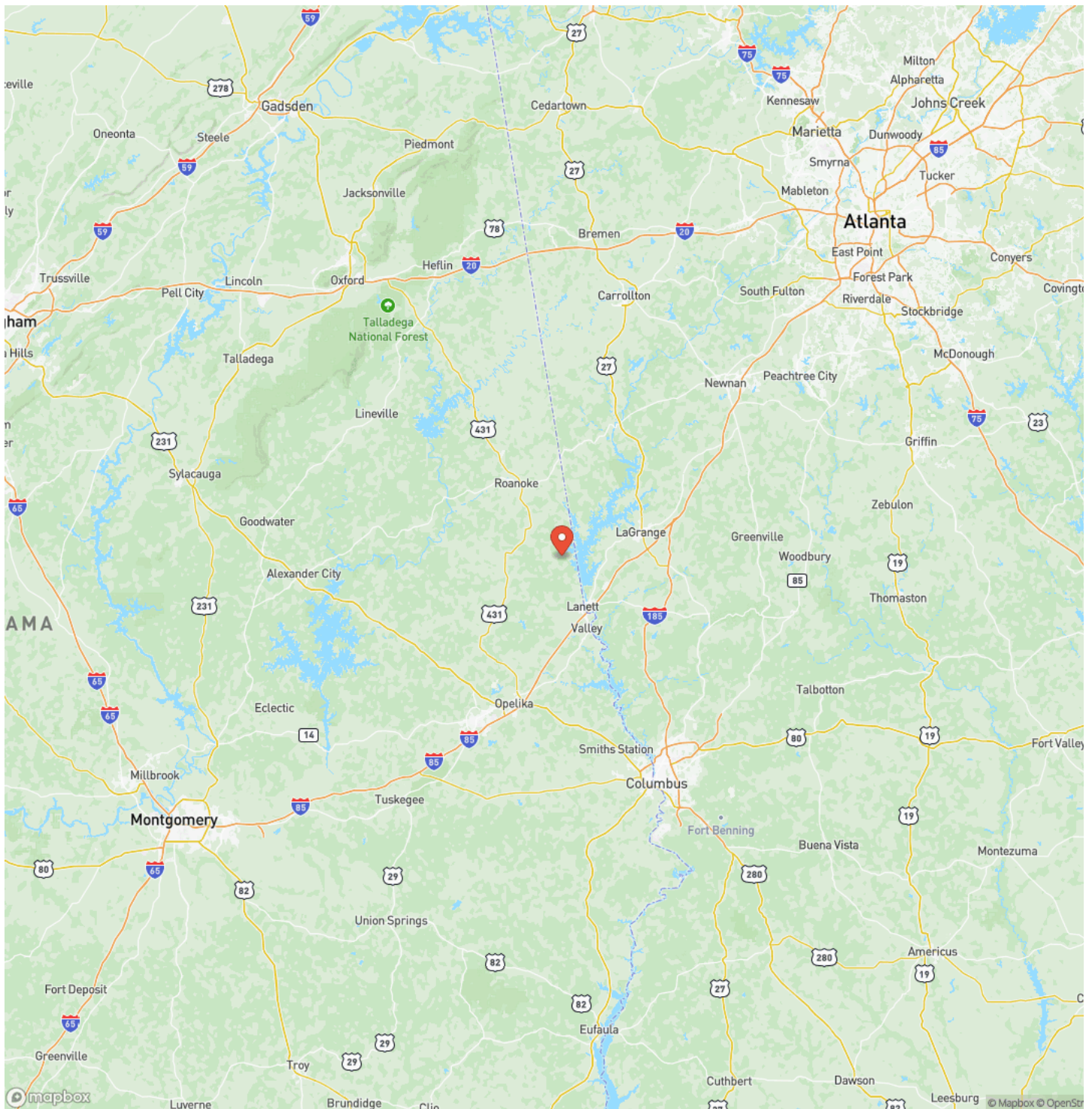
20 Acres Chambers County
Lanett, AL / Chambers County



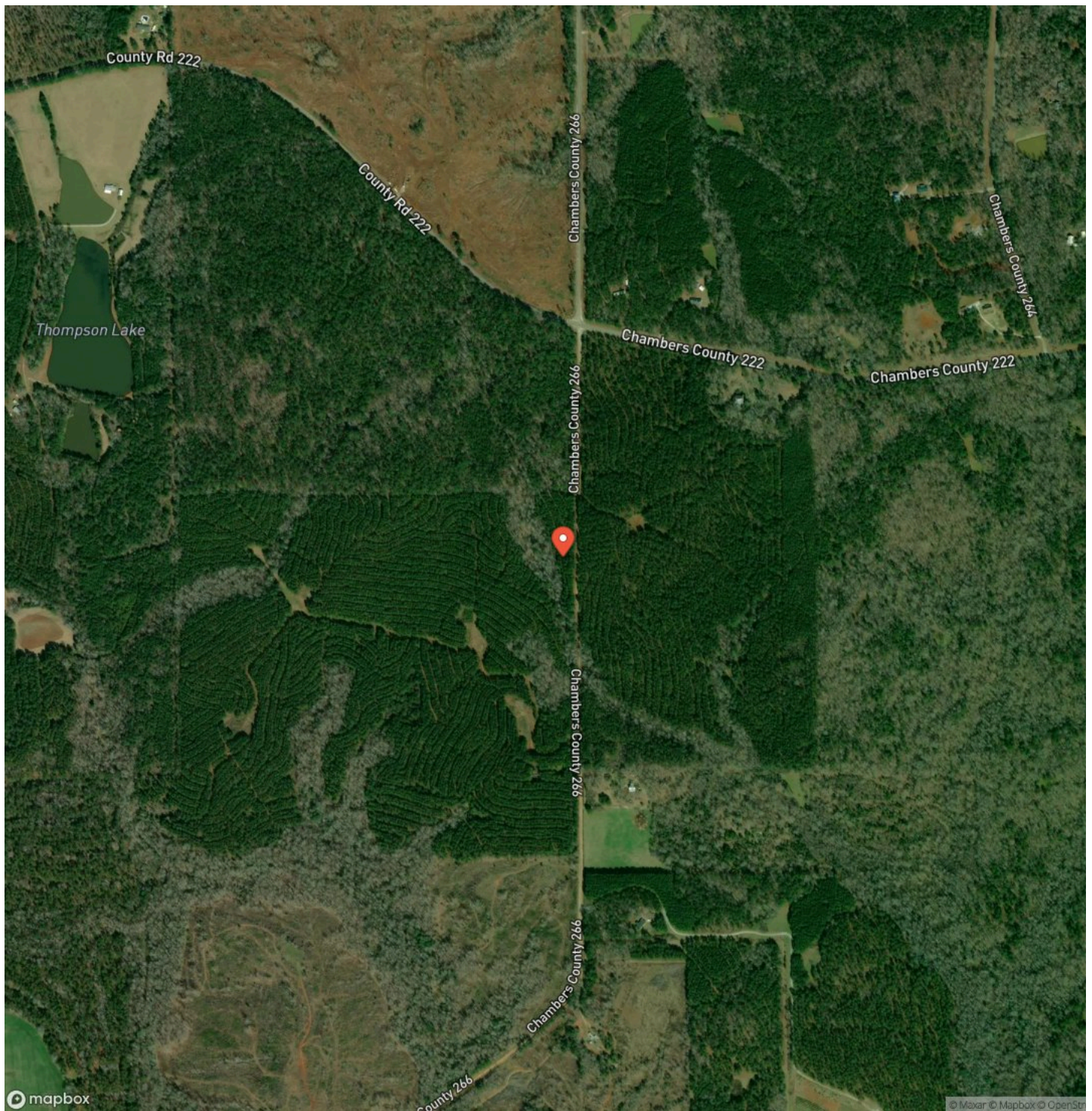
Locator Map



Locator Map



Satellite Map



LISTING REPRESENTATIVE

For more information contact:



Representative

Tyler Briggs

Mobile

(706) 593-3639

Email

tyler@farmandforestbrokers.com

Address

City / State / Zip

NOTES

[illegible]

NOTES

This image shows a blank sheet of white paper with horizontal ruling lines. The lines are evenly spaced and run across the width of the page. There are no margins, text, or other markings on the paper.

DISCLAIMERS

Information in this brochure is provided solely for information purposes and does not constitute an offer to sell or advertise real estate outside the states in which broker or agent is licensed. The information presented has been obtained from sources deemed to be reliable, but is not guaranteed or warranted by the agent, broker, or the sellers of these properties. This offering is subject to errors, omissions, prior sale, price change, correction or withdrawal from the market without notice. All references to age, square footage, income, expenses, acreage, carrying capacity, and land classification, etc. are derived from sources believed to be accurate, but are approximate. Prospective buyers are chargeable with and expected to conduct their own independent investigation of the information and the property and to rely only on those results. Sellers reserve the right to accept or reject any and all offers without liability to any buyer or cooperating broker.

Maps are provided for illustration purposes only, the accuracy is not warranted. Parcels on interactive maps are not adjusted to match aerial backgrounds. This information is for reference purposes only and is not a legal document. Data maps contain errors. The seller and seller's agent are making known to all potential buyers that there may be variations between the location of the existing boundary lines and the legal description of the deeded property. Seller and seller's agent make no warranties with regard to the location of the boundary lines in relationship to the deeded property lines, nor does the Seller make any warranties or representations with regard to the specific acreage contained within the property lines. Seller is selling the property in an "as is" condition. Boundaries shown on the accompanying maps are approximate, based on county parcel data. The maps are not to scale. The accuracy of the maps is not guaranteed. Prospective buyers are encouraged to verify fence lines, deeded property lines and acreages using a licensed surveyor at their own expense.

Farm & Forest Brokers
155 Birmingham Road
Centreville, AL 35042
(205) 340-3946
farmandforestbrokers.com/

