

350 Acres | Willow Creek | FM 3179
FM 3179
Huntsville, TX 77340

\$2,623,250
350± Acres
Walker County



MORE INFO ONLINE:
www.homelandprop.com

**350 Acres | Willow Creek | FM 3179
Huntsville, TX / Walker County**

SUMMARY

Address

FM 3179

City, State Zip

Huntsville, TX 77340

County

Walker County

Type

Undeveloped Land

Latitude / Longitude

30.647563 / -95.73933

Acreage

350

Price

\$2,623,250

Property Website

<https://homelandprop.com/property/350-acres-willow-creek-fm-3179-walker-texas/74342/>



MORE INFO ONLINE:
www.homelandprop.com

350 Acres | Willow Creek | FM 3179
Huntsville, TX / Walker County

PROPERTY DESCRIPTION

Discover the ultimate recreational retreat with this expansive +/- 350-acre tract nestled in the heart of Walker County, Texas. Willow Creek offers a unique blend of natural beauty and versatile land use, making it an ideal canvas for your outdoor adventures and hunting excursions.

Spanning +/- 350 acres, Willow Creek has ample space for a variety of recreational activities like hunting, ATVing, hiking, horseback riding, mountain biking and more. Whether you're interested in hunting, hiking, or creating your own private oasis, this land provides the freedom to design your ideal retreat. The diverse habitat of the tract supports a variety of wildlife, including deer, hogs, and turkey with ample cover and natural forage to attract game for your hunting pursuits. Create your own hiking trails or ATV paths to explore the natural beauty and enjoy the great outdoors on your own terms. Willow Creek provides ample options for creating your own rural escape for family gatherings, weekend getaways and more.

Situated just a short drive from Huntsville, College Station and Houston, this remarkable tract provides both seclusion and accessibility. Experience the tranquility of rural Texas while still being conveniently close to essential amenities and services. Don't miss this rare opportunity to own a substantial piece of Walker County's natural landscape.

Utilities: Electricity available, Water available

School District: Huntsville ISD

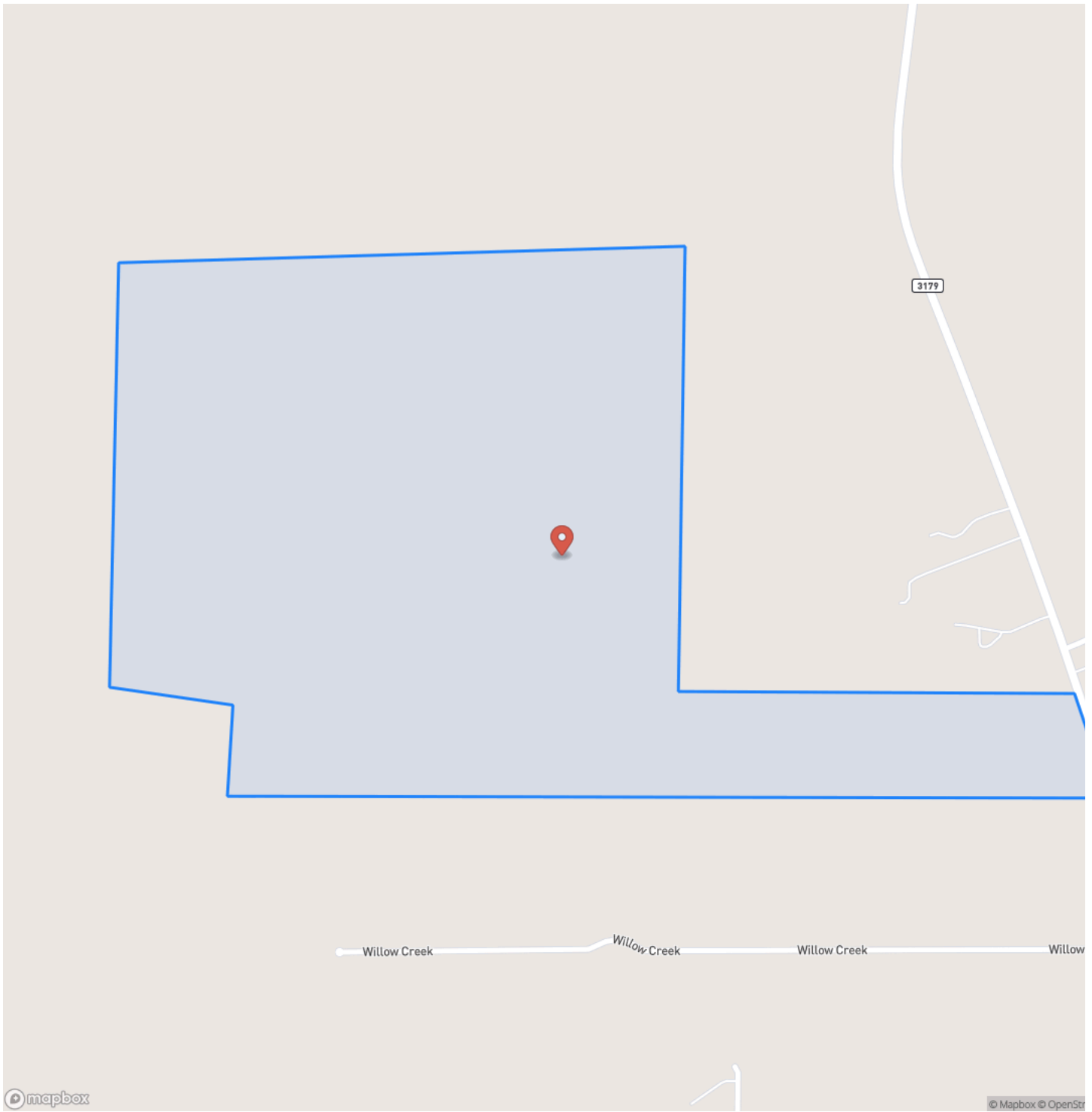


MORE INFO ONLINE:
www.homelandprop.com

350 Acres | Willow Creek | FM 3179
Huntsville, TX / Walker County

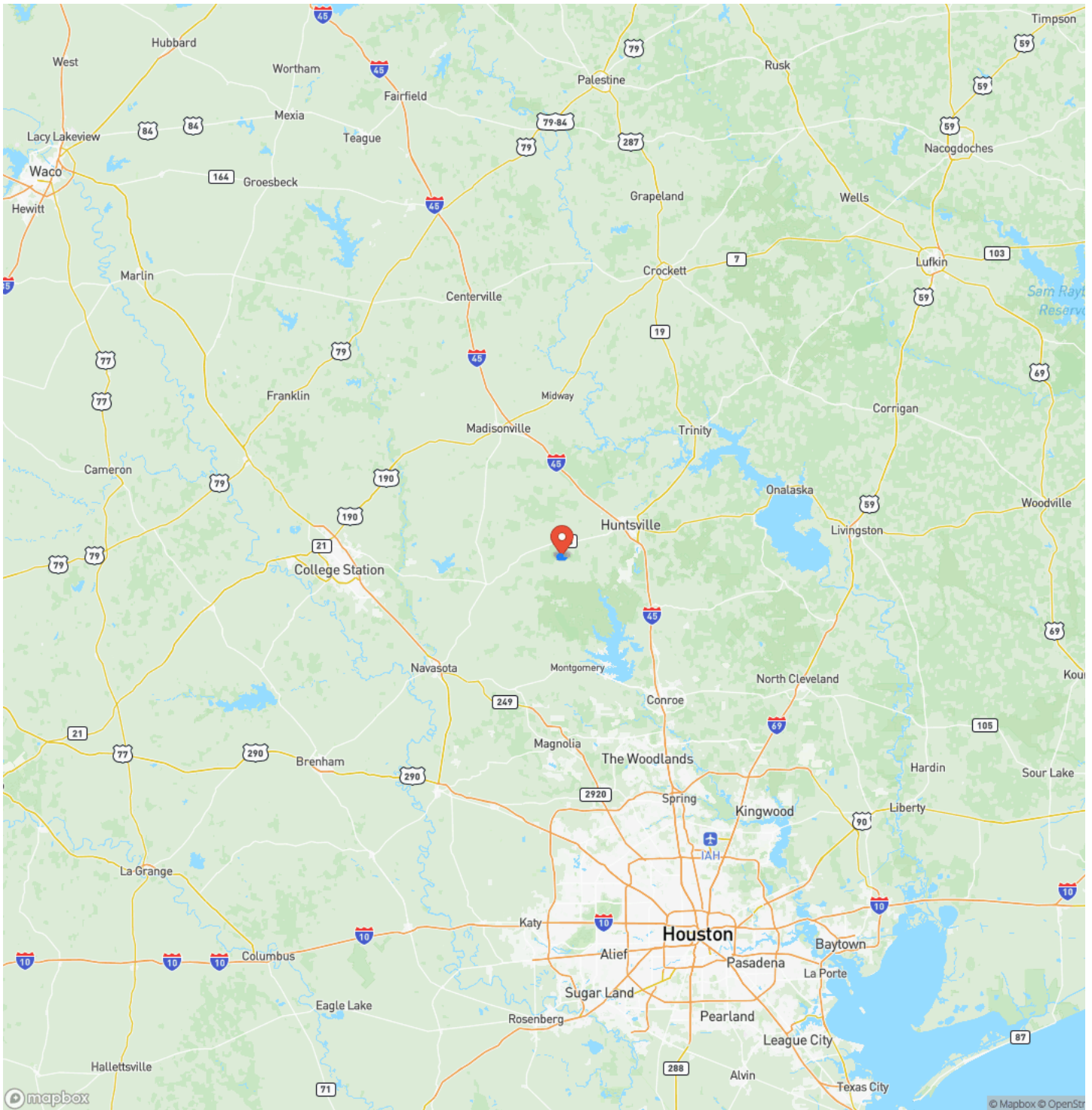


Locator Map



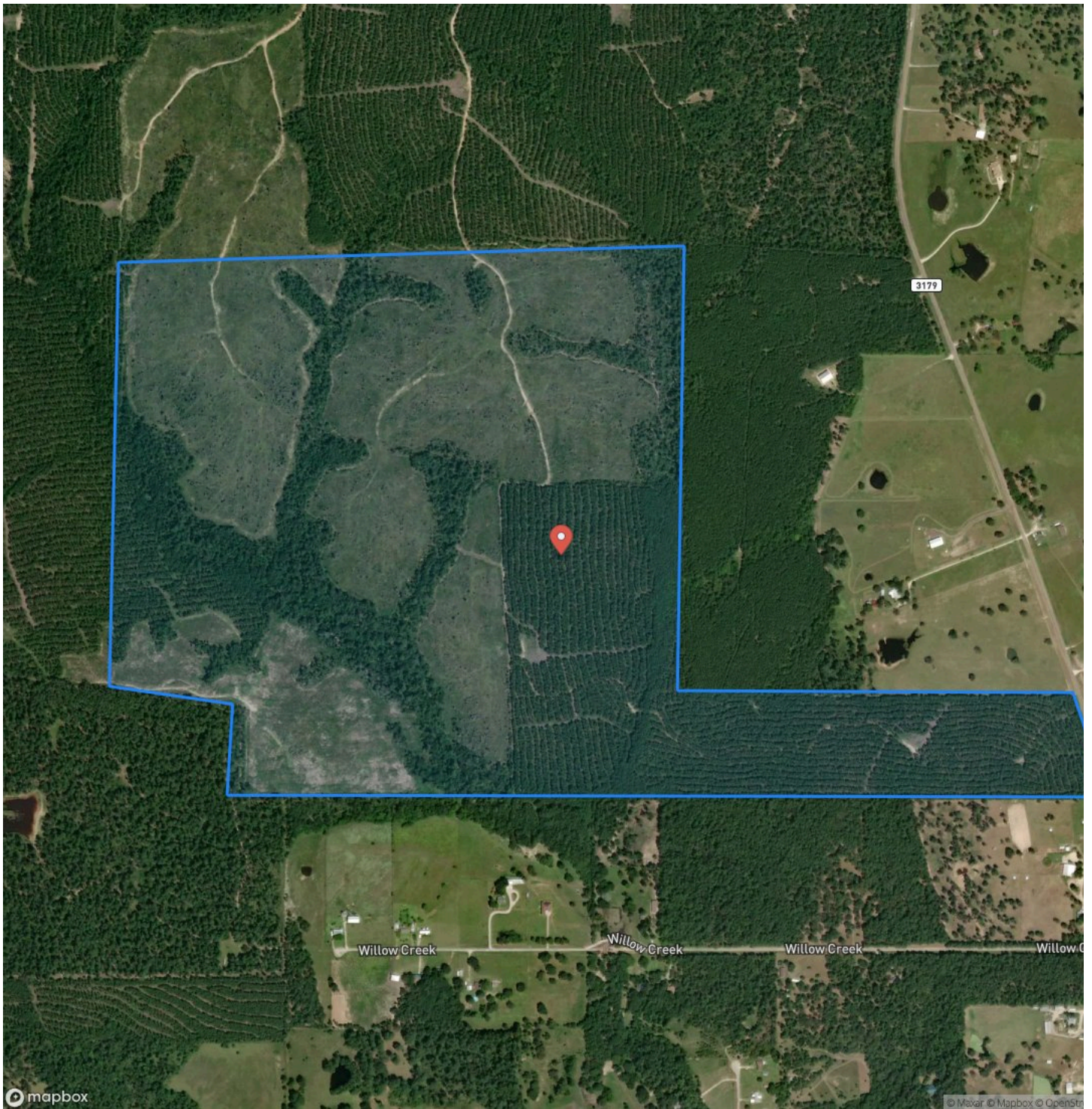
MORE INFO ONLINE:
www.homelandprop.com

Locator Map



350 Acres | Willow Creek | FM 3179
Huntsville, TX / Walker County

Satellite Map



MORE INFO ONLINE:
www.homelandprop.com

DISCLAIMERS

Information in this brochure is provided solely for information purposes and does not constitute an offer to sell or advertise real estate outside the states in which broker or agent licensed. The information presented has been obtained from sources deemed to be reliable, but is not guaranteed or warranted by the agent, broker, or the sellers of these properties. This offering is subject to errors, omissions, prior sale, price change, correction or withdrawal from the market without notice. All references to age, square footage, income, expenses, acreage, carrying capacity, and land classification, etc. are approximate. Prospective buyers are chargeable with and expected to conduct their own independent investigation of the information and the property and to rely only on those results. Sellers reserve the right to accept or reject any and all offers without liability to any buyer or cooperating broker.

Maps are provided for illustration purposes only, the accuracy is not warranted. Parcels on interactive maps are not adjusted to match aerial backgrounds. This information is for reference purposes only and is not a legal document. Data maps contain errors. The seller and seller's agent are making known to all potential buyers that there may be variations between the location of the existing fence lines and the legal description of the deeded property. Seller and seller's agent make no warranties with regard to the location of the fence lines in relationship to the deeded property lines, nor does the Seller make any warranties or representations with regard to the specific acreage contained within the fenced property lines. Seller is selling the property in an "as is" condition, which includes the location of the fences as they exist. Boundaries shown on the accompanying maps are approximate, based on county parcel data. The maps are not to scale. The accuracy of the maps is not guaranteed. Prospective buyers are encouraged to verify fence lines, deeded property lines and acreages using a licensed surveyor at their own expense.



MORE INFO ONLINE:

www.homelandprop.com

HomeLand Properties, Inc.
1600 Normal Park Dr.
Huntsville, TX 77340
(936) 295-2500
www.homelandprop.com



MORE INFO ONLINE:
www.homelandprop.com