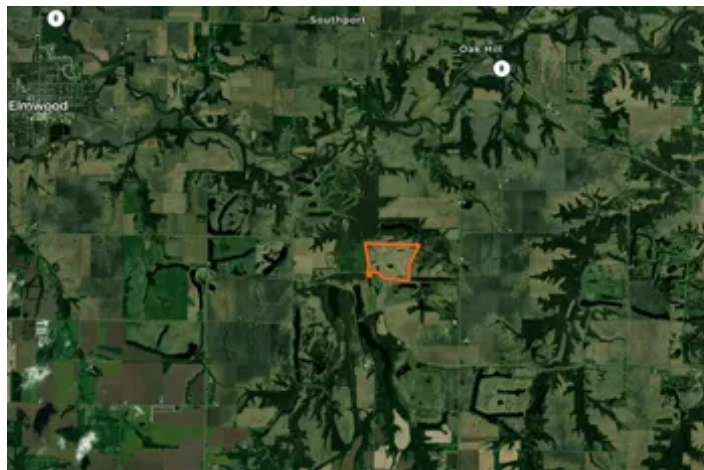


**Peoria County, Illinois 132 Acres of Land For Sale**  
19421 W Bartholomew Ln  
Elmwood, IL 61529

**\$777,443**  
132± Acres  
Peoria County



## Peoria County, Illinois 132 Acres of Land For Sale Elmwood, IL / Peoria County

---

### **SUMMARY**

#### **Address**

19421 W Bartholomew Ln

#### **City, State Zip**

Elmwood, IL 61529

#### **County**

Peoria County

#### **Type**

Farms, Hunting Land, Ranches, Recreational Land, Lakefront

#### **Latitude / Longitude**

40.751174 / -89.886453

#### **Acreage**

132

#### **Price**

\$777,443

#### **Property Website**

<https://landguys.com/property/peoria-county-illinois-132-acres-of-land-for-sale/peoria/illinois/74998/>



## Peoria County, Illinois 132 Acres of Land For Sale

### Elmwood, IL / Peoria County

---

#### **PROPERTY DESCRIPTION**

Nestled amidst tranquil surroundings, this secluded property beckons you with its boundless potential. The land's gentle slopes and verdant pastures invite you to envision your dream home, where you can soak in the tranquility of all this property has to offer.

Its former use as a pasture provides ample space for livestock to graze, ensuring an income stream. With its vast open fields, the land also presents an ideal opportunity for those seeking a prime bird hunting spot. The abundance of wildlife that frequents the area promises thrilling hunting experiences for the avid sportsman.

Adding to the property's allure are its water features, which have played a pivotal role in its past. The current owner has enjoyed successful duck hunting expeditions on the property's water sources. With some enhancements, these water bodies could be transformed into a thriving fishing spot, offering both recreational and economic benefits. The former use of these water sources for livestock grazing further highlights the property's versatility and potential.

#### **KEY FEATURES**

- Livestock pasture opportunities
- Bird Hunting
- Lake
- Possible home site

**Peoria County, Illinois 132 Acres of Land For Sale**  
**Elmwood, IL / Peoria County**

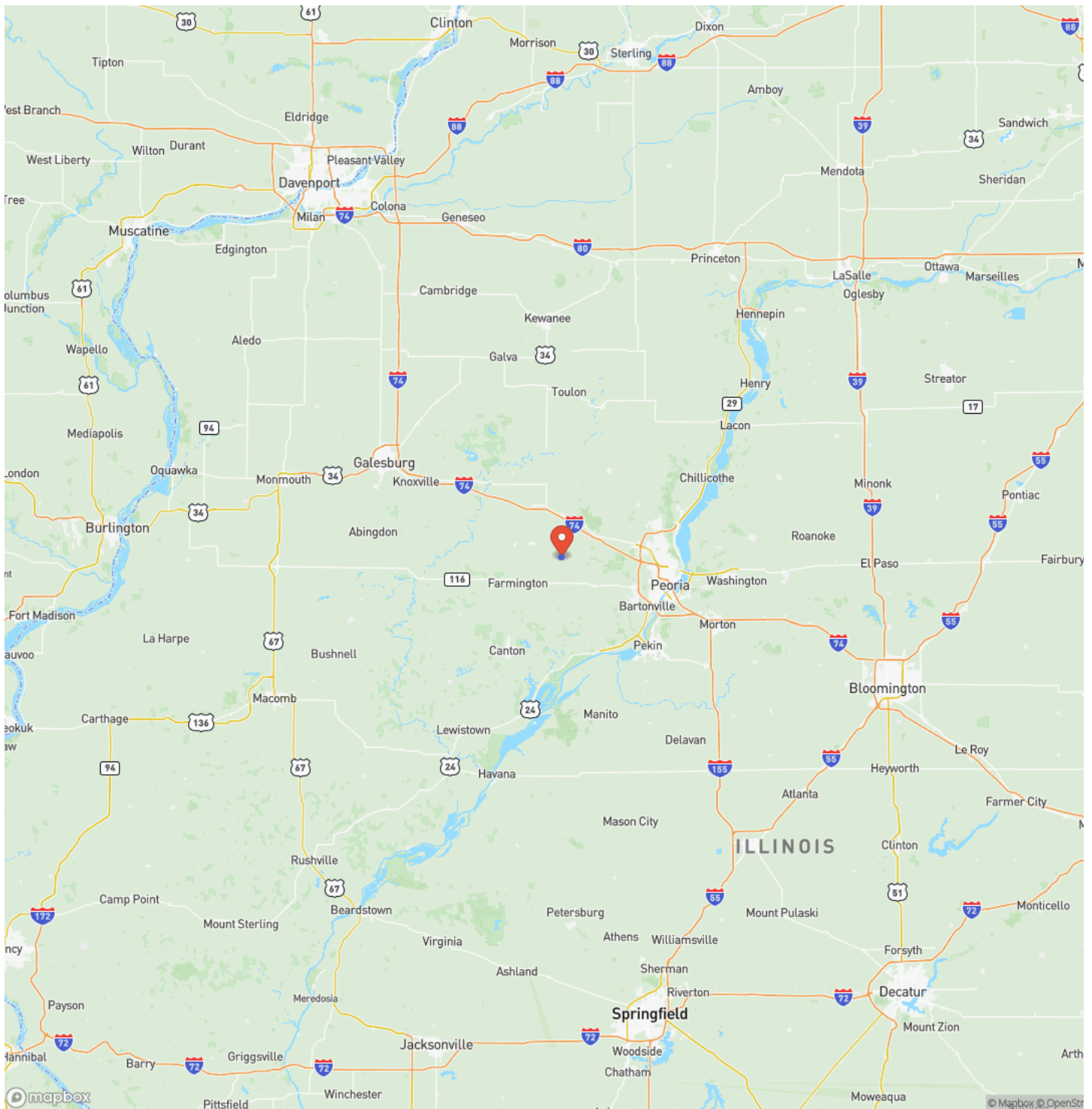
---



## Locator Map



## Locator Map



**MORE INFO ONLINE:**

**www.landguys.com**

## Satellite Map



## Peoria County, Illinois 132 Acres of Land For Sale Elmwood, IL / Peoria County

## LISTING REPRESENTATIVE

**For more information contact:**



### Representative

Andrew Huber

## Mobile

(309) 403-1183

## Email

andrew@landguys.com

**Address**

## City / State / Zip

Brimfield, IL 61517

## NOTES

[illegible]

## This image shows a blank sheet of white paper with horizontal ruling lines. The lines are evenly spaced and run across the width of the page. There are no margins, text, or other markings on the paper.

## **DISCLAIMERS**

Information in this brochure is provided solely for information purposes and does not constitute an offer to sell or advertise real estate outside the states in which broker or agent licensed. The information presented has been obtained from sources deemed to be reliable, but is not guaranteed or warranted by the agent, broker, or the sellers of these properties. This offering is subject to errors, omissions, prior sale, price change, correction or withdrawal from the market without notice. All references to age, square footage, income, expenses, acreage, carrying capacity, and land classification, etc. are approximate. Prospective buyers are chargeable with and expected to conduct their own independent investigation of the information and the property and to rely only on those results. Sellers reserve the right to accept or reject any and all offers without liability to any buyer or cooperating broker.

Maps are provided for illustration purposes only, the accuracy is not warranted. Parcels on interactive maps are not adjusted to match aerial backgrounds. This information is for reference purposes only and is not a legal document. Data maps contain errors. The seller and seller's agent are making known to all potential buyers that there may be variations between the location of the existing fence lines and the legal description of the deeded property. Seller and seller's agent make no warranties with regard to the location of the fence lines in relationship to the deeded property lines, nor does the Seller make any warranties or representations with regard to the specific acreage contained within the fenced property lines. Seller is selling the property in an "as is" condition, which includes the location of the fences as they exist. Boundaries shown on the accompanying maps are approximate, based on county parcel data. The maps are not to scale. The accuracy of the maps is not guaranteed. Prospective buyers are encouraged to verify fence lines, deeded property lines and acreages using a licensed surveyor at their own expense.

---

**LandGuys**  
4331 Conestoga Dr  
Springfield, IL 62711  
(217) 899-1240  
[www.landguys.com](http://www.landguys.com)

---