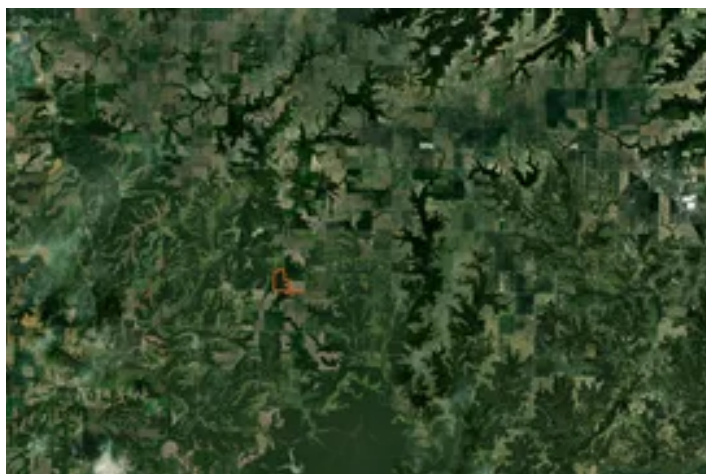


**Adams County, Illinois 105 Acres of Land for Sale with Cabin**  
1340 E 2950TH St  
Clayton, IL 62324

**\$1,150,000**  
105± Acres  
Adams County



## Adams County, Illinois 105 Acres of Land for Sale with Cabin Clayton, IL / Adams County

---

### **SUMMARY**

#### **Address**

1340 E 2950TH St

#### **City, State Zip**

Clayton, IL 62324

#### **County**

Adams County

#### **Type**

Hunting Land, Recreational Land, Residential Property, Single Family

#### **Latitude / Longitude**

39.95126 / -90.944231

#### **Dwelling Square Feet**

1000

#### **Bedrooms / Bathrooms**

2 / 1

#### **Acreage**

105

#### **Price**

\$1,150,000

#### **Property Website**

<https://landguys.com/property/adams-county-illinois-105-acres-of-land-for-sale-with-cabin-adams-illinois/97015/>





## **Adams County, Illinois 105 Acres of Land for Sale with Cabin Clayton, IL / Adams County**

---

### **PROPERTY DESCRIPTION**

#### **Secluded hardwood acreage with a cabin, strong wildlife, and practical access in Adams County, IL!**

Tucked away in the heart of Adams County, this 105-acre property offers the kind of privacy and character that is getting harder to find. Beautiful hardwood timber, multiple food plot locations, and three-sided access make this a highly functional hunting and recreational tract. The 2 bed, 1 bath cabin provides a comfortable place to stay during season, while the machine shed offers ample storage for equipment and gear. With a strong population of whitetail and turkey, this property is set up to enjoy from day one.

### **KEY FEATURES**

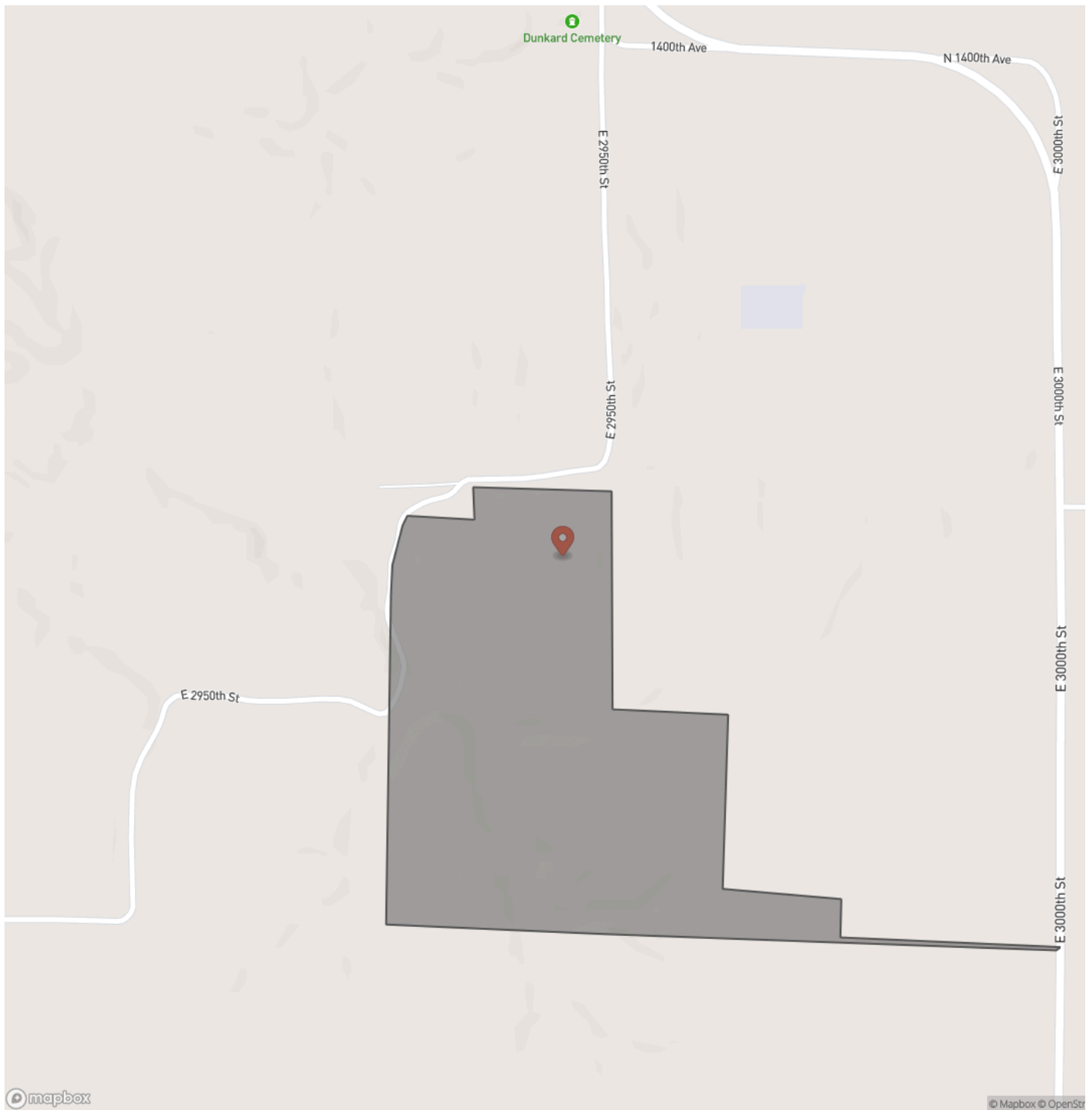
- Beautiful hardwood timber throughout
- Three-sided access
- Multiple food plot locations
- Strong whitetail and turkey population
- Cozy 2 bed, 1 bath cabin with approx. 1,000 sq ft of living space
- 580 sq ft basement
- Machine shed ideal for equipment and storage
- Extremely secluded setting

**Adams County, Illinois 105 Acres of Land for Sale with Cabin**  
**Clayton, IL / Adams County**

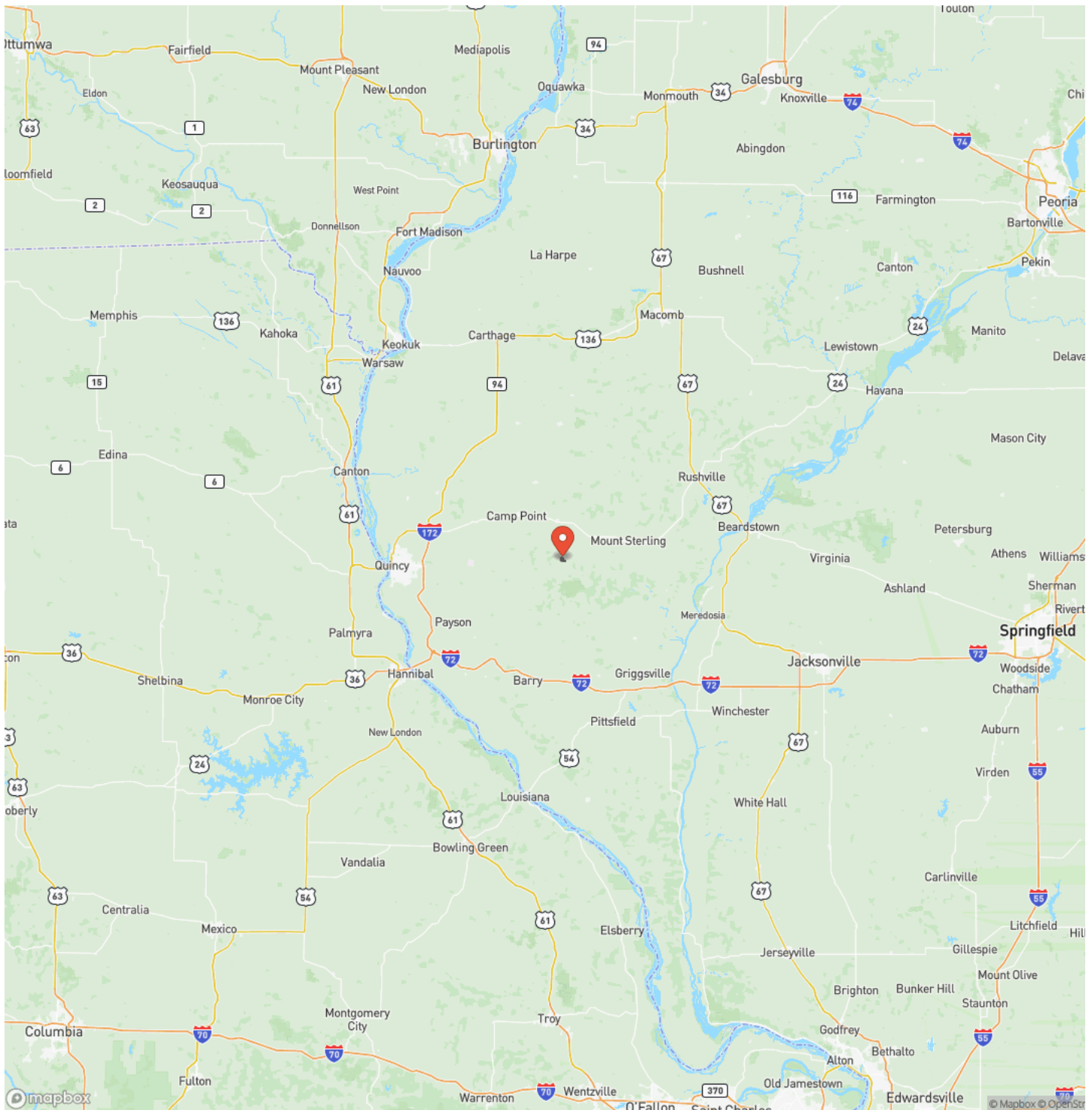
---



## Locator Map



## Locator Map



**MORE INFO ONLINE:**

**www.landguys.com**



## Satellite Map



## Adams County, Illinois 105 Acres of Land for Sale with Cabin Clayton, IL / Adams County

## LISTING REPRESENTATIVE

**For more information contact:**



### Representative

Jesse Stay

## Mobile

(217) 779-2793

## Email

jesse.stay@landguys.com

### Address

City / State / Zip

## NOTES

[illegible]



## This image shows a blank sheet of white paper with horizontal ruling lines. The lines are evenly spaced and extend across the width of the page. There are no margins, text, or other markings on the paper.

## **DISCLAIMERS**

Information in this brochure is provided solely for information purposes and does not constitute an offer to sell or advertise real estate outside the states in which broker or agent licensed. The information presented has been obtained from sources deemed to be reliable, but is not guaranteed or warranted by the agent, broker, or the sellers of these properties. This offering is subject to errors, omissions, prior sale, price change, correction or withdrawal from the market without notice. All references to age, square footage, income, expenses, acreage, carrying capacity, and land classification, etc. are approximate. Prospective buyers are chargeable with and expected to conduct their own independent investigation of the information and the property and to rely only on those results. Sellers reserve the right to accept or reject any and all offers without liability to any buyer or cooperating broker.

Maps are provided for illustration purposes only, the accuracy is not warranted. Parcels on interactive maps are not adjusted to match aerial backgrounds. This information is for reference purposes only and is not a legal document. Data maps contain errors. The seller and seller's agent are making known to all potential buyers that there may be variations between the location of the existing fence lines and the legal description of the deeded property. Seller and seller's agent make no warranties with regard to the location of the fence lines in relationship to the deeded property lines, nor does the Seller make any warranties or representations with regard to the specific acreage contained within the fenced property lines. Seller is selling the property in an "as is" condition, which includes the location of the fences as they exist. Boundaries shown on the accompanying maps are approximate, based on county parcel data. The maps are not to scale. The accuracy of the maps is not guaranteed. Prospective buyers are encouraged to verify fence lines, deeded property lines and acreages using a licensed surveyor at their own expense.

---

**LandGuys**  
4331 Conestoga Dr  
Springfield, IL 62711  
(217) 899-1240  
[www.landguys.com](http://www.landguys.com)

---