

0 Airshaft Rd - Westmoreland - Apollo 2.3 +/- Acres
0 Airshaft Rd
Apollo, PA 15613

\$44,900
2.3± Acres
Westmoreland County



Boundary



0 Airshaft Rd - Westmoreland - Apollo 2.3 +/- Acres
Apollo, PA / Westmoreland County

SUMMARY

Address

0 Airshaft Rd

City, State Zip

Apollo, PA 15613

County

Westmoreland County

Type

Lot, Undeveloped Land, Recreational Land, Hunting Land

Latitude / Longitude

40.583382 / -79.620096

Acreage

2.3

Price

\$44,900

Property Website

<https://www.mossoakproperties.com/property/0-airshaft-rd-westmoreland-apollo-2-3-acres/westmoreland/pennsylvania/97071/>



0 Airshaft Rd - Westmoreland - Apollo 2.3 +/- Acres
Apollo, PA / Westmoreland County

PROPERTY DESCRIPTION

2.3± Wooded Homesite - Private Lot in Kiski Area School District

2.3± wooded acres on Airshaft Road in Westmoreland County offering the rural privacy and outdoor character Mossy Oak buyers appreciate. The property features a mature timber backdrop, natural seclusion, and strong homesite potential with a well onsite and utilities nearby. Enjoy quiet country living with wildlife, elbow room, and a peaceful setting minutes from Northmoreland Park. Everyday conveniences are close, and Pittsburgh remains an accessible commute. A great opportunity to build your home, cabin, or weekend retreat in a desirable area of Western Pennsylvania.

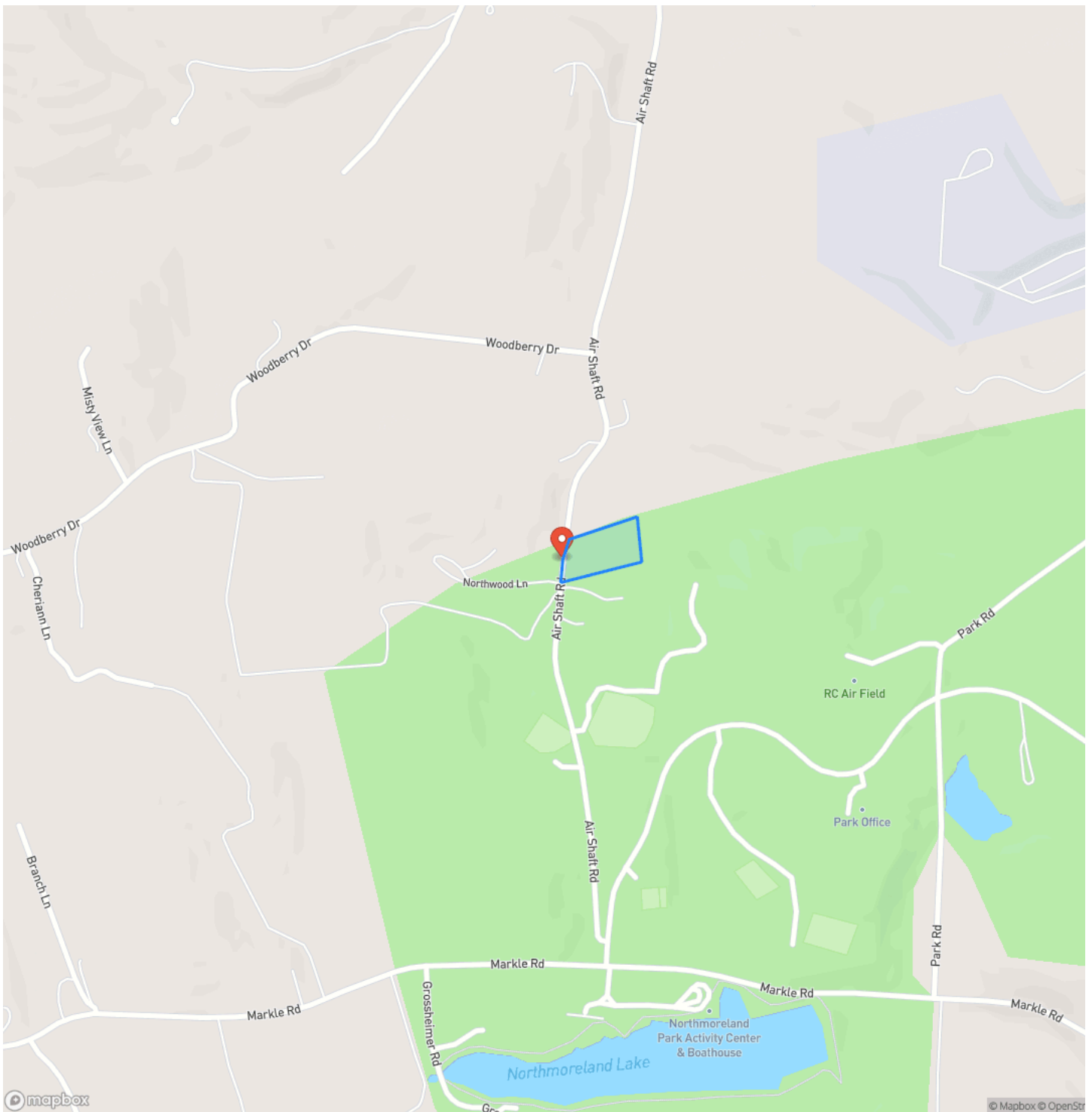
PROPERTY HIGHLIGHTS:

- 2.3± wooded acres
- Private homesite setting
- Well onsite
- Utilities nearby
- Mature timber and natural privacy
- Wildlife and rural character
- Kiski Area School District
- Minutes to Northmoreland Park
- Close to amenities and services
- Reasonable commute to Pittsburgh
- Westmoreland County
- Airshaft Road frontage

0 Airshaft Rd - Westmoreland - Apollo 2.3 +/- Acres
Apollo, PA / Westmoreland County

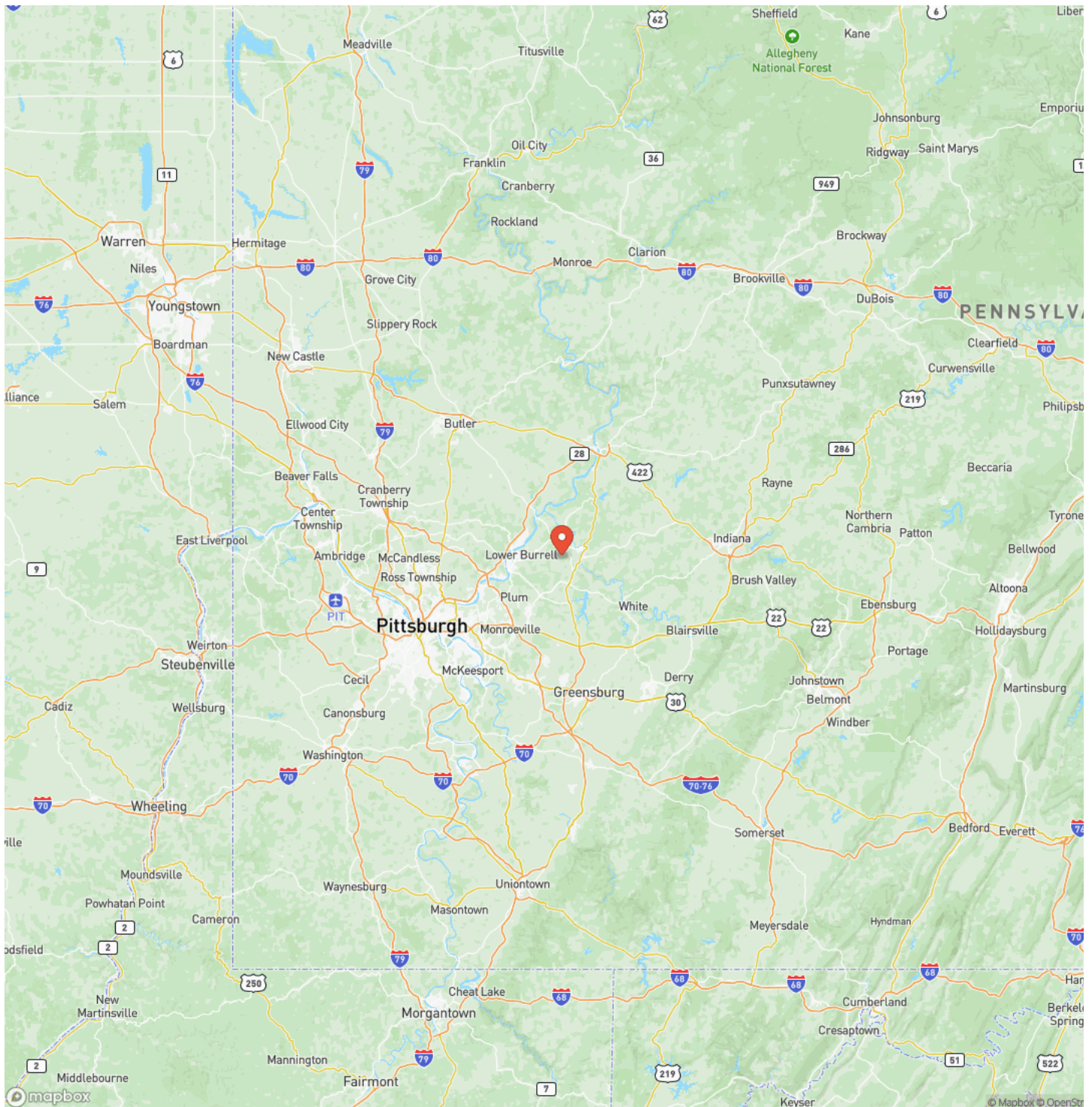


Locator Map

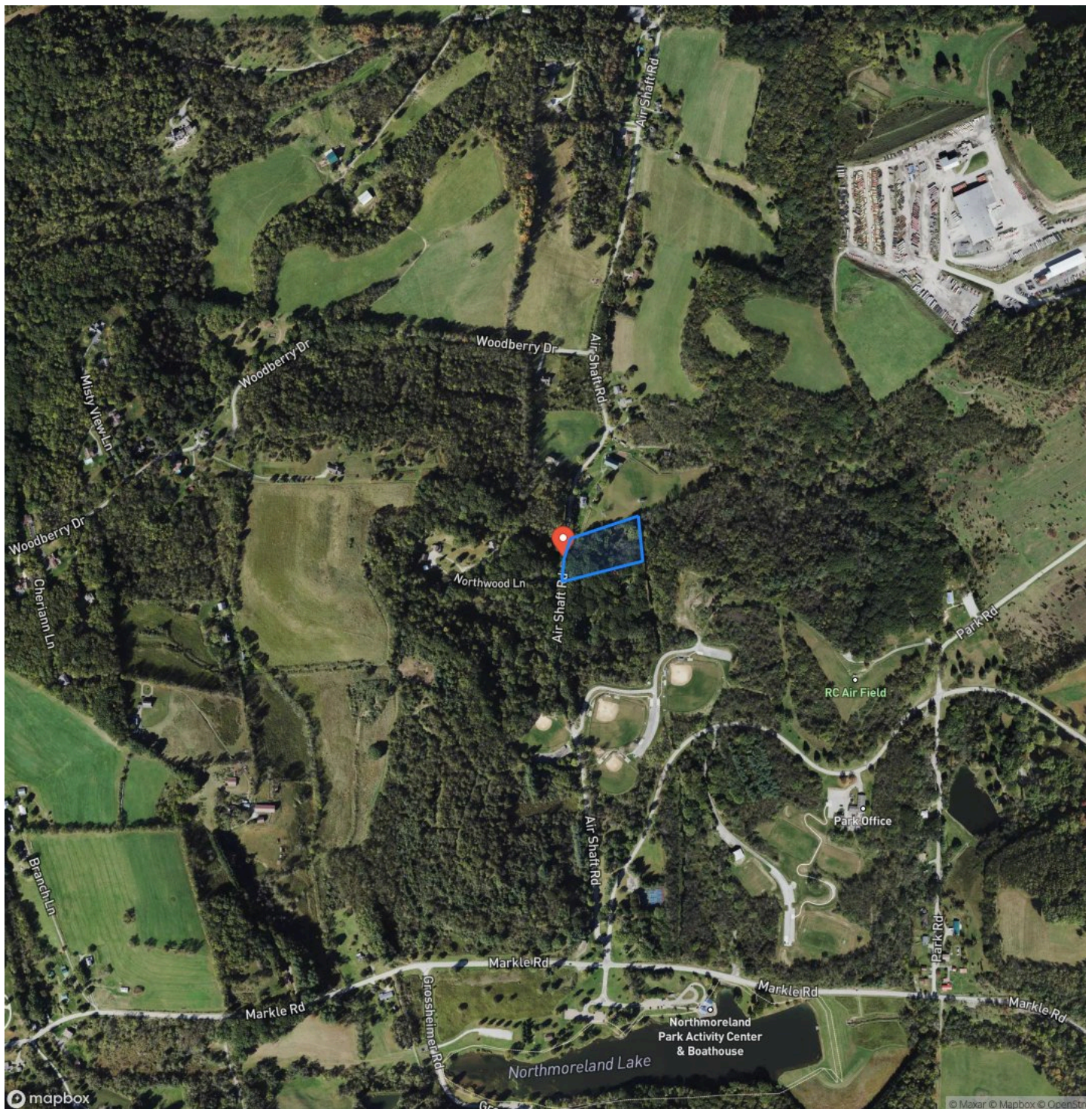


0 Airshaft Rd - Westmoreland - Apollo 2.3 +/- Acres
Apollo, PA / Westmoreland County

Locator Map



Satellite Map



0 Airshaft Rd - Westmoreland - Apollo 2.3 +/- Acres
Apollo, PA / Westmoreland County

LISTING REPRESENTATIVE

For more information contact:



Representative

Logan Dominick

Mobile

(724) 875-4759

Office

(724) 678-1232

Email

Ldominick@mossyoakproperties.com

Address

511 Skyline Drive

City / State / Zip

Belle Vernon, PA 15012

NOTES



MORE INFO ONLINE:

mossyoakproperties.com

This image shows a single sheet of white paper with horizontal ruling lines. The lines are evenly spaced and run across the width of the page. There are no margins, text, or other markings on the paper.



MORE INFO ONLINE:
mossyoakproperties.com

DISCLAIMERS

Information in this brochure is provided solely for information purposes and does not constitute an offer to sell or advertise real estate outside the states in which broker or agent licensed. The information presented has been obtained from sources deemed to be reliable, but is not guaranteed or warranted by the agent, broker, or the sellers of these properties. This offering is subject to errors, omissions, prior sale, price change, correction or withdrawal from the market without notice. All references to age, square footage, income, expenses, acreage, carrying capacity, and land classification, etc. are approximate. Prospective buyers are chargeable with and expected to conduct their own independent investigation of the information and the property and to rely only on those results. Sellers reserve the right to accept or reject any and all offers without liability to any buyer or cooperating broker.

Maps are provided for illustration purposes only, the accuracy is not warranted. Parcels on interactive maps are not adjusted to match aerial backgrounds. This information is for reference purposes only and is not a legal document. Data maps contain errors. The seller and seller's agent are making known to all potential buyers that there may be variations between the location of the existing fence lines and the legal description of the deeded property. Seller and seller's agent make no warranties with regard to the location of the fence lines in relationship to the deeded property lines, nor does the Seller make any warranties or representations with regard to the specific acreage contained within the fenced property lines. Seller is selling the property in an "as is" condition, which includes the location of the fences as they exist. Boundaries shown on the accompanying maps are approximate, based on county parcel data. The maps are not to scale. The accuracy of the maps is not guaranteed. Prospective buyers are encouraged to verify fence lines, deeded property lines and acreages using a licensed surveyor at their own expense.

Mossy Oak Properties Pennsylvania Land Professionals

511 Skyline Dr.
Belle Vernon, PA 15012
(724) 678-1232
mossyOakproperties.com

