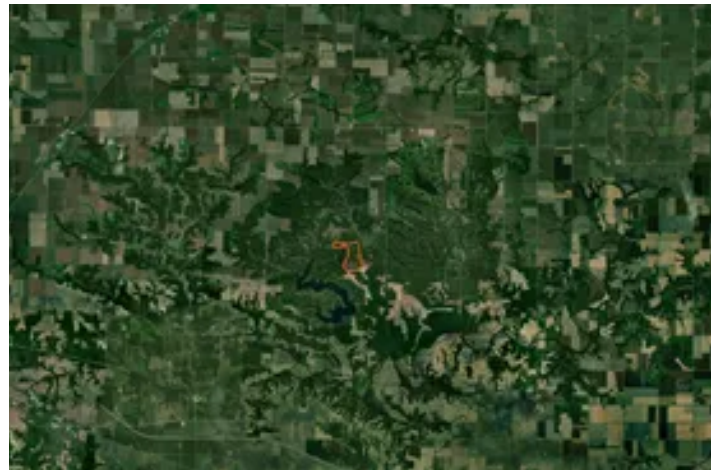
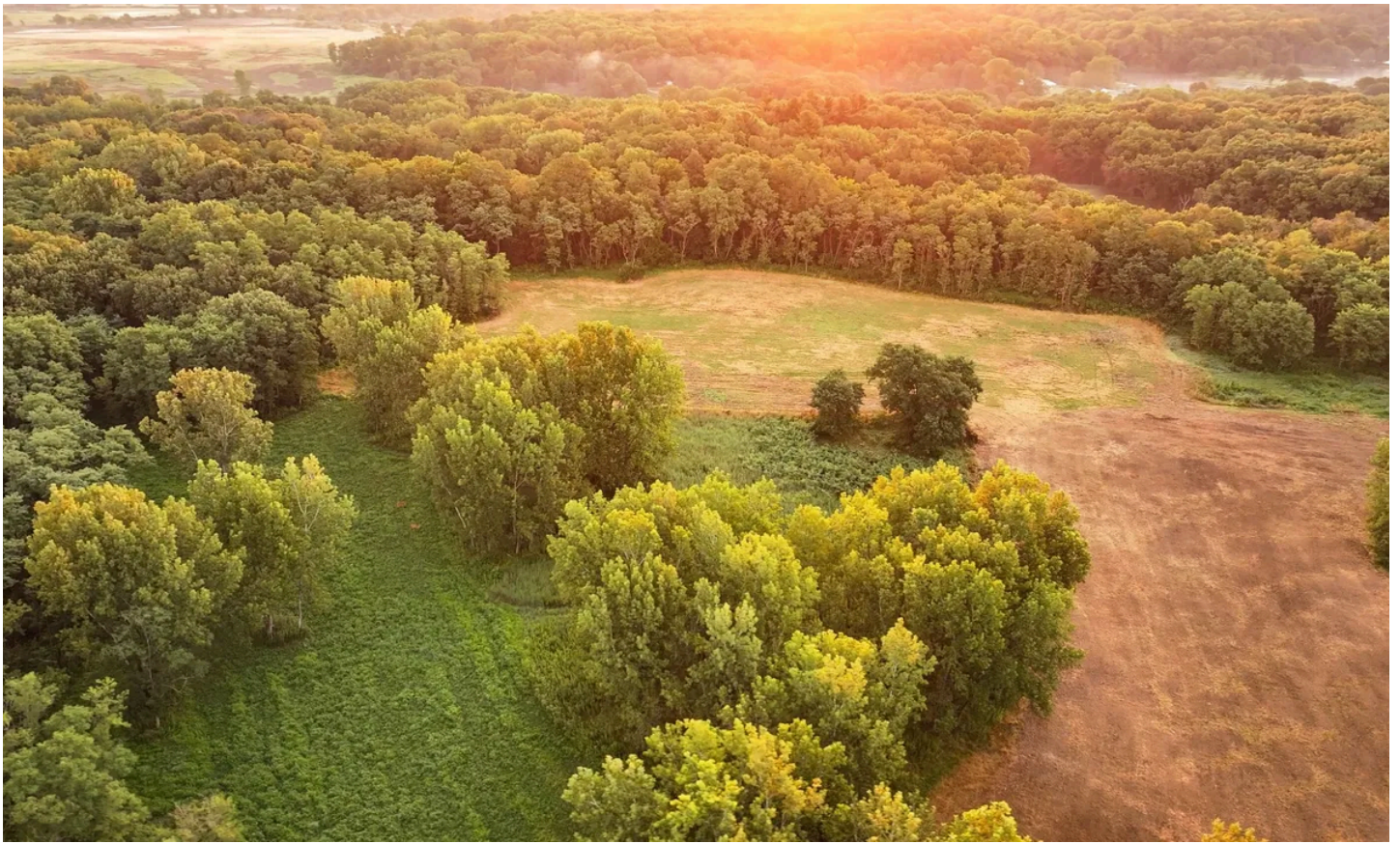


Knox County, Illinois 235 Acres of Land for Sale
1669 Sherwood Rd
Dahinda, IL 61428

\$1,639,125
235± Acres
Knox County



Knox County, Illinois 235 Acres of Land for Sale

Dahinda, IL / Knox County

SUMMARY

Address

1669 Sherwood Rd

City, State Zip

Dahinda, IL 61428

County

Knox County

Type

Hunting Land, Recreational Land, Timberland

Latitude / Longitude

40.973993 / -90.117664

Acreage

235

Price

\$1,639,125

Property Website

<https://landguys.com/property/knox-county-illinois-235-acres-of-land-for-sale/knox/illinois/89036/>



Knox County, Illinois 235 Acres of Land for Sale

Dahinda, IL / Knox County

PROPERTY DESCRIPTION

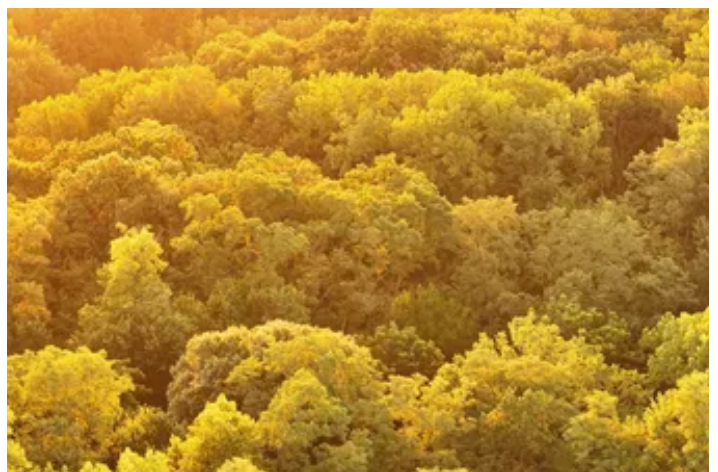
Unparalleled Trophy Property

Nestled in the heart of prime hunting country, this recreational farm is a sportsman's paradise. The property boasts meticulously maintained trails and loaded with wildlife food plots planted in Alfalfa, clover, chicory, brassicas, turnips, radishes and more. The waterfowl hunting on the interior ponds is excellent with fishing opportunities. This property is only ½ mile from Knox County College's 700 acres with NO hunting allowed which creates an ideal setup for rut hunting when mature bucks travel in search of does.

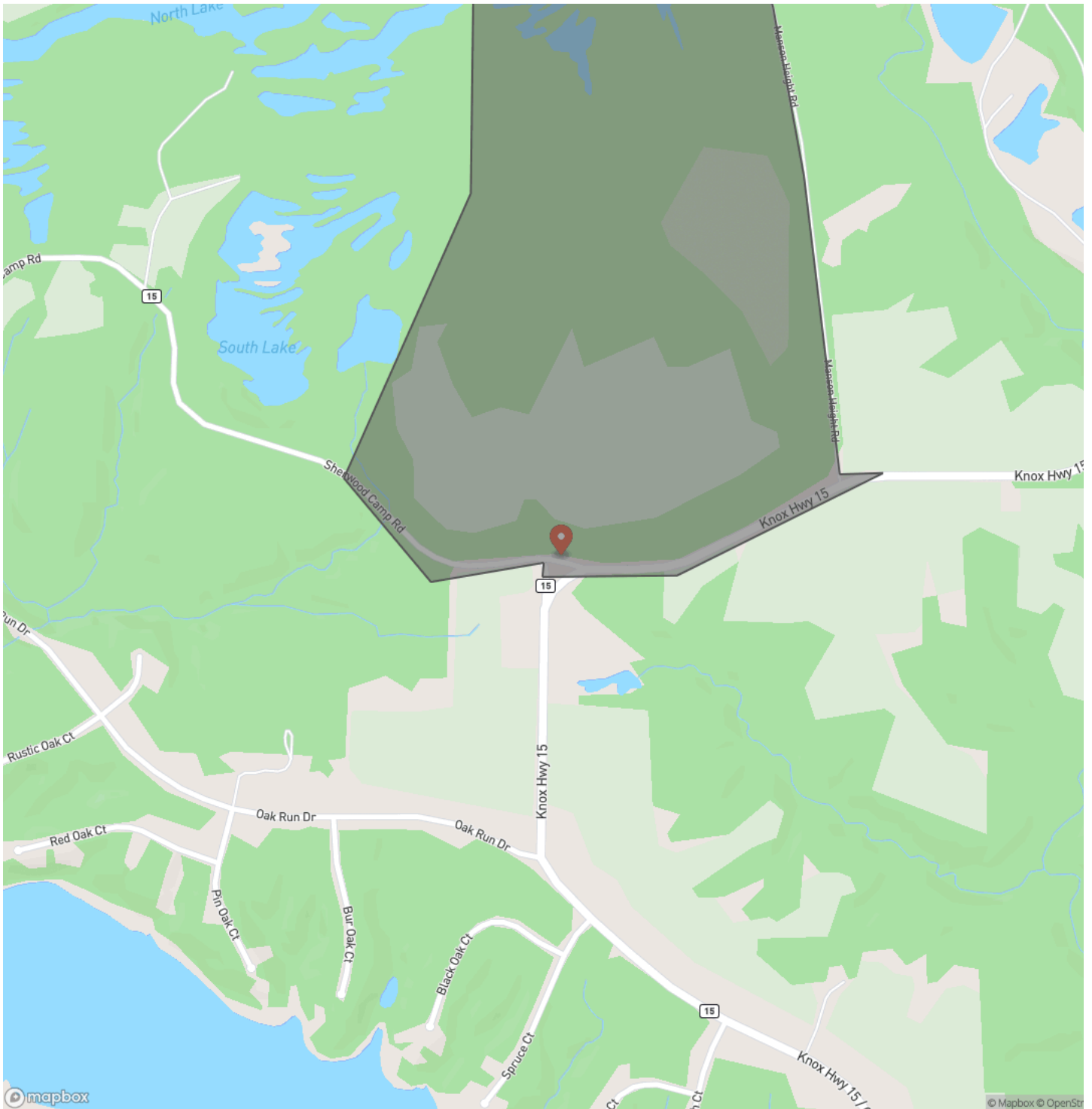
KEY FEATURES

- Exceptional Trophy Deer
- Waterfowl
- Fishing
- Turkey
- Miles of trails
- Loaded with wildlife food plots
- Amazing access throughout acreage
- Low hunting pressure neighbors
- Close to 700+ acres of no hunting acreage
- West neighbors (DragonFly Lakes) there is NO hunting

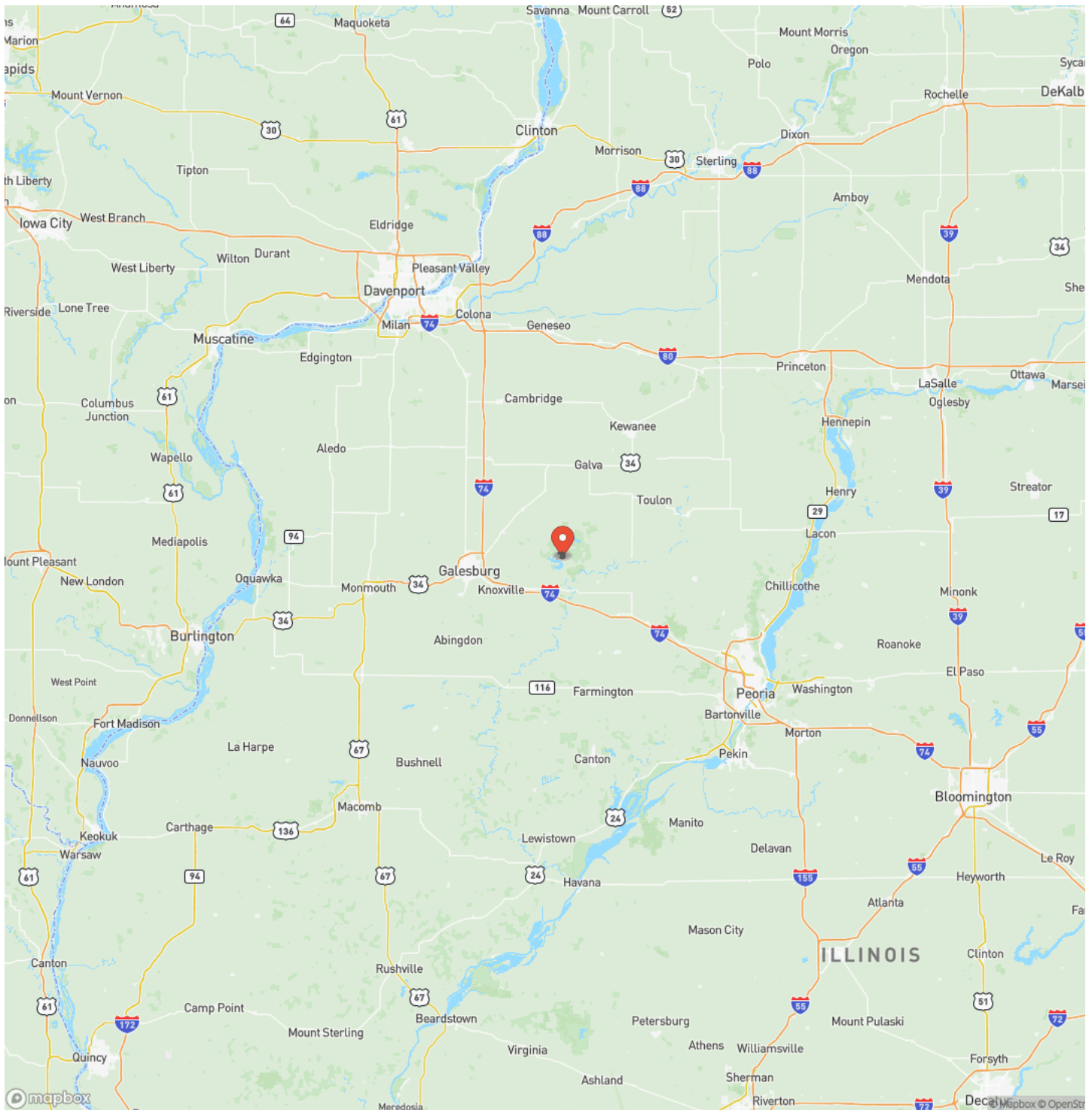
Knox County, Illinois 235 Acres of Land for Sale
Dahinda, IL / Knox County



Locator Map



Locator Map



Satellite Map



Knox County, Illinois 235 Acres of Land for Sale

Dahinda, IL / Knox County

LISTING REPRESENTATIVE

For more information contact:



Representative

Andrew Huber

Mobile

(309) 403-1183

Email

andrew@landguys.com

Address

City / State / Zip

Brimfield, IL 61517

NOTES

[illegible]

[illegible]

DISCLAIMERS

Information in this brochure is provided solely for information purposes and does not constitute an offer to sell or advertise real estate outside the states in which broker or agent licensed. The information presented has been obtained from sources deemed to be reliable, but is not guaranteed or warranted by the agent, broker, or the sellers of these properties. This offering is subject to errors, omissions, prior sale, price change, correction or withdrawal from the market without notice. All references to age, square footage, income, expenses, acreage, carrying capacity, and land classification, etc. are approximate. Prospective buyers are chargeable with and expected to conduct their own independent investigation of the information and the property and to rely only on those results. Sellers reserve the right to accept or reject any and all offers without liability to any buyer or cooperating broker.

Maps are provided for illustration purposes only, the accuracy is not warranted. Parcels on interactive maps are not adjusted to match aerial backgrounds. This information is for reference purposes only and is not a legal document. Data maps contain errors. The seller and seller's agent are making known to all potential buyers that there may be variations between the location of the existing fence lines and the legal description of the deeded property. Seller and seller's agent make no warranties with regard to the location of the fence lines in relationship to the deeded property lines, nor does the Seller make any warranties or representations with regard to the specific acreage contained within the fenced property lines. Seller is selling the property in an "as is" condition, which includes the location of the fences as they exist. Boundaries shown on the accompanying maps are approximate, based on county parcel data. The maps are not to scale. The accuracy of the maps is not guaranteed. Prospective buyers are encouraged to verify fence lines, deeded property lines and acreages using a licensed surveyor at their own expense.

LandGuys
4331 Conestoga Dr
Springfield, IL 62711
(217) 899-1240
www.landguys.com
