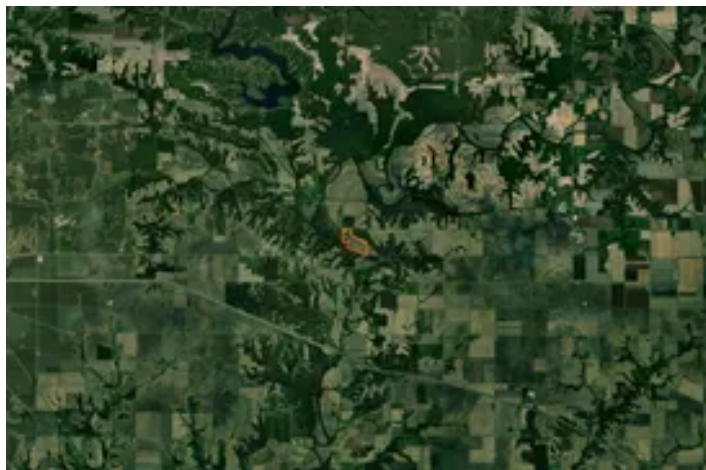


Knox County, Illinois 85 Acres of Land for Sale
00 N Knox Rd
Dahinda, IL 61428

\$722,500
85± Acres
Knox County



Knox County, Illinois 85 Acres of Land for Sale

Dahinda, IL / Knox County

SUMMARY

Address

00 N Knox Rd

City, State Zip

Dahinda, IL 61428

County

Knox County

Type

Farms, Hunting Land, Recreational Land

Latitude / Longitude

40.917356 / -90.098809

Acreage

85

Price

\$722,500

Property Website

<https://landguys.com/property/knox-county-illinois-85-acres-of-land-for-sale/knox/illinois/97208/>



Knox County, Illinois 85 Acres of Land for Sale

Dahinda, IL / Knox County

PROPERTY DESCRIPTION

Income, Recreation & Build Site Overlooking Spoon River

This 85-acre property offers a rare combination of strong agricultural income and recreational opportunity. With productive tillable ground, excellent access, and scenic frontage along the Spoon River, it checks the boxes for both investment and enjoyment. The recreational component includes quality hunting, fishing, and kayaking on the river, while the elevated building site provides a beautiful view of the Spoon River and the timbered bluffs beyond. Utilities are already in place at the lot line, making this property well-positioned for future plans.

KEY FEATURES

- 85 acres with a strong balance of income and recreation
- 69 FSA tillable acres with a 127.5 average P.I.
- Excellent building site overlooking the Spoon River and surrounding timbered bluffs
- Hunting and fishing opportunities with river frontage suitable for kayaking
- Electric and fiber optics available at the lot line
- Great access for ease of use and long-term value

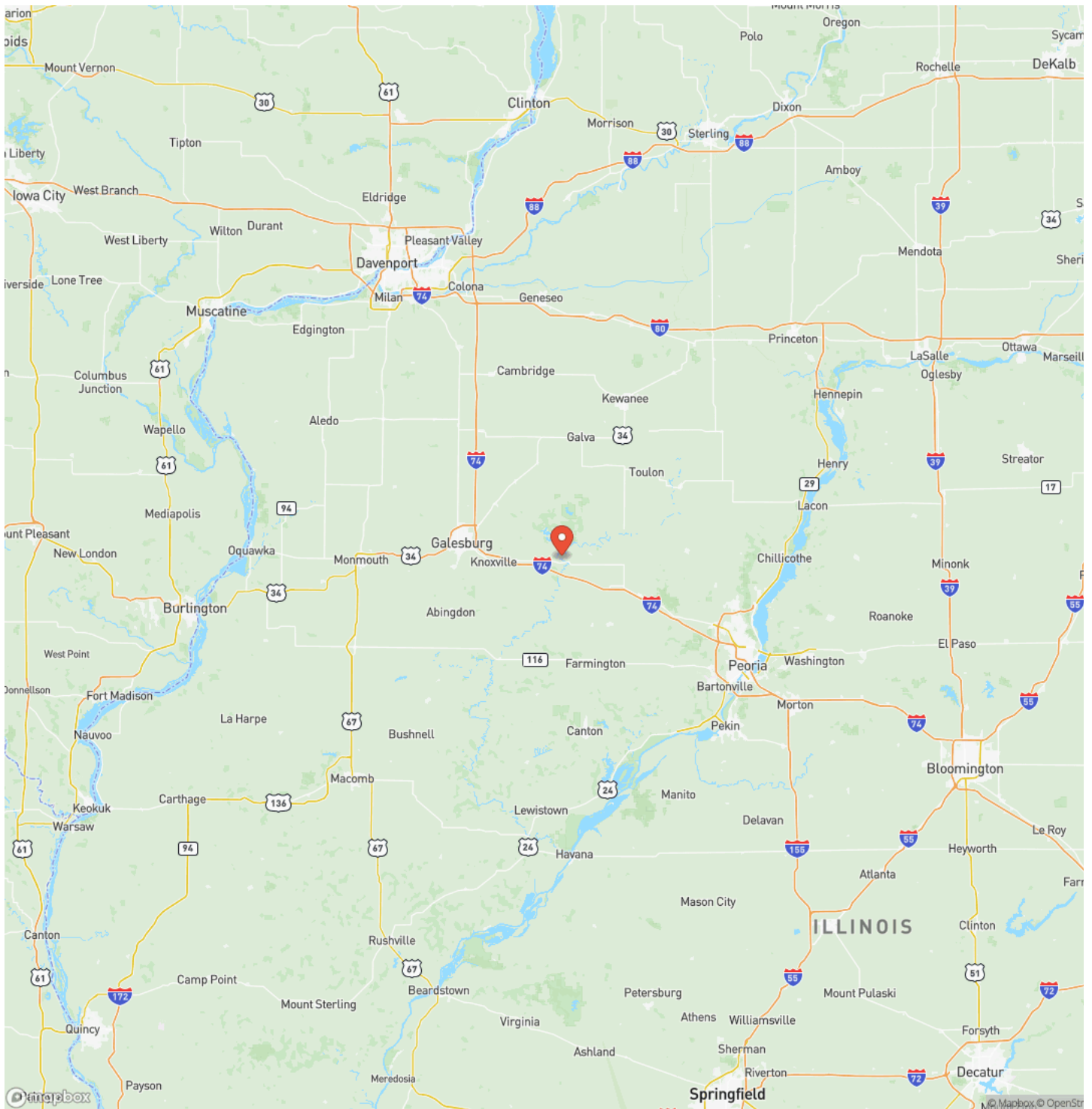
Knox County, Illinois 85 Acres of Land for Sale
Dahinda, IL / Knox County



Locator Map



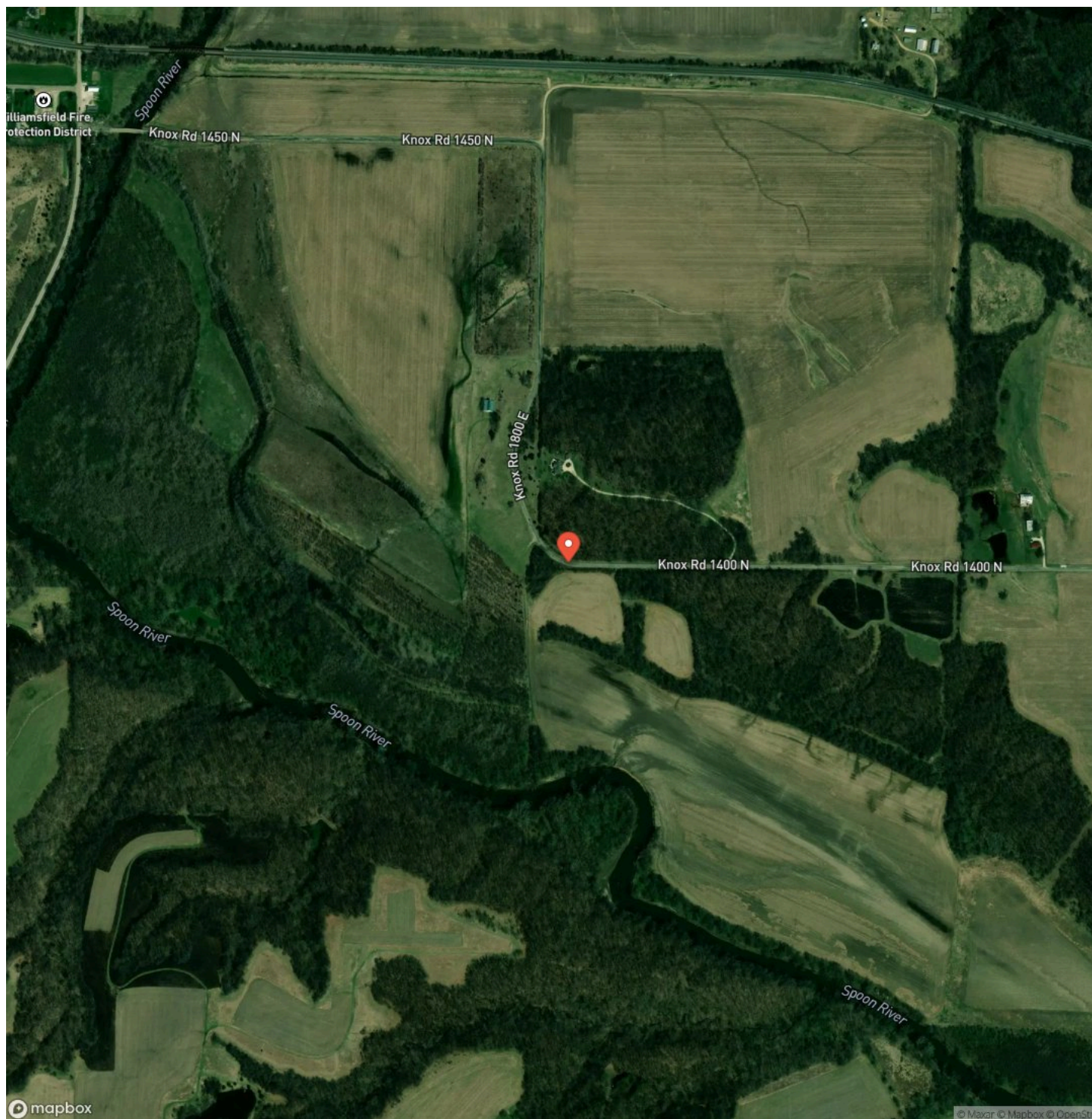
Locator Map



MORE INFO ONLINE:

www.landguys.com

Satellite Map



Knox County, Illinois 85 Acres of Land for Sale Dahinda, IL / Knox County

LISTING REPRESENTATIVE

For more information contact:



Representative

Andrew Huber

Mobile

(309) 403-1183

Email

andrew@landguys.com

Address

City / State / Zip

Brimfield, IL 61517

NOTES

[illegible]

This image shows a full page of white paper with horizontal ruling lines. The lines are evenly spaced and extend across the width of the page. There are no margins, text, or other markings on the paper.

DISCLAIMERS

Information in this brochure is provided solely for information purposes and does not constitute an offer to sell or advertise real estate outside the states in which broker or agent licensed. The information presented has been obtained from sources deemed to be reliable, but is not guaranteed or warranted by the agent, broker, or the sellers of these properties. This offering is subject to errors, omissions, prior sale, price change, correction or withdrawal from the market without notice. All references to age, square footage, income, expenses, acreage, carrying capacity, and land classification, etc. are approximate. Prospective buyers are chargeable with and expected to conduct their own independent investigation of the information and the property and to rely only on those results. Sellers reserve the right to accept or reject any and all offers without liability to any buyer or cooperating broker.

Maps are provided for illustration purposes only, the accuracy is not warranted. Parcels on interactive maps are not adjusted to match aerial backgrounds. This information is for reference purposes only and is not a legal document. Data maps contain errors. The seller and seller's agent are making known to all potential buyers that there may be variations between the location of the existing fence lines and the legal description of the deeded property. Seller and seller's agent make no warranties with regard to the location of the fence lines in relationship to the deeded property lines, nor does the Seller make any warranties or representations with regard to the specific acreage contained within the fenced property lines. Seller is selling the property in an "as is" condition, which includes the location of the fences as they exist. Boundaries shown on the accompanying maps are approximate, based on county parcel data. The maps are not to scale. The accuracy of the maps is not guaranteed. Prospective buyers are encouraged to verify fence lines, deeded property lines and acreages using a licensed surveyor at their own expense.

LandGuys
4331 Conestoga Dr
Springfield, IL 62711
(217) 899-1240
www.landguys.com
