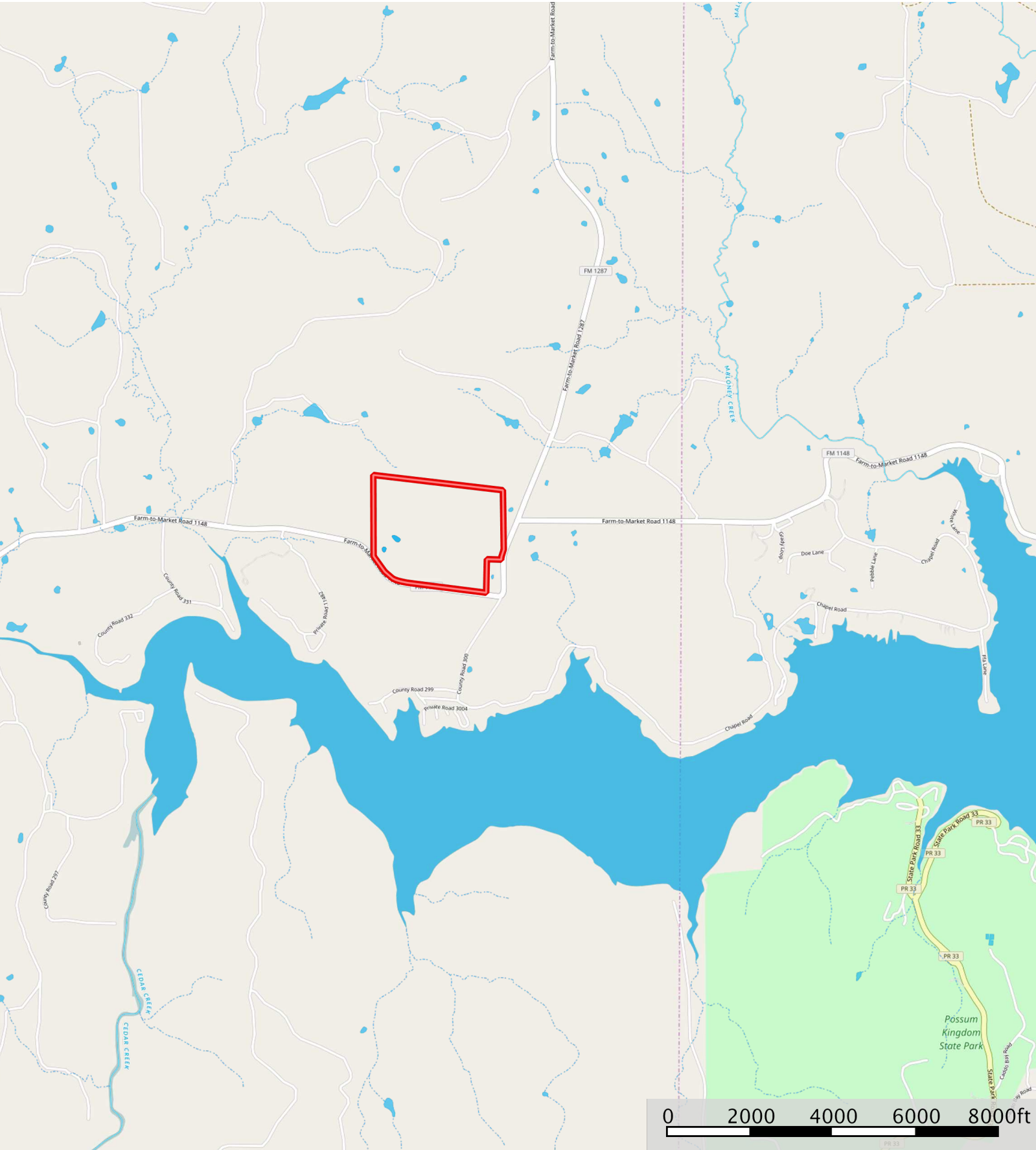
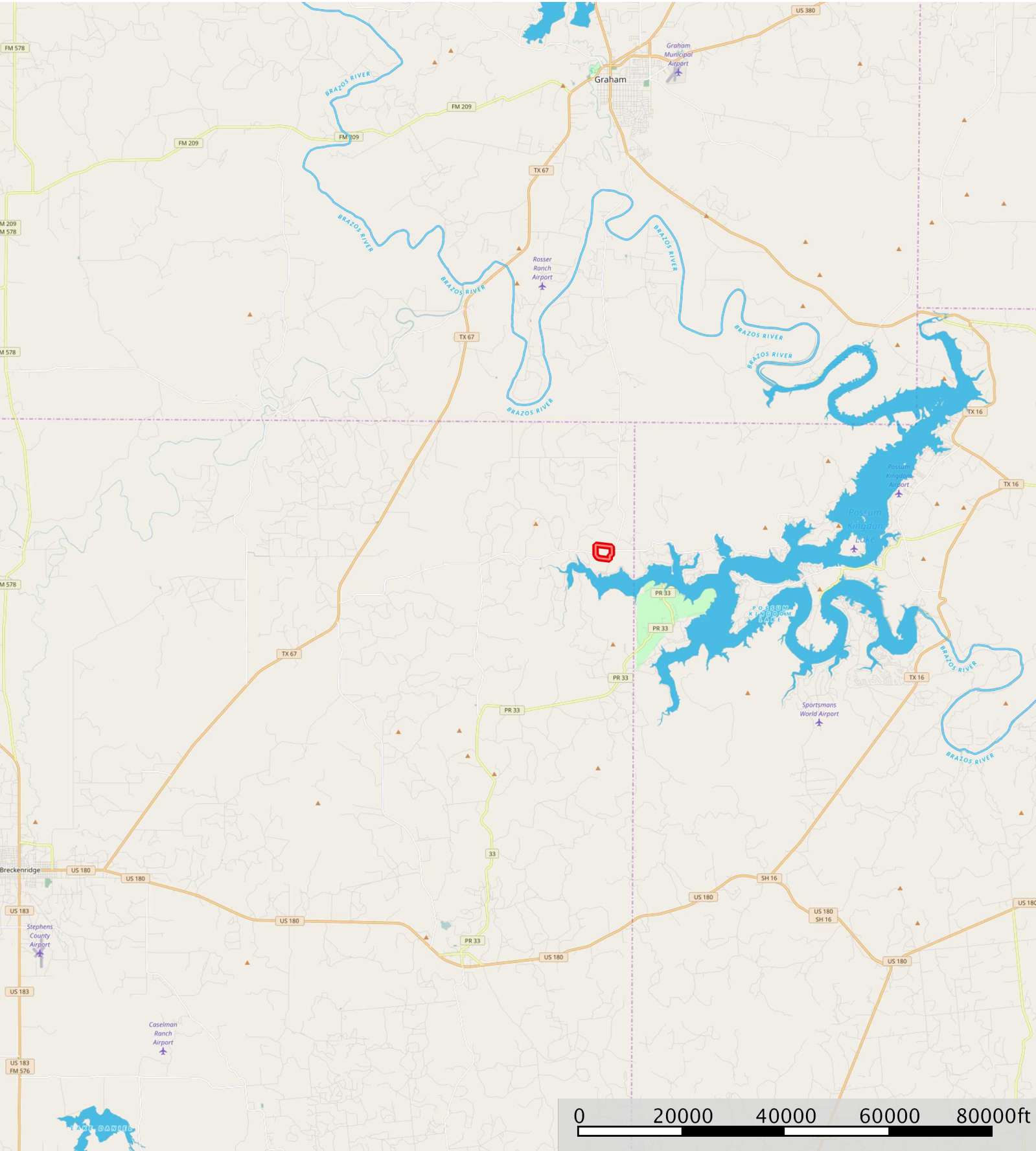


122ac-Possum Peak
Stephens County, Texas, 122.116 AC +/-



- Boundary
- Pond / Tank
- Stream Intermittent
- River/Creek
- Water Body

122ac-Possum Peak
Stephens County, Texas, 122.116 AC +/-



- Boundary
- Pond / Tank
- Stream Intermittent
- River/Creek
- Water Body

