

30 Acres Harris Co. GA
2013
Hamilton, GA 31811

\$325,000
30± Acres
Harris County



30 Acres Harris Co. GA
Hamilton, GA / Harris County

SUMMARY

Address

2013

City, State Zip

Hamilton, GA 31811

County

Harris County

Type

Recreational Land, Undeveloped Land, Hunting Land

Latitude / Longitude

32.72501 / -84.81267

Acreage

30

Price

\$325,000

Property Website

<https://farmandforestbrokers.com/property/30-acres-harris-co-ga-harris-georgia/84353/>



30 Acres Harris Co. GA Hamilton, GA / Harris County

PROPERTY DESCRIPTION

30 Acres of Prime Land – Harris County, GA | Creek Frontage, Timber, and Wildlife Haven

Located off Winfree Road | Over 2,000 Feet of Road Frontage

Welcome to a rare opportunity in beautiful **Harris County, Georgia**—30 pristine acres featuring a unique blend of natural beauty, investment potential, and dream home possibilities.

Land Highlights:

- **30 Acres** of mixed-use recreational and residential potential
- Over **2,000 feet of paved road frontage** on quiet Winfree Road
- Thriving **pine plantation**—ideal for future thinning and timber revenue
- More than **2,100 feet of Mulberry Creek frontage** with scenic views
- Mature **white oak hardwoods** create a lush and diverse landscape
- A **small feeder creek** adds to the property's water features

Development Potential:

- Gently rolling topography with multiple **premium homesite locations**
- Stunning **creekside views and elevated building spots**
- Power and road access in place—ready for your vision

Wildlife & Recreation:

- Loaded with **deer and turkey sign**—a hunter's paradise
- Excellent habitat mix of hardwoods, pines, and water sources
- Quiet and private, yet close to conveniences in Harris County

Whether you're looking for a private estate site, recreational getaway, or an investment in Georgia timberland, this property delivers exceptional value and beauty.

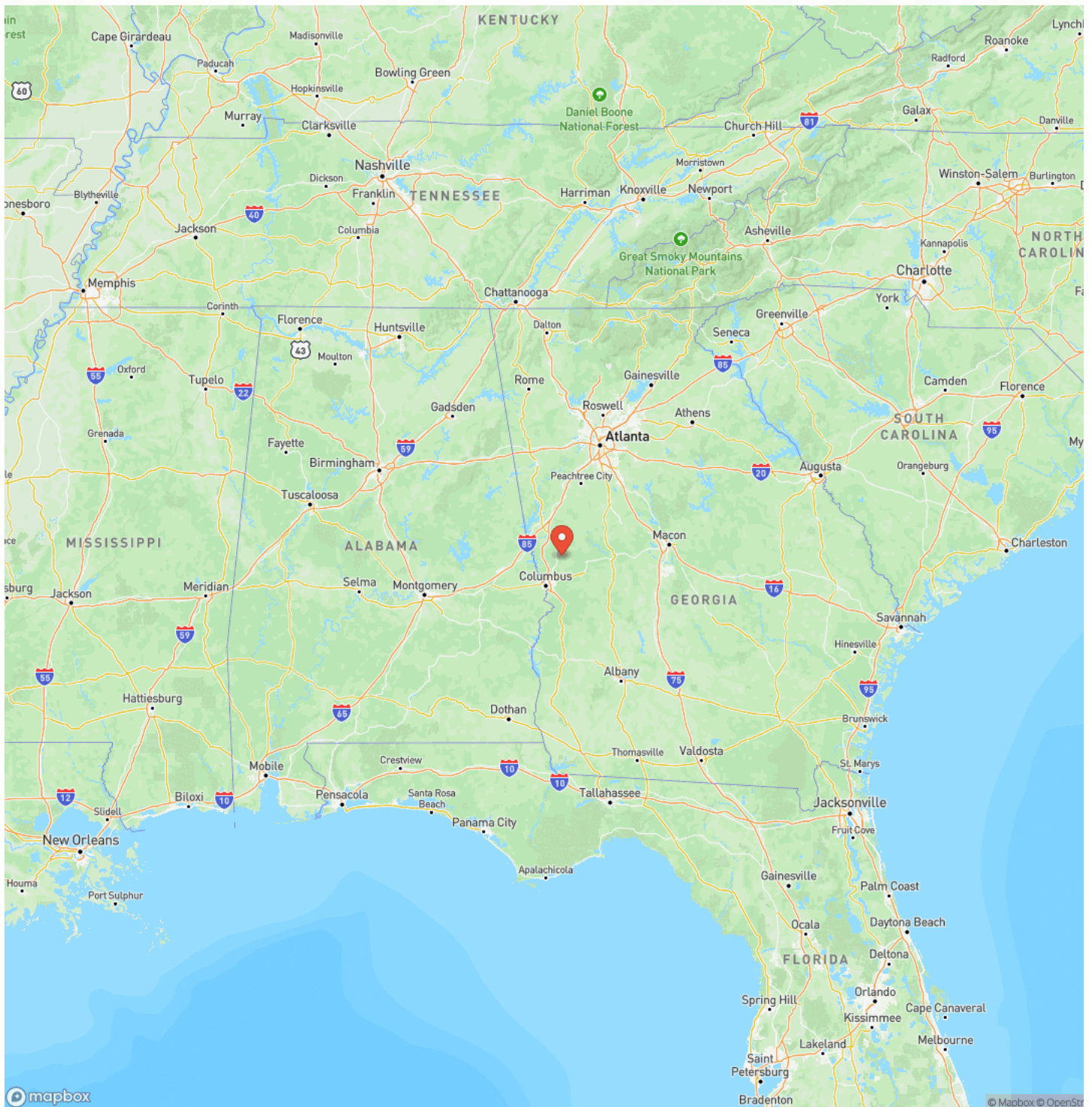
Contact Tyler Briggs [706-593-3639](tel:706-593-3639) today to schedule a private tour of this one-of-a-kind tract in Harris County.



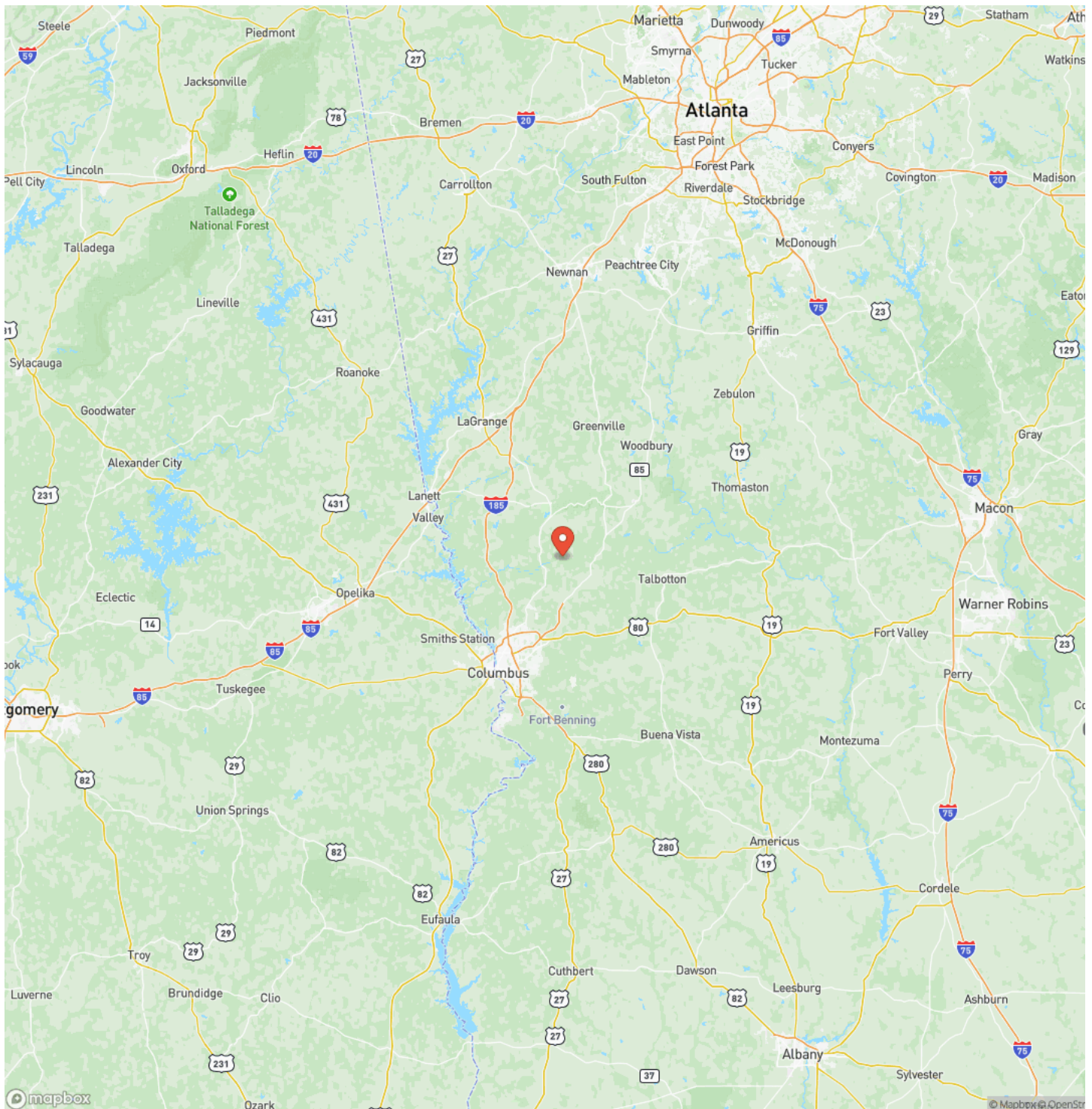
30 Acres Harris Co. GA
Hamilton, GA / Harris County



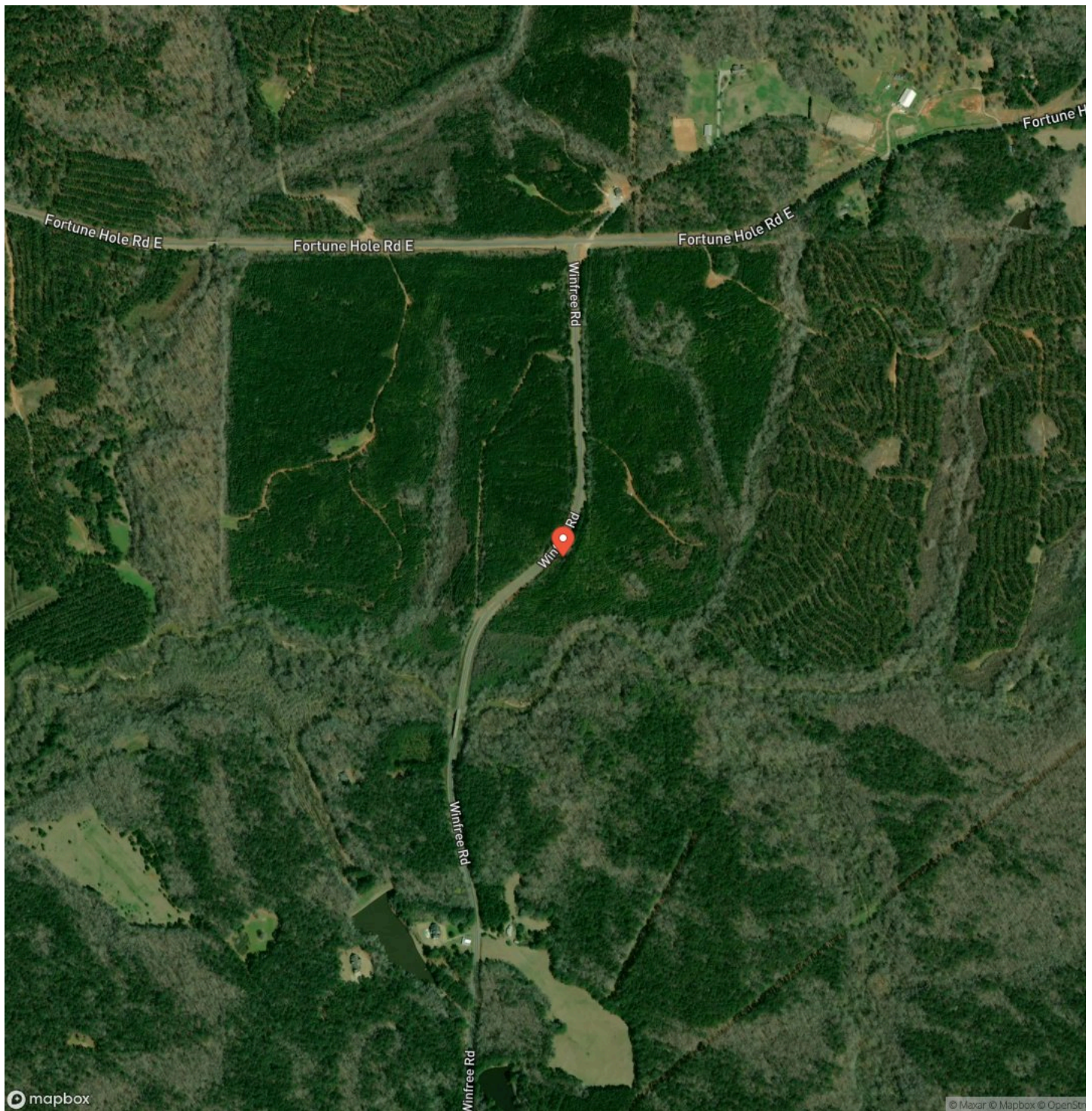
Locator Map



Locator Map



Satellite Map



30 Acres Harris Co. GA
Hamilton, GA / Harris County

LISTING REPRESENTATIVE

For more information contact:



Representative

Tyler Briggs

Mobile

(706) 593-3639

Email

tyler@farmandforestbrokers.com

Address

City / State / Zip

NOTES

[illegible]

MORE INFO ONLINE:

farmandforestbrokers.com/

NOTES

This image shows a single sheet of white paper with horizontal blue ruling lines. The lines are evenly spaced and run across the width of the page. There are no margins, text, or other markings on the paper.

DISCLAIMERS

Information in this brochure is provided solely for information purposes and does not constitute an offer to sell or advertise real estate outside the states in which broker or agent is licensed. The information presented has been obtained from sources deemed to be reliable, but is not guaranteed or warranted by the agent, broker, or the sellers of these properties. This offering is subject to errors, omissions, prior sale, price change, correction or withdrawal from the market without notice. All references to age, square footage, income, expenses, acreage, carrying capacity, and land classification, etc. are derived from sources believed to be accurate, but are approximate. Prospective buyers are chargeable with and expected to conduct their own independent investigation of the information and the property and to rely only on those results. Sellers reserve the right to accept or reject any and all offers without liability to any buyer or cooperating broker.

Maps are provided for illustration purposes only, the accuracy is not warranted. Parcels on interactive maps are not adjusted to match aerial backgrounds. This information is for reference purposes only and is not a legal document. Data maps contain errors. The seller and seller's agent are making known to all potential buyers that there may be variations between the location of the existing boundary lines and the legal description of the deeded property. Seller and seller's agent make no warranties with regard to the location of the boundary lines in relationship to the deeded property lines, nor does the Seller make any warranties or representations with regard to the specific acreage contained within the property lines. Seller is selling the property in an "as is" condition. Boundaries shown on the accompanying maps are approximate, based on county parcel data. The maps are not to scale. The accuracy of the maps is not guaranteed. Prospective buyers are encouraged to verify fence lines, deeded property lines and acreages using a licensed surveyor at their own expense.

Farm & Forest Brokers
155 Birmingham Road
Centreville, AL 35042
(205) 340-3946
farmandforestbrokers.com/

