

21 Acres | T-5 | FM 1746  
FM 1746  
Town Bluff, TX 77660

**\$133,350**  
21± Acres  
Tyler County



**MORE INFO ONLINE:**  
[www.homelandprop.com](http://www.homelandprop.com)



**21 Acres | T-5 | FM 1746**  
**Town Bluff, TX / Tyler County**

---

**SUMMARY**

**Address**

FM 1746

**City, State Zip**

Town Bluff, TX 77660

**County**

Tyler County

**Type**

Undeveloped Land, Hunting Land, Recreational Land

**Latitude / Longitude**

30.7928798328 / -94.1858720687

**Acreage**

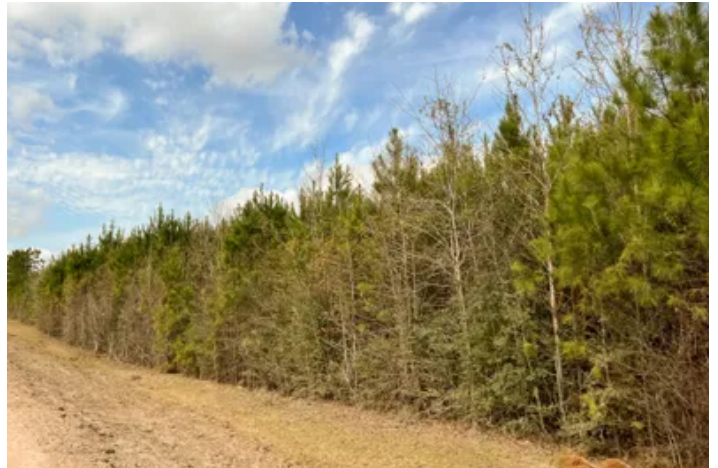
21

**Price**

\$133,350

**Property Website**

<https://homelandprop.com/property/21-acres-t-5-fm-1746-tyler-texas/73129/>



**MORE INFO ONLINE:**  
[www.homelandprop.com](http://www.homelandprop.com)

21 Acres | T-5 | FM 1746  
Town Bluff, TX / Tyler County

---

**PROPERTY DESCRIPTION**

---

**First time open market offering with historical forestry ownership! Varying aged pine with mixed hardwoods and various SMZ's (streamside management zones) for diversity. Electricity and water readily available along paved FM 1746 frontage. Easy conversion to pasture with electricity readily available at the road. Investment, recreation, or homesite! Located just west of the famous Neches River overlook below B.A. Steinhagen Dam B. Close enough for varying water recreation activities.**

---

*\*Photos are not tract specific*

---

**Utilities:** Electricity available, water available

**Utility Provider:** Sam Houston Electric Cooperative, Tyler County SUD

**School District:** Woodville ISD



**MORE INFO ONLINE:**  
[www.homelandprop.com](http://www.homelandprop.com)



21 Acres | T-5 | FM 1746  
Town Bluff, TX / Tyler County

---



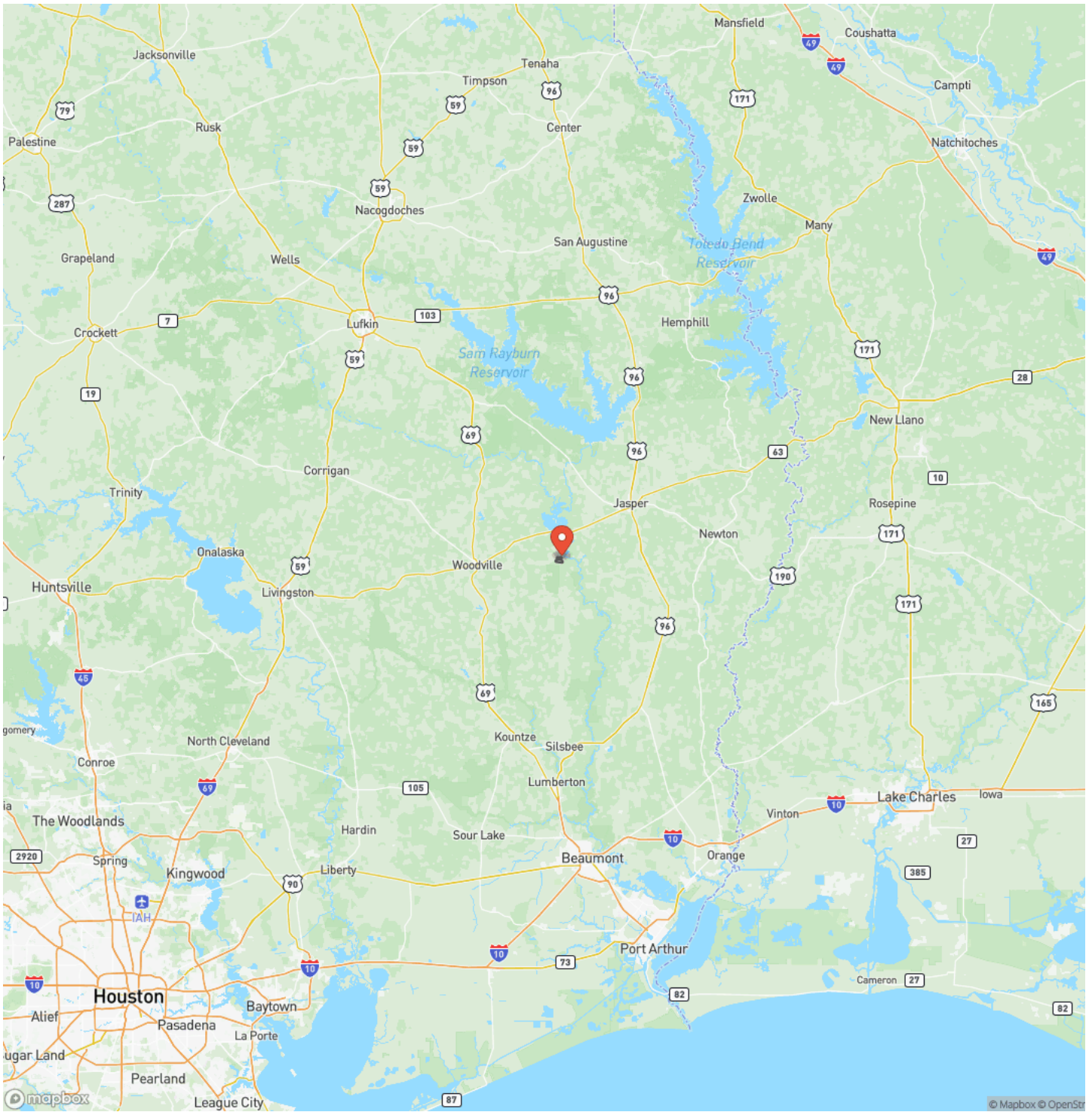
**MORE INFO ONLINE:**  
[www.homelandprop.com](http://www.homelandprop.com)

## Locator Map





# Locator Map



## Satellite Map











## **DISCLAIMERS**

Information in this brochure is provided solely for information purposes and does not constitute an offer to sell or advertise real estate outside the states in which broker or agent licensed. The information presented has been obtained from sources deemed to be reliable, but is not guaranteed or warranted by the agent, broker, or the sellers of these properties. This offering is subject to errors, omissions, prior sale, price change, correction or withdrawal from the market without notice. All references to age, square footage, income, expenses, acreage, carrying capacity, and land classification, etc. are approximate. Prospective buyers are chargeable with and expected to conduct their own independent investigation of the information and the property and to rely only on those results. Sellers reserve the right to accept or reject any and all offers without liability to any buyer or cooperating broker.

Maps are provided for illustration purposes only, the accuracy is not warranted. Parcels on interactive maps are not adjusted to match aerial backgrounds. This information is for reference purposes only and is not a legal document. Data maps contain errors. The seller and seller's agent are making known to all potential buyers that there may be variations between the location of the existing fence lines and the legal description of the deeded property. Seller and seller's agent make no warranties with regard to the location of the fence lines in relationship to the deeded property lines, nor does the Seller make any warranties or representations with regard to the specific acreage contained within the fenced property lines. Seller is selling the property in an "as is" condition, which includes the location of the fences as they exist. Boundaries shown on the accompanying maps are approximate, based on county parcel data. The maps are not to scale. The accuracy of the maps is not guaranteed. Prospective buyers are encouraged to verify fence lines, deeded property lines and acreages using a licensed surveyor at their own expense.



**MORE INFO ONLINE:**

[www.homelandprop.com](http://www.homelandprop.com)



---

**HomeLand Properties, Inc.**  
1600 Normal Park Dr.  
Huntsville, TX 77340  
(936) 295-2500  
[www.homelandprop.com](http://www.homelandprop.com)

---



**MORE INFO ONLINE:**  
[www.homelandprop.com](http://www.homelandprop.com)