

2 +/- Acres High Traffic Lee County, AL
10798
Salem, AL 36854

\$149,999
2± Acres
Lee County



**2 +/- Acres High Traffic Lee County, AL
Salem, AL / Lee County**

SUMMARY

Address

10798 Lee Road 379

City, State Zip

Salem, AL 36854

County

Lee County

Type

Undeveloped Land, Business Opportunity

Latitude / Longitude

32.7031 / -85.14358

Acreage

2

Price

\$149,999

Property Website

<https://farmandforestbrokers.com/property/2-acres-high-traffic-lee-county-al-lee-alabama/95556/>



2 +/- Acres High Traffic Lee County, AL Salem, AL / Lee County

PROPERTY DESCRIPTION

Prime 2-Acre Opportunity – Lee County, AL | Lee Road 379 Frontage

Discover an exceptional 2-acre tract located in **highly desirable Lee County, Alabama**, featuring **valuable frontage on Lee Road 379** and situated just **minutes from Lake Harding**. This property offers a rare opportunity in a **high-traffic, rapidly growing area**, making it ideal for a variety of commercial or investment uses.

The land is **relatively flat, open, and highly usable**, allowing for efficient development with minimal site work. Its prime location and visibility make it an excellent candidate for **boat storage**, a **rural convenience store**, or numerous opportunities in a growing rural area.

With steady traffic flow and continued growth in the surrounding area, this property provides both immediate appeal and long-term potential. Whether you're looking to develop now or secure a strategic investment for the future, this versatile parcel delivers location, accessibility, and opportunity.

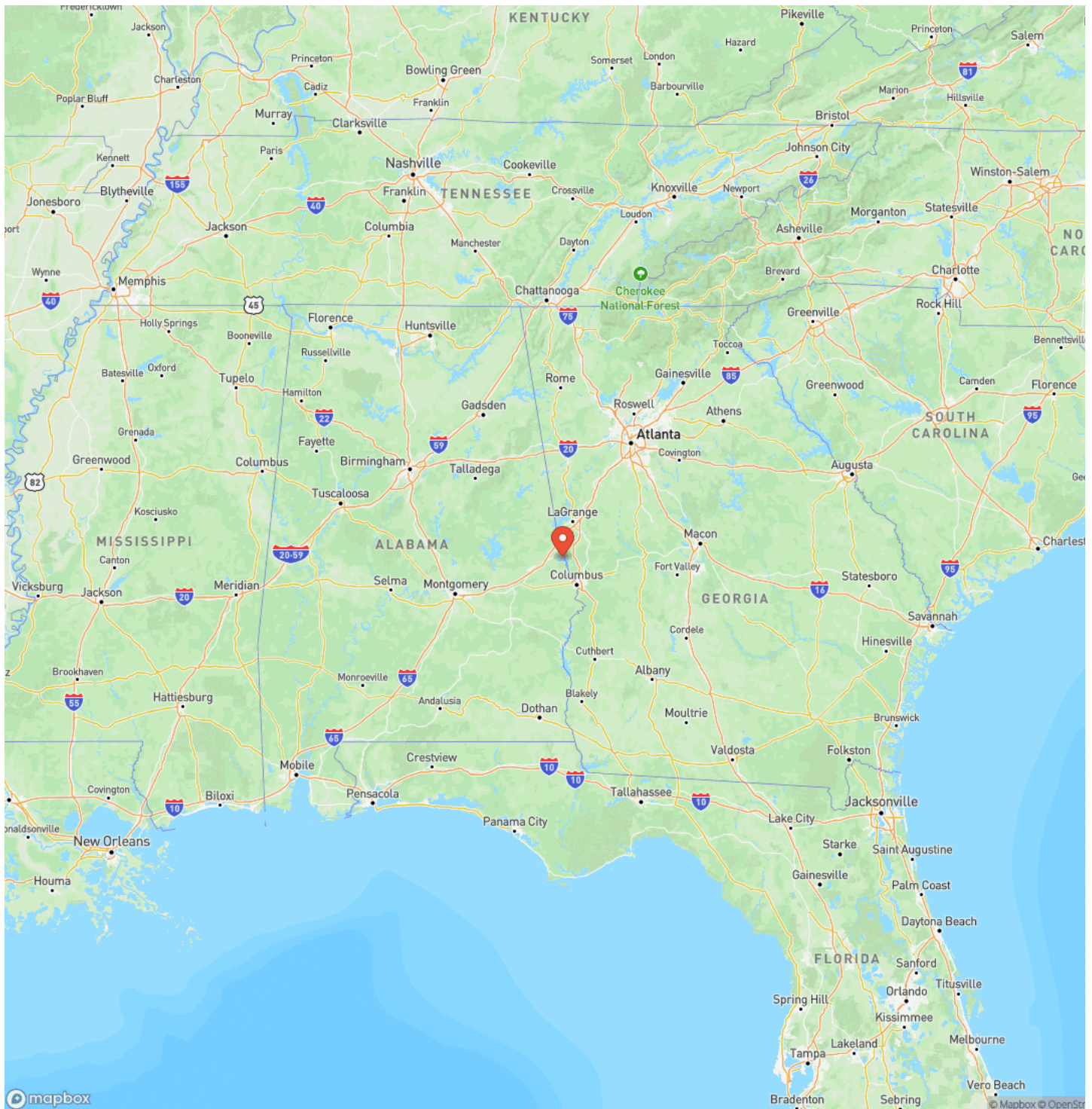
Highlights:

- 2 acres in Lee County, Alabama
- Frontage on highly traveled Lee Road 379
- Minutes from Lake Harding
- Flat, usable land
- High-traffic, growing area
- Ideal for boat storage, retail, or other uses

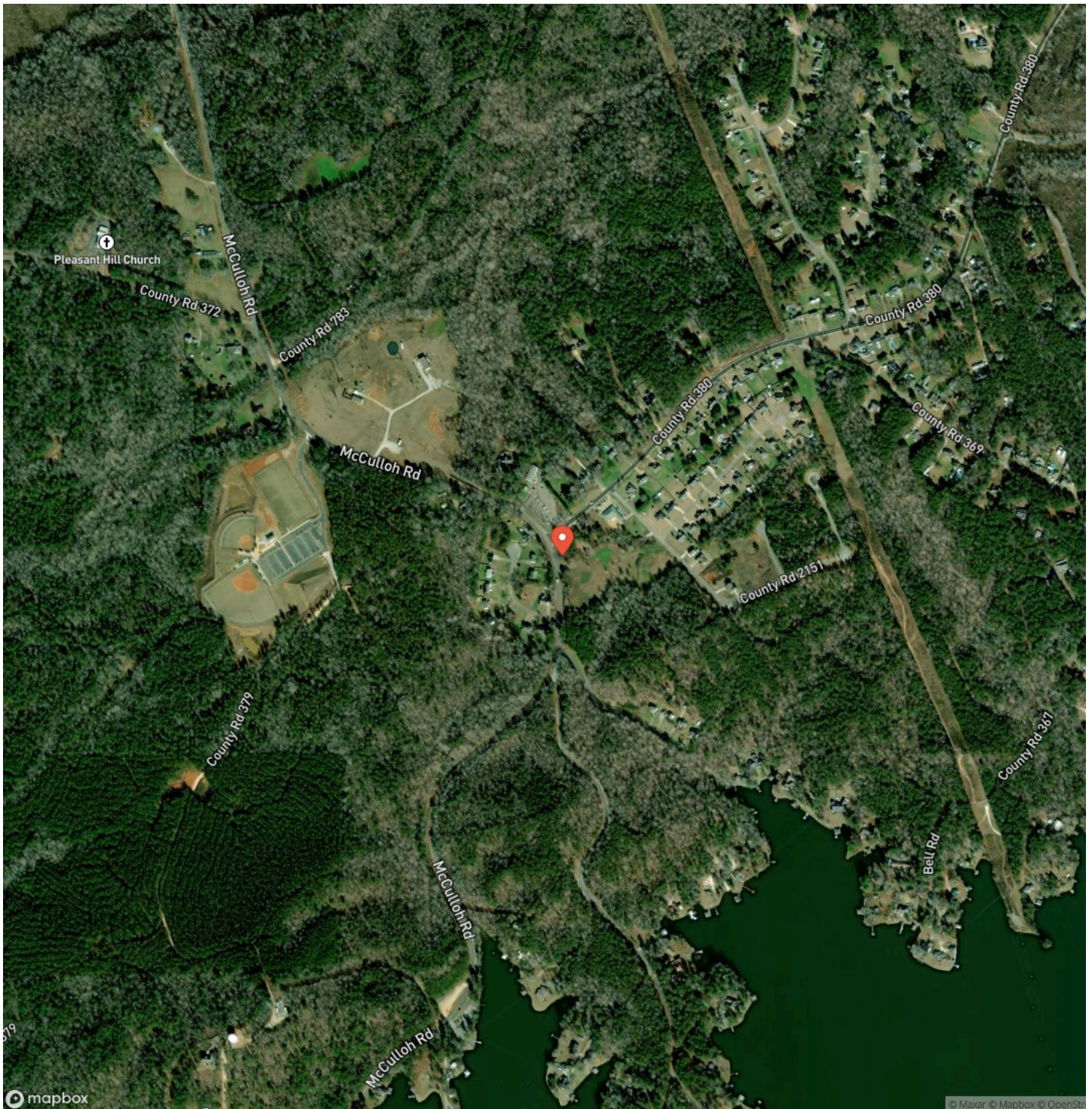
A rare opportunity to invest in one of the area's most promising locations.



Locator Map



Satellite Map



2 +/- Acres High Traffic Lee County, AL
Salem, AL / Lee County

LISTING REPRESENTATIVE
For more information contact:



Representative
Tyler Briggs
Mobile
(706) 593-3639
Email
tyler@farmandforestbrokers.com
Address
City / State / Zip

NOTES

Notes section with multiple horizontal lines for text entry.

NOTES

[illegible]

DISCLAIMERS

Information in this brochure is provided solely for information purposes and does not constitute an offer to sell or advertise real estate outside the states in which broker or agent is licensed. The information presented has been obtained from sources deemed to be reliable, but is not guaranteed or warranted by the agent, broker, or the sellers of these properties. This offering is subject to errors, omissions, prior sale, price change, correction or withdrawal from the market without notice. All references to age, square footage, income, expenses, acreage, carrying capacity, and land classification, etc. are derived from sources believed to be accurate, but are approximate. Prospective buyers are chargeable with and expected to conduct their own independent investigation of the information and the property and to rely only on those results. Sellers reserve the right to accept or reject any and all offers without liability to any buyer or cooperating broker.

Maps are provided for illustration purposes only, the accuracy is not warranted. Parcels on interactive maps are not adjusted to match aerial backgrounds. This information is for reference purposes only and is not a legal document. Data maps contain errors. The seller and seller's agent are making known to all potential buyers that there may be variations between the location of the existing boundary lines and the legal description of the deeded property. Seller and seller's agent make no warranties with regard to the location of the boundary lines in relationship to the deeded property lines, nor does the Seller make any warranties or representations with regard to the specific acreage contained within the property lines. Seller is selling the property in an "as is" condition. Boundaries shown on the accompanying maps are approximate, based on county parcel data. The maps are not to scale. The accuracy of the maps is not guaranteed. Prospective buyers are encouraged to verify fence lines, deeded property lines and acreages using a licensed surveyor at their own expense.



Farm & Forest Brokers
155 Birmingham Road
Centreville, AL 35042
(205) 340-3946
farmandforestbrokers.com/

