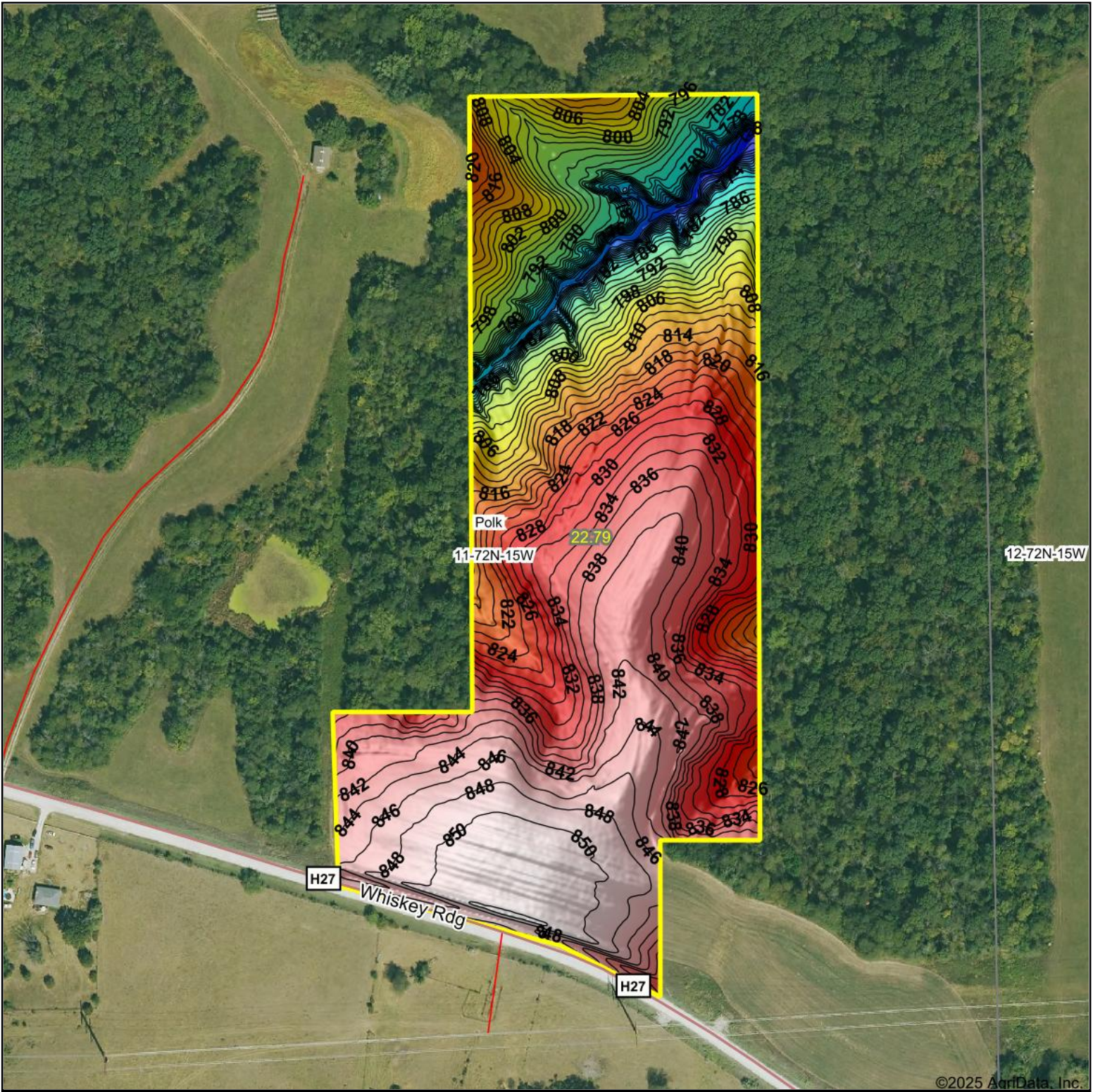
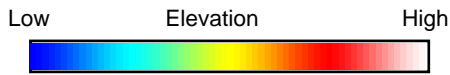


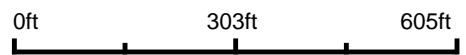
Topography Hillshade



©2025 AgriData, Inc.



Source: USGS 1 meter dem
 Interval(ft): 2
 Min: 755.0
 Max: 852.7
 Range: 97.7
 Average: 823.3
 Standard Deviation: 22.8 ft



11-72N-15W
 Wapello County
 Iowa

Boundary Center: 41° 3' 17.32, -92° 32' 50.23