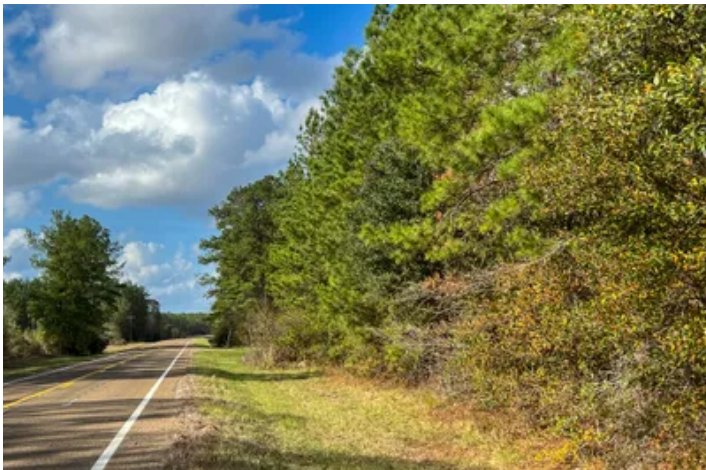


23 Acres | FM 2460
FM 2460
Kirbyville, TX 75928

\$139,150
23± Acres
Newton County



MORE INFO ONLINE:
www.homelandprop.com

23 Acres | FM 2460
Kirbyville, TX / Newton County

SUMMARY

Address

FM 2460

City, State Zip

Kirbyville, TX 75928

County

Newton County

Type

Undeveloped Land, Hunting Land, Recreational Land

Latitude / Longitude

30.6308812641 / -93.7522959366

Acreage

23

Price

\$139,150

Property Website

<https://homelandprop.com/property/23-acres-fm-2460-newton-texas/74422/>



MORE INFO ONLINE:
www.homelandprop.com

23 Acres | FM 2460
Kirbyville, TX / Newton County

PROPERTY DESCRIPTION

East of Kirbyville, TX in the community of Call, TX. Blacktop frontage on FM 2640! This tract is mostly level, perfect for many applications. The tract offers nature in abundance and the perfect home sites for a weekend getaway or primary residence. Country living at it's finest, with city convenience not too far away. Call today to schedule a showing.

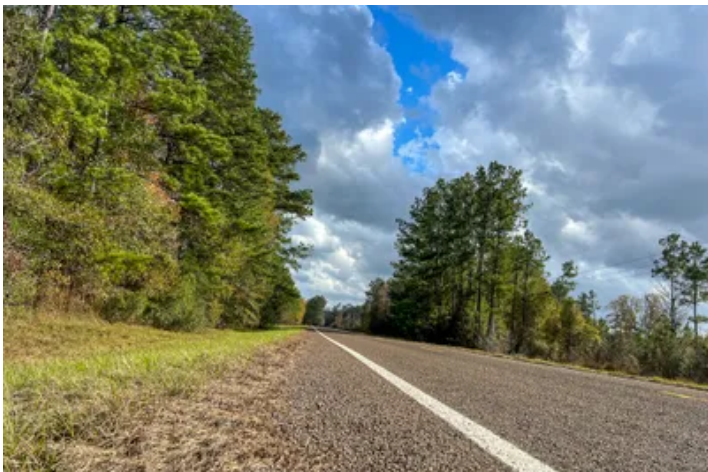
Utilities: Electricity available

School District: Kirbyville Cons ISD



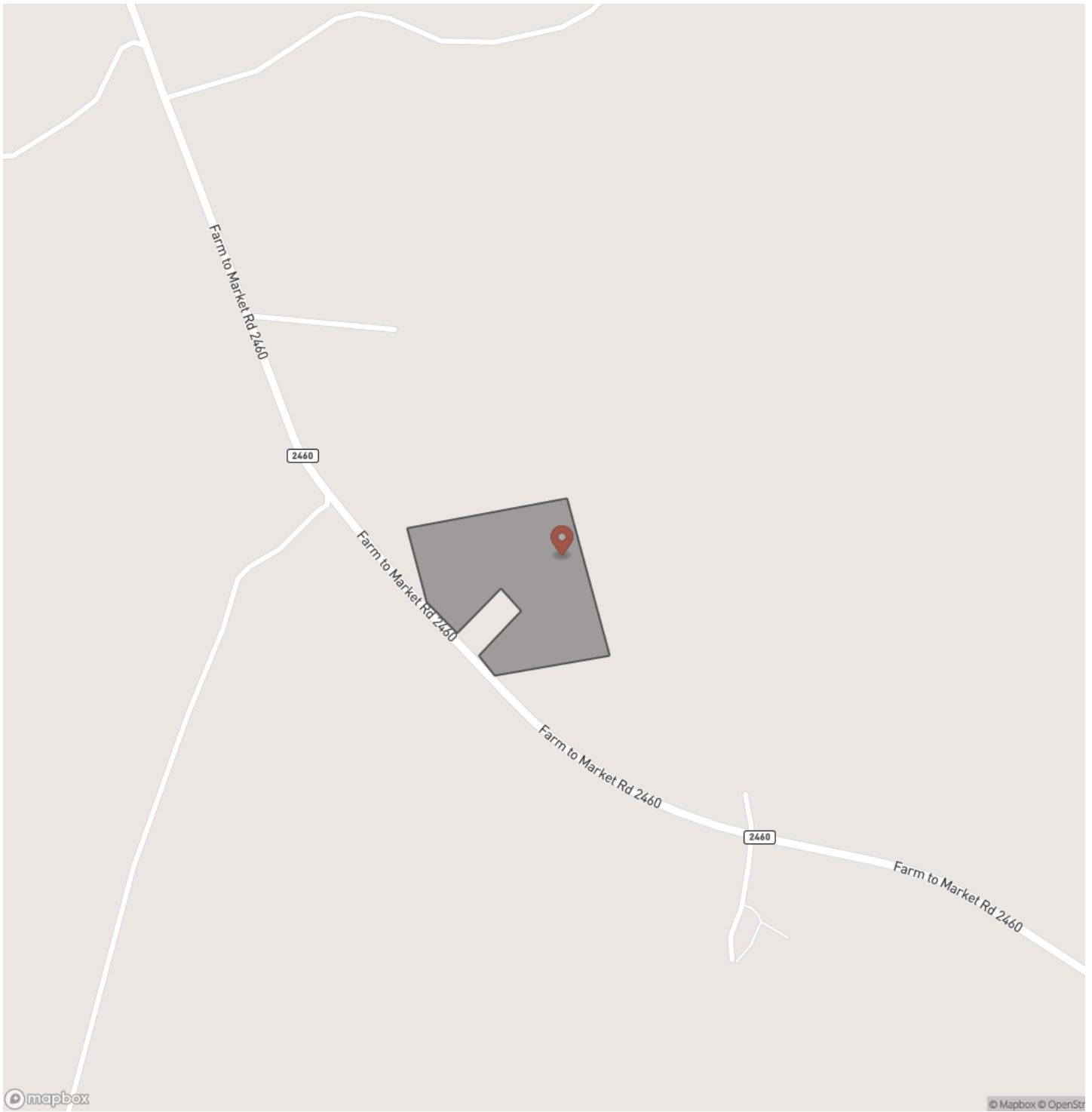
MORE INFO ONLINE:
www.homelandprop.com

23 Acres | FM 2460
Kirbyville, TX / Newton County



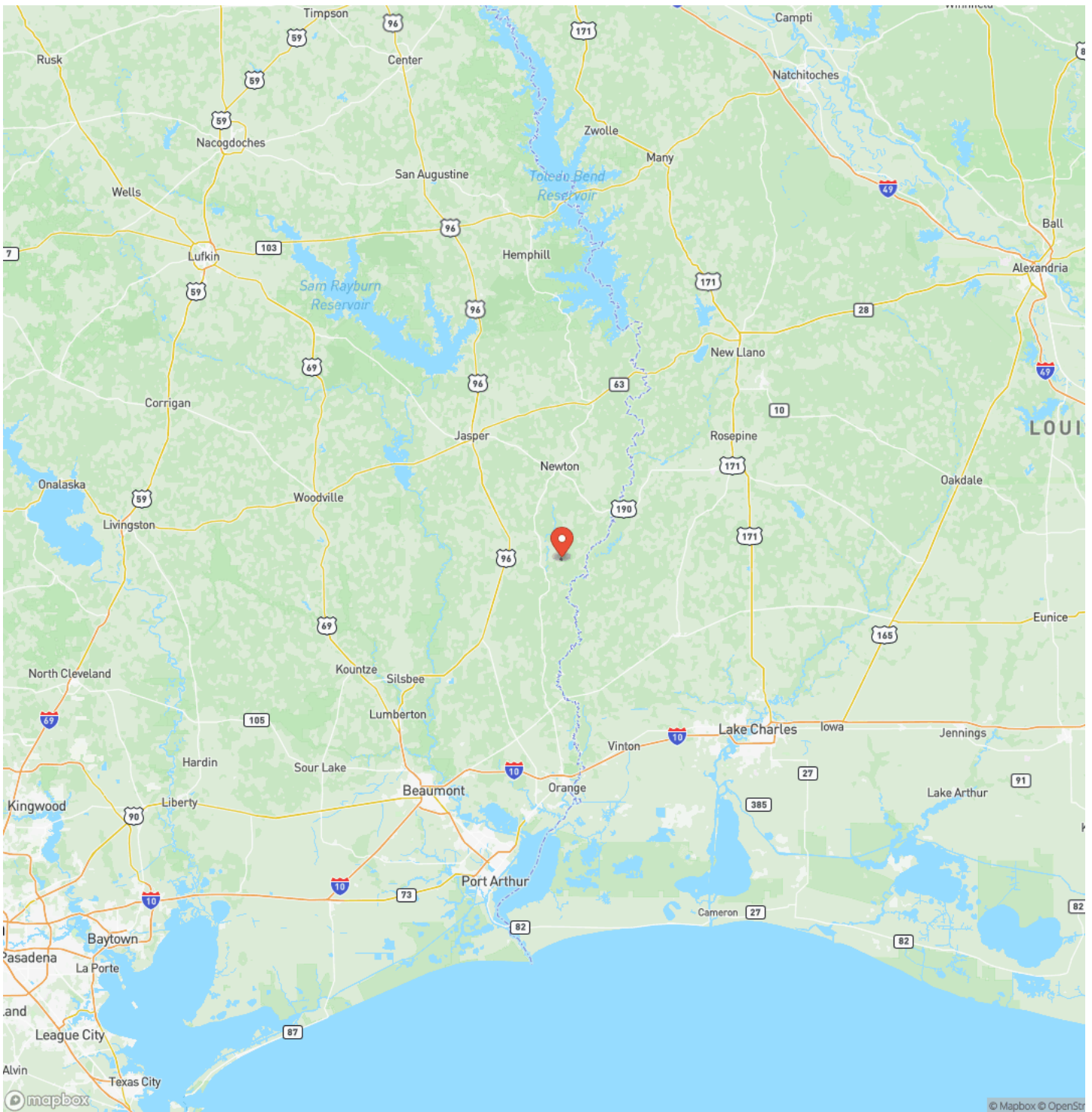
MORE INFO ONLINE:
www.homelandprop.com

Locator Map



MORE INFO ONLINE:
www.homelandprop.com

Locator Map



Satellite Map



DISCLAIMERS

Information in this brochure is provided solely for information purposes and does not constitute an offer to sell or advertise real estate outside the states in which broker or agent licensed. The information presented has been obtained from sources deemed to be reliable, but is not guaranteed or warranted by the agent, broker, or the sellers of these properties. This offering is subject to errors, omissions, prior sale, price change, correction or withdrawal from the market without notice. All references to age, square footage, income, expenses, acreage, carrying capacity, and land classification, etc. are approximate. Prospective buyers are chargeable with and expected to conduct their own independent investigation of the information and the property and to rely only on those results. Sellers reserve the right to accept or reject any and all offers without liability to any buyer or cooperating broker.

Maps are provided for illustration purposes only, the accuracy is not warranted. Parcels on interactive maps are not adjusted to match aerial backgrounds. This information is for reference purposes only and is not a legal document. Data maps contain errors. The seller and seller's agent are making known to all potential buyers that there may be variations between the location of the existing fence lines and the legal description of the deeded property. Seller and seller's agent make no warranties with regard to the location of the fence lines in relationship to the deeded property lines, nor does the Seller make any warranties or representations with regard to the specific acreage contained within the fenced property lines. Seller is selling the property in an "as is" condition, which includes the location of the fences as they exist. Boundaries shown on the accompanying maps are approximate, based on county parcel data. The maps are not to scale. The accuracy of the maps is not guaranteed. Prospective buyers are encouraged to verify fence lines, deeded property lines and acreages using a licensed surveyor at their own expense.



MORE INFO ONLINE:

www.homelandprop.com

HomeLand Properties, Inc.
1600 Normal Park Dr.
Huntsville, TX 77340
(936) 295-2500
www.homelandprop.com



MORE INFO ONLINE:
www.homelandprop.com