

Buffalo County, WI 102 Acres
S2240 Boland Valley Rd
Arcadia, WI 54612

\$999,000
102± Acres
Buffalo County



Buffalo County, WI 102 Acres
Arcadia, WI / Buffalo County

SUMMARY

Address

S2240 Boland Valley Rd

City, State Zip

Arcadia, WI 54612

County

Buffalo County

Type

Farms, Hunting Land, Ranches, Recreational Land

Latitude / Longitude

44.274988 / -91.567928

Acreage

102

Price

\$999,000

Property Website

<https://landguys.com/property/buffalo-county-wi-102-acres-buffalo-wisconsin/74906/>



Buffalo County, WI 102 Acres Arcadia, WI / Buffalo County

PROPERTY DESCRIPTION

A rare find in Buffalo County, WI—just west of Arcadia. Great top access with 102+/- acres. This property does not disappoint! Rolling hills with a great mix of roughly 35 acres of open ground, some tillable, and about 67 acres of mature timber that hunts like something twice its size.

Multiple areas for food plots, large enough to leave some stand for the long winter months. Multiple box blinds included in this sale—five Shadow Hunter blinds, the largest being 8'x8', along with two Muddy box blinds. An additional number of ladder stands will also be included.

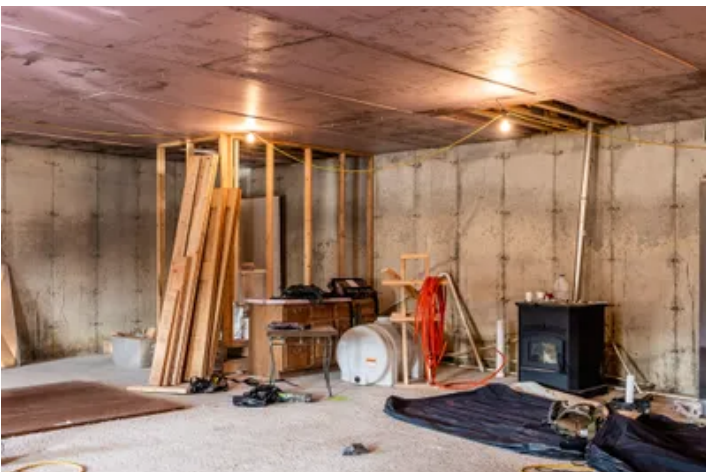
Then, come down off the hill to the partially finished 60'x40' shed. Inside, you'll find a 40'x40' area ready for you to make your own, with in-floor heat already installed. It's insulated and plumbed for a future bathroom.

Give me a call or send me a text—I'd love to show you this property!

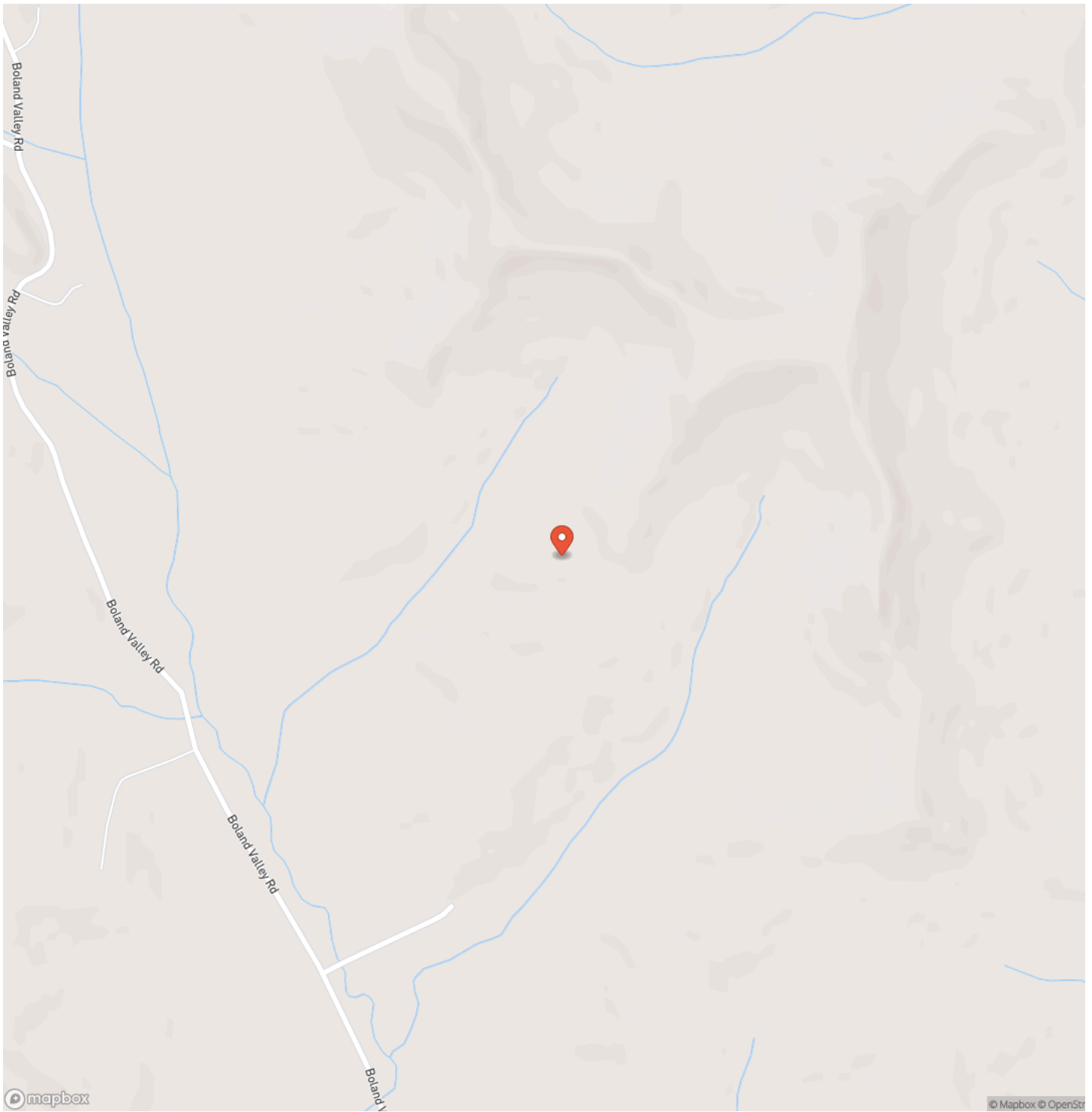
KEY FEATURES

- 102+/- acres just west of Arcadia with excellent top access.
- 35+/- acres of open ground (some tillable) and 67+/- acres of mature timber.
- Includes 5 Shadow Hunter box blinds (largest is 8'x8'), 2 Muddy box blinds, and multiple ladder stands.
- Several areas for food plots with space to leave standing crops for late-season hunting.
- 60'x40' shed with a 40'x40' finished space, in-floor heat, insulation, and plumbing for a future bathroom.
- Call or text to schedule a showing.

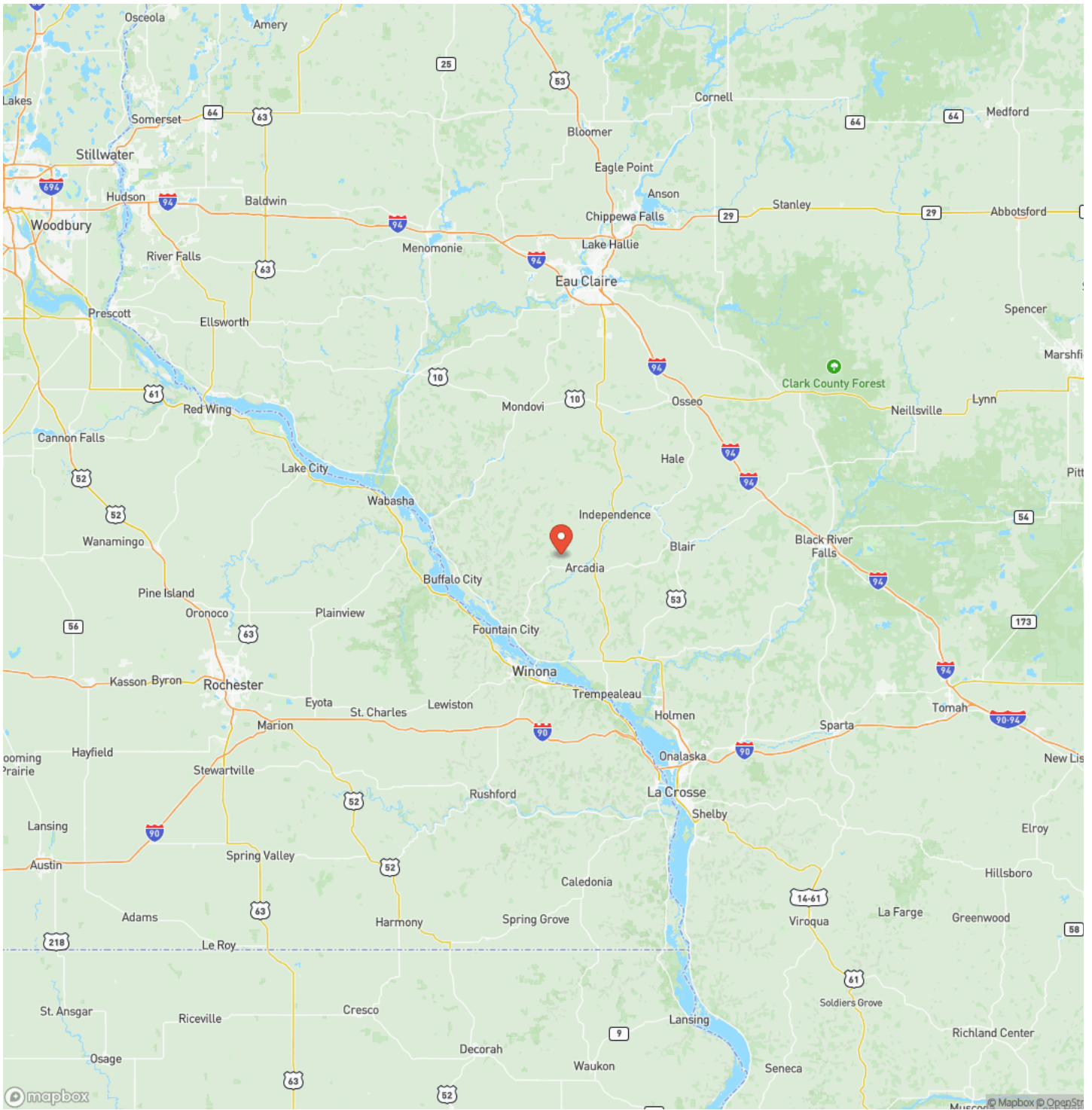
**Buffalo County, WI 102 Acres
Arcadia, WI / Buffalo County**



Locator Map



Locator Map



MORE INFO ONLINE:

www.landguys.com

Satellite Map



DISCLAIMERS

Information in this brochure is provided solely for information purposes and does not constitute an offer to sell or advertise real estate outside the states in which broker or agent licensed. The information presented has been obtained from sources deemed to be reliable, but is not guaranteed or warranted by the agent, broker, or the sellers of these properties. This offering is subject to errors, omissions, prior sale, price change, correction or withdrawal from the market without notice. All references to age, square footage, income, expenses, acreage, carrying capacity, and land classification, etc. are approximate. Prospective buyers are chargeable with and expected to conduct their own independent investigation of the information and the property and to rely only on those results. Sellers reserve the right to accept or reject any and all offers without liability to any buyer or cooperating broker.

Maps are provided for illustration purposes only, the accuracy is not warranted. Parcels on interactive maps are not adjusted to match aerial backgrounds. This information is for reference purposes only and is not a legal document. Data maps contain errors. The seller and seller's agent are making known to all potential buyers that there may be variations between the location of the existing fence lines and the legal description of the deeded property. Seller and seller's agent make no warranties with regard to the location of the fence lines in relationship to the deeded property lines, nor does the Seller make any warranties or representations with regard to the specific acreage contained within the fenced property lines. Seller is selling the property in an "as is" condition, which includes the location of the fences as they exist. Boundaries shown on the accompanying maps are approximate, based on county parcel data. The maps are not to scale. The accuracy of the maps is not guaranteed. Prospective buyers are encouraged to verify fence lines, deeded property lines and acreages using a licensed surveyor at their own expense.

LandGuys
4331 Conestoga Dr
Springfield, IL 62711
(217) 899-1240
www.landguys.com
