

Bureau County, Illinois 6.2 Acres of Land for Sale
13200 2155 East St
Princeton, IL 61356

\$120,000
6.200± Acres
Bureau County



**Bureau County, Illinois 6.2 Acres of Land for Sale
Princeton, IL / Bureau County**

SUMMARY

Address

13200 2155 East St

City, State Zip

Princeton, IL 61356

County

Bureau County

Type

Recreational Land

Latitude / Longitude

41.338431 / -89.443347

Acreage

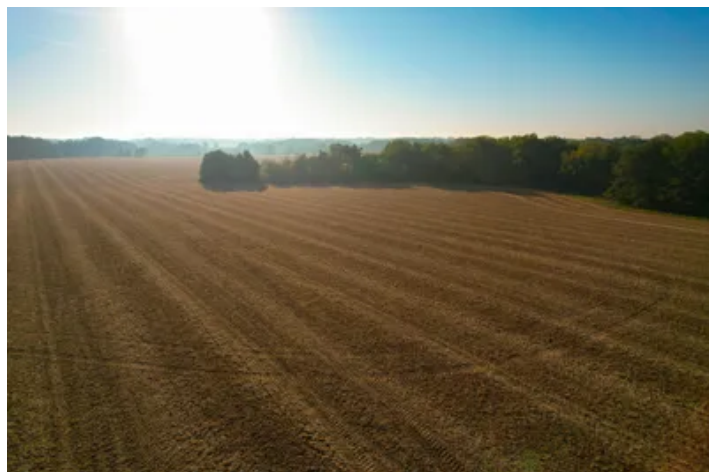
6.200

Price

\$120,000

Property Website

<https://landguys.com/property/bureau-county-illinois-6-2-acres-of-land-for-sale-bureau-illinois/90770/>



Bureau County, Illinois 6.2 Acres of Land for Sale Princeton, IL / Bureau County

PROPERTY DESCRIPTION

6.2 Acres - Prime Homesite Just Outside Princeton, IL

Discover the perfect blend of rural tranquility and convenient access with this exceptional property located just minutes from historic Princeton, Illinois. Situated in a highly desirable area, this spacious parcel offers the ideal setting for your future dream home. Nestled among gently rolling landscapes and mature trees, the property boasts a peaceful, scenic environment while remaining close to town amenities, shopping, schools, and I-80 for easy commuting. Whether you're looking to build a custom residence, create a weekend getaway, or invest in land in a high-demand location, this site checks all the boxes. With utilities nearby and ample space for outbuildings, gardens, or a hobby farm, this is a rare opportunity to secure your slice of countryside in a prime location.

KEY FEATURES

- Prime Location Close to Princeton, IL
- Rare Small Acre Property
- Excellent Homesite
- Quiet Country Road
- 6.2+/- Acres In Bureau County, IL

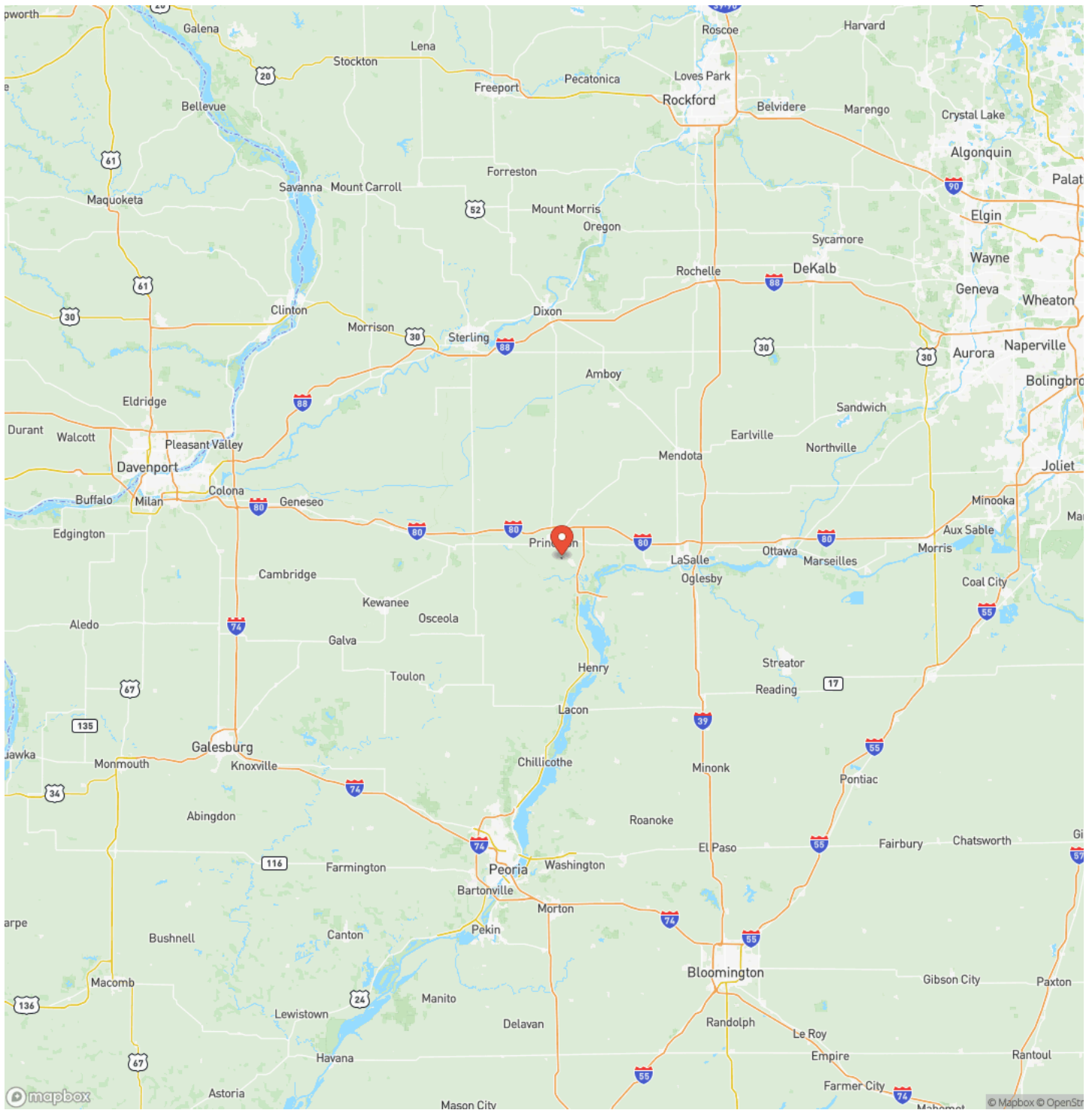
**Bureau County, Illinois 6.2 Acres of Land for Sale
Princeton, IL / Bureau County**



Locator Map



Locator Map



MORE INFO ONLINE:

www.landguys.com

Satellite Map



DISCLAIMERS

Information in this brochure is provided solely for information purposes and does not constitute an offer to sell or advertise real estate outside the states in which broker or agent licensed. The information presented has been obtained from sources deemed to be reliable, but is not guaranteed or warranted by the agent, broker, or the sellers of these properties. This offering is subject to errors, omissions, prior sale, price change, correction or withdrawal from the market without notice. All references to age, square footage, income, expenses, acreage, carrying capacity, and land classification, etc. are approximate. Prospective buyers are chargeable with and expected to conduct their own independent investigation of the information and the property and to rely only on those results. Sellers reserve the right to accept or reject any and all offers without liability to any buyer or cooperating broker.

Maps are provided for illustration purposes only, the accuracy is not warranted. Parcels on interactive maps are not adjusted to match aerial backgrounds. This information is for reference purposes only and is not a legal document. Data maps contain errors. The seller and seller's agent are making known to all potential buyers that there may be variations between the location of the existing fence lines and the legal description of the deeded property. Seller and seller's agent make no warranties with regard to the location of the fence lines in relationship to the deeded property lines, nor does the Seller make any warranties or representations with regard to the specific acreage contained within the fenced property lines. Seller is selling the property in an "as is" condition, which includes the location of the fences as they exist. Boundaries shown on the accompanying maps are approximate, based on county parcel data. The maps are not to scale. The accuracy of the maps is not guaranteed. Prospective buyers are encouraged to verify fence lines, deeded property lines and acreages using a licensed surveyor at their own expense.

LandGuys
4331 Conestoga Dr
Springfield, IL 62711
(217) 899-1240
www.landguys.com
