

138 Chestnut St. - Forest County - 7.3 Acres
Marienville, PA / Forest County

SUMMARY

Address

138 Chestnut St.

City, State Zip

Marienville, PA 16239

County

Forest County

Type

Commercial

Latitude / Longitude

41.471293 / -79.119753

Taxes (Annually)

5201

Dwelling Square Feet

6972

Bedrooms / Bathrooms

1 / 1.5

Acreage

7.300

Price

\$299,900

Property Website

<https://www.mossoakproperties.com/property/138-chestnut-st-forest-county-7-3-acres-forest-pennsylvania/56745/>



138 Chestnut St. - Forest County - 7.3 Acres Marienville, PA / Forest County

PROPERTY DESCRIPTION

Business in the heart of the Pennsylvania Wilds with already established cash flow. This property includes a large retail space, offices, a small efficiency apartment, storage, garage, room to grow with over 7 acres, and two 100'x30' storage unit buildings with units currently being rented. Lots of possibilities with this property as it sits on the edge of town, strategically near the Allegheny National Forest with frontage on Route 66 and the Knox and Kane Rail Trail, in an area with no zoning.

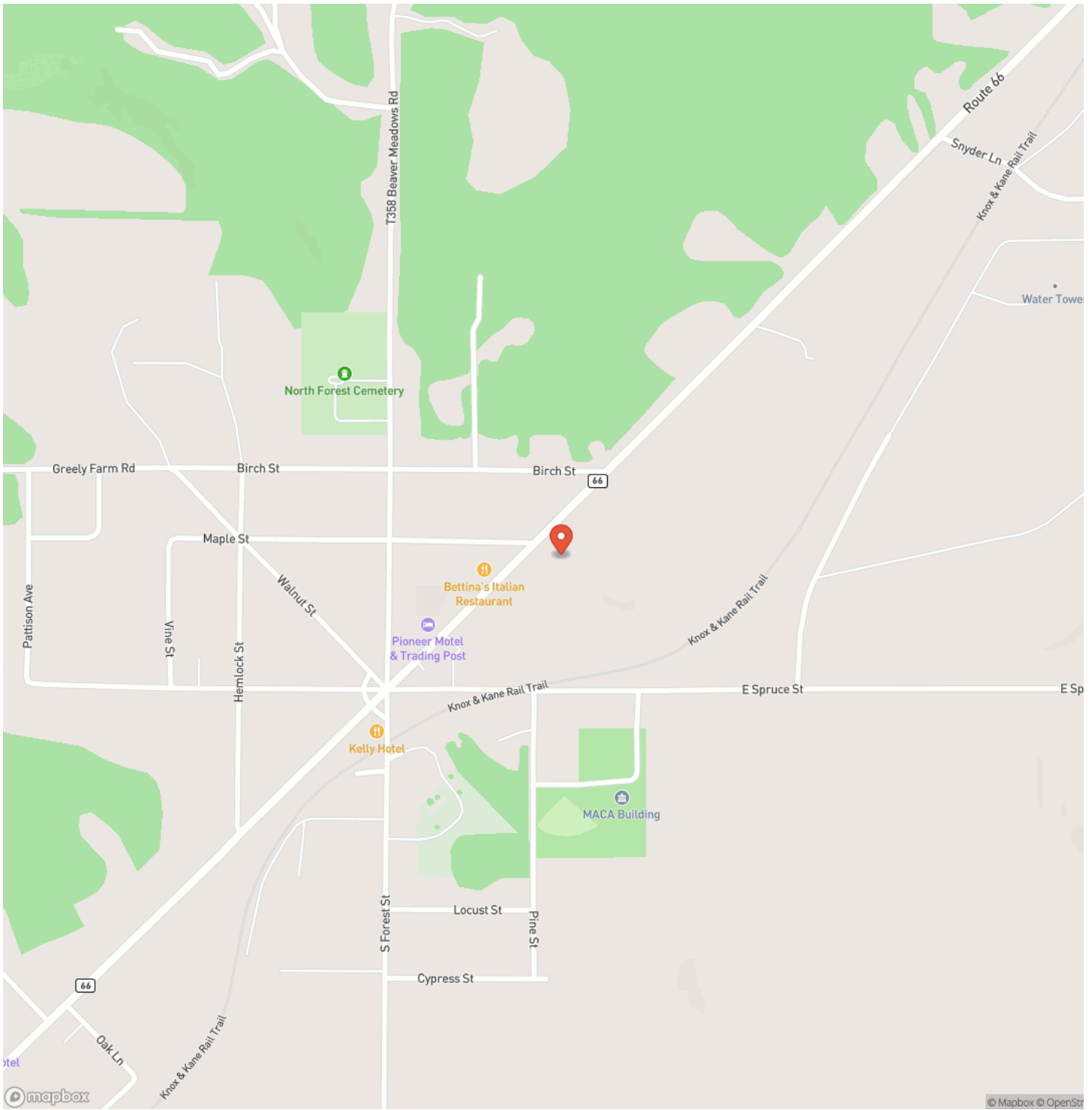
Features Of The Property Include:

- 7.3 +/- total acres
- Building was built in 1996 with 6,972 total sq ft
- Retail space
- Office space
- Small efficiency apartment
- Garage with 2 overhead doors
- Two 30'x 100' storage unit buildings
- Currently producing income from rented units
- Frontage on Route 66
- Frontage on Knox and Kane Rail Trail
- Near Allegheny National Forest
- No zoning
- Public water and sewer

138 Chestnut St. - Forest County - 7.3 Acres
Marienville, PA / Forest County



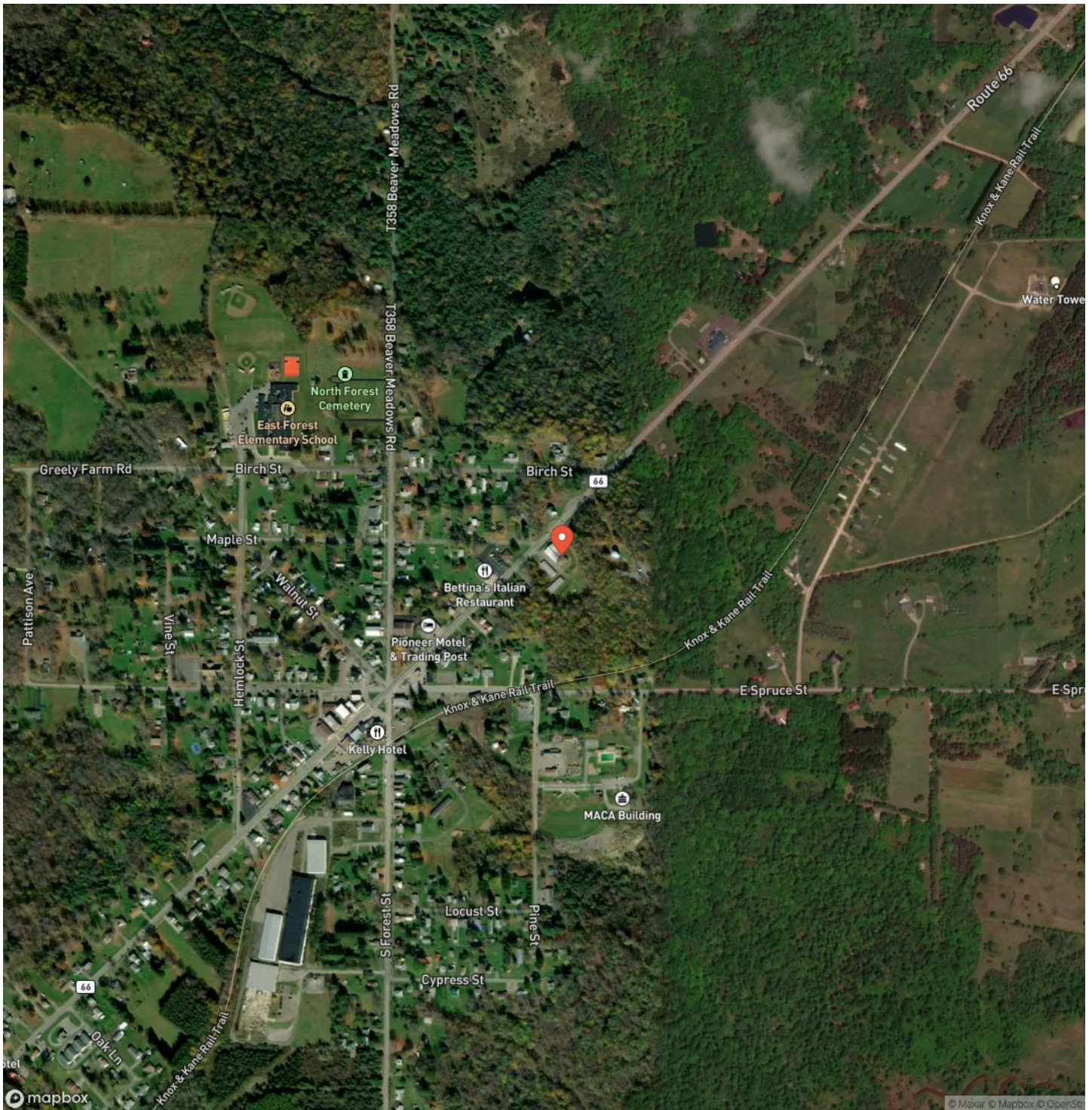
Locator Map



Locator Map



Satellite Map



DISCLAIMERS

Information in this brochure is provided solely for information purposes and does not constitute an offer to sell or advertise real estate outside the states in which broker or agent licensed. The information presented has been obtained from sources deemed to be reliable, but is not guaranteed or warranted by the agent, broker, or the sellers of these properties. This offering is subject to errors, omissions, prior sale, price change, correction or withdrawal from the market without notice. All references to age, square footage, income, expenses, acreage, carrying capacity, and land classification, etc. are approximate. Prospective buyers are chargeable with and expected to conduct their own independent investigation of the information and the property and to rely only on those results. Sellers reserve the right to accept or reject any and all offers without liability to any buyer or cooperating broker.

Maps are provided for illustration purposes only, the accuracy is not warranted. Parcels on interactive maps are not adjusted to match aerial backgrounds. This information is for reference purposes only and is not a legal document. Data maps contain errors. The seller and seller's agent are making known to all potential buyers that there may be variations between the location of the existing fence lines and the legal description of the deeded property. Seller and seller's agent make no warranties with regard to the location of the fence lines in relationship to the deeded property lines, nor does the Seller make any warranties or representations with regard to the specific acreage contained within the fenced property lines. Seller is selling the property in an "as is" condition, which includes the location of the fences as they exist. Boundaries shown on the accompanying maps are approximate, based on county parcel data. The maps are not to scale. The accuracy of the maps is not guaranteed. Prospective buyers are encouraged to verify fence lines, deeded property lines and acreages using a licensed surveyor at their own expense.

Mossy Oak Properties Pennsylvania Land Professionals
511 Skyline Dr.
Belle Vernon, PA 15012
(724) 678-1232
mossyoakproperties.com

