

**LEGEND**

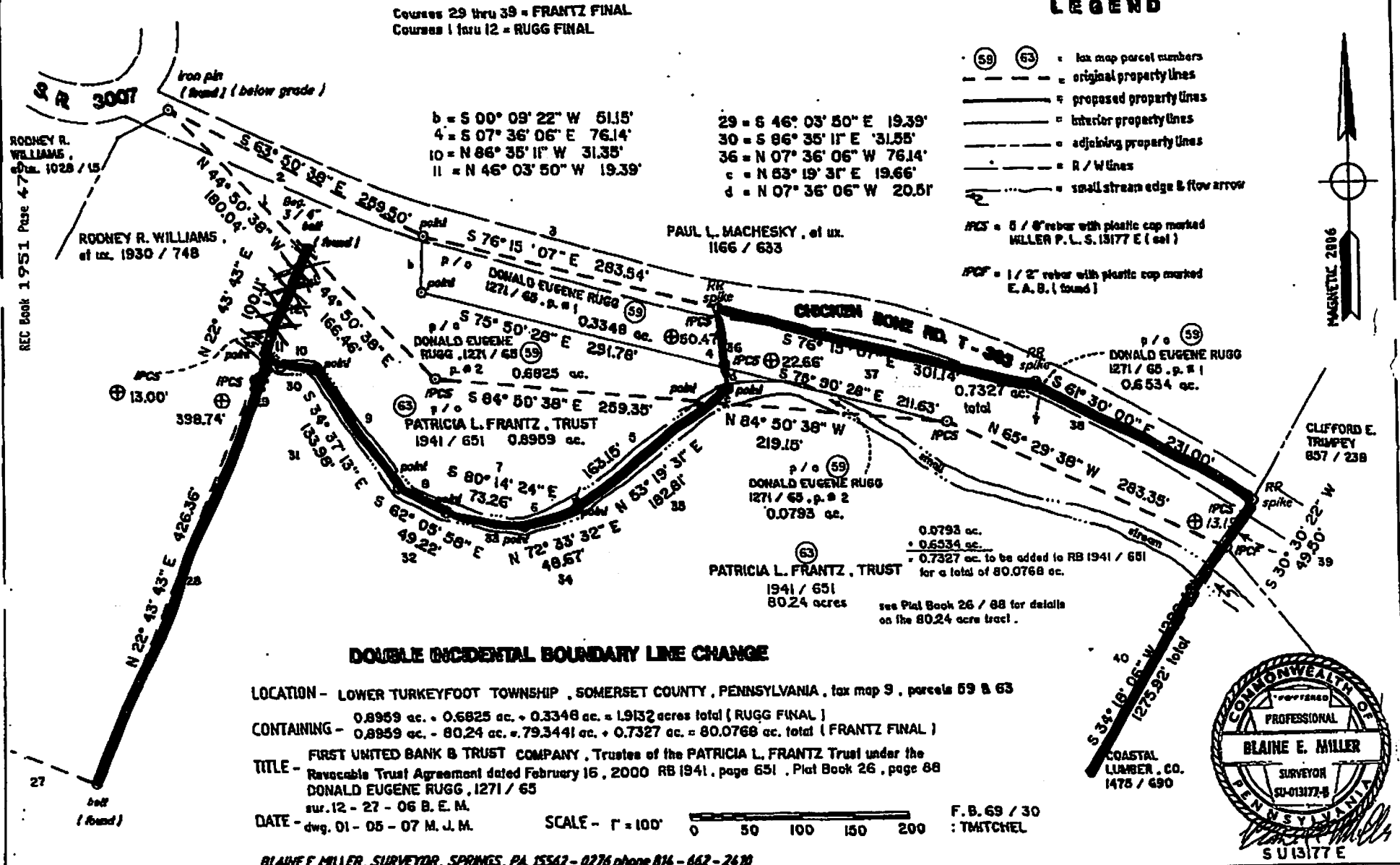
- (59) (63) = tax map parcel numbers
- - - = original property lines
- - - = proposed property lines
- - - = interior property lines
- - - = adjoining property lines
- - - = R / W lines
- - - = small stream edge & flow arrow
- IPCS = 5 / 8" rebar with plastic cap marked MILLER P. L. S. 13177 E (cal)
- IPCF = 1 / 2" rebar with plastic cap marked E. A. B. (found)



Courses 29 thru 39 = FRANTZ FINAL  
 Courses 1 thru 12 = RUGG FINAL

b = S 00° 09' 22" W 51.15'  
 4 = S 07° 36' 06" E 76.14'  
 10 = N 86° 35' 11" W 31.35'  
 11 = N 46° 03' 50" W 19.39'

29 = S 46° 03' 50" E 19.39'  
 30 = S 86° 35' 11" E 31.55'  
 36 = N 07° 36' 06" W 76.14'  
 c = N 83° 19' 31" E 19.66'  
 d = N 07° 36' 06" W 20.51'



**DOUBLE INCIDENTAL BOUNDARY LINE CHANGE**

LOCATION - LOWER TURKEYFOOT TOWNSHIP, SOMERSET COUNTY, PENNSYLVANIA, tax map 9, parcels 59 & 63

CONTAINING - 0.8959 ac. + 0.6825 ac. + 0.3348 ac. = 1.9132 acres total ( RUGG FINAL )  
 0.8959 ac. - 80.24 ac. = 79.3441 ac. + 0.7327 ac. = 80.0768 ac. total ( FRANTZ FINAL )

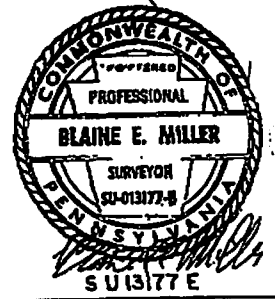
TITLE - FIRST UNITED BANK & TRUST COMPANY, Trustees of the PATRICIA L. FRANTZ Trust under the Revocable Trust Agreement dated February 16, 2000 RB 1941, page 651, Plat Book 26, page 88  
 DONALD EUGENE RUGG, 1271 / 65

DATE - sur. 12 - 27 - 06 B. E. M.  
 dwg. 01 - 05 - 07 M. J. M.

SCALE - 1" = 100'  
 0 50 100 150 200

F. B. 69 / 30  
 : TMTCHNL

BLAINE E. MILLER, SURVEYOR, SPRINGS, PA. 15542 - 0276 phone 814 - 662 - 2470



0.0793 ac.  
 + 0.6534 ac.  
 = 0.7327 ac. to be added to RB 1941 / 651  
 for a total of 80.0768 ac.  
 see Plat Book 26 / 88 for details  
 on the 80.24 acre tract.