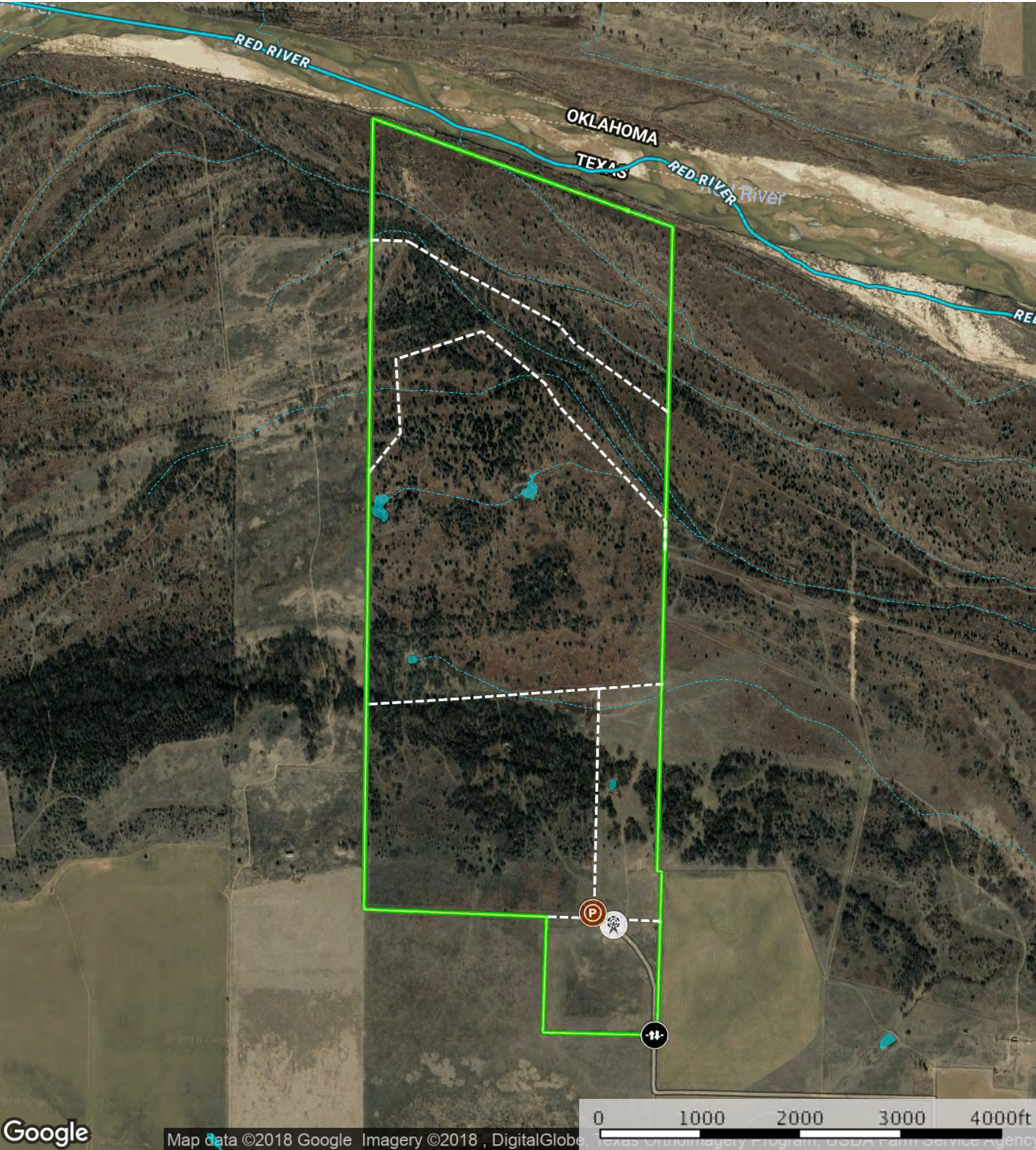


Charlie River Ranch - West Side
Clay County, Texas, 368 AC +/-



Google

Map data ©2018 Google Imagery ©2018 , DigitalGlobe, Texas Orthoimagery Program, USDA Farm Service Agency

Pens

Gate

Windmill

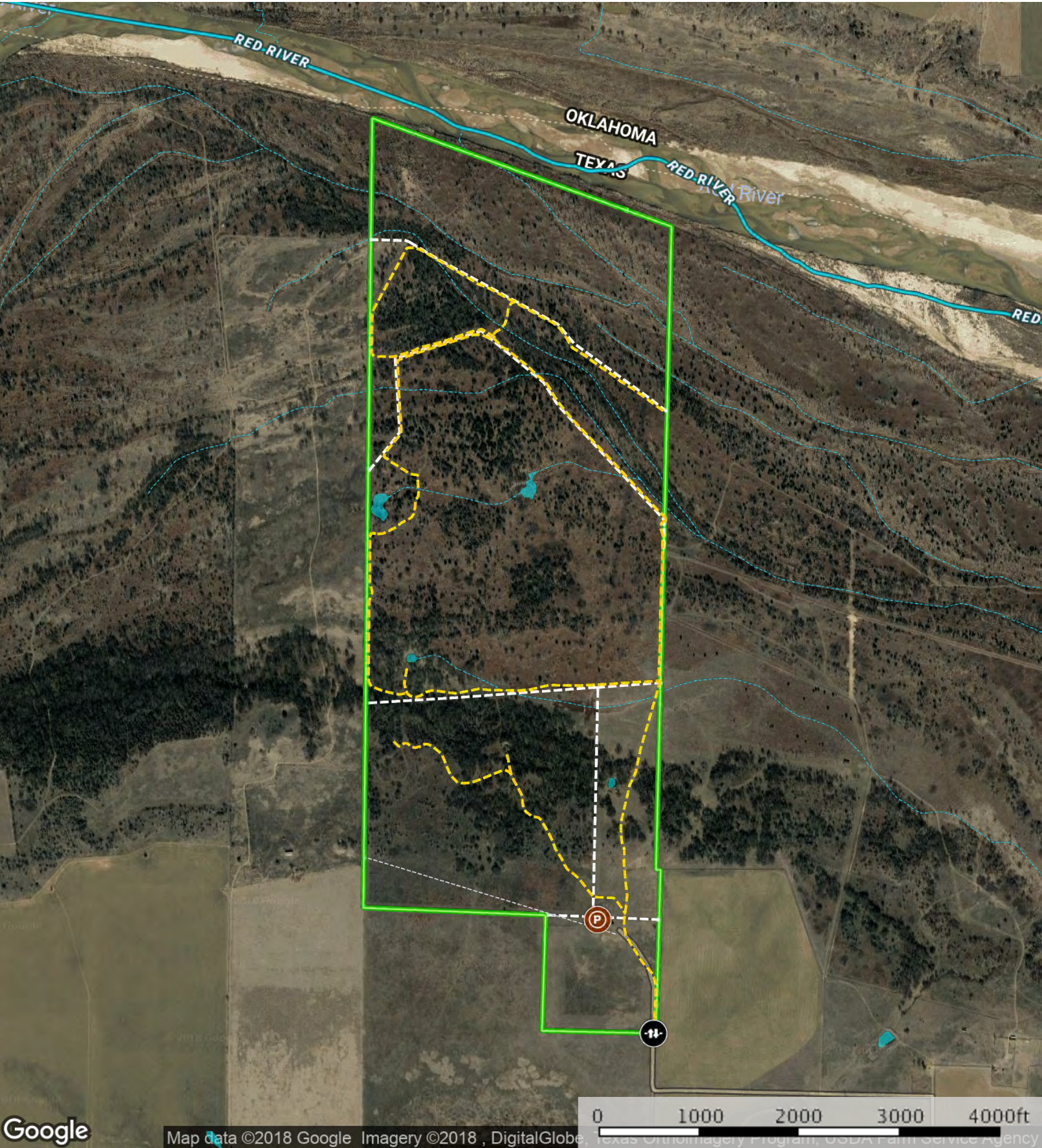
Fence

West Side - 368 Acres

Stream, Intermittent

River/Creek

Water Body



Google

Map data ©2018 Google Imagery ©2018 , DigitalGlobe, Texas Orthoimagery Program, USDA Farm Service Agency

Pens

Gate

Road / Trail

Electrical Line

Fence

West Side - 368 Acres

Stream, Intermittent

River/Creek

Water Body