

HISTORY OF SURVEYS

Township 8 South, Range 35 1/2 East of the Willamette Meridian was originally subdivided by W.B. Barr under GLO contract number 492, dated August 22, 1884.

The Cougar lode was originally monumented by mineral survey number 362 and the Wildcat lode was originally monumented by mineral survey number 363, both by Charles M. Foster under instructions dated June 1, 1899.

The Eureka, Excelsior, Monte Christo, South Cougar and Tamecat lodes were originally monumented by mineral survey number 441 by George Scoggins under instructions dated August 26, 1901.

The Albatross and Valkyrie lodes were originally monumented by mineral survey number 657 by William W. Elmer under instructions dated April 20, 1906.

The Northeast corner of Section 28, Township 8 South, Range 35 1/2 East of the Willamette Meridian, corner number 2 of the Excelsior lode, mineral survey number 441 and corner number 3 of the Cougar lode, mineral survey number 362, were monumented from original corner evidence by Leland Lee Myers, OPLS 699. The section corner and corner number 2 of the Excelsior lode were monumented in November, 1983, and corner number 3 of the Cougar lode was monumented in May, 1985.

BASIS OF BEARING

Solar observation taken at a point 1626.28 feet South and 49.57 feet East of the Northwest corner of Section 27, Township 8 South, Range 35 1/2 East of the Willamette Meridian. (Hour angle method)

Date August 24, 1987
 Latitude 44°50'32"
 Longitude 118°24'58"
 Time 12:19 (GCT)
 Magnetic declination 17° East



LEGEND

- Found aluminum monument set by Leland Lee Myers, OPLS 699
- ⊙ Found original survey corner evidence and set a 2 1/2" x 30" aluminum monument
- ⊙ Set a 2 1/2" x 30" aluminum monument at position determined by survey
- () Record bearing and distance of mineral survey number 657, by William W. Elmer
- [] Record bearing and distance of mineral survey number 441, by George Scoggins
- [] Record bearing and distance of mineral survey numbers 362 and 363, by Charles M. Foster
- < > Record bearing and distance of GLO contract number 492, by W.B. Barr
- ⊙ Mineral survey corner number
- National Forest boundary line posted to standard
- NF United States government property administered by the Umatilla National Forest
- P Privately owned lands

NOTE:
 For monumentation information, see monumentation sheets filed separately.

SURVEYOR'S STATEMENT

I, Duane I. Griffith, Registered Land Surveyor in the State of Oregon, hereby certify that this plan and the notes hereon, or attached, are a true and correct representation of the survey I made in August and September, 1987, at the request of the USDA, Forest Service, in accordance with the statutes of the State of Oregon, and with the articles of my contract.

This survey was performed using Zeiss Th-2 one second theodolites. The distances were measured with Mac IE and Mac III (infra-red) units. The purpose of this survey was to locate and establish the National Forest boundary as shown.

Nearly all of the original mineral survey corners pertinent to this survey were found. The only original corners placed by survey were the Northeastly center end of the Cougar lode and corner number 3 of the Valkyrie lode. The center end of the Cougar lode was undoubtedly destroyed by an exploratory trench. I place this corner at the midpoint of the Northeastly line of the lode, which puts the monument on the Southerly edge of the trench.

At corner number 3 of the Valkyrie lode, I find a 28 to 30 inch diameter Ponderosa Pine stump cut approximately 30 inches high. There are possible old axe marks at the top of the stump, however, the stump was chopped open by Forest Service personnel. I place the corner on the basis of this stump being the original Southwest bearing tree, due to the harmonious fit with corner numbers 2 and 4 of the Valkyrie lode based on the original mineral survey records.

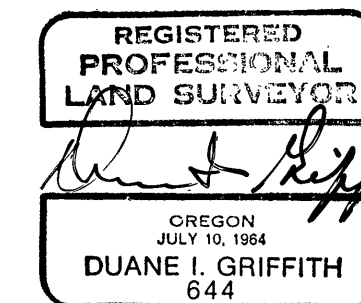
I also monumented the intersection points where the Albatross and Tame Cat lodes overlap. These points are angle points in the National Forest boundary. I find many unrecorded monuments on these mineral surveys. Most were driven into or alongside of the original corner post. These monuments included 1/2" iron pipes, 1" iron pipes and 5/8" iron pipes with aluminum caps stamped with the lode name and corner number. As these monuments were unrecorded, I removed them on the corners that I monumented, to eliminate confusion as to the true corner location. See monumentation sheets for specific information for each corner.

I find no other unusual conditions on this survey.

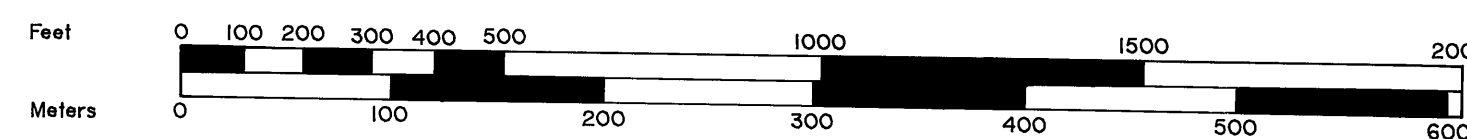
Duane I. Griffith

Duane I. Griffith, OPLS 644
 Bagett, Griffith and Associates
 2006 Adams Avenue
 La Grande, Oregon 97850

October 14, 1987



Scale 1" = 300'



1 Meter = 3.28083333 Feet

Mineral Survey corner ties

Mineral Survey Numbers 362 and 363
 Corner number 1 of Wildcat and Cougar lodes to the Southwest corner of Section 22, Township 8 South, Range 35 1/2 East of the Willamette Meridian.
 M.S. 362 & 363 Record: S 44°30' W 829 feet
 M.S. 657 Record: S 44°30' W 775.80 feet
 This survey: S 43°05'58" W 774.43 feet

Mineral Survey Number 657
 Corner number 1 of Albatross and Valkyrie lodes to the Northeast corner of Section 28, Township 8 South, Range 35 1/2 East of the Willamette Meridian.
 Record: N 48°21' E 706.08 feet
 This survey: N 47°10'09" E 703.59 feet

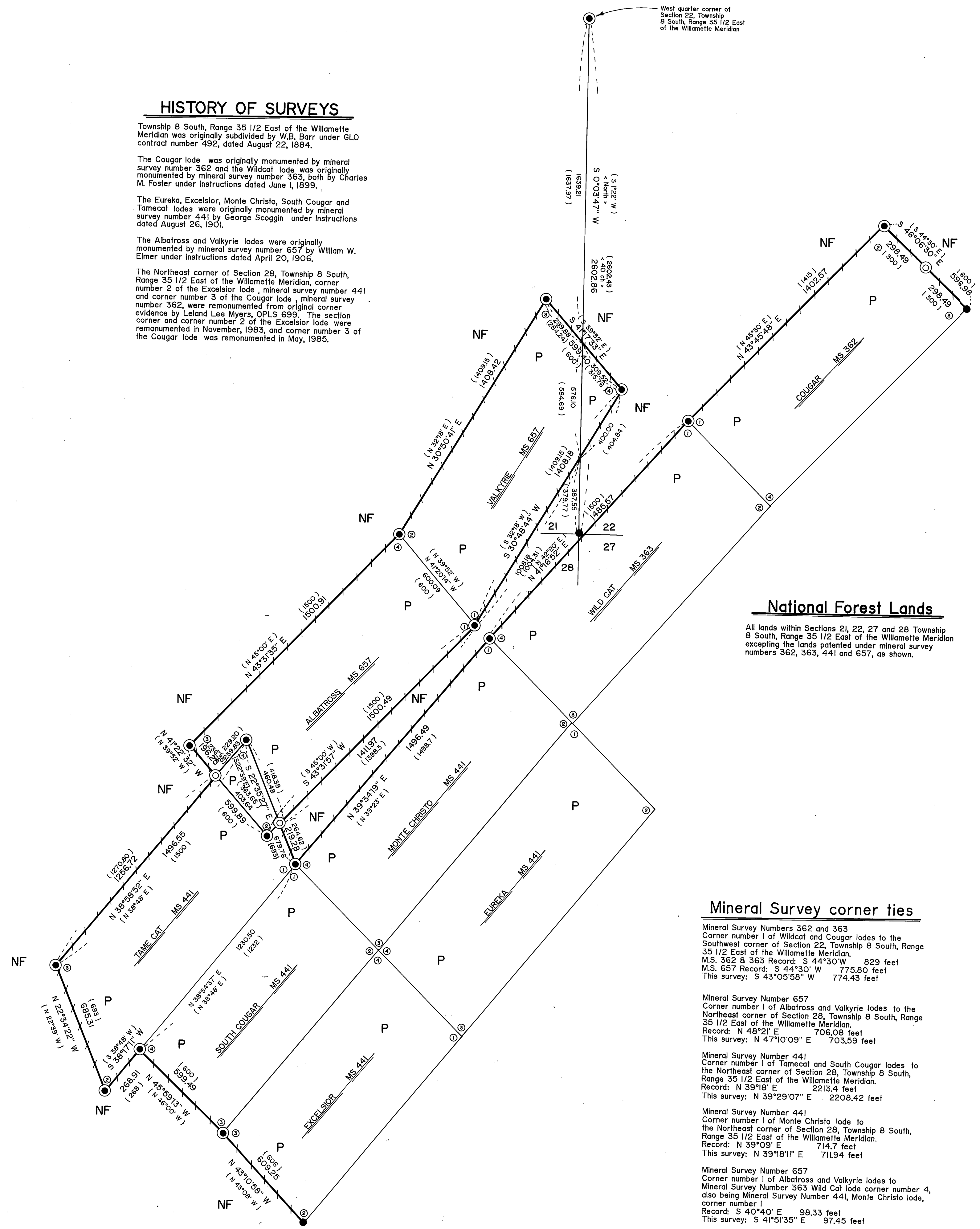
Mineral Survey Number 441
 Corner number 1 of Tamecat and South Cougar lodes to the Northeast corner of Section 28, Township 8 South, Range 35 1/2 East of the Willamette Meridian.
 Record: N 39°18' E 2213.4 feet
 This survey: N 39°29'07" E 2208.42 feet

Mineral Survey Number 441
 Corner number 1 of Monte Christo lode to the Northeast corner of Section 28, Township 8 South, Range 35 1/2 East of the Willamette Meridian.
 Record: N 39°09' E 714.7 feet
 This survey: N 39°18'11" E 711.94 feet

Mineral Survey Number 657
 Corner number 1 of Albatross and Valkyrie lodes to Mineral Survey Number 363 Wild Cat lode corner number 4, also being Mineral Survey Number 441, Monte Christo lode, corner number 1
 Record: S 40°40' E 98.33 feet
 This survey: S 41°51'35" E 97.45 feet

National Forest Lands

All lands within Sections 21, 22, 27 and 28 Township 8 South, Range 35 1/2 East of the Willamette Meridian excepting the lands patented under mineral survey numbers 362, 363, 441 and 657, as shown.



BAGETT - GRIFFITH & ASSOCIATES
 La Grande, Oregon
 Map of Survey
 Mineral Survey Numbers 362, 363, 441 and 657, Located in Sections 21, 22, 27 and 28, Township 8 South, Range 35 1/2 East of the Willamette Meridian.
 GRANT COUNTY, OREGON
 SURVEYED FOR Umatilla National Forest
 SURVEYED BY d.i.g. 889-87
 Scale: 1" = 300' Drawn by: R.G.R. 9-87