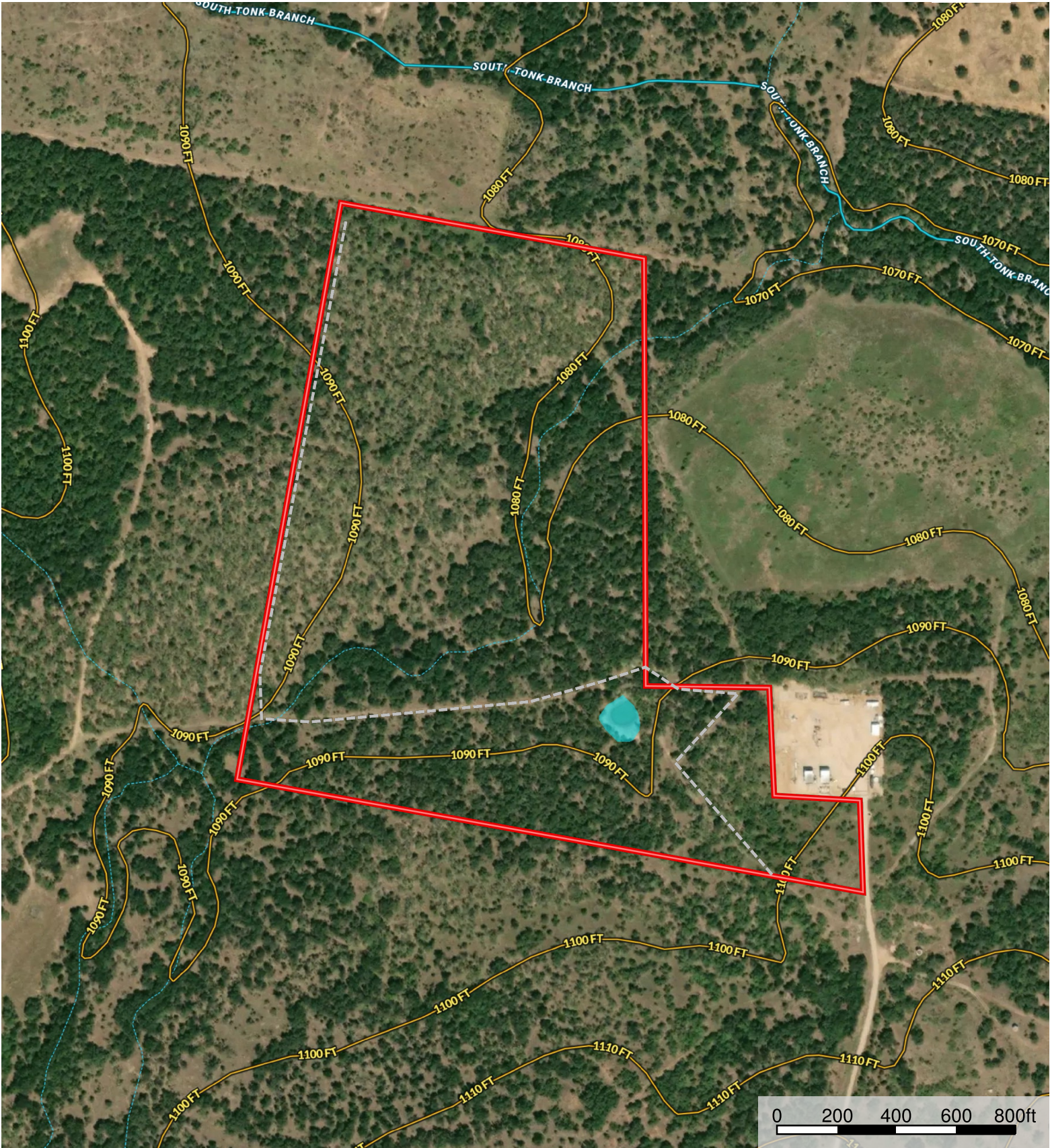
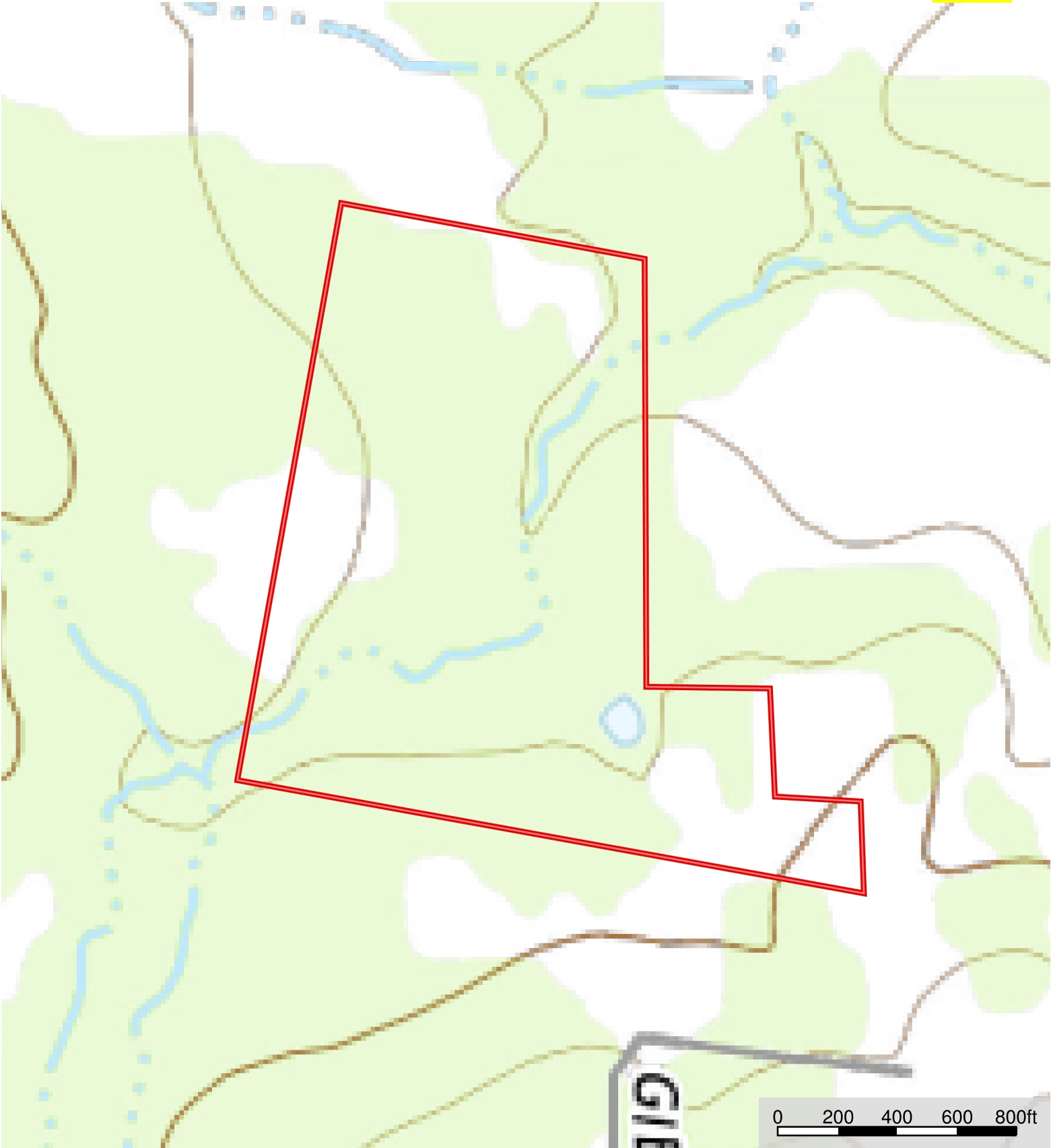


Oak Hollow  
Young County, Texas, 44 AC +/-



Boundary    Road / Trail    Stream, Intermittent    River/Creek    Water Body    Water Wells






 Boundary  Water Wells


**Oak Hollow**  
Young County, Texas, 44 AC +/-



 Boundary

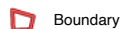
Oak Hollow  
Young County, Texas, 44 AC +/-



 Boundary



Young County, Texas, 44 AC +/-



801 Elm Street, Graham, TX 76450

