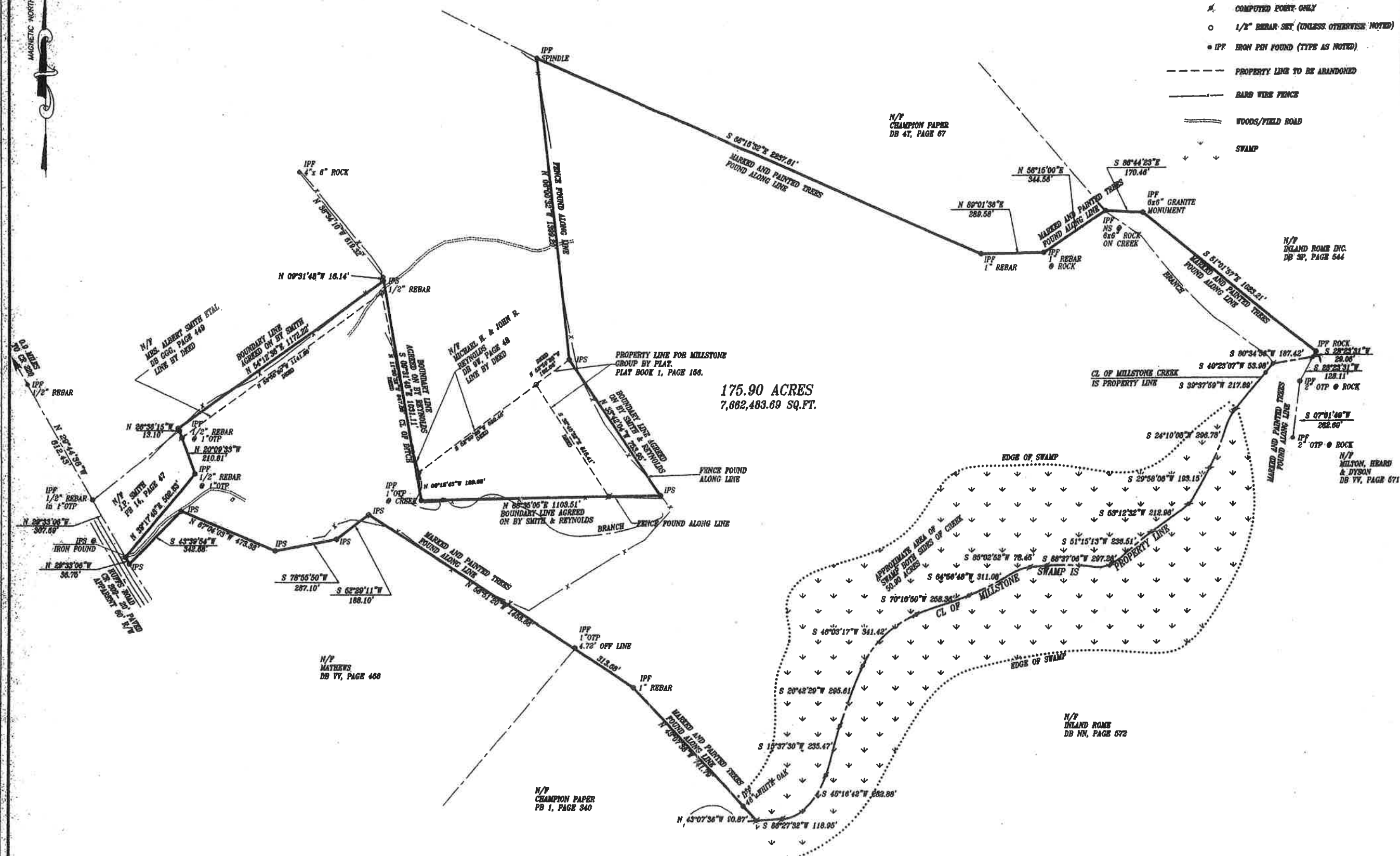


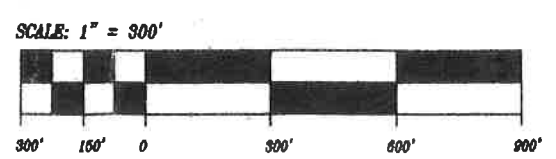


- COMPUTED POINT ONLY
- 1/2" REBAR SET (UNLESS OTHERWISE NOTED)
- IPF IRON PIN FOUND (TYPE AS NOTED)
- PROPERTY LINE TO BE ABANDONED
- BARS WIRE FENCE
- == WOODS/FIELD ROAD
- SWAMP



NOTES:
FIELD INFORMATION FOR THIS SURVEY WAS OBTAINED WITH A 5 SECOND THEODOLITE AND AN ELECTRONIC DISTANCE METER.
THE FIELD DATA UPON WHICH THIS MAP OR PLAT IS BASED HAS A CLOSURE PRECISION OF ONE FOOT IN 8393 FEET AND AN ANGULAR ERROR OF 4 SECONDS PER ANGLE POINT AND WAS ADJUSTED BY LEAST SQUARES.
THIS MAP OR PLAT HAS BEEN CALCULATED FOR CLOSURES AND IS FOUND TO BE ACCURATE WITHIN ONE FOOT IN 4,220,594 FEET.

- REFERENCES:**
1. SURVEY BY W.A. BROACH DATED FEB. 7TH 1917 PB 1, PAGE 19 OF THE OGLETHORPE COUNTY CLERK'S OFFICE.
 2. SURVEY BY W.A. BROACH DATED OCT. 21ST 1920 PB 1, PAGE 156 OF THE OGLETHORPE COUNTY CLERK'S OFFICE.



SURVEY FOR:	
MILLSTONE GROUP	
SURVEY BY:	
BRETT CHANDLER & ASSOCIATES, INC.	
DISTRICT: GMD 237	SURVEYED: 8-16-00
COUNTY: OGLETHORPE	DRAWN: 2-8-01
STATE OF GEORGIA	SCALE: 1"=300' BY: KJA
RUFFS ROAD	205 CHAPMAN PLACE ATHENS, GA 30606 PHONE & FAX 706-549-7395
A034 FB 2&3	