

Texas Distillery And Tasting Room
7905 US HWY 59
Nacogdoches, TX 75964

\$1,400,000
5.500± Acres
Nacogdoches County



**Texas Distillery And Tasting Room
Nacogdoches, TX / Nacogdoches County**

SUMMARY

Address

7905 US HWY 59

City, State Zip

Nacogdoches, TX 75964

County

Nacogdoches County

Type

Business Opportunity, Commercial

Latitude / Longitude

31.492277 / -94.715426

Acreage

5.500

Price

\$1,400,000



MORE INFO ONLINE:

www.RanchRealEstate.com



Texas Distillery And Tasting Room Nacogdoches, TX / Nacogdoches County

PROPERTY DESCRIPTION

Business/Real Estate Opportunity: Front Porch Distillery

Front Porch Distillery and Event Venue A Premier 5.5-Acre Estate

Positioned between Lufkin and Nacogdoches on a prime stretch of highway frontage, Front Porch Distillery offers an exceptional opportunity to own a thriving business with established regional recognition. The 5.5-acre property is home to a fully operational distillery, tasting room, and event space, with ample potential for continued growth.

Since its founding in 2017 as the 277th distillery in the United States, Front Porch Distillery has steadily increased in size and revenue. The distillery complex features 2,200 sq. ft. of tasting rooms and a 4,400 sq. ft. distilled spirits plant, offering a seamless flow between production and customer experience. This turnkey property comes fully equipped with essential distillery assets including stills, fermenters, barrels, and bottling equipment.

The outdoor area is an entertainers dream with a large, inviting seating space and electrical connections for multiple food trucks, perfect for hosting events. Over the past seven years, Front Porch Distillery has become a beloved community venue, hosting over 800 events, ranging from weddings to corporate gatherings. The distillery also includes a 1932 Ford Stake Truck, adding charm and historical appeal to the property.

Tasting Rooms:

The 2,200 sq. ft. of tasting space allows guests to enjoy craft spirits in a comfortable, rustic setting. The tasting rooms offer a relaxed atmosphere with a connection to the outdoor seating area, ideal for events or casual visits.

Distilled Spirits Plant:

The 4,400 sq. ft. plant is a fully functioning facility with all necessary production equipment to continue the successful operation of the business. The facility is equipped with fermenters, stills, and bottling equipment, ready to support ongoing production.

Outdoor Space:

The expansive outdoor area provides space for food trucks and is equipped with electrical hookups, offering a unique venue for large-scale events. The property's location on HWY 59 ensures high visibility and easy access for visitors.

Assets and Equipment:

Included with the sale are major distillery assets: stills, fermenters, barrels, bottles, and furniture, allowing for a seamless transition of ownership. The 1932 Ford Stake Truck offers a vintage touch, contributing to the distillery's unique character.

Front Porch Distillery presents a rare opportunity to acquire a thriving, community-loved business with room to expand. Whether you're looking to grow an established brand, host large events, or simply enjoy the serenity of a distillery estate, this property offers a versatile and comprehensive opportunity.

MORE INFO ONLINE:

www.RanchRealEstate.com



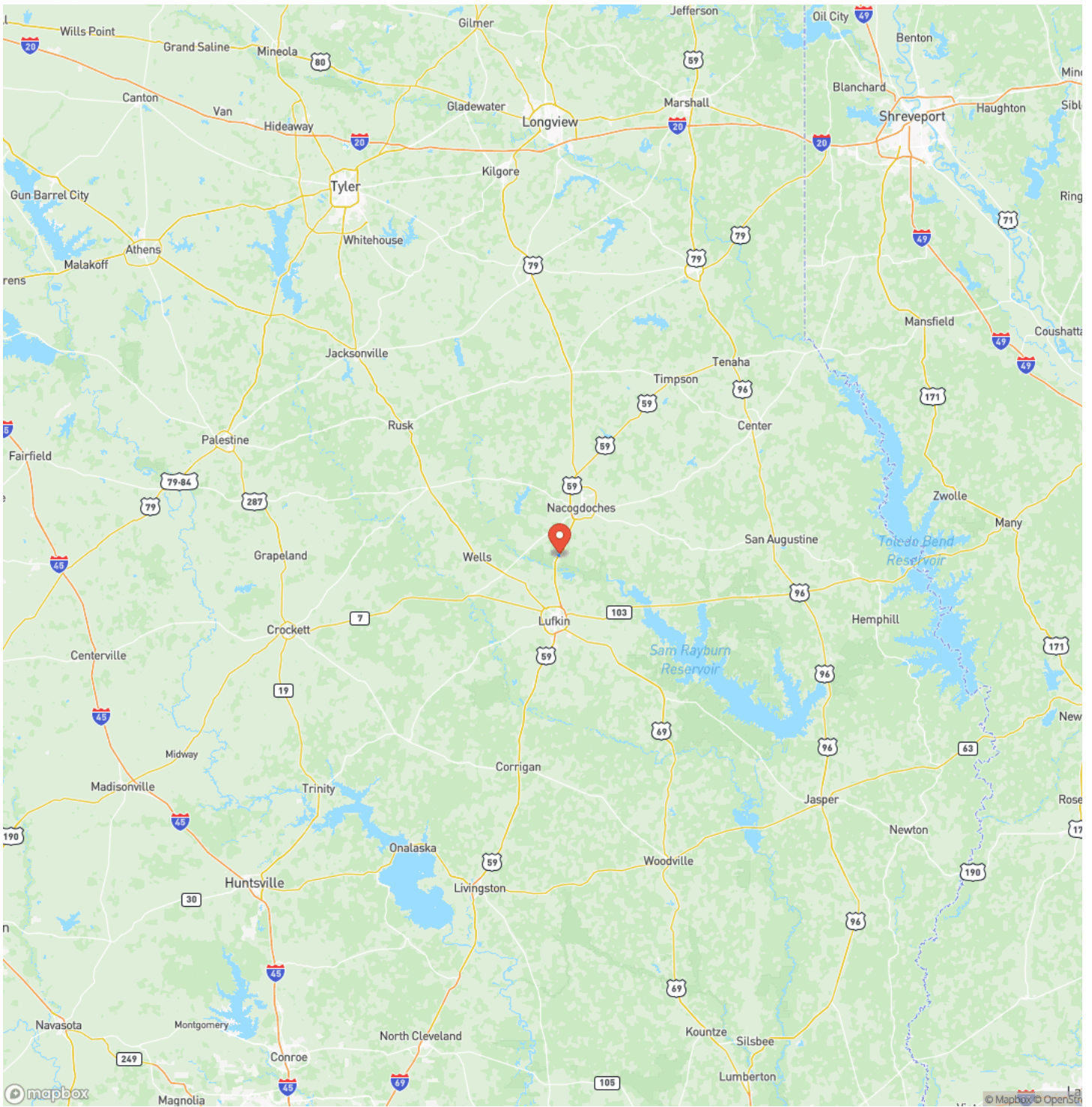
Texas Distillery And Tasting Room
Nacogdoches, TX / Nacogdoches County



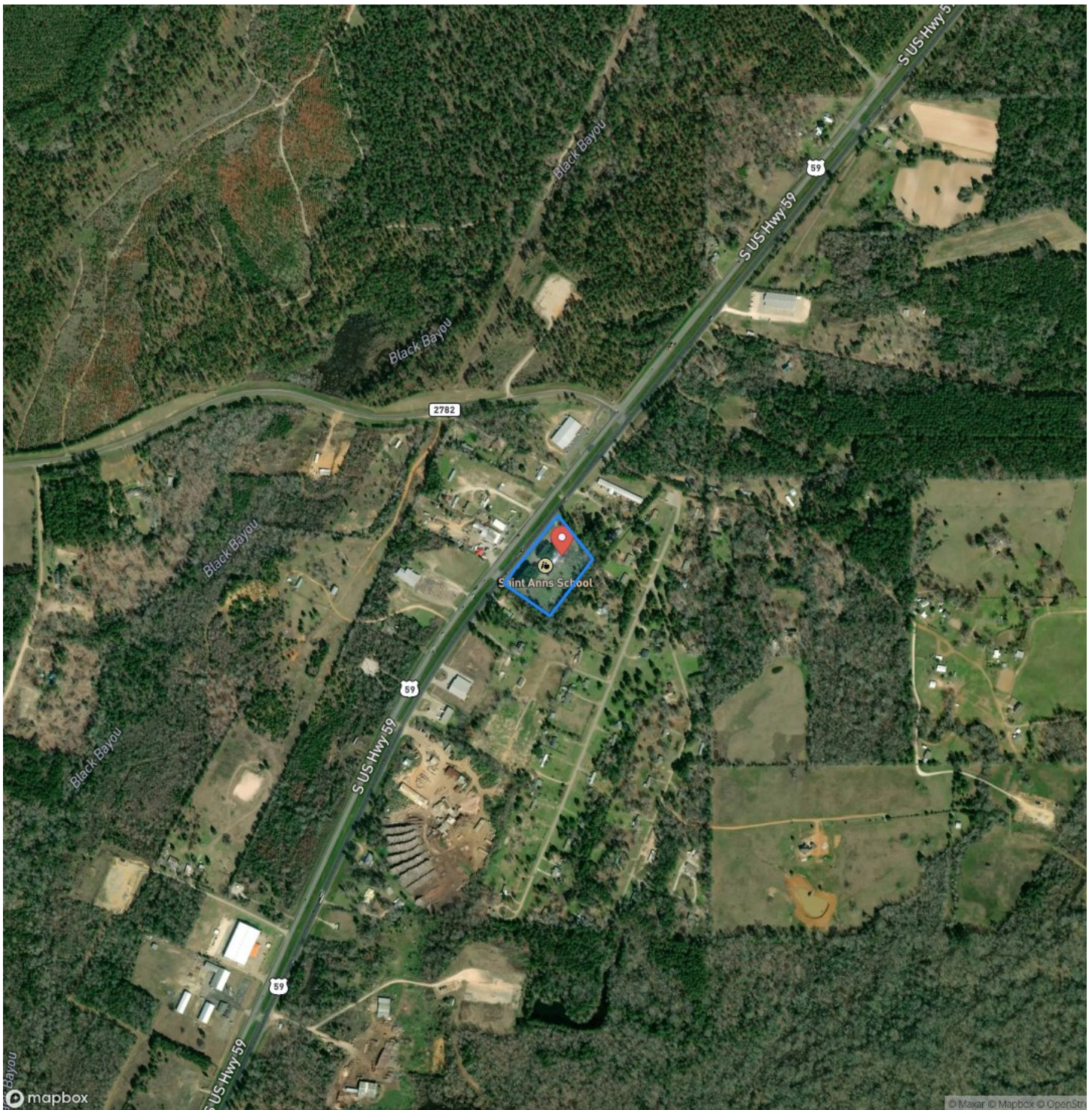
Locator Map



Locator Map



Satellite Map



DISCLAIMERS

Information in this brochure is provided solely for information purposes and does not constitute an offer to sell or advertise real estate outside the states in which broker or agent licensed. The information presented has been obtained from sources deemed to be reliable, but is not guaranteed or warranted by the agent, broker, or the sellers of these properties. This offering is subject to errors, omissions, prior sale, price change, correction or withdrawal from the market without notice. All references to age, square footage, income, expenses, acreage, carrying capacity, and land classification, etc. are approximate. Prospective buyers are chargeable with and expected to conduct their own independent investigation of the information and the property and to rely only on those results. Sellers reserve the right to accept or reject any and all offers without liability to any buyer or cooperating broker.

Maps are provided for illustration purposes only, the accuracy is not warranted. Parcels on interactive maps are not adjusted to match aerial backgrounds. This information is for reference purposes only and is not a legal document. Data maps contain errors. The seller and seller's agent are making known to all potential buyers that there may be variations between the location of the existing fence lines and the legal description of the deeded property. Seller and seller's agent make no warranties with regard to the location of the fence lines in relationship to the deeded property lines, nor does the Seller make any warranties or representations with regard to the specific acreage contained within the fenced property lines. Seller is selling the property in an "as is" condition, which includes the location of the fences as they exist. Boundaries shown on the accompanying maps are approximate, based on county parcel data. The maps are not to scale. The accuracy of the maps is not guaranteed. Prospective buyers are encouraged to verify fence lines, deeded property lines and acreages using a licensed surveyor at their own expense.



Capitol Ranch Real Estate, LLC
12405 Schwartz Road
Brenham, TX 77833
(979) 530-8866
www.RanchRealEstate.com

