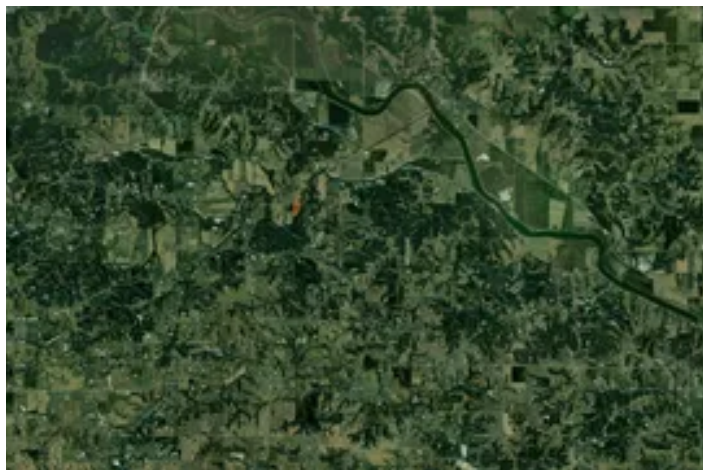


Davis County, Iowa 13 Acres of Land for Sale
11555 Swallow Blvd
Floris, IA 52560

\$91,000
13± Acres
Davis County



Davis County, Iowa 13 Acres of Land for Sale
Floris, IA / Davis County

SUMMARY

Address

11555 Swallow Blvd

City, State Zip

Floris, IA 52560

County

Davis County

Type

Hunting Land, Recreational Land

Latitude / Longitude

40.884423 / -92.282709

Acreage

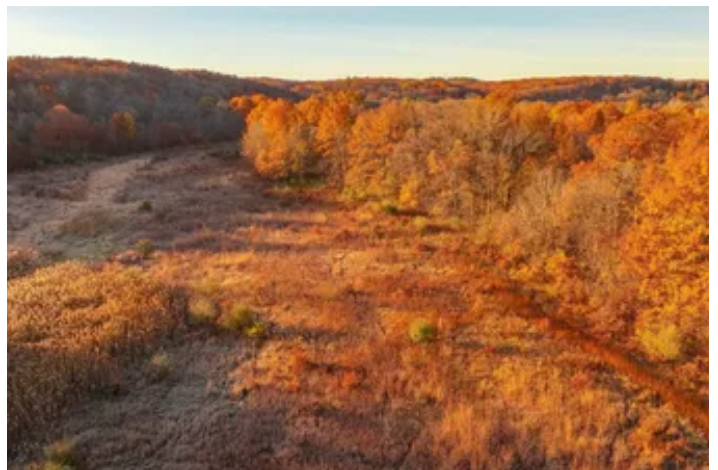
13

Price

\$91,000

Property Website

<https://landguys.com/property/davis-county-iowa-13-acres-of-land-for-sale/davis/iowa/94270/>



Davis County, Iowa 13 Acres of Land for Sale

Floris, IA / Davis County

PROPERTY DESCRIPTION

Perfect small acreage hunting tract in Davis County, Iowa.

This small acreage property offers everything a hunter could want in a compact footprint. With easy access and year-round water from Soap Creek, it provides consistent wildlife movement and a natural travel corridor for deer and turkey. The land is enrolled in CRP, offering both income potential and strong habitat cover. Located in an area known for great deer history, this tract is the perfect setup for hunting or a weekend getaway spot in the outdoors.

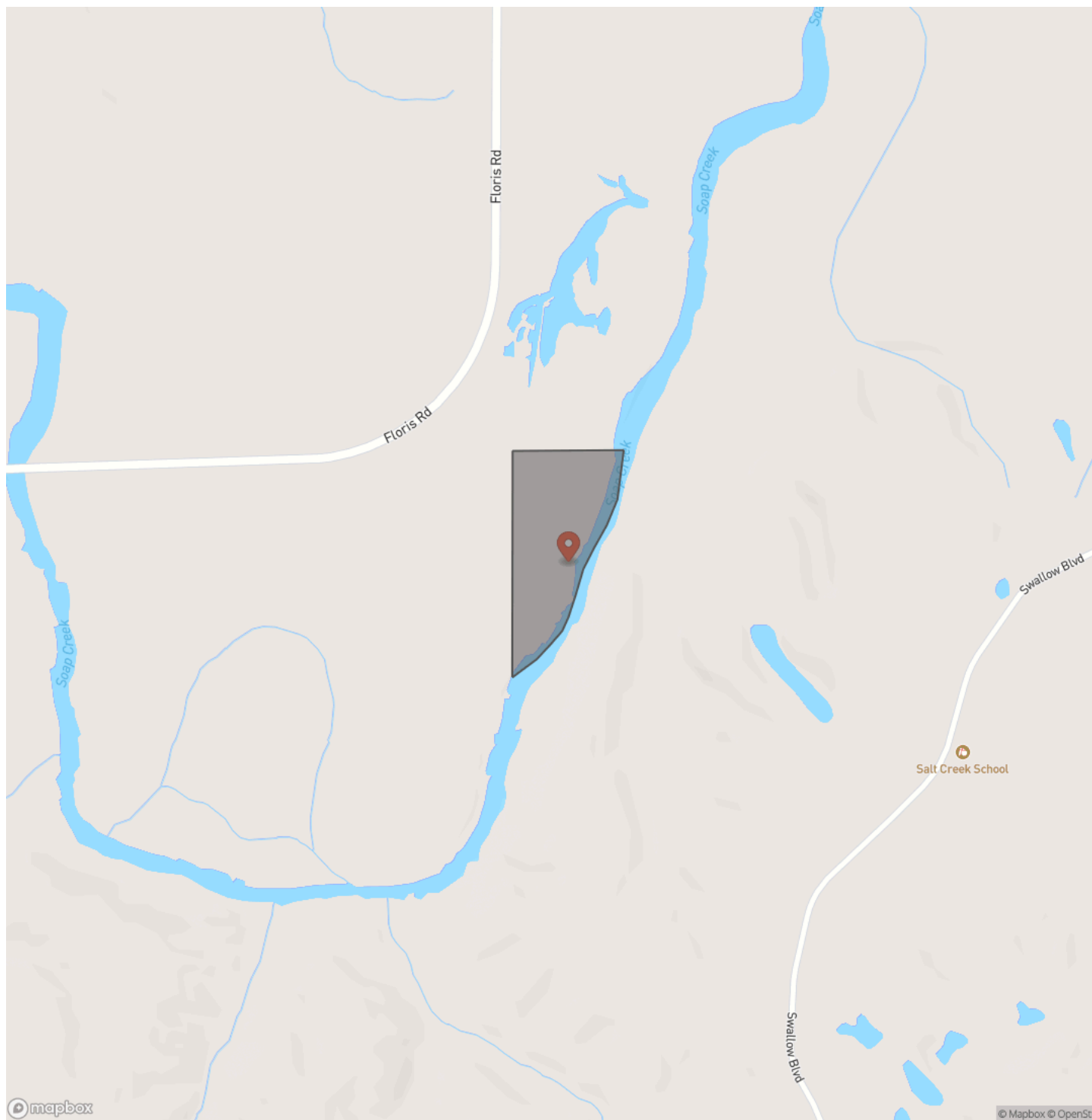
KEY FEATURES

- Perfect small acreage hunting
- Easy access
- In CRP
- Great deer history
- Year-round water from Soap Creek creating a natural wildlife highway
- Additional acreage is available. Contact the listing agent for more information.

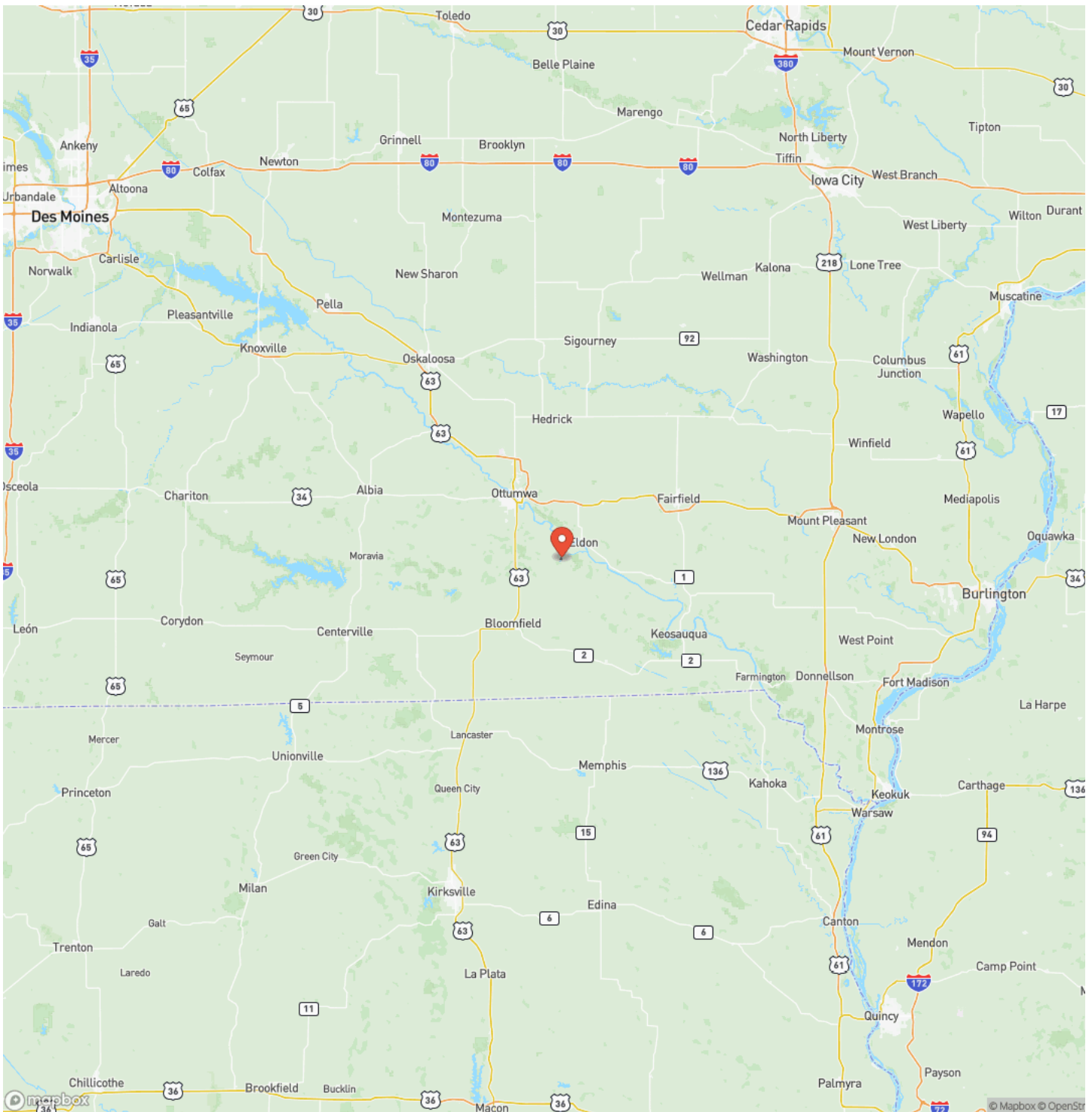
Davis County, Iowa 13 Acres of Land for Sale
Floris, IA / Davis County



Locator Map



Locator Map



MORE INFO ONLINE:

www.landguys.com

Satellite Map



Davis County, Iowa 13 Acres of Land for Sale Florin, IA / Davis County

LISTING REPRESENTATIVE

For more information contact:



Representative

Jesse Stay

Mobile

(217) 779-2793

Email

jesse.stay@landguys.com

Address

City / State / Zip

Keokuk, IA 52632

NOTES

This image shows a single sheet of white paper with horizontal ruling lines. The lines are evenly spaced and run across the width of the page. There are no margins, text, or other markings on the paper.

This image shows a blank sheet of white paper with horizontal ruling lines. The lines are evenly spaced and run across the width of the page. There are no margins, text, or other markings on the paper.

DISCLAIMERS

Information in this brochure is provided solely for information purposes and does not constitute an offer to sell or advertise real estate outside the states in which broker or agent licensed. The information presented has been obtained from sources deemed to be reliable, but is not guaranteed or warranted by the agent, broker, or the sellers of these properties. This offering is subject to errors, omissions, prior sale, price change, correction or withdrawal from the market without notice. All references to age, square footage, income, expenses, acreage, carrying capacity, and land classification, etc. are approximate. Prospective buyers are chargeable with and expected to conduct their own independent investigation of the information and the property and to rely only on those results. Sellers reserve the right to accept or reject any and all offers without liability to any buyer or cooperating broker.

Maps are provided for illustration purposes only, the accuracy is not warranted. Parcels on interactive maps are not adjusted to match aerial backgrounds. This information is for reference purposes only and is not a legal document. Data maps contain errors. The seller and seller's agent are making known to all potential buyers that there may be variations between the location of the existing fence lines and the legal description of the deeded property. Seller and seller's agent make no warranties with regard to the location of the fence lines in relationship to the deeded property lines, nor does the Seller make any warranties or representations with regard to the specific acreage contained within the fenced property lines. Seller is selling the property in an "as is" condition, which includes the location of the fences as they exist. Boundaries shown on the accompanying maps are approximate, based on county parcel data. The maps are not to scale. The accuracy of the maps is not guaranteed. Prospective buyers are encouraged to verify fence lines, deeded property lines and acreages using a licensed surveyor at their own expense.

LandGuys
4331 Conestoga Dr
Springfield, IL 62711
(217) 899-1240
www.landguys.com
