

Jefferson County, Iowa 55 Acres with Home For Sale
2270 256th St
Fairfield, IA 52556

\$1,199,999
55± Acres
Jefferson County



**Jefferson County, Iowa 55 Acres with Home For Sale
Fairfield, IA / Jefferson County**

SUMMARY

Address

2270 256th St

City, State Zip

Fairfield, IA 52556

County

Jefferson County

Type

Farms, Hunting Land, Ranches, Recreational Land

Latitude / Longitude

40.931906 / -91.938776

Dwelling Square Feet

8000

Bedrooms / Bathrooms

3 / 4

Acreage

55

Price

\$1,199,999

Property Website

<https://landguys.com/property/jefferson-county-iowa-55-acres-with-home-for-sale-jefferson-iowa/75041/>



Jefferson County, Iowa 55 Acres with Home For Sale Fairfield, IA / Jefferson County

PROPERTY DESCRIPTION

(SALE PENDING)-If you're looking for a private paradise nestled in the country side of SE Iowa then we have the property for you! Remarkable 5BR/4BA custom home with over 8000 sq.ft of craftsmanship throughout the entire property. There was no expense spared when building this one of a kind home just south of Fairfield, Iowa. The land offers a perfect combination of dense timber, high quality farm land, a fully stocked pond and recreational opportunity. Astonishing back yard with professional landscaping featuring a rock waterfall, private seating areas and an ultimate oasis to entrain guest or just take in mother nature. Inside you are greeted with a large foyer with beautiful stained glass. Kitchen offers high end appliances, custom cabinetry, granite countertops, hands free sinks and much more. Unforgettable finishes in this home include hammered copper inlays, Vantage lighting/speaker system, stained glass, maple hardwood floors and custom murals. Basement features a movie theater area with sound proofing, additional kitchen, large bonus room and additional non conforming bedrooms. There are to many detail to list on this extraordinary property schedule your private showing today to learn more. Additional land available for purchase.

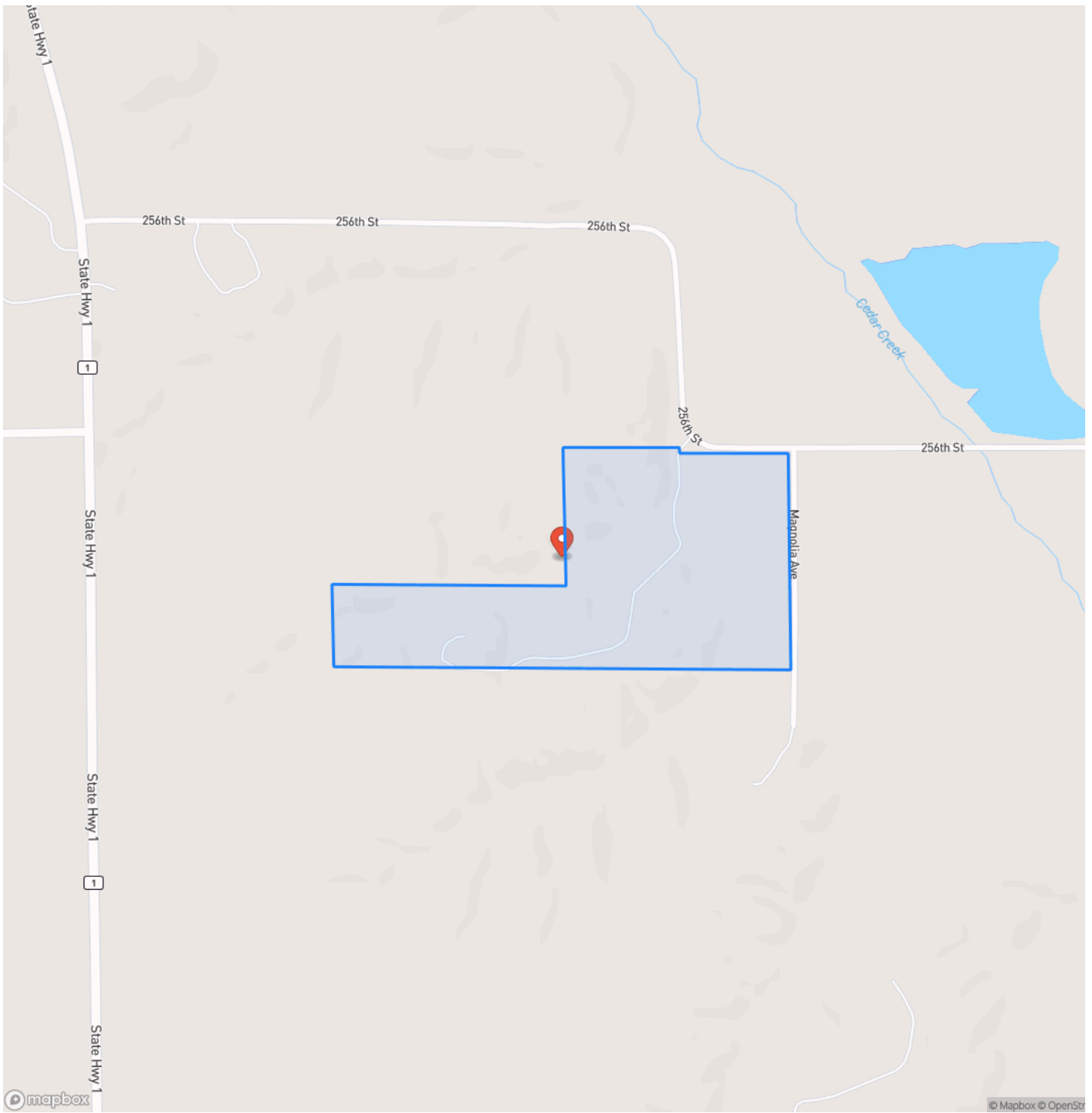
KEY FEATURES

- 3BD, 4BA, with 2 other nonconforming bedrooms.
- Additional land available for purchase
- Heated 2 car attached garage & driveway
- Sophisticated lighting system
- Solarium with heated floors, large windows, and custom stonework
- Brillizan Ipe wood siding and decking for durability
- Large pond shared with the neighboring property
- Screened porch with a fan
- Excellent hunting area
- Fairfield School District

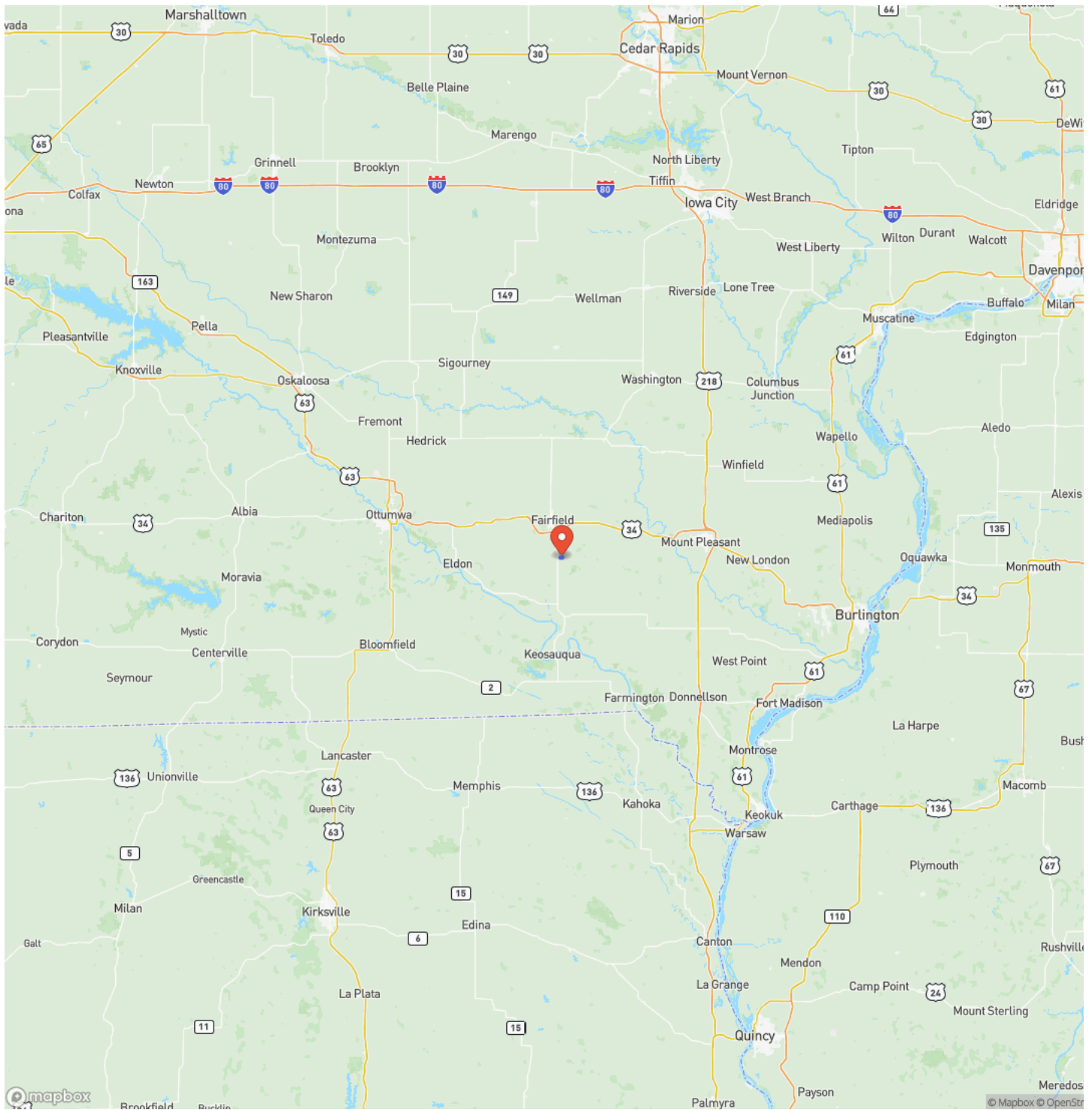
**Jefferson County, Iowa 55 Acres with Home For Sale
Fairfield, IA / Jefferson County**



Locator Map



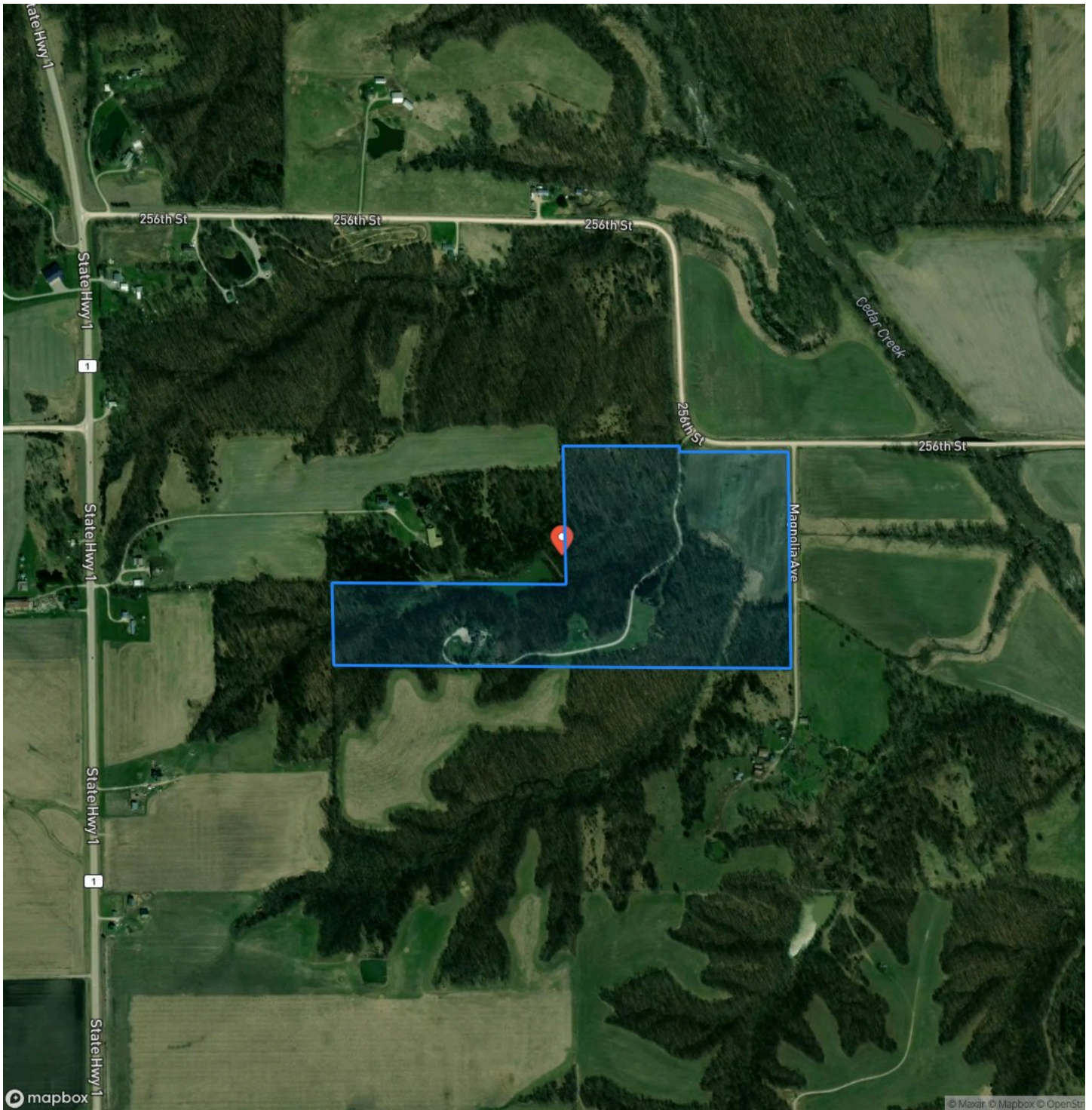
Locator Map



MORE INFO ONLINE:

www.landguys.com

Satellite Map



DISCLAIMERS

Information in this brochure is provided solely for information purposes and does not constitute an offer to sell or advertise real estate outside the states in which broker or agent licensed. The information presented has been obtained from sources deemed to be reliable, but is not guaranteed or warranted by the agent, broker, or the sellers of these properties. This offering is subject to errors, omissions, prior sale, price change, correction or withdrawal from the market without notice. All references to age, square footage, income, expenses, acreage, carrying capacity, and land classification, etc. are approximate. Prospective buyers are chargeable with and expected to conduct their own independent investigation of the information and the property and to rely only on those results. Sellers reserve the right to accept or reject any and all offers without liability to any buyer or cooperating broker.

Maps are provided for illustration purposes only, the accuracy is not warranted. Parcels on interactive maps are not adjusted to match aerial backgrounds. This information is for reference purposes only and is not a legal document. Data maps contain errors. The seller and seller's agent are making known to all potential buyers that there may be variations between the location of the existing fence lines and the legal description of the deeded property. Seller and seller's agent make no warranties with regard to the location of the fence lines in relationship to the deeded property lines, nor does the Seller make any warranties or representations with regard to the specific acreage contained within the fenced property lines. Seller is selling the property in an "as is" condition, which includes the location of the fences as they exist. Boundaries shown on the accompanying maps are approximate, based on county parcel data. The maps are not to scale. The accuracy of the maps is not guaranteed. Prospective buyers are encouraged to verify fence lines, deeded property lines and acreages using a licensed surveyor at their own expense.

LandGuys
4331 Conestoga Dr
Springfield, IL 62711
(217) 899-1240
www.landguys.com
