

Beautiful Estate on 4.45 acres
29495 Knight Rd
Hermiston, OR 97838

\$799,000
4.450± Acres
Umatilla County



Beautiful Estate on 4.45 acres
Hermiston, OR / Umatilla County

SUMMARY

Address

29495 Knight Rd

City, State Zip

Hermiston, OR 97838

County

Umatilla County

Type

Residential Property

Latitude / Longitude

45.84331 / -119.346601

Taxes (Annually)

8968

Dwelling Square Feet

4374

Bedrooms / Bathrooms

3 / 2

Acreage

4.450

Price

\$799,000

Property Website

<https://www.landleader.com/property/beautiful-estate-on-4-45-acres-umatilla-oregon/59844>



Beautiful Estate on 4.45 acres
Hermiston, OR / Umatilla County

PROPERTY DESCRIPTION

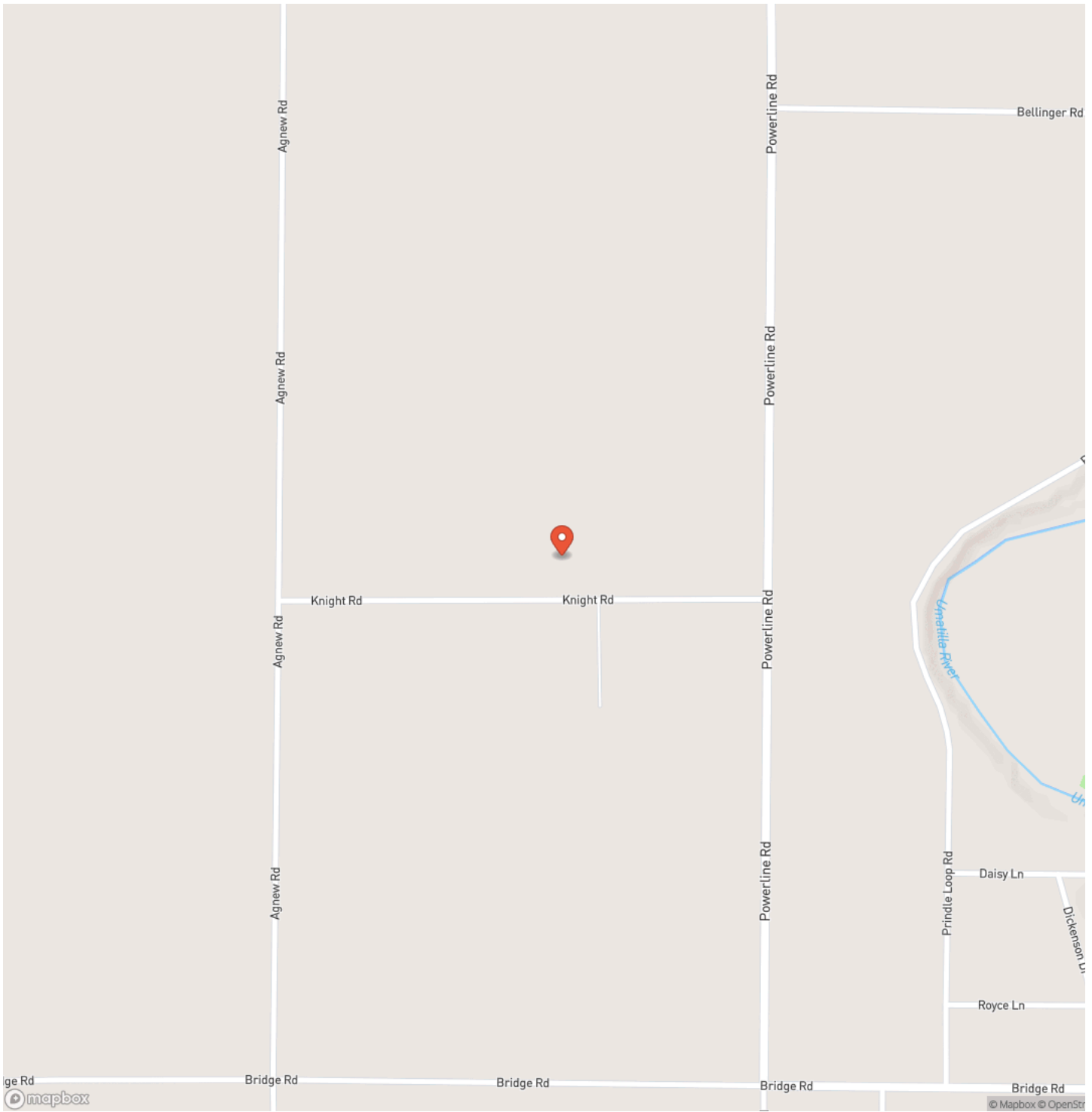
Discover this expansive estate sitting on 4.45 acres with full water rights, featuring a spacious 4374-square-foot home. The adjacent property is also for sale. Step through the landscaped entry to a large foyer leading to the main level, where you'll find two generous living rooms, two dining areas, an updated kitchen, laundry facilities, a main bathroom, two guest bedrooms, and a luxurious master bedroom with bath. The lower level is designed to accommodate various activities, including a movie theatre, workout room, and office space. Additional rooms provide ample storage, along with specialized areas for canning or reloading. A bar setup, full bathroom, spare room, and fourth bedroom with garage access complete this versatile space. Outdoors, enjoy the in-ground concrete pool, fully fenced for safety, perfect for relaxation and recreation. The property also includes a barn with four stalls, a loft, hay storage, and water access, with a sliding door leading to the pasture equipped with solid set sprinklers. Garden enthusiasts will appreciate the planter boxes to the west of the house, ideal for cultivating a large garden, alongside a greenhouse that awaits minor repairs. For the hobbyist or entrepreneur, a (approx) 2400-square-foot shop awaits, featuring three 12-foot roll-up doors, heated space, a loft area, and a full wall of cabinets. Two dedicated office rooms, a full bath, and laundry connections add to its appeal. Adjacent to the shop, you'll find ample parking space for RVs, complete with sewer hookup and both 30 and 50 amp power connections. This remarkable property offers endless possibilities for living, entertaining, and pursuing hobbies in a picturesque setting. Seize this rare opportunity to combine this property with the adjacent acreage and home for sale to build your dream retreat.



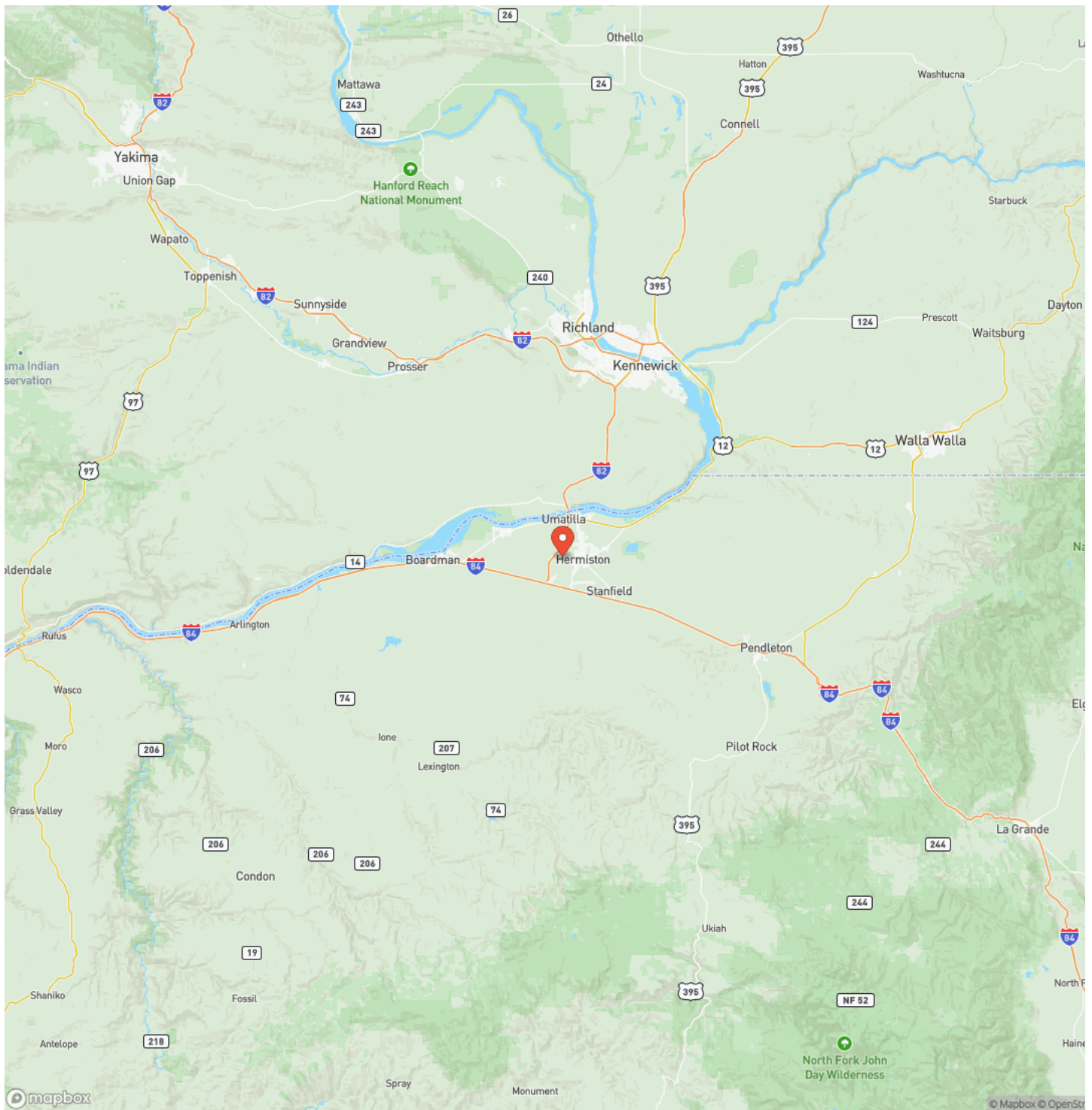
Beautiful Estate on 4.45 acres
Hermiston, OR / Umatilla County



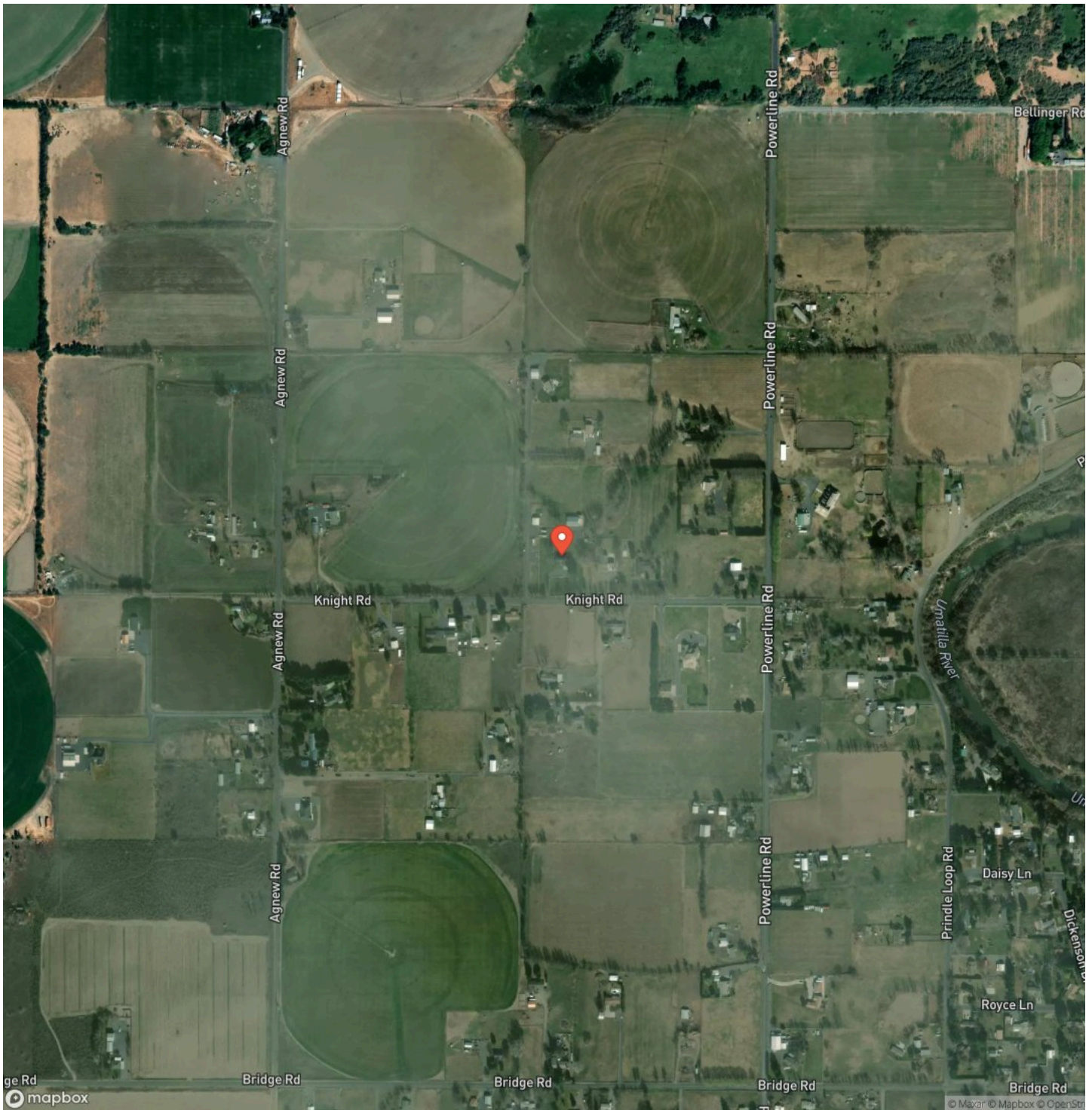
Locator Map



Locator Map



Satellite Map



**Beautiful Estate on 4.45 acres
Hermiston, OR / Umatilla County**

LISTING REPRESENTATIVE
For more information contact:

Representative
David Smith

Mobile
(509) 540-4708

Office
(509) 540-4708

Email
david@landandwildlife.com

Address
City / State / Zip
, OR 97701



NOTES

DISCLAIMERS

Information in this brochure is provided solely for information purposes and does not constitute an offer to sell or advertise real estate outside the states in which broker or agent licensed. The information presented has been obtained from sources deemed to be reliable, but is not guaranteed or warranted by the agent, broker, or the sellers of these properties. This offering is subject to errors, omissions, prior sale, price change, correction or withdrawal from the market without notice. All references to age, square footage, income, expenses, acreage, carrying capacity, and land classification, etc. are approximate. Prospective buyers are chargeable with and expected to conduct their own independent investigation of the information and the property and to rely only on those results. Sellers reserve the right to accept or reject any and all offers without liability to any buyer or cooperating broker.

Maps are provided for illustration purposes only, the accuracy is not warranted. Parcels on interactive maps are not adjusted to match aerial backgrounds. This information is for reference purposes only and is not a legal document. Data maps contain errors. The seller and seller's agent are making known to all potential buyers that there may be variations between the location of the existing fence lines and the legal description of the deeded property. Seller and seller's agent make no warranties with regard to the location of the fence lines in relationship to the deeded property lines, nor does the Seller make any warranties or representations with regard to the specific acreage contained within the fenced property lines. Seller is selling the property in an "as is" condition, which includes the location of the fences as they exist. Boundaries shown on the accompanying maps are approximate, based on county parcel data. The maps are not to scale. The accuracy of the maps is not guaranteed. Prospective buyers are encouraged to verify fence lines, deeded property lines and acreages using a licensed surveyor at their own expense.



Land and Wildlife LLC
Serving Oregon, Washington, and Idaho
Medford, OR 97504
(866) 559-3478
<https://www.landleader.com/brokerage/land-and-wildlife-llc>

