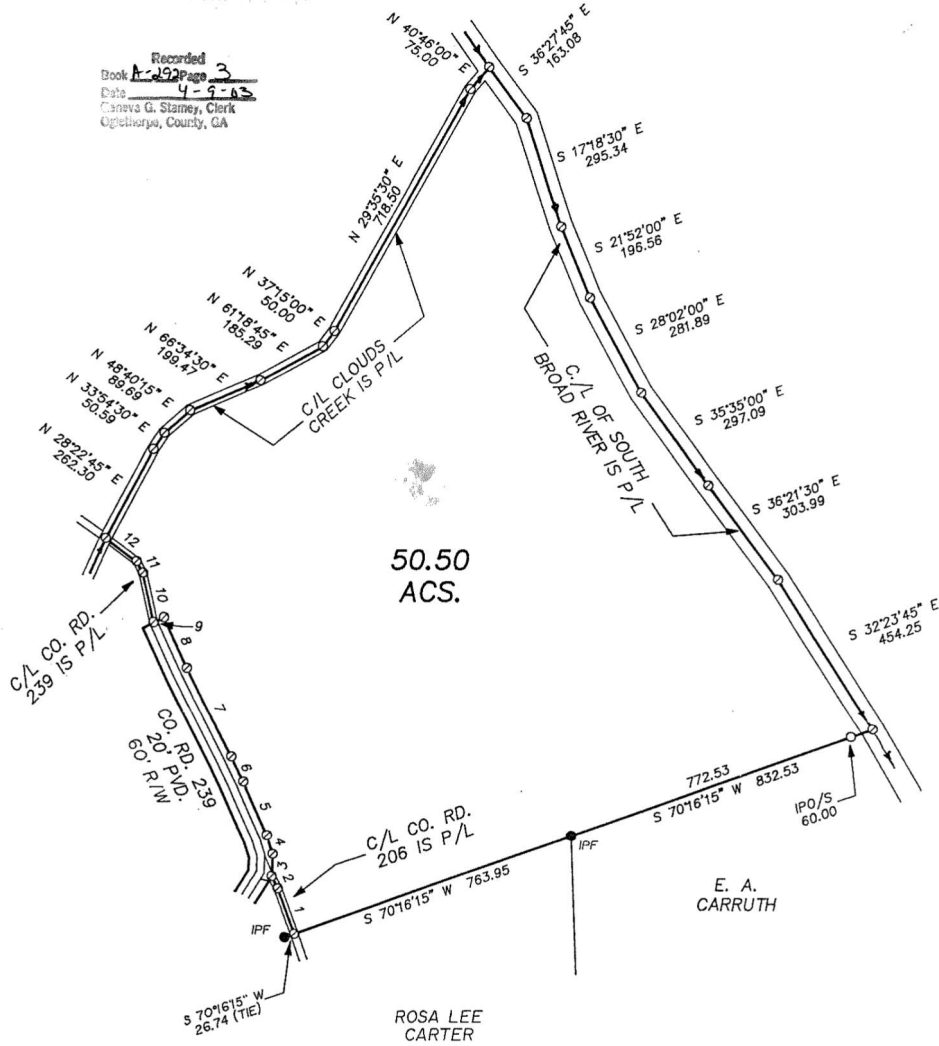


Exhibit B

PIEDMONT PRINTMAKERS 1M 4-82 MC 3490R

FILED IN SYSTEM
2003 APR -9 AM 10:57
Stacy Arnold
CLERK, SURVEYOR GENERAL
COUNTY OF OGLETHORPE

Recorded
Book A-192 Page 3
Date 4-9-89
Caneva G. Stamey, Clerk
Oglethorpe County, GA



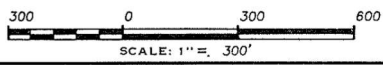
50.50
ACS.

LINE	BEARING	DISTANCE
1	N 19°26'45" W	125.29
2	N 26°30'00" W	35.31
3	N 02°41'00" E	59.26
4	N 16°39'00" W	51.77
5	N 23°08'15" W	153.11
6	N 24°49'30" W	72.62
7	N 26°24'15" W	258.74
8	N 24°25'45" W	142.47
9	S 65°34'15" W	30.00
10	N 12°12'30" W	128.60
11	N 27°25'30" W	33.99
12	N 52°21'30" W	100.64

APPROVED

James M. Paul
OGLETHORPE COUNTY LAND
USE & DEVELOPMENT INSP.

- IPF - IRON PIN FOUND
- IPS - IRON PIN SET
- ⊗ - TRAVERSE POINT



I HEREBY CERTIFY THAT THIS PLAT IS A TRUE AND CORRECT REPRESENTATION OF THE LAND PLATTED AND HAS BEEN PREPARED IN CONFORMITY WITH THE MINIMUM STANDARDS AND REQUIREMENTS OF LAW.

	SURVEY FOR: MRS. O. L. TOLBERT			THEODOLITE: WILD T16	LOCATION MAP: 	
	GMD: 236	COUNTY: OGLETHORPE	STATE: GEORGIA	DATE: 07-12-89		DISTANCE EQUIP.: K&E EDM
	DRAWN BY: EVANS	SURVEYED BY: JAMES M. PAUL				CLOSURE: 1'/27,473'
	DRAWING NO.: T-59-B	ENGINEERING & SURVEYING CRAWFORD, GEORGIA 30630 PHONE: (404) 783-5125				ANGLE CLOSURE: 2" ANGLE
FIELD BOOK: 277/44-48				ADJUSTMENT: NONE		
				ADJ. CLOSURE: 1'/27,473'		