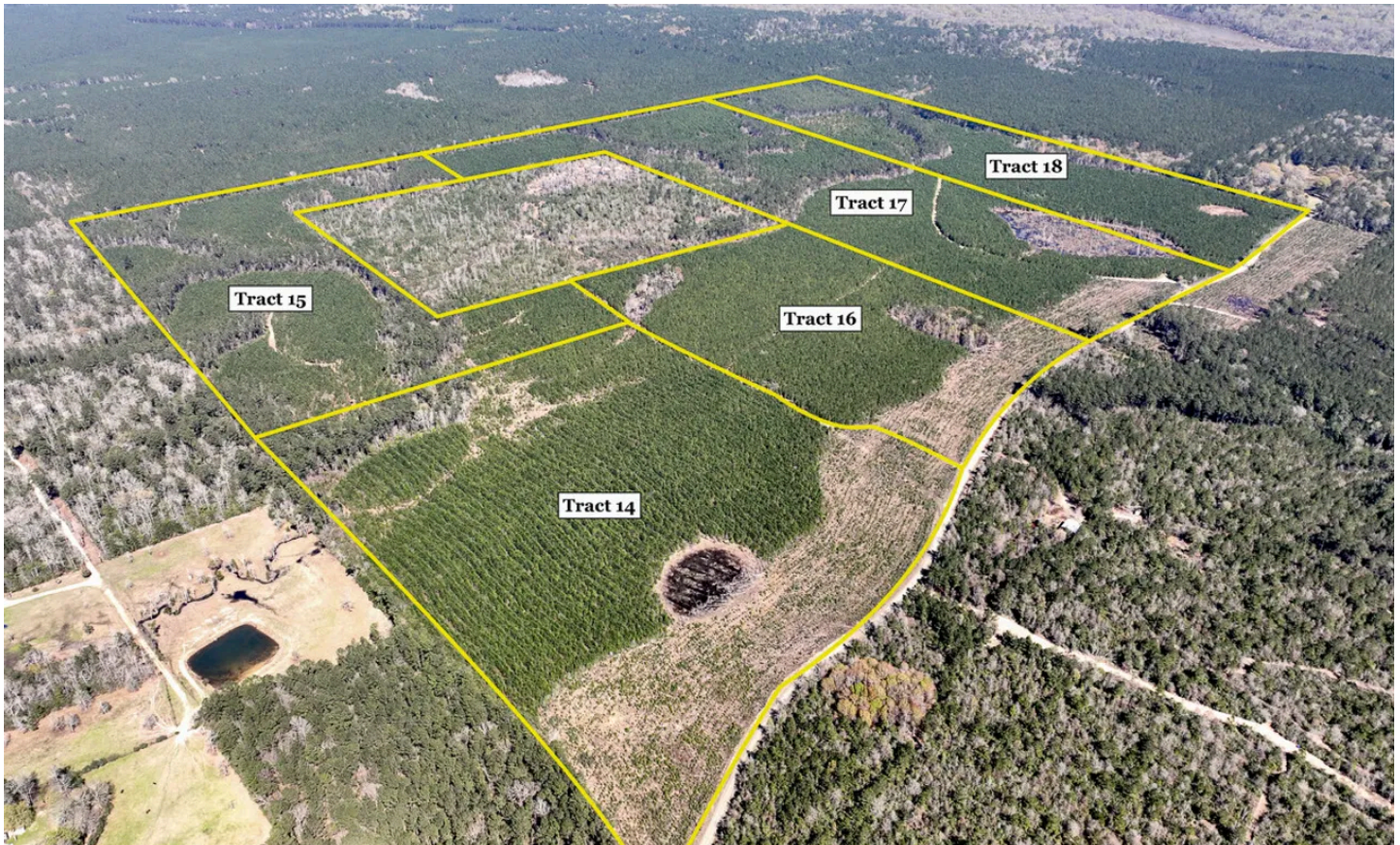


49 acres | T-14 | Spurger Pines North  
County Road 4415  
Spurger, TX 77660

**\$367,500**  
49± Acres  
Tyler County



**MORE INFO ONLINE:**  
[www.homelandprop.com](http://www.homelandprop.com)



**49 acres | T-14 | Spurger Pines North  
Spurger, TX / Tyler County**

---

**SUMMARY**

**Address**

County Road 4415

**City, State Zip**

Spurger, TX 77660

**County**

Tyler County

**Type**

Undeveloped Land

**Latitude / Longitude**

30.7259064835 / -94.1627247249

**Acreage**

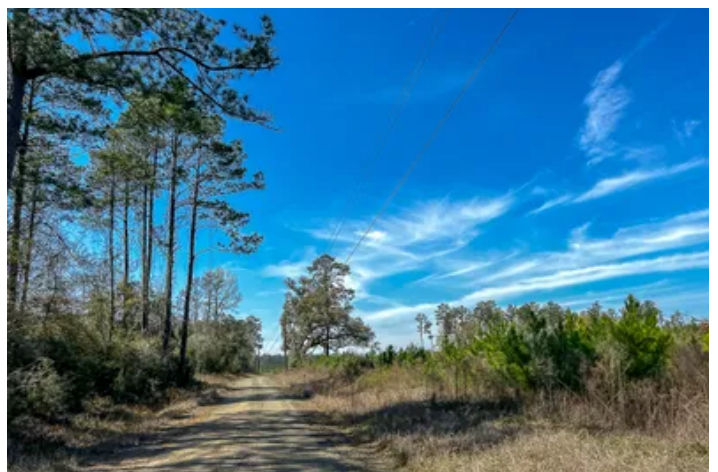
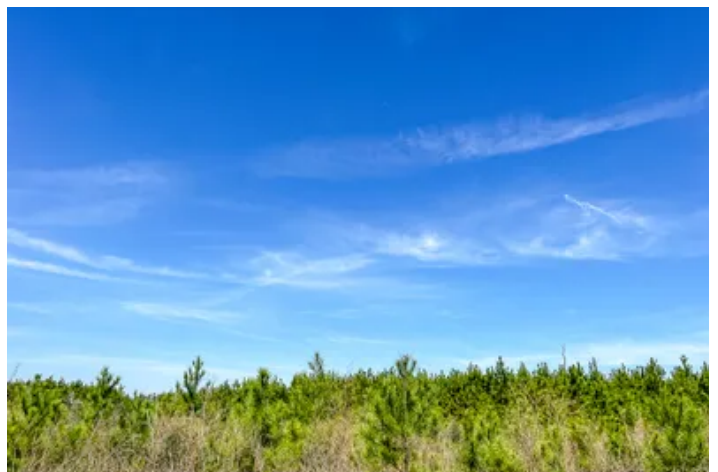
49

**Price**

\$367,500

**Property Website**

<https://homelandprop.com/property/49-acres-t-14-spurger-pines-north-tyler-texas/73611/>



**MORE INFO ONLINE:**  
[www.homelandprop.com](http://www.homelandprop.com)

49 acres | T-14 | Spurger Pines North  
Spurger, TX / Tyler County

---

### **PROPERTY DESCRIPTION**

---

**1<sup>st</sup> time open market offering!** Beautiful wooded tracts on low traffic (dead end) road. Easy to access. Electricity is available along CR 4415. Take advantage of recreation areas like [Beech Creek](#) and [Martin Dies, Jr. State Park](#) located in the [Big Thicket National Preserve](#) and explore waterways like the [Neches River](#). These areas offer endless trails, fishing, and discovery with the plentiful native wildlife. Quiet, low traffic community.

---

**Utilities:** Electricity available

**Utility Providers:** Sam Houston Electric Cooperative

**School District:** Spurger ISD



**MORE INFO ONLINE:**  
[www.homelandprop.com](http://www.homelandprop.com)

49 acres | T-14 | Spurger Pines North  
Spurger, TX / Tyler County

---

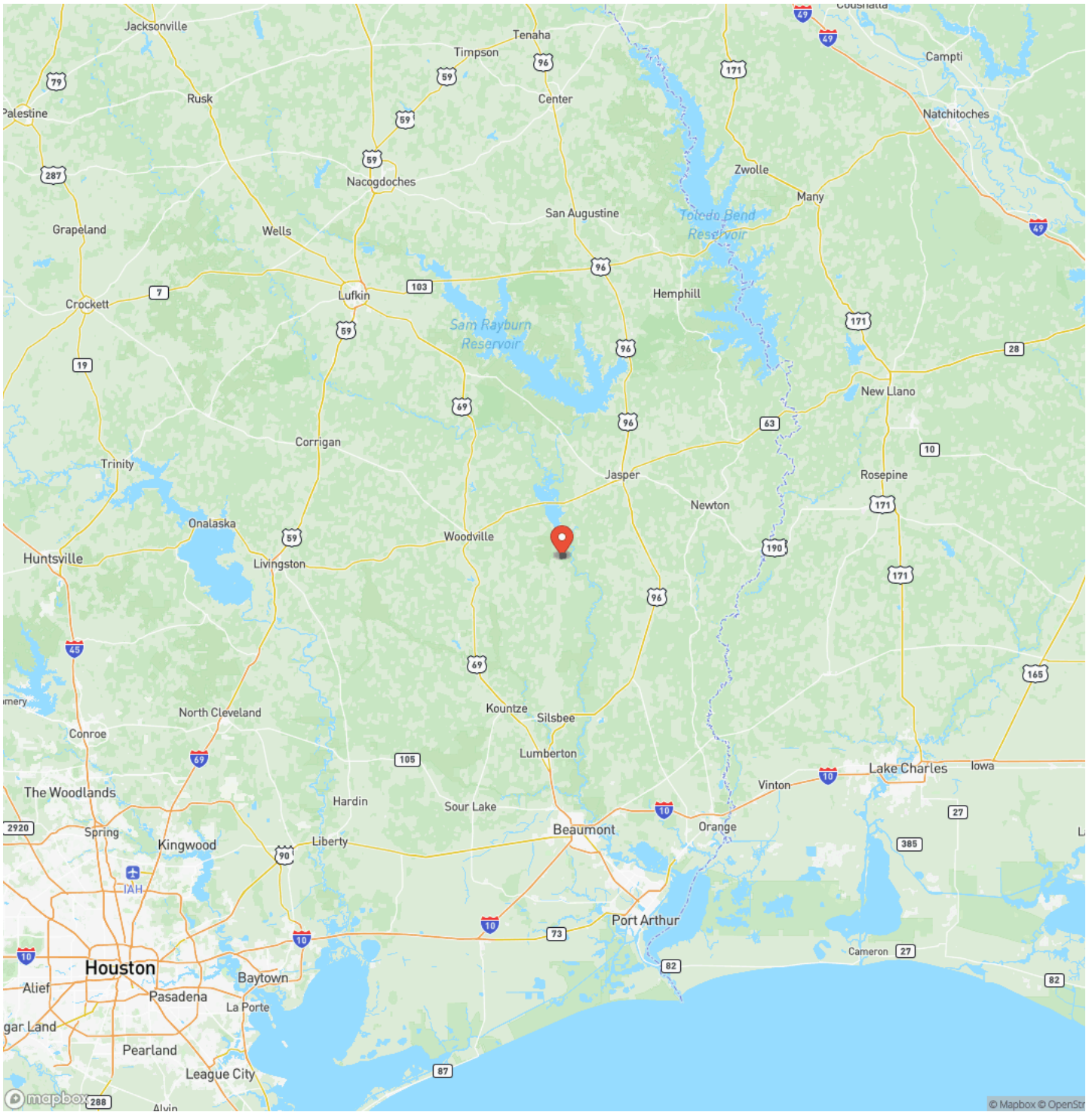


## Locator Map





## Locator Map





## Satellite Map









## **DISCLAIMERS**

Information in this brochure is provided solely for information purposes and does not constitute an offer to sell or advertise real estate outside the states in which broker or agent licensed. The information presented has been obtained from sources deemed to be reliable, but is not guaranteed or warranted by the agent, broker, or the sellers of these properties. This offering is subject to errors, omissions, prior sale, price change, correction or withdrawal from the market without notice. All references to age, square footage, income, expenses, acreage, carrying capacity, and land classification, etc. are approximate. Prospective buyers are chargeable with and expected to conduct their own independent investigation of the information and the property and to rely only on those results. Sellers reserve the right to accept or reject any and all offers without liability to any buyer or cooperating broker.

Maps are provided for illustration purposes only, the accuracy is not warranted. Parcels on interactive maps are not adjusted to match aerial backgrounds. This information is for reference purposes only and is not a legal document. Data maps contain errors. The seller and seller's agent are making known to all potential buyers that there may be variations between the location of the existing fence lines and the legal description of the deeded property. Seller and seller's agent make no warranties with regard to the location of the fence lines in relationship to the deeded property lines, nor does the Seller make any warranties or representations with regard to the specific acreage contained within the fenced property lines. Seller is selling the property in an "as is" condition, which includes the location of the fences as they exist. Boundaries shown on the accompanying maps are approximate, based on county parcel data. The maps are not to scale. The accuracy of the maps is not guaranteed. Prospective buyers are encouraged to verify fence lines, deeded property lines and acreages using a licensed surveyor at their own expense.



**MORE INFO ONLINE:**

[www.homelandprop.com](http://www.homelandprop.com)



---

**HomeLand Properties, Inc.**  
1600 Normal Park Dr.  
Huntsville, TX 77340  
(936) 295-2500  
[www.homelandprop.com](http://www.homelandprop.com)

---



**MORE INFO ONLINE:**  
[www.homelandprop.com](http://www.homelandprop.com)